 HYUNDAI Technical Service Bulletin	GROUP CAMPAIGN	NUMBER 18-01-002-1
	DATE MARCH, 2018	MODEL(S) SONATA HYBRID (LF HEV) SONATA PLUG-IN HYBRID (LF PHEV)
SUBJECT: 2017 SONATA HYBRID/PLUG-IN HYBRID NAVIGATION SOFTWARE UPDATE (SERVICE CAMPAIGN T2S)		

This bulletin supersedes TSB 18-01-002 to include the Caution and Warning text box on the front page.

★ IMPORTANT

***** Dealer Stock and Retail Vehicles *****

Dealers must perform this Service Campaign on all affected vehicles prior to customer retail delivery and whenever an affected vehicle is in the shop for any maintenance or repair.

When a vehicle arrives at the Service Department, access Hyundai Motor America's "Warranty Vehicle Information" screen via WEBDCS to identify open Campaigns.

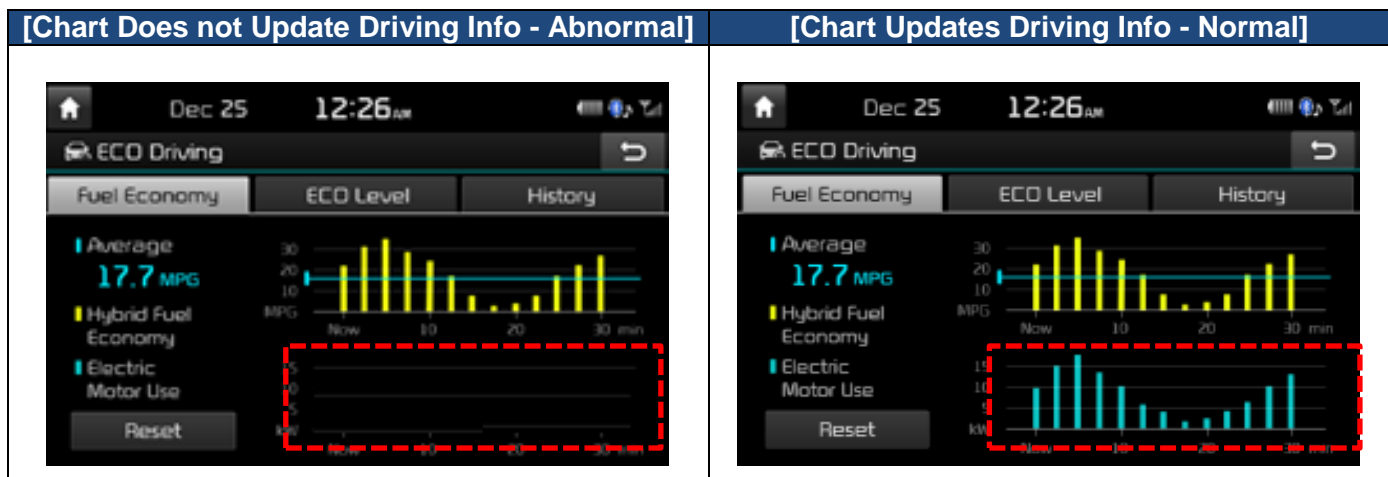
⚠ CAUTION

Before performing the update, please use extra caution to confirm that the correct update SD Card Type is used. Updating with the incorrect SD Card Type will render the head unit inoperable.



⚠ WARNING

Dealers or Service Technicians that incorrectly perform this update will need to buy a new Map Card for the unit at the Dealer's expense. Associated warranty claims that are submitted for a head unit replacement due to incorrectly performing the update are subject to chargeback.

Description: This bulletin describes the procedure for updating the Navigation System Software for 2017 Model Year Sonata Hybrid and Plug-In Hybrid vehicles. This update allows for the driving information to be updated in the Electric Motor Use chart. The software update will take approximately 35 minutes to complete.



Circulate To: General Manager, Service Manager, Parts Manager, Warranty Manager, Service Advisors, Technicians, Body Shop Manager, Fleet Repair

Applicable Vehicles:	Navigation equipped vehicles:		
S/W Update SD Card (Type A)		96560-E600 0 QQH	1
S/W Update SD Card (Type B)		96560-E600 1 QQH	1

NOTE: Two (2) sets of update SD cards have been sent to each dealership. Additional update media can be purchased through the PDC using the applicable Part Number.

Warranty Information:

Model	Op. Code	Operation	Op. Time	Causal Part Number	Nature	Cause
Sonata Hybrid (LF HEV) & Sonata Plug-in Hybrid (LF PHEV)	70C087R0	AVN S/W UPDATE	0.3 M/H	96560- E67014X	M45	ZZ3

NOTE: Submit Claim on Campaign Claim Entry Screen



Confirm correct Update SD Card Type is used. Updating with the incorrect SD Card Type will render the head unit inoperable.

Service Procedure:

CAUTION

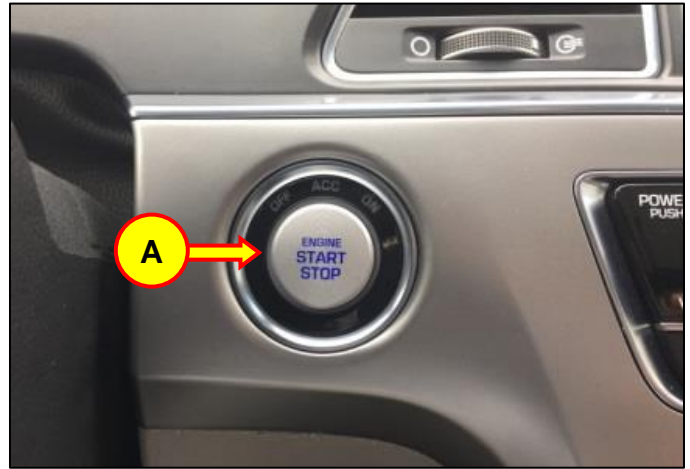
Do not remove the S/W UPDATE SD card or turn off the ignition during the update. Otherwise, the update will not be completed properly.

1. Software version check:

Press the **START STOP BUTTON (A)** to turn ACC "ON".

OR

Depress the brake pedal and press the **START STOP BUTTON (A)** to start the vehicle.



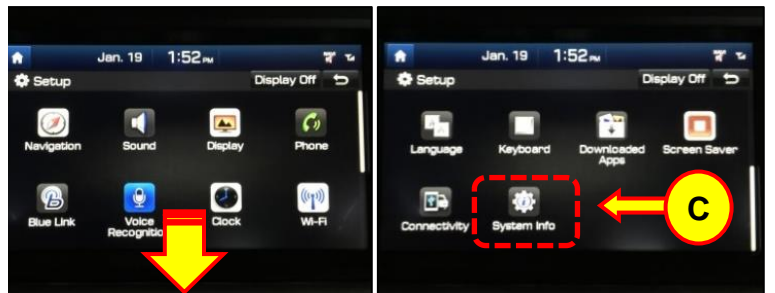
NOTICE

Park vehicle in a well ventilated area during the update process.

2. Press the 'SETUP' button (B) to enter the Setup menu.

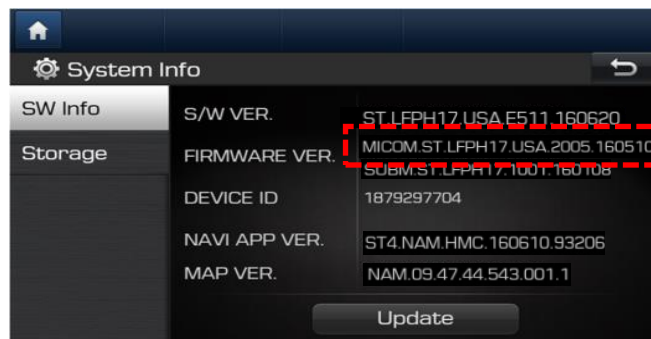


3. Scroll down and press the 'System Info' icon (C).



4. In the SW Info screen, check the **FIRMWARE Version:**

- Proceed with update if the OLD/Original FIRMWARE Version is the same or earlier than shown below:



Model	OLD/Original Firmware Version	NEW Firmware Version
LF HEV	MICOM.ST.LFE17.USA. 2005.160510	MICOM.ST.LFE17.USA.B005.170821
LF PHEV	MICOM.ST.LFPH17.USA. 2005.160510	MICOM.ST.LFPH17.USA.B005.170821

- If the version is later than the OLD/Original FIRMWARE version above, then no update is needed.

5. **Software update process: Use the appropriate S/W Update SD Card depending on the chart below:**

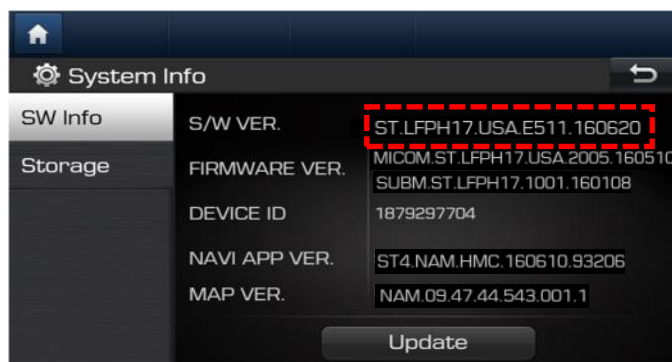
Model	Initial S/W Version	S/W Update SD Card Type
Sonata Hybrid (LF HEV) & Sonata Plug-in Hybrid (LF PHEV)	ST.xxxxx.xxx.xxxx. 170611 or Earlier	Type A (96560-E600 0 QQH)
	ST.xxxxx.xxx.xxxx. 170612 or Newer	Type B (96560-E600 1 QQH)

NOTICE

The update SD cards can be used for either the LF HEV / LF PHEV, depending on the initial S/W version installed.

CAUTION

Confirm correct Update SD Card Type is used. Updating with the incorrect SD Card Type will render the head unit inoperable.



- Remove the map SD card in the slot (D) and insert the S/W Update SD Card Type using the chart in step #5.

NOTE: The original Map Data Base SD card will be reinserted following completion of the update.



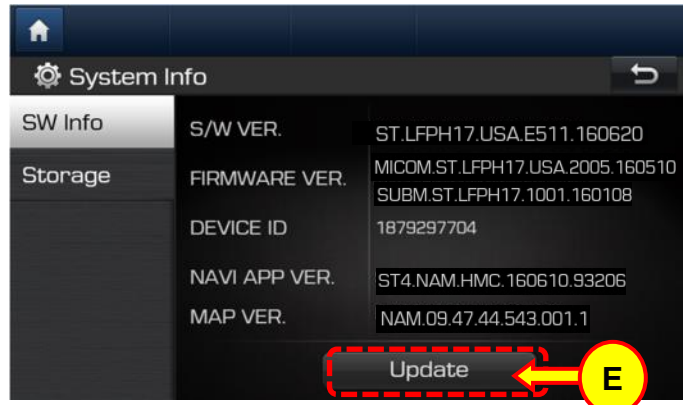
- Press the “Update” icon (E) at the bottom of the screen to proceed with the software update.

NOTICE

Do not remove the SD card, or turn OFF the ignition during the update.

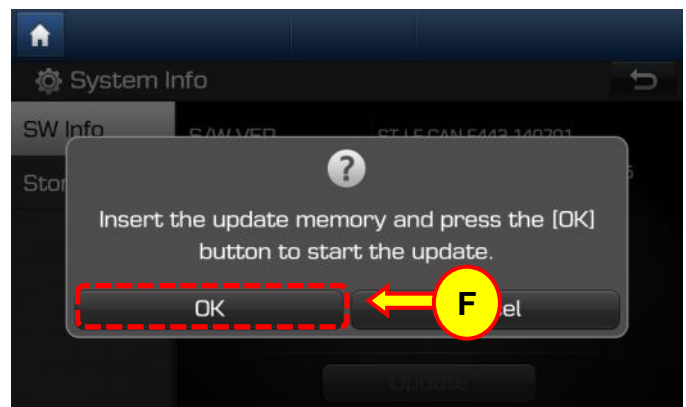
In case the vehicle is turned OFF during the update process, do not remove the SD card. The update will resume after the vehicle is restarted.

If update does not resume, return to the “System Info” menu using steps 2-3 and touch the Update icon to initiate the update again.



Select 'OK' icon (F) on pop-up to begin the update.

Total software update time: ~ 35 minutes.



The software will automatically update through 6 steps:

0. Checking the update files
1. Copying Files (1/6)
2. a. Preparing System Update (2/6) *(System automatically reboots twice during this step. Blank screen will momentarily appear.)*
b. Updating the System
3. Updating Modem (3/6)
4. Updating GPS (4/6)
5. Updating Sub Micom (5/6)
6. Updating Main Micom (6/6)

It will take approximately 35 minutes to complete the update process.

NOTICE

There will be multiple occurrences where the Hyundai logo will appear or display will be black during the update process. This is normal.

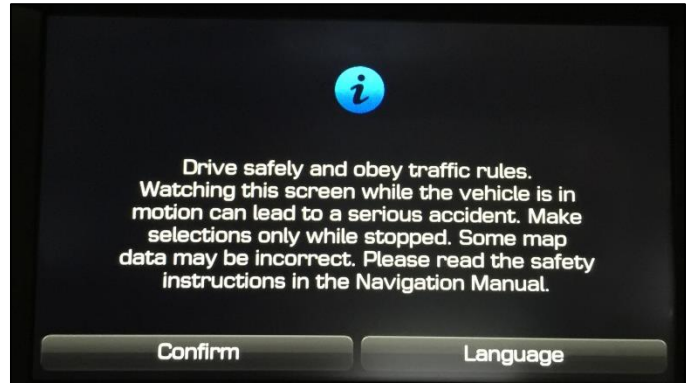


8. The system will reboot automatically after the “Update is complete” message appears.



NOTICE

The software update is completed after the system reboots and the Disclaimer or the Home screen is displayed.



9. Confirm the new firmware version using steps 2-3 and the table listed below.

Model	New Firmware Version
LF HEV	MICOM.ST.LFE17.USA.B005. 170821
LF PHEV	MICOM.ST.LFPH17.USA.B005. 170821

NOTICE

The S/W version will also change after the update is completed. However, only the firmware version is required to be confirmed before proceeding to the next step.



10. Remove the S/W Update SD Card from the slot and insert your original Map DB SD Card. The system will reboot automatically.

11. Once the system has rebooted, confirm that the Navigation map populates. Press the MAP button (G).

