



Technical Bulletin

Model(s)	Year	Eng. Code	Trans. Code	VIN Range From	VIN Range To
Beetle, Beetle Cabrio, Jetta, Jetta SportWagen, Golf, Golf SportWagen, Alltrack, Golf R, Tiguan, Tiguan LWB, CC, Passat, Atlas	2009-2018	All	All	All	All

Condition

87 17 14 November 17, 2017 2043704 Supersedes Technical Bulletin 87-16-18 (V871618) dated September 15, 2016 to include additional 2018 models and model year applicability.

A/C Compressor Replacement, Required Documentation and Flush Procedure

This bulletin applies to any repair that requires replacement of the air conditioning compressor.

Technical Background

Any replacement of A/C compressors-regardless of the reason for failure must have the following performed and recorded with the warranty claim.

- ODIS GFF cooling performance test plan.
- RobinAir print out of the recovered refrigerant volume.
- RobinAir print out of the flush procedure.



Note:

The refrigerant flush procedure must be performed before installing a new compressor.

All documentation is mandatory and without exception for reimbursement.



Technical Bulletin

Production Solution

Not applicable.

Service

1. Before replacing the A/C compressor perform the ODIS AC Performance Test.



Note:

The AC performance test is located in different locations and may be titled differently for different vehicle car lines.

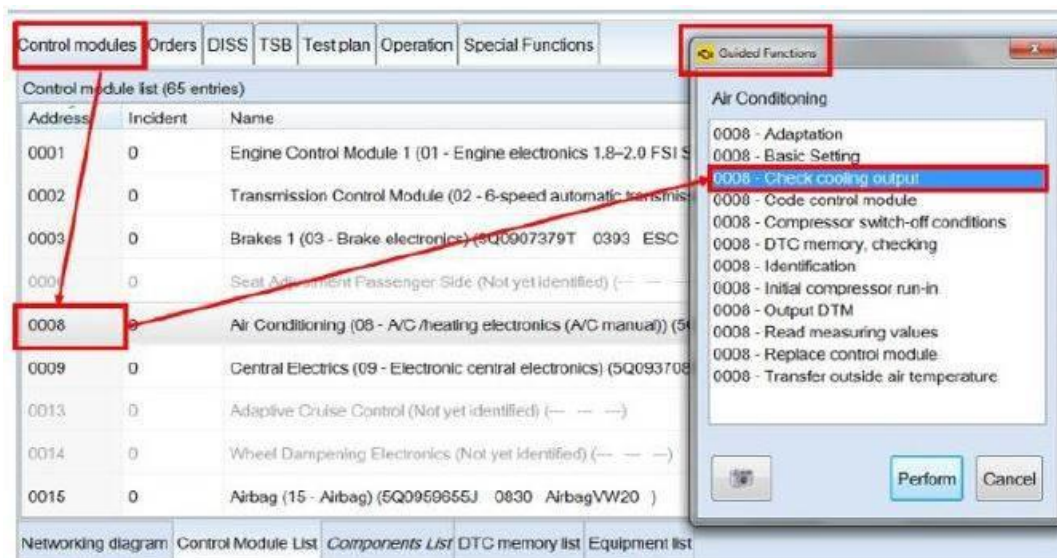


Figure 1: AC Performance test CC Tiguan, Golf, Golf SportWagen, Jetta SportWagen, Jetta, New Beetle, NBC

- Select Guided Functions from 08 AC/heating electrical control module.
- Select Check cooling performance from the Guided functions menu and select perform (Figure 1).



Technical Bulletin

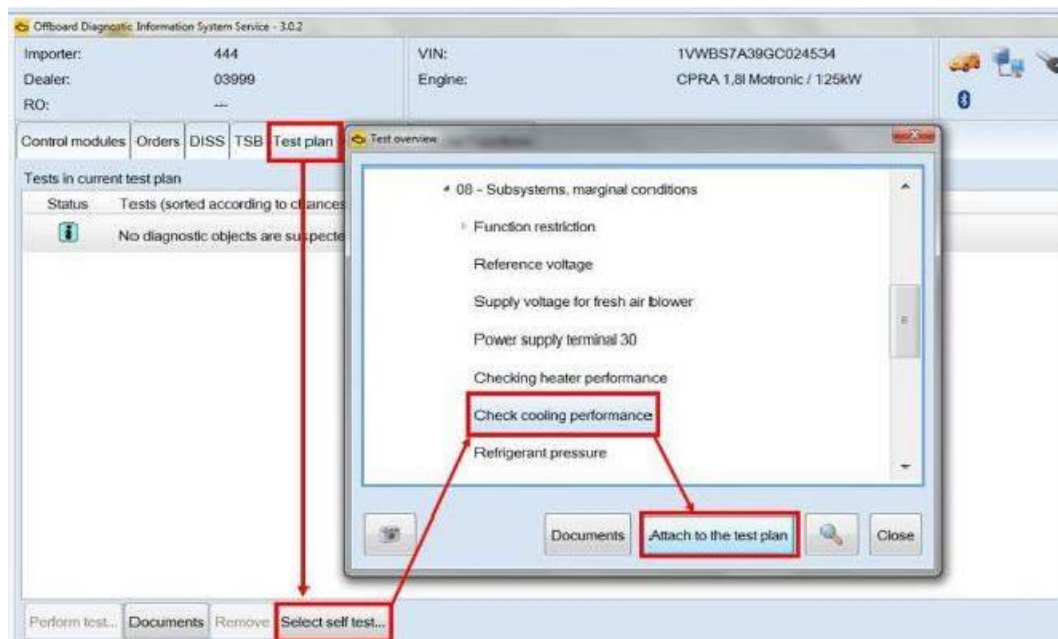


Figure 2: AC Performance test, Passat NMS.

- Select the Test Plan tab from 08 AC/heating electrical control module.
- Select self-test and locate the Check cooling performance test under the following sub menus.
- **Passat:** Body/ Heating Ventilation-Air Conditioning/01 Systems Capable of self-diagnosis/08 Air Conditioning-Heating Electronics/08 Subsystems marginal condition.

2. Follow prompts and complete the test plan.

3. Test result next steps,

- If A/C performance test returns with no malfunctions, then no repairs are needed. The system is operating properly.
- If A/C performance test returns a malfunction, perform diagnosis and repair the system as needed.



Note:

All other applicable bulletins apply.

See TB 2043893 for information on required documentation of recovered refrigerant volume, and **Technical bulletins 2019947 (R134) and 2049039 (R1234yf) for proper cleaning of the refrigerant circuit.**



Technical Bulletin

Warranty



Note:

Claim the time units accumulated from the GFF function test. Time units not to exceed a maximum of 100 TU.

To determine if this procedure is covered under Warranty, always refer to the Warranty Policies and Procedures Manual ¹⁾					
Model(s)	Year	Eng. Code	Trans. Code	VIN Range From	VIN Range To
Beetle, Beetle Cabrio, Jetta, Jetta SportWagen, Golf, Golf SportWagen, Alltrack, Golf R, Tiguan, Tiguan LWB, CC, Passat, Atlas	2009-2018	All	All	All	All
SAGA Coding					
Claim Type:	Use applicable Claim Type ¹⁾				
Service Number:	Damage Code	HST		Damage Location (Depends on Service No.)	
8734	0010	--		Use applicable when indicated in Elsa (L/R)	
Causal Part: Select Labor Operation	01500000				
Diagnostic Time ⁴⁾					
GFF Time expenditure	01500000 = Actual GFF printout - 100 TU max.			YES	
Road Test	01210002 = 00 TU 01210004 = 00 TU			NO	



Technical Bulletin

Technical Diagnosis	01320000 = 00 TU max.	NO
Claim Comment: Input "As per Technical Bulletin 2043704" in comment section of Warranty Claim.		
<ol style="list-style-type: none"> 1) Vehicle may be outside any Warranty in which case this Technical Bulletin is informational only 2) Code per warranty vendor code policy. 3) Labor Time Units (TUs) are subject to change with ELSA updates. 4) Documentation required per Warranty Policies and Procedures Manual. 		

Required Parts and Tools

No special parts required.

Tool Description	Tool No:
Midtronics Battery Tester/Charger	InCharge 940 (INC-940) or GRX3000VAS
VAS Diagnostic Tool	VAS 6150/X & VAS 6160/X with ODIS Service with: current online updates

Additional Information

All part and service references provided in this Technical Bulletin are subject to change and/or removal. Always check with your Parts Dept. and Repair Manuals for the latest information.

Document Control Revision Table			
Instance Number	Published Date	Version Number	Reason For Update
2043704/8	11/17/17	V871714	To include additional models and model year applicability.
2043704/1	5/25/16	V871606	Original publication.