

Replacement Certification Labels and VIN Plates

Service Category Vehicle Interior

Section Interior Panels/Trim

Market USA

Lexus Supports
ASE Certification 

Applicability

YEAR(S)	MODEL(S)	ADDITIONAL INFORMATION
1990 - 2018	CT200H, ES250, ES300, ES300H, ES330, ES350, GS F, GS200T, GS300, GS350, GS400, GS430, GS450H, GS460, GX460, GX470, HS250H, IS F, IS200T, IS250, IS250C, IS300, IS350, IS350C, LC500, LC500H, LFA, LS400, LS430, LS460, LS500, LS500H, LS600H, LX450, LX470, LX570, NX200T, NX300, NX300H, RC F, RC200T, RC300, RC350, RX300, RX330, RX350, RX400H, RX450H, SC300, SC400, SC430	

SUPERSESSION NOTICE

The information contained in this bulletin supersedes SB Nos. L-SB-0048-08, PG007-07, PG016-01, PG015-01, PG004-97, PG003-97, PG003-93, and PG002-90.

Service Bulletin Nos. L-SB-0048-08, PG007-07, PG016-01, PG015-01, PG004-97, PG003-97, PG003-93, and PG002-90 are obsolete and any printed versions should be discarded. Be sure to review the entire content of this bulletin before proceeding.

Replacement Certification Labels and VIN Plates

Introduction

Vehicle replacement certification labels (vinyl label installed on driver door or door post) and VIN plates (metal plate riveted to dashboard) may be available from Lexus, provided the request meets one of the criteria listed in this Service Bulletin.

Figure 1. Certification Label Location

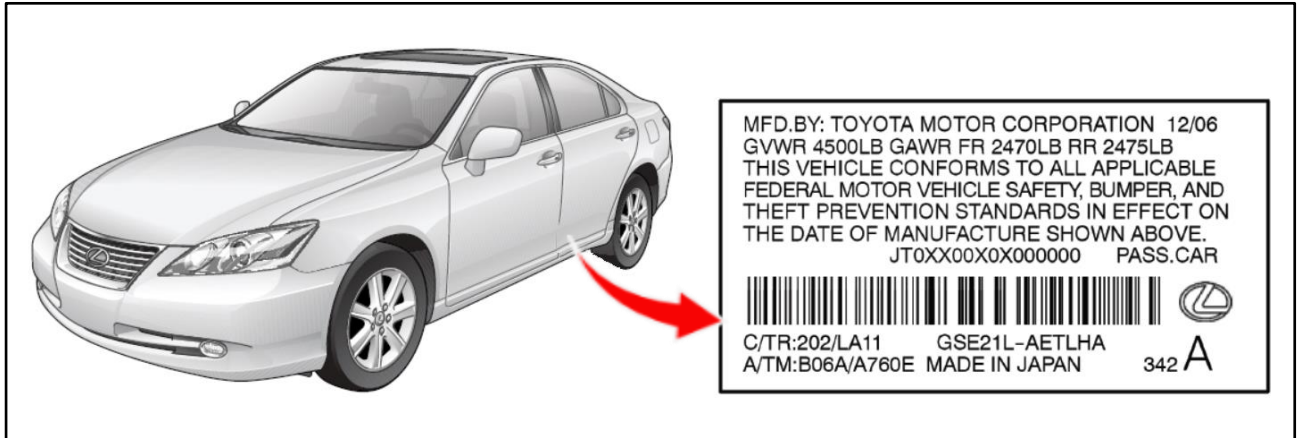
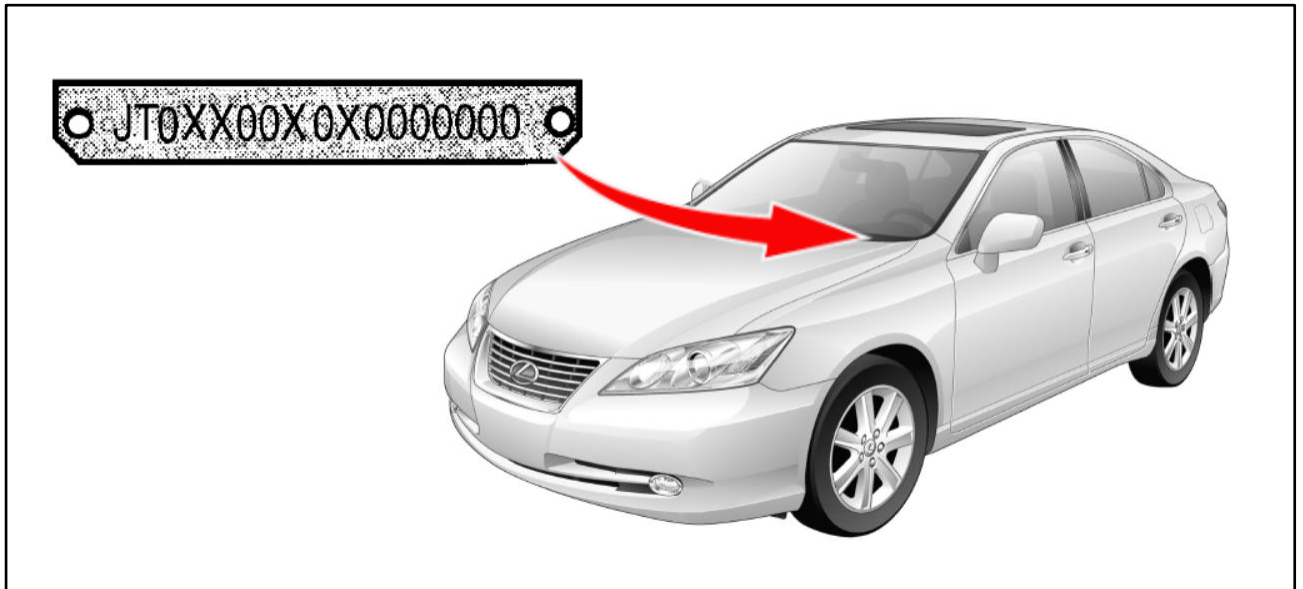


Figure 2. VIN Plate Location



Warranty Information

OP CODE	DESCRIPTION	TIME	OFF	T1	T2
N/A	Not Applicable to Warranty	-	-	-	-

Replacement Certification Labels and VIN Plates

Replacement Certification Label and VIN Plate Criteria

A replacement certification label and/or VIN plate may be requested if:

- The vehicle is in an accident and the label and/or plate is damaged or attached to a part that will be replaced during the repair.
- The label and/or plate is stolen.

NOTE

- Vehicles with body damage require the original label and/or plate as well as a picture of another VIN on the vehicle.
- Vehicles that were stolen **MUST** be reviewed by a field technical specialist. These vehicles **MUST** be accompanied by a police report and pictures of the VIN on the following: frame/body stamp, anti-theft labels, and Techstream Health Check.
- **ALL** replacement certification regulation labels and VIN plates for damaged and/or stolen vehicles are subject to approval by Toyota Technical Compliance. Contact Quality_Compliance@toyota.com for more information.

Procurement Procedure

1. To request a replacement label, complete the applicable form at the end of this bulletin, attach the original label or plate as shown and mail the form to the address provided.

Figure 3.

APPLICATION FOR REPLACEMENT OF DAMAGED LABEL OR PLATE

NOTE: EACH CERTIFICATION LABEL OR VIN PLATE REQUIRES A SEPARATE APPLICATION.

REASON FOR REPLACEMENT:

ACCIDENT DAMAGE

OTHER _____

REASON/EXPLANATION

PLEASE PROVIDE CORRECT VIN: JT0KNXXXXXX XX XXXXX

ATTACH ORIGINAL LABEL OR PLATE HERE (IF POSSIBLE) – SHEET METAL MUST HAVE SHARP EDGES ROUNDED OFF OR TAPED:

TOYOTA REPLACEMENT LABEL

02/16

MFD. BY: TOYOTA MOTOR CORPORATION
 GWR: 2055KG (4525LB)
 GAWR: FRT. 1150KG (2535LB) WITH 225/65R17 TIRES, COLD
 17X6 1/2J RIMS, AT
 RR. 1150KG (2535LB) WITH 225/65R17 TIRES, COLD
 17X6 1/2J RIMS, AT

THIS VEHICLE CONFORMS TO ALL APPLICABLE FEDERAL MOTOR VEHICLE SAFETY AND THEFT PREVENTION STANDARDS IN EFFECT ON THE DATE OF MANUFACTURE SHOWN ABOVE.
 JT0KNXXXXXX MPV

C/TR: 8X7/FB20 ASA42L-ANTXKA
 A/TM: -04A/U780E MADE IN JAPAN 468

Replacement Certification Labels and VIN Plates

Procurement Procedure (Continued)

2. Your dealer parts account will be billed \$60.00 for each replacement of a damaged or stolen label or plate.

NOTE

- Sheet metal **MUST** have sharp edges rounded off or taped.
- In the case that a VIN label cannot be mailed in, a legible and completed Application for Replacement form may be scanned and emailed to: [Quality Compliance@toyota.com](mailto:Quality_Compliance@toyota.com).

