

Rear Brake Drum Squeak

Service Category Brake

Section Brake (rear)

Market USA

Toyota Supports
 ASE Certification 

Applicability

YEAR(S)	MODEL(S)	ADDITIONAL INFORMATION
2011 – 2012	Tacoma	Body Type(s): Double Cab, Regular Cab, Access Cab Drive Type(s): 2WD, 4WD VDS(s): JU4GN, JX4CN, JX4GN, KU4HN, LU4EN, MU4FN, NX4CN, PX4EN, TU4CN, TU4GN, TX4CN, TX4GN, UU4EN, UX4EN

Introduction

When coming to a stop, some 2011 – 2012 model year Tacoma vehicles may exhibit a squeak/squeal noise from the rear brake drum at the end of the stop. Revised rear brake shoes and drums are now available to address this condition.

Production Change Information

Applicable to vehicles produced **BEFORE** the Production Change Effective VINs shown below.

PLANT	WHEEL LUG PATTERN	DRIVETRAIN	PRODUCTION CHANGE EFFECTIVE VIN		
TMMTX	5 Lug	4x2	5TFNX4CN#CX016605		
			5TFTX4CN#CX021121		
			5TFTU4CN#CX001515		
			5TFJX4CN#CX021133		
	6 Lug	PreRunner		5TFTU4GN#CX028063	
				5TFTX4GN#CX013867	
				5TFKU4HN#CX002877	
				5TFJU4GN#CX028049	
				5TFJX4GN#CX013870	
				5TFPX4EN#CX012871	
		4x4			5TFUU4EN#CX047717
					5TFUX4EN#CX015933
					5TFMU4FN#CX009454
					5TFLU4EN#CX047731

Rear Brake Drum Squeak

Production Change Information (Continued)

PLANT	WHEEL LUG PATTERN	DRIVETRAIN	PRODUCTION CHANGE EFFECTIVE VIN
TMMBC	6 Lug	PreRunner	3TMJU4GN#CM138095
			3TMKU4HN#CM033929
		4x4	3TMLU4EN#CM102603
			3TMMU4FN#CM049204

Parts Information

DRIVETRAIN (LUG PATTERN)	PREVIOUS PART NUMBER	CURRENT PART NUMBER	PART NAME	QTY
4x2 (5 Lug)	42431-04050	42431-04070	Drum, Brake	2
	04495-04010	04495-04020	Shoe Kit, Rear Brake	1
	42444-35070	Same	Gasket, Brake Drum	2
4x4 or PreRunner (6 Lug)	42431-04060	42431-04080	Drum, Brake	2
	04495-04010	04495-04020	Shoe Kit, Rear Brake	1
	42444-35050	Same	Gasket, Brake Drum	2
All	08887-80609	Same	Toyota Disk Brake Grease	As Needed

Warranty Information

OP CODE	DESCRIPTION	DRIVETRAIN	TIME	OFF	T1	T2
472021	R & R Rear Brake Shoe Assembly	4x2 and PreRunner	1.1	42431-04050 04495-04010	36	13
		4x4	1.2	42431-04060		

APPLICABLE WARRANTY

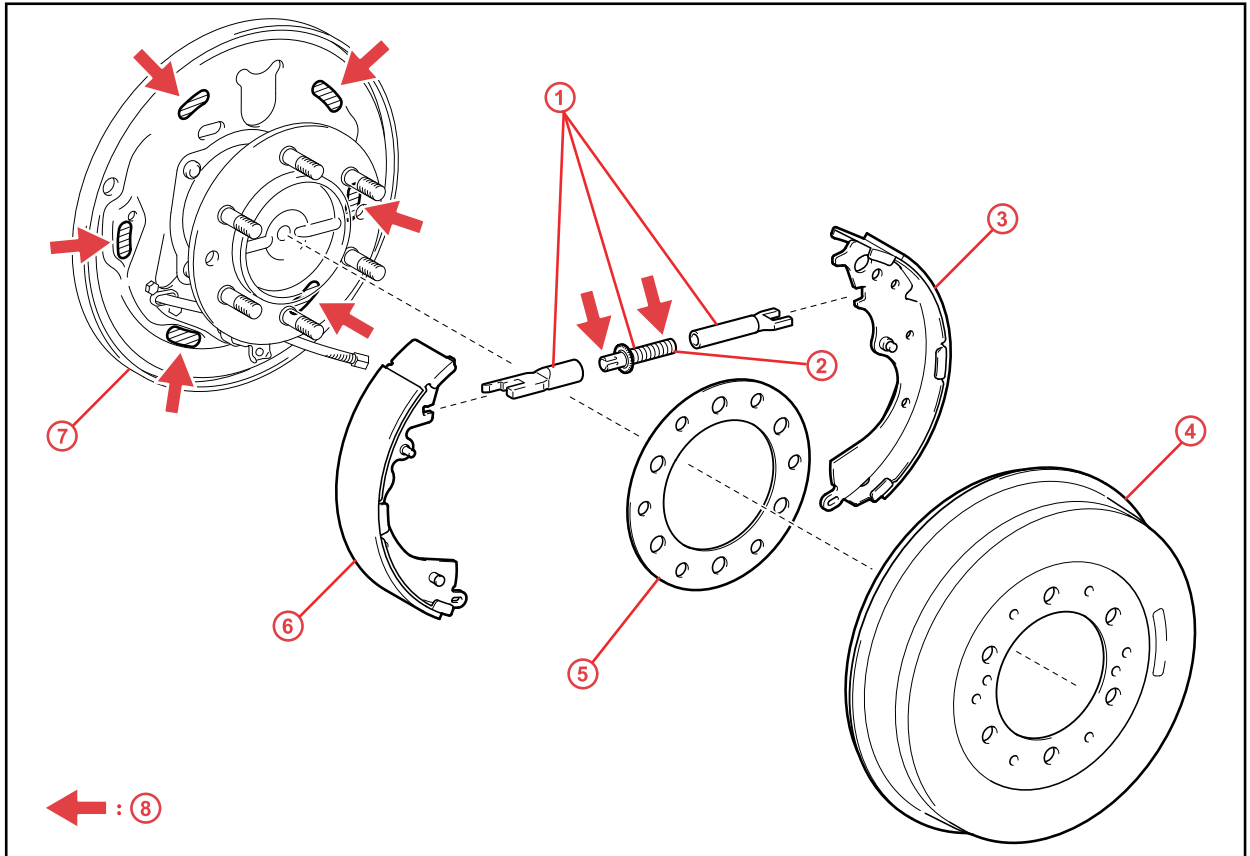
- This repair is covered under the Toyota Basic Warranty. This warranty is in effect for 36 months or 36,000 miles, whichever occurs first, from the vehicle's in-service date.
- Warranty application is limited to occurrence of the specified condition described in this bulletin.

Rear Brake Drum Squeak

Repair Procedure

1. Confirm the rear brake squeak noise.
2. Replace the rear brake shoes, drums, and gaskets with the NEW parts.

Figure 1.



1	Parking Brake Shoe Strut Set
2	Adjusting Bolt
3	Rear Brake Shoe
4	Rear Brake Drum Sub-Assembly

5	Rear Axle Brake Drum Gasket (Non-Reusable Part)
6	Front Brake Shoe
7	Backing Plate
8	Toyota Disk Brake Grease

IMPORTANT
 Use only Toyota Disk Brake Grease on the backing plate and parking brake adjusting bolt.

NOTE
 Please remember to always replace the rear brake drum gasket.

Rear Brake Drum Squeak

Repair Procedure (Continued)

A. Remove rear drums.

Refer to the Technical Information System (TIS), applicable model year Tacoma Repair Manual:

- [2011](#) / [2012](#) Tacoma:
Brake – Brake (Rear) – “Brake: Rear Brake: Removal”

B. Disassemble rear shoes.

Refer to TIS, applicable model year Tacoma Repair Manual:

- [2011](#) / [2012](#) Tacoma:
Brake – Brake (Rear) – “Brake: Rear Brake: Disassembly”

C. Reassemble with NEW rear shoes and NEW brake drum gasket.

Refer to TIS, applicable model year Tacoma Repair Manual:

- [2011](#) / [2012](#) Tacoma:
Brake – Brake (Rear) – “Brake: Rear Brake: Reassembly”

D. Install NEW rear drums and reinstall wheels.

Refer to TIS, applicable model year Tacoma Repair Manual:

- [2011](#) / [2012](#) Tacoma:
Brake – Brake (Rear) – “Brake: Rear Brake: Installation”

3. Test drive and confirm the repair.