

MIL "ON" DTC P0461 (Fuel Level Sensor "A" Circuit Range/Performance)

Service Category Engine/Hybrid System

Section Engine Control

Market USA

Toyota Supports
 ASE Certification 

Applicability

YEAR(S)	MODEL(S)	ADDITIONAL INFORMATION
2012 – 2013	Sequoia	VDS(s): BW5G1, DW5G1, JW5G1
2012 – 2013	Tundra	VDS(s): BW5F1, CW5F1, DW5F1, HW5F1, KW5F1, MW5F1, UW5F1

Introduction

Some 2012 and 2013 model year Sequoia and Tundra vehicles with the 3UR-FBE (5.7 L) engine may exhibit a MIL "ON" condition with Diagnostic Trouble Code (DTC) P0461 (*Fuel Level Sensor "A" Circuit Range/Performance*) after a recent fuel refill. The Engine Control Module/ECM (SAE term: Powertrain Control Module/PCM) logic has been revised to address this condition. Use the following repair procedure to recalibrate the ECM (PCM).

Warranty Information

OP CODE	DESCRIPTION	TIME	MODEL	TOWING OPTION	OPF	T1	T2
EG1202	Recalibrate ECM (PCM) Engine	0.4	Sequoia	Std	89661-0CN20 89661-0CN21	8A	02
				Tow	89661-0CN30 89661-0CN31		
			Tundra	Std	89661-0CM60 89661-0CM61		
				Tow	89661-0CM70 89661-0CM71		

APPLICABLE WARRANTY

- This repair is covered under the Toyota Federal Emission Warranty. This warranty is in effect for 96 months or 80,000 miles, whichever occurs first, from the vehicle's in-service date.
- Warranty application is limited to occurrence of the specified condition described in this bulletin.

MIL "ON" DTC P0461 (Fuel Level Sensor "A" Circuit Range/Performance)

Parts Information

MODEL	ENGINE	TOWING OPTION	PREVIOUS PART NUMBER	CURRENT PART NUMBER	PART NAME	QTY
Sequoia	3UR-FBE	Std	89661-0CN20 89661-0CN21	89661-0CN22	Computer, Engine Control (ECM/PCM)	-
		Tow	89661-0CN30 89661-0CN31	89661-0CN32		-
Tundra		Std	89661-0CM60 89661-0CM61	89661-0CM62		-
		Tow	89661-0CM70 89661-0CM71	89661-0CM72		-

PREVIOUS PART NUMBER	CURRENT PART NUMBER	PART NAME	QTY
00451-00001-LBL	Same	Authorized Modification Labels	1

NOTE

- The ECM (PCM) should NOT be replaced as part of the repair procedure.
- Authorized Modification Labels may be ordered in packages of 25 from the Materials Distribution Center (MDC) through Dealer Daily – Dealer Support Materials Orders.

Calibration Information

MODEL	ENGINE	DRIVETRAIN	TOWING OPTION	PREVIOUS CALIBRATION ID	NEW CALIBRATION ID
Sequoia	3UR-FBE	4WD	Std	30CK5000	30CK5200
				30CK5100	
Tow			30CK6000	30CK6200	
			30CK6100		
Tundra			Std	30CJ9000	30CJ9200
				30CJ9100	
Tow	30CK0000	30CK0200			
	30CK0100				


MIL "ON" DTC P0461 (Fuel Level Sensor "A" Circuit Range/Performance)

Required Tools & Equipment

REQUIRED EQUIPMENT	SUPPLIER	PART NUMBER	QTY
TIS Techstream* or Techstream Lite NOTE: Software version 7.20.041 or later is required.	ADE	TSPKG1 or TSLITEDLR01	1

NOTE

- Additional Techstream units may be ordered by calling Approved Dealer Equipment (ADE) at 1-800-368-6787.
- The Diagnostic Tester is NOT recommended for flash reprogramming with this calibration file. Please use TIS Techstream or an approved J2534 interface to perform this update. Visit techinfo.toyota.com for more information regarding J2534 reprogramming.



SPECIAL SERVICE TOOLS (SST)	PART NUMBER	QTY
GR8 Battery Diagnostic Station*	00002-MCGR8	1

NOTE
Additional SSTs may be ordered by calling 1-800-933-8335.

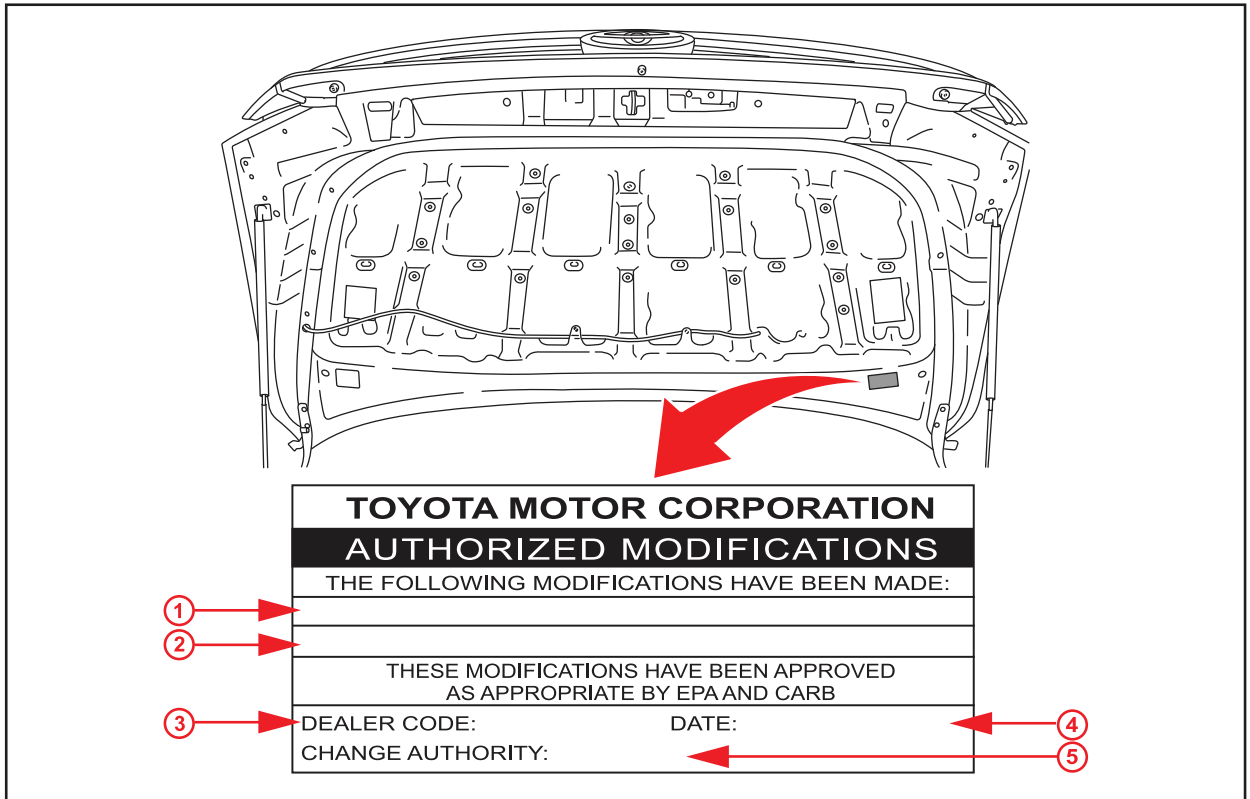
* Essential SST.

MIL "ON" DTC P0461 (Fuel Level Sensor "A" Circuit Range/Performance)

Repair Procedure

1. Confirm the condition matches the Introduction.
2. Check for the Authorized Modifications Label affixed to the vehicle in the location shown in Figure 1. Confirm if the ECM (PCM) calibration has been updated. If the calibration ID listed is NOT the latest ECM (PCM) calibration — go to step 3.

Figure 1. Location of Authorized Modifications Label on 2012 – 2013 Sequoia and Tundra



1	Replacement ECM (PCM) Part Number (i.e., 89661-0CN22)
2	New Calibration ID(s) (i.e., 30CK5200)
3	Dealer Code

4	Date Completed
5	This SB Number

MIL "ON" DTC P0461 (Fuel Level Sensor "A" Circuit Range/Performance)

Repair Procedure (Continued)

- Flash reprogram the ECM (PCM).

NOTE

- The GR8 Battery Diagnostic Station **MUST** be used in Power Supply Mode to maintain battery voltage at 13.5 volts while flash reprogramming the vehicle.
- For details on how to use the GR8 Battery Diagnostic Station, refer to the [GR8 Instruction Manual](#) located on the Technical Information System (TIS), *Diagnostics – Tools & Equipment – Battery Diagnostics*.

Follow the procedures outlined in Service Bulletin No. [T-SB-0064-10](#), "Techstream ECU Flash Reprogramming Procedure", and flash the ECM (PCM) with the NEW calibration file update.

- Install the Authorized Modifications Label.
 - Using a permanent marker, enter the following information on the label:
 - ECM part number [*Refer to the **Parts Information** section for the **CURRENT PART NUMBER***]
 - Calibration ID(s) [*Refer to the **Calibration Identification Chart** for the **NEW CALIBRATION ID***]
 - Dealer Code
 - Repair Date
 - Change Authority [***This bulletin number***]
 - Affix the Authorized Modifications Label to the vehicle at the location shown in Figure 1. The Authorized Modifications Label is available through the MDC, P/N 00451-00001-LBL.
- Test drive the vehicle to confirm proper vehicle operation.