

**TECHNICAL INSTRUCTIONS**  
**FOR**  
**SPECIAL SERVICE CAMPAIGN F0A**  
**ECM SOFTWARE UPDATE**  
**CERTAIN 2012-2014 TUNDRA**  
**CERTAIN 2012-2014 SEQUOIA**

***UPDATED April 11, 2016***

**TECHNICAL INSTRUCTIONS UPDATED NOTICE:**

**Updated 4/11/16**

- Updated Sequoia TRD Supercharger Current CID calibrations.

**Updated 4/7/16**

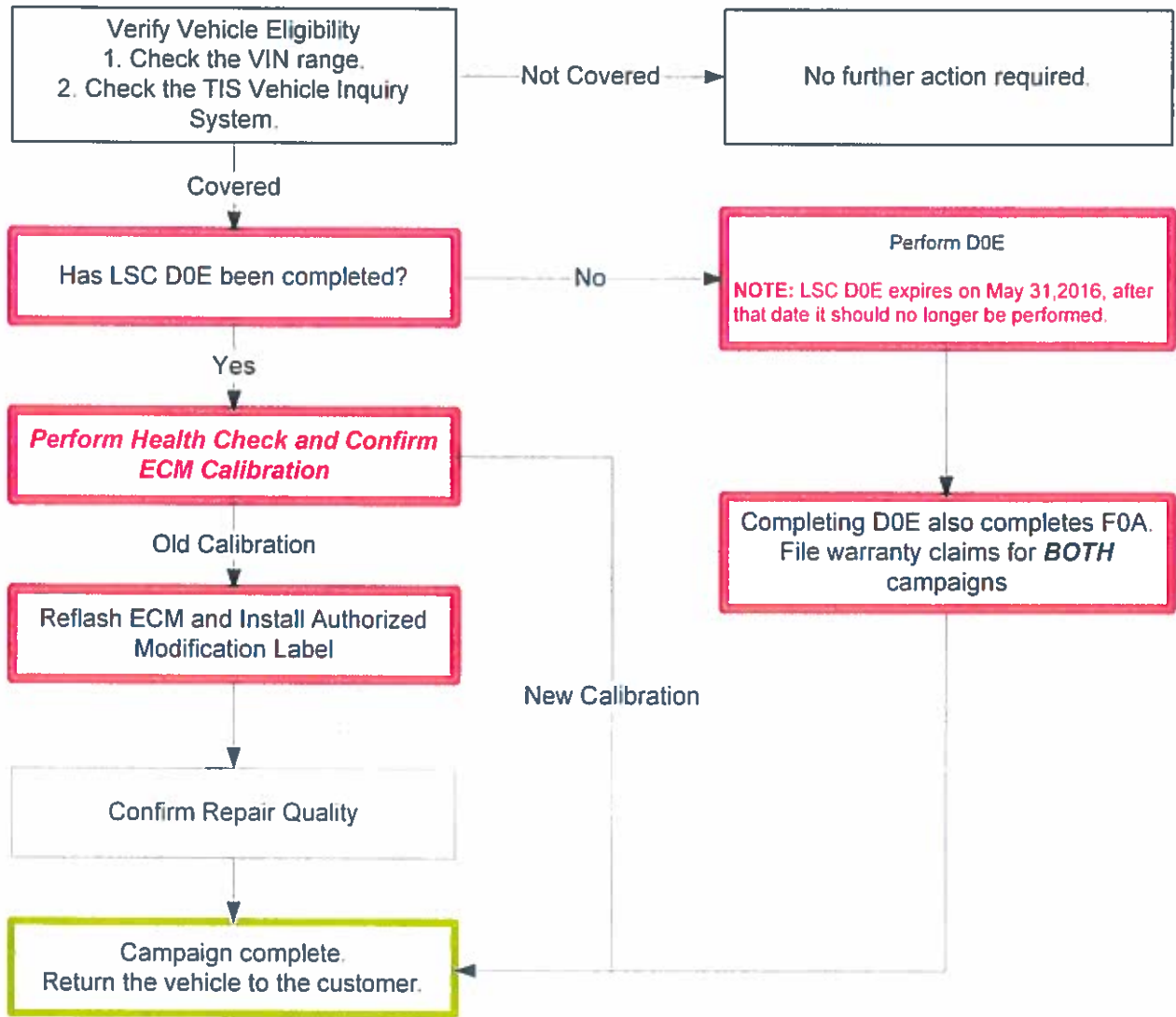
- Now an SSC
- Added calibration table for vehicles equipped with a TRD Supercharger

The repair quality of covered vehicles is extremely important to Toyota. All dealership technicians performing this repair are required to successfully complete the most current version of the E-Learning course "Safety Recall and Service Campaign Essentials". To ensure that all vehicles have the repair performed correctly; technicians performing this repair are required to currently hold at least one of the following certification levels:

- Toyota Certified (Any specialty)
- Expert Technician (Any specialty)
- Master Technician
- Master Diagnostic Technician

Always check which technicians can perform the recall remedy by logging on to <https://www.uotdealerreports.com>. It is the dealership's responsibility to select technicians with the above certification level or greater to perform this repair. Carefully review your resources, the technician skill level, and ability before assigning technicians to this repair. It is important to consider technician days off and vacation schedules to ensure there are properly trained technicians available to perform this repair at all times.

# I. OPERATION FLOW CHART



## NOTE:

**THERE ARE DIFFERENT CALIBRATIONS FOR NORMALLY ASPIRATED VEHICLES AND VEHICLES EQUIPPED WITH A TRD SUPERCHARGER.**

**INSTALLATION OF A TRD SUPERCHARGER CALIBRATION IS NON-REVERSIBLE ONCE INSTALLED.**

## II. IDENTIFICATION OF AFFECTED VEHICLES

### A. COVERED VIN RANGE

- Check the TIS Vehicle Inquiry System to confirm the VIN is involved in this Safety Recall, and that the campaign has not already been completed prior to dealer shipment or by another dealer.
- TMS warranty will not reimburse dealers for repairs conducted on vehicles that are not affected or were completed by another dealer.

## III. PREPARATION

### A. PARTS

Part Number	Part Description	Quantity
00451-00001-LBL	Authorized Modification Label*	1

\*Labels can be ordered in packs of 25 from the MDC through Dealer Daily website

### B. TOOLS & EQUIPMENT

- Techstream 2.0 / TIS Techstream /Techstream Lite (Software 9.30.029 or Higher)
- GR8 Battery Diagnostic Station

## IV. BACKGROUND

In certain 2012 – 2014 Model Year Toyota Tundra and Sequoia vehicles equipped with a 5.7 Liter gasoline or 5.7 Liter-Flex Fuel engines, the Engine Control Module (ECM) may set a Diagnostic Trouble Code (DTC) if debris/ice becomes lodged in the air switching valve. If this occurs, the Malfunction Indicator (Check Engine) Light could illuminate and the vehicle could enter a "Fail-Safe" Mode (also known as "Limp-Home" Mode). If this occurs the vehicle's power and speed will be reduced, which could inconvenience you and require immediate repair.

## V. CAMPAIGN D0E COMPLETION VERIFICATION

### 1. USE TIS TO CHECK COMPLETION STATUS OF CAMPAIGN D0E

The screenshot shows the Toyota TIS 'Vehicle Inquiry' page. At the top, there are navigation tabs for 'Home', 'TIS', and 'TOYOTA'. Below these are tabs for 'Library', 'Diagnostics', 'Tech Assistance', and 'Vehicle Inquiry'. The 'Vehicle Inquiry' tab is active, leading to the 'Vehicle Identification Number Search' section. A red box highlights the search input field with the text 'a. Input VIN and click 'Lookup''. The VIN entered is 'STD-BW5G1-000000000'. Below the search section is the 'Vehicle Information' section, which displays various details for a Toyota Sequoia, including Division, Model, Grade, Model Year, Drive Type, Body Type, Engine Family, Transmission, Date of First Use, Production Date, Plant Code, VIN, Exterior Color, Interior Color, and Interior Trim Color. Below this is the 'Service Campaign' section, which shows a 'Limited Service Campaign D0E' with a 'Completion Status' of 'Completed'. A red box highlights the completion status with the text 'b. Confirm the completion status of D0E.' and a note: 'NOTE: If campaign D0E is not applicable to the VIN, D0E will not be shown here.' The footer of the page includes '© 2014 Toyota Motor Sales, Inc.' and a 'Feedback' link.

CAMPAIGN D0E STATUS	ACTION REQUIRED
D0E shows as <i>completed</i> on TIS.	Proceed to SECTION VI. ECM CALIBRATION ID VERIFICATION
D0E is not applicable to VIN.	Proceed to SECTION VI. ECM CALIBRATION ID VERIFICATION
D0E shows as <i>incomplete</i> on TIS.	Perform D0E. Performing D0E will also complete F0A. NOTE: LSC D0E expires on May 31,2016, after that date it should no longer be performed.

## VI. ECM CALIBRATION ID VERIFICATION



- The following calibrations are for normally aspirated vehicles only. If the vehicle is equipped with a TRD Supercharger refer to the APPENDIX for the supercharger calibrations.

### 1. CONFIRM THE ECM CALIBRATION ID

- Perform a health check and confirm no DTCs are present.
- Confirm the current calibration ID in the ECM.
- Referencing the table below, verify if the ECM has the Updated Calibration

MODEL	YEAR	ENGINE	DRIVE	OPTION	ECU	CURRENT CID	NEW CID	
Tundra	2012-2013	3UR-FE	2WD	-	-	30CJ5000	<a href="#">30CJ5400</a>	
						30CJ5100		
						30CJ5200		
						30CJ5300		
			4WD			30CJ5001		<a href="#">30CJ5401</a>
						30CJ5101		
						30CJ5201		
						30CJ5301		
		3UR-FBE	2WD	Towing	-	30CJ6000	<a href="#">30CJ6400</a>	
						30CJ6100		
						30CJ6200		
						30CJ6300		
			4WD			30CJ6001		<a href="#">30CJ6401</a>
						30CJ6101		
						30CJ6201		
						30CJ6301		
	3UR-FBE	4WD	-	-	30CJ9000	<a href="#">30CJ9500</a>		
					30CJ9100			
					30CJ9200			
					30CJ9300			
		Towing			30CK0000		<a href="#">30CK0500</a>	
					30CK0100			
					30CK0200			
					30CK0300			
	2014	3UR-FE	2WD	-	Main	30CL0000	<a href="#">30CL0200 / 50C80100</a>	
						30CL0100		
						Sub		50C80000
						30CL0001		<a href="#">30CL0201 / 50C80101</a>
			30CL0101					
			Sub			50C80001		
			30CL1000			<a href="#">30CL1200 / 50C81100</a>		
			30CL1100					
Sub		50C81000						
30CL1001		<a href="#">30CL1201 / 50C81101</a>						
30CL1101								
Sub			50C81001					
30CL3000			<a href="#">30CL3200 / 50C83100</a>					
30CL3100								
Sub		50C83000						
30CL4000		<a href="#">30CL4200 / 50C84100</a>						
30CL4100								
Sub	50C84000							
3UR-FBE	4WD		Towing	-	Main	30CL3000	<a href="#">30CL3200 / 50C83100</a>	
		30CL3100						
		Sub				50C83000		
		30CL4000				<a href="#">30CL4200 / 50C84100</a>		
30CL4100								
Sub	50C84000							
30CL4000								

MODEL	YEAR	ENGINE	DRIVE	OPTION	ECU	CURRENT CID	NEW CID	
Sequoia	2012-2013	3UR-FE	2WD	-	-	30CK2000	<a href="#">30CK2400</a>	
						30CK2100		
						30CK2200		
						30CK2300		
			30CK2001			<a href="#">30CK2401</a>		
			30CK2101					
			30CK2201					
			30CK2301					
		4WD	Towing	-	30CK1000	<a href="#">30CK1400</a>		
					30CK1100			
					30CK1200			
					30CK1300			
		2WD			-	30CK1001	<a href="#">30CK1401</a>	
						30CK1101		
						30CK1201		
						30CK1301		
	4WD	Towing	-	30CK5000	<a href="#">30CK5500</a>			
				30CK5100				
				30CK5200				
				30CK5300				
	3UR-FBE			4WD	-	30CK5400	<a href="#">30CK6500</a>	
						30CK6000		
						30CK6100		
						30CK6200		
	Towing	-	30CK6300					
			30CK6400					
			30CJ4000	<a href="#">30CJ4200 / 50C88100</a>				
			30CJ4100					
	2014	3UR-FE	2WD	-	Main	50C88000	<a href="#">30CJ4201 / 50C88101</a>	
					Sub	30CJ4001		
4WD			Main		30CJ4101			
			Sub		50C88001			
2WD		Towing	-		Main	30CG3000	<a href="#">30CG3200 / 50C87100</a>	
					Sub	50C87000		
					4WD	Main	30CG3001	<a href="#">30CG3201 / 50C87101</a>
						Sub	50V87001	
3UR-FBE	4WD	Towing & Non-Towing	Main	30CM0000	<a href="#">30CM0200 / 50CA2100</a>			
			Sub	30CM0100				
			50CA2000					



- If the ECM has already been calibrated with the new calibration the campaign is complete.

## ◀ CRITICAL MESSAGE ▶

It is *critical* that [T-SB-0012-13](#) in addition to the Technical Instructions for this LSC are followed. This TSB outlines all steps necessary to prevent reprogramming failure. Toyota will not provide reimbursement coverage for reprogramming failures if this TSB is not followed. If you have a reprogramming failure that requires ECU replacement and the Technical Instructions *and* TSB were followed correctly, please create a case with the Technical Assistance Hotline documenting all information related to the failure. If sufficient reporting is received related to re-flash failure, there will be consideration for reimbursement.

**NOTE:** There will be a limited inventory of ECUs available in the rare case that a reprogramming failure occurs.

## VII. ECM REFLASH PROCEDURE



- For general reprogramming procedures, refer to [T-SB-0012-13](#).
- Confirm the latest version of Techstream software is being used.
- If the Techstream does not have sufficient battery power the reflash will fail.
- Confirm the DLC3 cable is in good condition before attempting reflash.
- If vehicle exhibits any trouble codes or drivability symptoms, diagnose and repair using TIS before attempting to reprogram the ECM.

### 1. CONNECT THE GR8

- a) Set the GR8 to Power Supply Mode to help maintain 13.5 volts during ECM reprogramming.



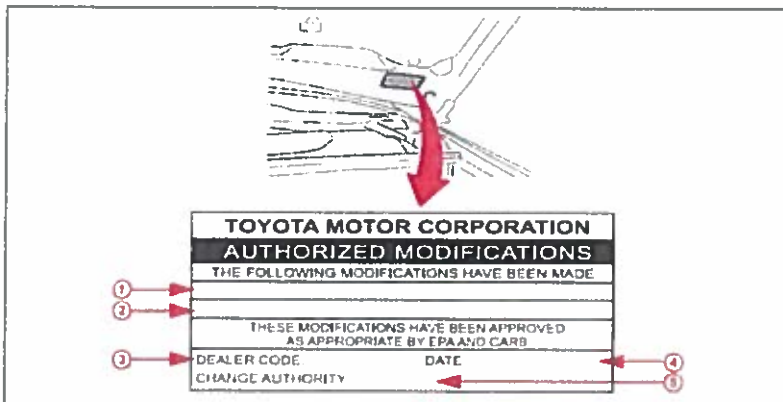
- A battery charger set to power supply mode **MUST** be used during reprogramming.
- ECM damage may occur if the correct battery charger setting is not used.

### 2. REFLASH THE ECM

- a) Click yes on the health check results screen, or follow the links on the table above to begin the reflash process.

### 3. ATTACH THE AUTHORIZED VEHICLE MODIFICATION LABEL

- a) Fill out the label.
- b) Affix the label to the under-side of the hood.



1	Replacement ECM P/N
2	New Calibration ID
3	Dealer Code
4	Date Completed
5	Campaign Code (FOA)

### 4. CHECK FOR DTCs

## ◀ VERIFY REPAIR QUALITY ▶

- Confirm the GR8 is set up properly prior to beginning the reprogramming
- Confirm the reflash completes successfully
- Confirm the Authorized Vehicle Modification Label is filled out and affixed to the vehicle
- Confirm there are no DTCs in the ECM

If you have any questions regarding this update, please contact your regional representative

## VIII. APPENDIX

### A. CALIBRATIONS FOR VEHICLES EQUIPPED WITH A TRD SUPERCHARGER



- The following calibrations are vehicles is equipped with a TRD Supercharger ONLY. Refer to pages 5 & 6 for normally aspirated vehicles.
- Installation of a TRD calibration file is non-reversible once installed.



MODEL	YEAR	ENGINE	DRIVE	OPTION	ECU	CURRENT CID	NEW CID
Tundra	2012-2013	3UR-FE	2WD			30CJ5000	<a href="#">3YWF9400</a>
						30CJ5100	
						30CJ5200	
						30CJ5300	
						30CJ5400	
						3YWF5500	
						3YWF5700	
						3YWF5900	
			3YWF6800			<a href="#">3YWF9401</a>	
			30CJ5001				
			30CJ5101				
			30CJ5201				
			30CJ5301				
			30CJ5401				
			3YWF5501				
			3YWF5701				
			3YWF5901			<a href="#">3YWF9500</a>	
			3YWF6801				
			30CJ6000				
			30CJ6100				
			30CJ6200				
			30CJ6300				
			30CJ6400				
			3YWF5600				
			3YWF5800			<a href="#">3YWF9501</a>	
			3YWF6000				
			3YWF6900				
			30CJ6001				
30CJ6101							
30CJ6201							
30CJ6301							
30CJ6401							
3YWF5601							
3YWF5801							
3YWF6001							
3YWF6901							



MODEL	YEAR	ENGINE	DRIVE	OPTION	ECU	CURRENT CID	NEW CID	
Tundra	2014	3UR-FE	2WD			30CL0000	<a href="#">3YWF9800</a>	
						30CL0100		
						30CL0200		
						3YWF7800		
						3YWF9200		
						3YWF9600		
			4WD			30CL0001	<a href="#">3YWF9801</a>	
						30CL0101		
						30CL0201		
						3YWF7801		
						3YWF9201		
						3YWF9601		
			2WD			Towing	30CL1000	<a href="#">3YWF9900</a>
							30CL1100	
							30CL1200	
							3YWF7900	
3YWF9300								
3YWF9700								
4WD	30CL1001	<a href="#">3YWF9901</a>						
	30CL1101							
	30CL1201							
	3YWF7901							
	3YWF9301							
	3YWF9701							

MODEL	YEAR	ENGINE	DRIVE	OPTION	ECU	CURRENT CID	NEW CID	
Sequoia	2012-2013	3UR-FE	2WD			30CL1101	<a href="#">3YWL5700</a>	
						30CL1201		
						30CK2200		
						30CK2300		
						30CK2400		
						3YWL3500		
						3YWL3700		
						3YWL3900		
			4WD			3YWL4700	<a href="#">3YWL5701</a>	
						30CK2001		
						30CK2101		
						30CK2201		
						30CK2301		
						30CK2401		
						3YWL3501		
						3YWL3701		
			2WD			Towing	3YWL3901	<a href="#">3YWL5800</a>
							3YWL4701	
							30CK1000	
							30CK1100	
							30CK1200	
							30CK1300	
							30CK1400	
							3YWL3600	
4WD	3YWL3800	<a href="#">3YWL5801</a>						
	3YWL4000							
	3YWL4800							
	30CK1001							
	30CK1101							
	30CK1201							
	30CK1301							
	30CK1401							
3YWL3601								
3YWL3801								
3YWL4001								
3YWL4801								

**NOTE: Supercharger installation not approved for 2014 MY Sequoia vehicles.**

## B. CAMPAIGN DESIGNATION DECODER

