

Lonnie Peterson / TMS Toyota Customer Services  
Product Quality and Service Support, Quality Compliance  
May 6, 2015  
Approved By: Bob Waltz

To: All Toyota Dealers  
From: Product Support Division

**Update: 5/6/2015: Customer Handling Reference Guide Revision 3 Available**

**Warranty Enhancement Program – ZE7**  
**\*\*\* Customer Handling Reference Guide – REVISION 3\*\*\***

Toyota has updated the Customer Handling Reference Guide to include the expansion vehicles; please refer to TIS for the most current version. All previous versions of this document should be discarded. Please review this guide along with the previously provided FAQ to respond to customer inquiries. Laminated hard copies of the updated guide will be sent to your dealership service manager in the near future.

Thank you for your support.

## Background

Toyota is preparing a Warranty Enhancement Program to extend warranty coverage to address customer complaints of Excessive Engine Oil Consumption on certain vehicles equipped with 2AZ Engine.

This Warranty Enhancement Program is being launched in two phases due to current part production capacity limitations. The first owner notification letter will advise customers that they may seek reimbursement consideration for previous repair costs related to excessive engine oil consumption. The letter will also inform customers that Toyota is unable to support part replacement for Engine Oil Consumption at this time. Additionally, owners will be advised that if they believe their vehicle has excessive engine oil consumption, they can contact an authorized Toyota dealer to have the engine oil consumption test performed to determine if they will be eligible for future part replacement once sufficient parts are available.

Phase	Description	Tentative Schedule
1	Reimbursement Only	Mid-December, 2014
2	Part Replacement for Excessive Engine Oil Consumption	Mid-May, 2015

## Program Coverage

This Warranty Enhancement Program provides a Primary and Secondary coverage extension to the vehicle's "New Vehicle Limited Warranty" for part replacement related to Excessive Engine Oil Consumption. If the condition is verified, necessary parts will be replaced in accordance with the applicable Technical Service Bulletin under the terms of this Warranty Enhancement Program.

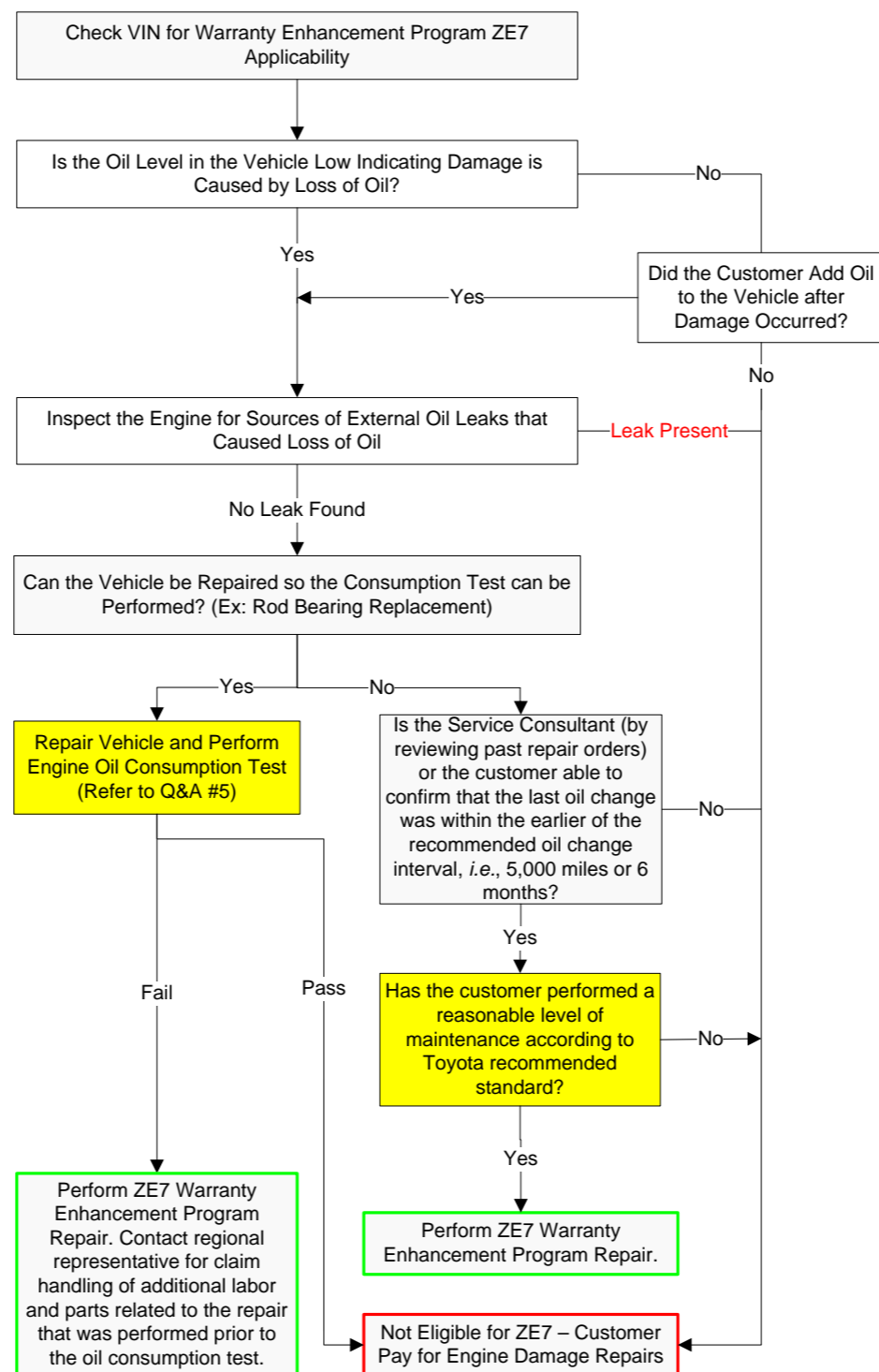
- The **Primary Coverage** offers warranty enhancement until October 31, 2016, regardless of mileage.
- After the Primary Coverage period ends, **the Secondary Coverage** is applicable for 10 years from the date of first use or 150,000 miles, whichever occurs first.

## Model Applicability and Oil Change Interval Reference Table

Model	Model Year	Oil Type	Qty.	Oil Change Interval
Camry	2007-2009	0W-20 or 5W-20	4.5 qt	5,000/6 months
Camry Hybrid	2007-2011	0W-20 or 5W-20	4.5 qt	5,000/6 months
Camry Solara	2007-2008	0W-20 or 5W-20	4.5 qt	5,000/6 months
Corolla	2009-2011	0W-20 or 5W-20	4.0 qt	5,000/6 months
Corolla Matrix	2009-2013	0W-20 or 5W-20	4.0 qt	5,000/6 months
RAV4	2006-2008	0W-20 or 5W-20	4.5 qt	5,000/6 months
Scion tC	2007-2010	0W-20 or 5W-20	4.0 qt	5,000/6 months
Scion xB	2008-2015	0W-20 or 5W-20	4.5 qt	5,000/6 months

Revision 3: Published 5/06/2015

## Handling of vehicles that arrive with engine damage and there has not been an oil consumption test performed.



## Frequently Asked Questions:

- Q1:** I had the oil consumption test initiated, however when I returned to the dealer I was out of the specified range, can I have another test performed?  
**A1:** Another oil consumption test can be requested after 5,000 miles or 6 months has lapsed since the first test was completed if the vehicle is still within the terms and conditions of the warranty enhancement program.  
**Q1A:** What if I want the second test performed before 6 months or 5,000 miles?  
**A1A:** If you elect to immediately have another test performed, and not wait the required time, the cost of the test would be your responsibility.
- Q2:** Do I need to return to the same dealership to have the results of the consumption test confirmed?  
**A2:** Yes, we ask that you return to the same dealership to have the second portion of your test completed.
- Q3:** My vehicle failed the oil consumption test, when can it be repaired?  
**A3:** The parts for the Warranty Enhancement repair are not yet available, you will receive a second notification when parts become available and the necessary work can be performed. In the meantime since your vehicle is consuming oil, please be sure to check the oil level on a regular basis as recommended in your vehicle's Owner's Manual and top off the vehicle as necessary. If engine damage occurs while you are awaiting the parts for the Warranty Enhancement repair because the engine oil in your vehicle was depleted, the engine damage will not be covered by Toyota.
- Q4:** If my vehicle has been confirmed to exhibit excessive oil consumption, will I be reimbursed for the oil I have to add until the repair can be performed under the parts replacement portion of the Warranty Enhancement program?  
**A4:** Yes, if your vehicle has been confirmed to exhibit excessive oil consumption and you are awaiting parts, please follow the reimbursement instructions in the owner letter for oil added to the vehicle until the repair is performed.
- Q5:** My vehicle currently has engine damage and requires repair before I can have the test performed. Will Toyota cover the cost?  
**A5:** Repair coverage under this program is dependent on the result of the dealer performed engine oil consumption test. At this time it has not been determined your vehicles engine damage is a result of excessive engine oil consumption. If your vehicle can be repaired so the engine oil consumption test can be performed, you will be asked to cover the cost of the repair. Following the repair, the dealer will initiate the engine oil consumption test. If it is determined your vehicle has excessive engine oil consumption the Warranty Enhancement Program repair will be performed at no charge to you. Additionally the cost you incurred to repair the vehicle so the test could be performed will be reimbursable.
- Q6:** Can I have a rental vehicle until the repair can be performed?  
**A6:** A confirmed diagnosis of an excessive oil consumption issue by a dealer does not pose any safety concerns. Therefore, you may continue to drive your vehicle until the engine oil consumption issue can be addressed. Please be sure to check the oil level frequently as recommended in your vehicle's Owner's Manual and add engine oil as needed.
- Q7:** Are there any special circumstances when I can have a rental vehicle?  
**A7:** Toyota reserves the use of rental vehicles for customer who drive extensive distance in a short period of time or vehicles that have severe engine oil consumption condition which would require immediate repair. All rental considerations are to be reviewed by a regional representative prior to authorization. If approved, on a limited case by case basis Toyota will provide a rental vehicle free of charge until the repair can be performed.

Note: Additional FAQ information can be found in the Dealer and Owner FAQ on TIS.