

Electrical malfunction in seat

Topic number	LI91.16-P-061637
Version	1
Design group	91.16 Head restraints
Date	06-18-2015
Validity	Model series 164 and model series 251 Model series 221 up to VIN #169793 Model series 204
Reason for change	Model series 204 added
Reason for block	

Complaint:

An electrical function of the seat adjustment system or head restraint is nonfunctional or is operating implausibly.

Cause:

Damage to the seat wiring harness

Attachments	
File	Description
PIC 10.jpg	Position of damage
PIC15.jpg	Retaining clip
PIC13.jpg	Backrest hinge

Remedy:

The seat wiring harness must be checked for visible damage and, using an ohmmeter, for internal damage and short circuit to vehicle ground.

Remedy for model series 164/ 251:

- The damaged part of the wiring harness must be exposed and repaired as per the work instructions AR00.19-p-0001A.
- Cut felt to dimension 70mm x 50mm and bond to the strut (PIC 6)
- Check whether white the double clip is installed.
- If the double clip (PIC 9) is not present, secure the wiring harness using cable tie A 002 997 24 90 at the available 2 holes (for position, see PIC 7 and PIC 8) of the cushion shell.

If the holes are not present, they must be drilled (determine the position using PIC 7 and PIC 8) with a diameter of 6mm.

If the solenoid of the head restraint is damaged / blown, replace the head restraint.

BR221:

- The damaged part of the wiring harness (see PIC 10) must be exposed and repaired as per the work instructions AR00.19-p-0001A.
- Additionally fix the cable set at the described positions (PIC 11, PIC 12) using cable ties.

If the solenoid of the head restraint is damaged / blown, replace the head restraint.

Model series 204:

- Check the wiring harness at the side of the seat at the retaining clip (see PIC15) and at the hinge (see PIC13) for damage and repair as the work instructions AR00.19-p-0001A.

- Attach felt to the retaining clip and hinge as per the description (see PIC 15 and 13).

Attachments	
File	Description
PIC 6.jpg	Felt
PIC 7.jpg	Position of cable tie
PIC 8.jpg	Position of cable tie
PIC 9.jpg	Double clip
PIC 11.jpg	Position of cable tie
PIC 12.jpg	Position of cable tie

Symptoms
Body / Seat / Head restraint adjustment / Cannot be adjusted
Body / Seat / Head restraint adjustment / Indicator/function lamps
Body / Seat / Head restraint adjustment / Does not latch

Control unit/fault code		
Control unit	Fault code	Fault text
AB-Airbag (ARCADE) (M (164),GL (164))	917D	The ignition circuits of components Y24/12 (Driver NECK-PRO head restraint solenoid) and Y24/13 (Front passenger NECK-PRO head restraint solenoid) are short circuited to each other.
AB-Airbag (ARCADE) (M (164),GL (164))	917B	Component Y24/13 (Front passenger NECK-PRO head restraint solenoid) has a short circuit to positive.
AB-Airbag (ARCADE) (M (164),GL (164))	917F	Component Y24/13 (Front passenger NECK-PRO head restraint solenoid) has a short circuit to positive or is defective.
AB-Airbag (ARCADE) (M (164),GL (164))	917E	Component Y24/12 (Driver NECK-PRO head restraint solenoid) has a short circuit to positive or is defective.
AB-Airbag (ARCADE) (M (164),GL (164))	917A	Component Y24/13 (Front passenger NECK-PRO head restraint solenoid) has a short circuit to ground or an open circuit.
AB-Airbag (ARCADE) (M (164),GL (164))	9177	Component Y24/12 (Driver NECK-PRO head restraint solenoid) has a short circuit to positive.
AB-Airbag (ARCADE) (M (164),GL (164))	9176	Component Y24/12 (Driver NECK-PRO head restraint solenoid) has a short circuit to ground or an open circuit.

Parts						
Part number	ES1	ES2	Designation	Quantity	Note	EPC
A0019835210			Felt	1	Available by the meter, quantity as required!	X
A0029972490			Cable tie	3		X

Work units				
Op. no.	Operation text	Time	Damage code	Note

			51148 22	Front seat head restraint solenoid connector/line
--	--	--	----------	---

WIS-References

Document number	Title	Note	Allocation
AR00.19-p-0001A	Repair wiring harness in accordance with specified repair method		Remedy

Validity

Vehicle	Engine	Transmission
164.120	*	*
164.122	*	*
164.125	*	*
164.128	*	*
164.172	*	*
164.175	*	*
164.177	*	*
164.186	*	*
164.822	*	*
164.825	*	*
164.828	*	*
164.871	*	*
164.886	*	*
204.002	*	*
204.003	*	*
204.006	*	*
204.007	*	*
204.008	*	*
204.022	*	*
204.041	*	*
204.044	*	*
204.045	*	*
204.046	*	*
204.047	*	*
204.052	*	*
204.054	*	*
204.056	*	*
204.065	*	*
204.081	*	*
204.085	*	*
204.087	*	*

204.089	*	*
204.202	*	*
204.203	*	*
204.207	*	*
204.208	*	*
204.222	*	*
204.241	*	*
204.245	*	*
204.246	*	*
204.247	*	*
204.252	*	*
204.254	*	*
204.256	*	*
204.289	*	*
221.022	*	*
221.028	*	*
221.054	*	*
221.056	*	*
221.070	*	*
221.071	*	*
221.077	*	*
221.080	*	*
221.084	*	*
221.086	*	*
221.087	*	*
221.095	*	*
221.122	*	*
221.128	*	*
221.154	*	*
221.156	*	*
221.170	*	*
221.171	*	*
221.176	*	*
221.177	*	*
221.179	*	*
221.180	*	*
221.184	*	*
221.186	*	*
221.187	*	*
221.195	*	*

Full model designation breakdown

Vehicle	Engine	Transmission
164.120	642.940	722.902
164.122	642.940	722.902
164.125	642.820	722.902
164.128	629.912	722.903
164.172	273.963	722.904
164.175	113.964	722.901
164.177	156.980	722.907
164.186	272.967	722.906
164.822	642.940	722.902
164.825	642.820	722.902
164.828	629.912	722.903
164.871	273.923	722.904
164.886	273.963	722.904
204.002	651.911	711.653
204.002	651.911	716.656
204.002	651.911	722.646
204.002	651.911	722.908
204.003	651.911	711.670
204.003	651.911	722.646
204.003	651.911	722.908
204.006	646.812	711.655
204.006	646.812	716.608
204.006	646.812	716.657
204.006	646.812	722.699
204.007	646.811	711.655
204.007	646.811	716.608
204.007	646.811	716.655
204.007	646.811	716.657
204.007	646.811	722.699
204.008	646.811	716.657
204.008	646.811	722.640
204.022	642.960	711.670
204.022	642.960	722.902
204.041	271.950	711.656
204.041	271.950	716.607
204.041	271.950	716.635
204.041	271.950	722.695
204.041	271.950	722.997
204.044	271.910	711.655
204.044	271.910	711.656
204.044	271.910	716.635
204.044	271.910	722.695

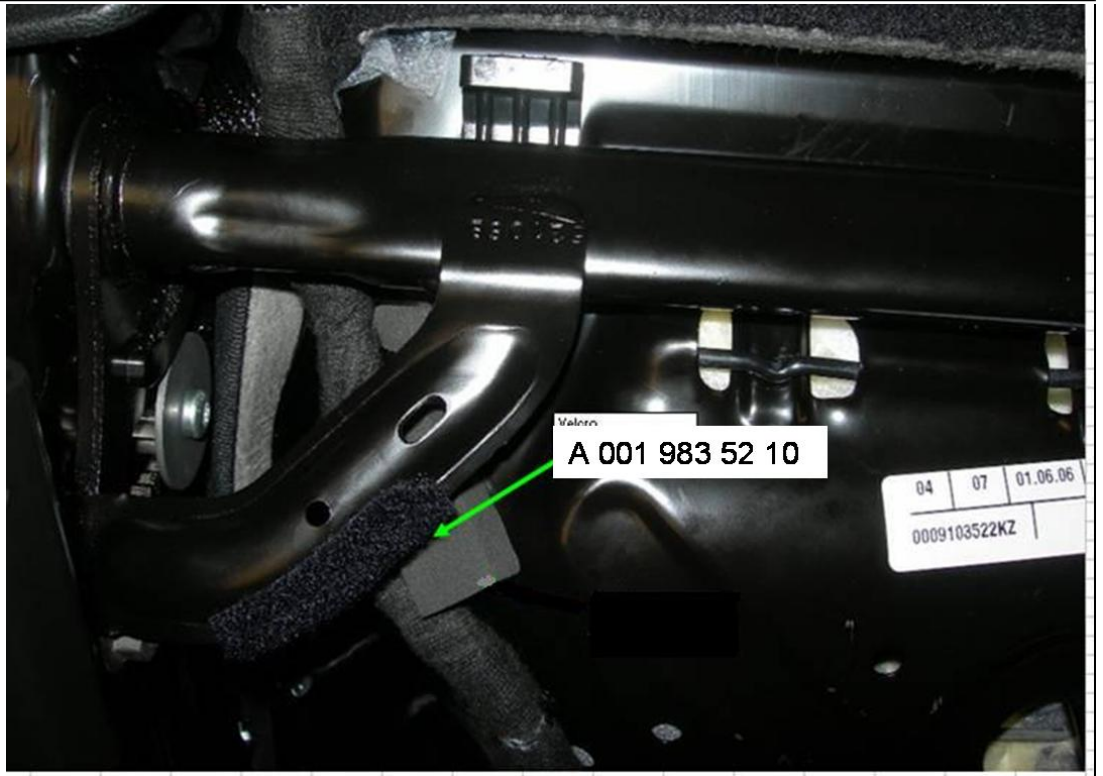
204.045	271.910	711.655
204.045	271.910	716.607
204.045	271.910	722.695
204.046	271.952	711.656
204.046	271.952	716.607
204.046	271.952	716.635
204.046	271.952	722.695
204.046	271.952	722.997
204.047	271.860	722.618
204.047	271.860	722.997
204.052	272.921	711.656
204.052	272.921	716.636
204.052	272.921	722.998
204.054	272.947	711.654
204.054	272.947	716.671
204.054	272.947	722.999
204.056	272.961	722.906
204.065	272.982	722.906
204.065	272.984	722.906
204.081	272.948	722.964
204.085	272.911	722.963
204.087	272.971	722.960
204.089	642.961	722.962
204.202	651.911	711.653
204.202	651.911	716.656
204.202	651.911	722.646
204.202	651.911	722.908
204.203	651.911	711.670
204.203	651.911	722.646
204.203	651.911	722.908
204.207	646.811	711.655
204.207	646.811	716.608
204.207	646.811	716.655
204.207	646.811	716.657
204.207	646.811	722.699
204.208	646.811	716.657
204.208	646.811	722.640
204.222	642.960	711.670
204.222	642.960	722.902
204.241	271.950	711.656
204.241	271.950	716.607
204.241	271.950	716.635
204.241	271.950	722.695

204.241	271.950	722.997
204.245	271.910	711.655
204.245	271.910	716.607
204.245	271.910	722.695
204.246	271.952	711.656
204.246	271.952	716.607
204.246	271.952	716.635
204.246	271.952	722.695
204.246	271.952	722.997
204.247	271.860	722.618
204.247	271.860	722.997
204.252	272.921	711.656
204.252	272.921	716.636
204.252	272.921	722.998
204.254	272.947	711.654
204.254	272.947	716.671
204.254	272.947	722.999
204.256	272.961	722.906
204.289	642.961	722.962
221.022	642.930	722.902
221.028	629.911	722.903
221.054	272.946	722.999
221.056	272.965	722.906
221.070	273.922	722.904
221.071	273.961	722.904
221.077	156.984	722.907
221.077	156.984	722.930
221.080	642.932	722.962
221.084	273.924	722.961
221.086	273.968	722.961
221.087	272.975	722.960
221.095	272.974	722.950
221.122	642.930	722.902
221.128	629.911	722.903
221.154	272.946	722.999
221.156	272.965	722.906
221.170	273.922	722.904
221.171	273.961	722.904
221.176	275.953	722.649
221.177	156.984	722.907
221.177	156.984	722.930
221.179	275.982	722.649
221.180	642.932	722.962

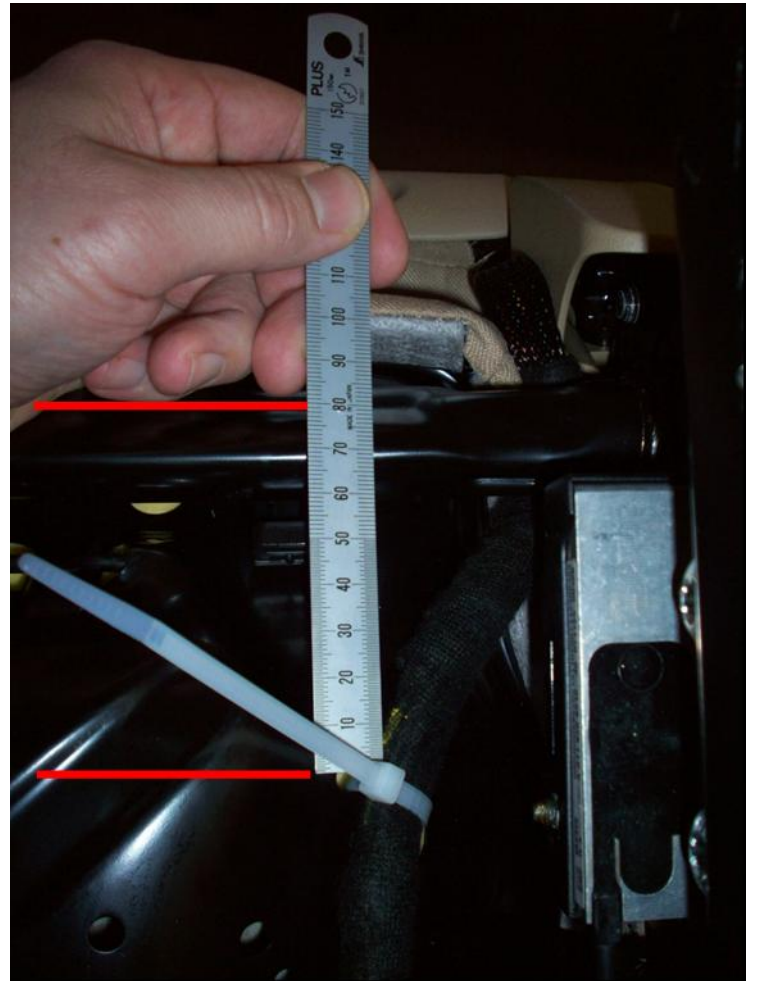
221.184	273.924	722.961
221.186	273.968	722.961
221.187	272.975	722.960
221.195	272.974	722.950

Attachments

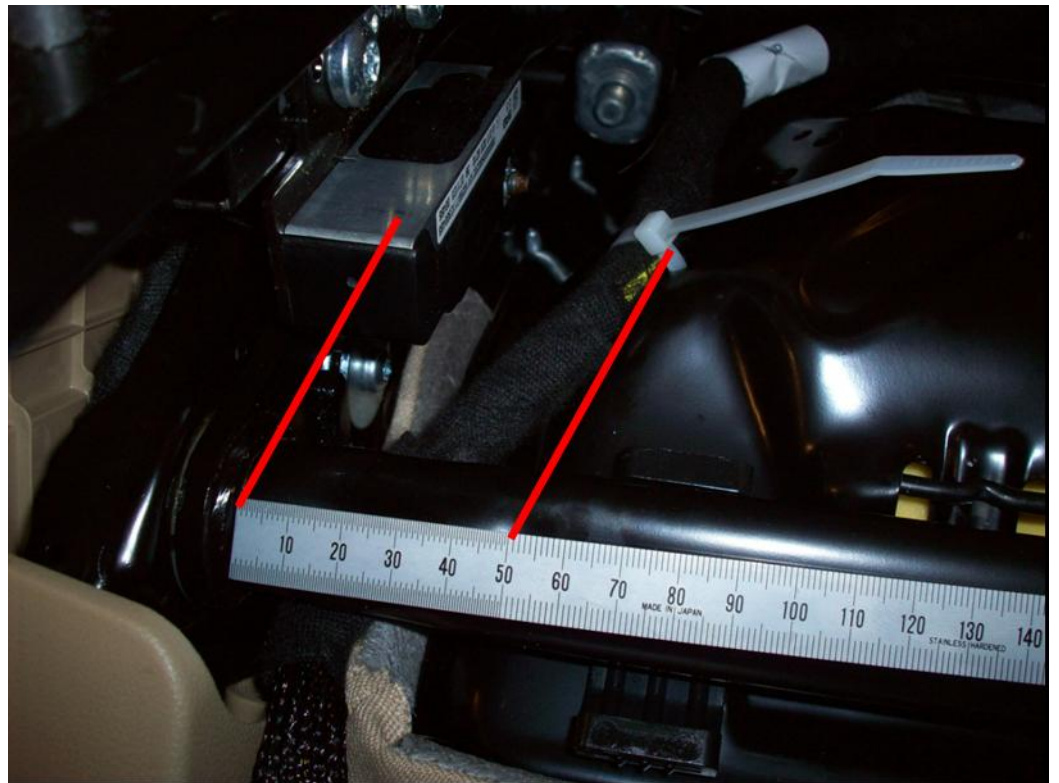
PIC 6.jpg:



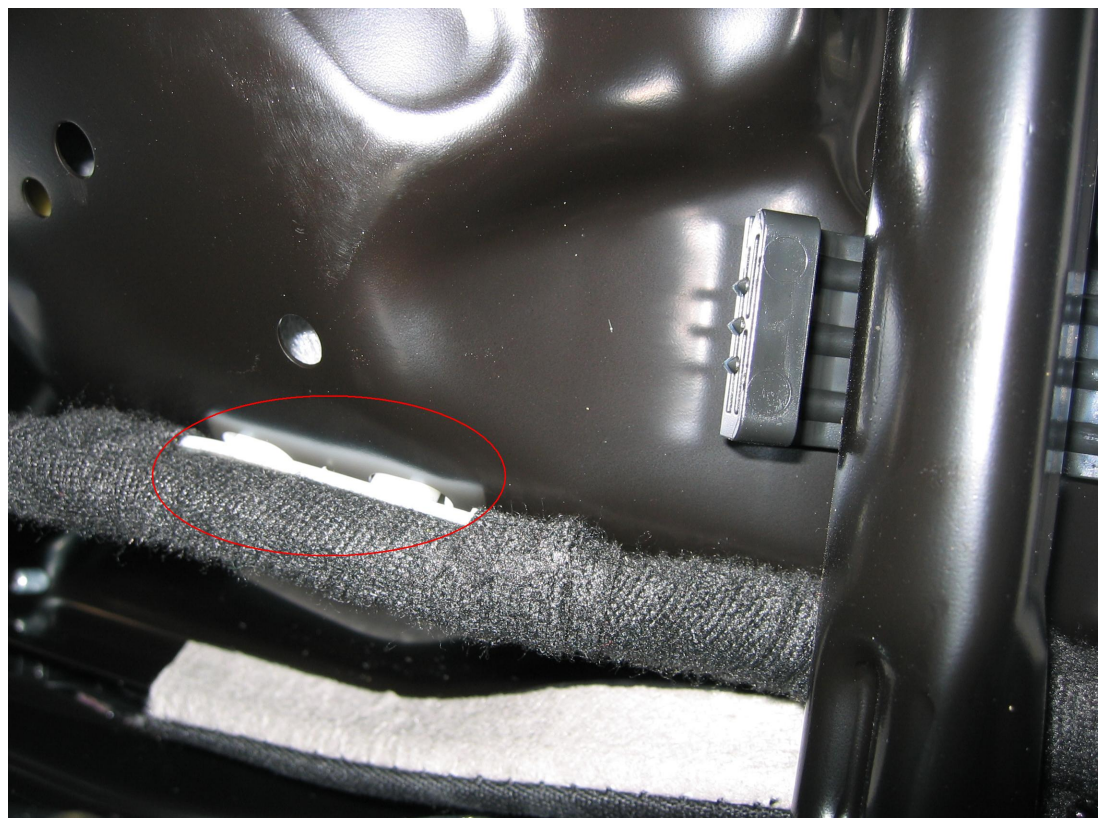
PIC 7.jpg:



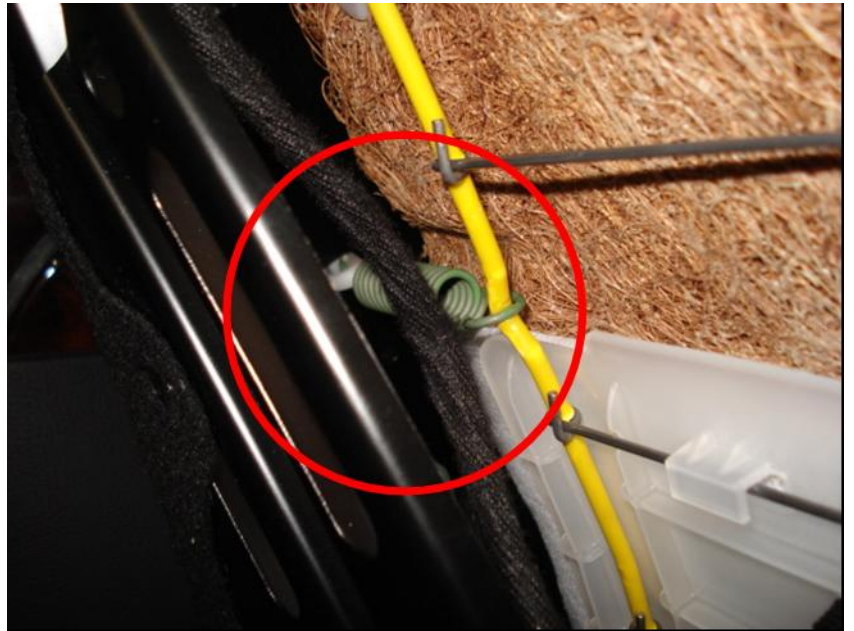
PIC 8.jpg:



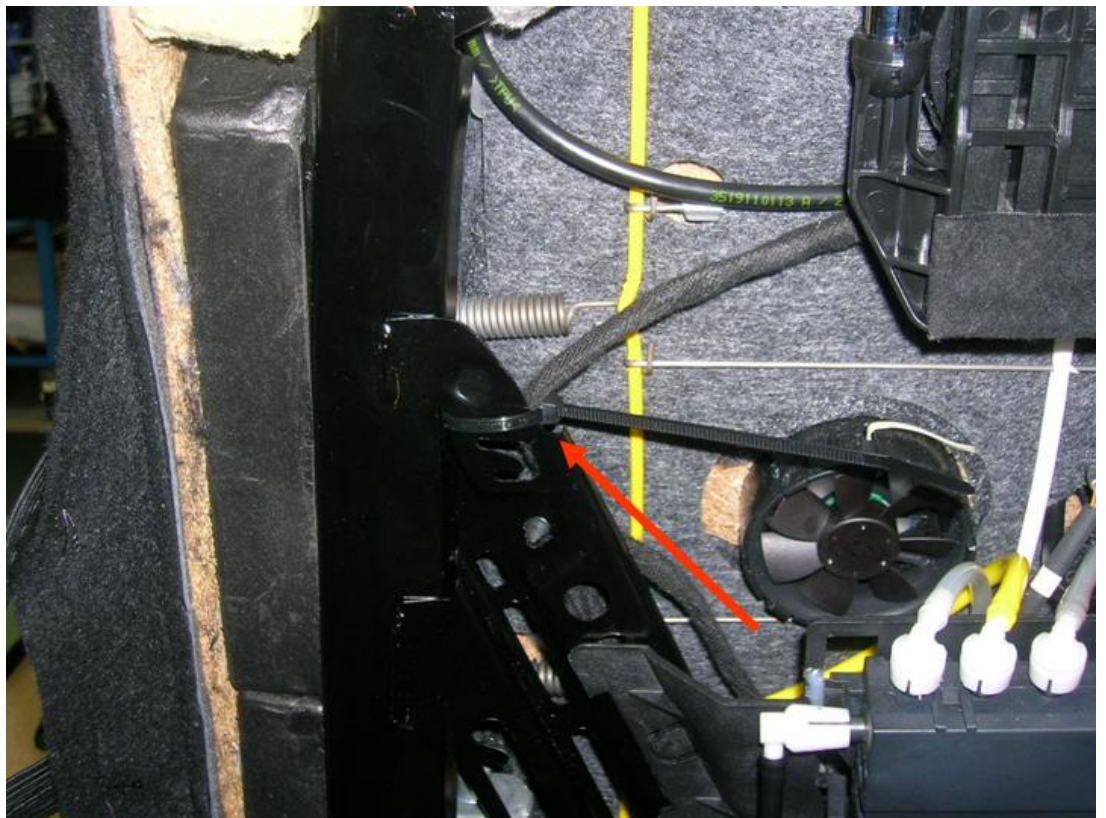
PIC 9.jpg:



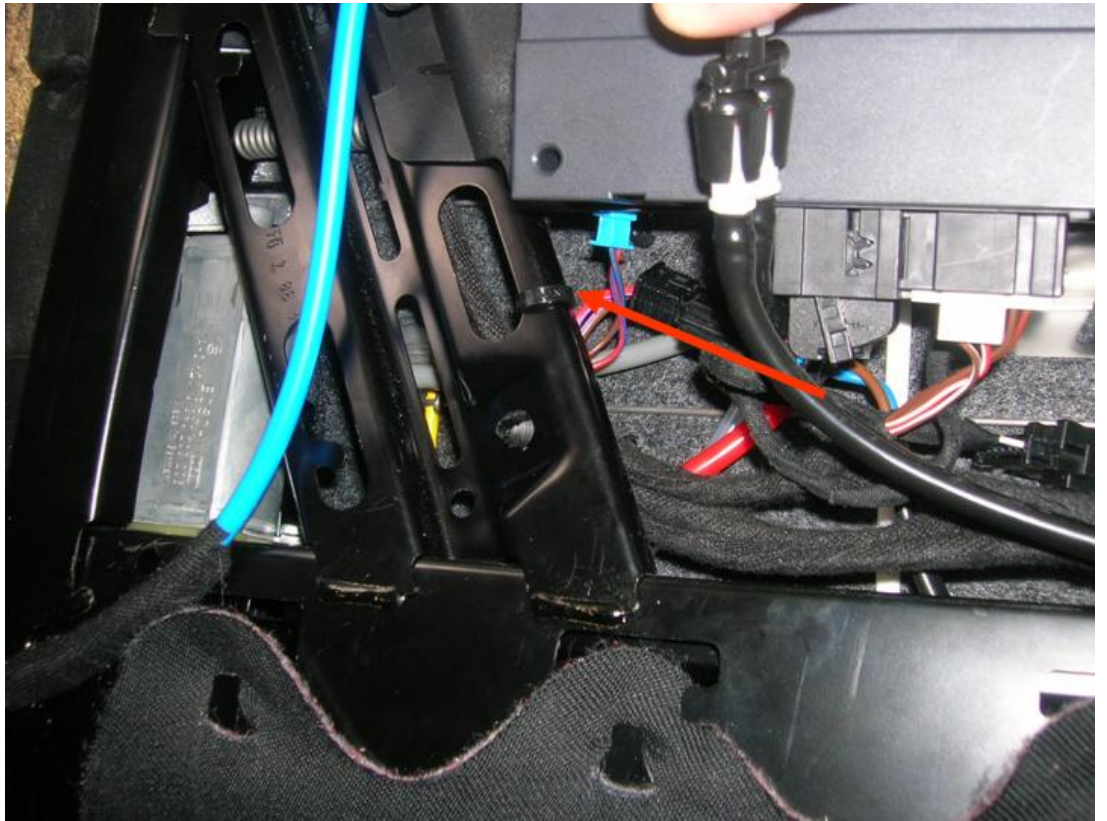
PIC 10.jpg:



PIC 11.jpg:



PIC 12.jpg:



PIC15.jpg:



PIC13.jpg:

