

Insufficient heat output or cooling output at frond of the vehicle

Topic number	LI83.00-N-059058
Version	1
Design group	83.00 General
Date	05-19-2014
Validity	MODEL 906.1### as of N563913 with CODE XM0 (Face-lift), without CODE IF4 (Chassis with crewcab) MODEL 906.6### as of S817695 with CODE XM0 (Face-lift), with CODE D50 (Full-width partition wall) MODEL 906.6### as of S817695 with CODE XM0 (Face-lift), with CODE D51 (Full-width partition wall with 1 window) MODEL 906.6### as of S817695 with CODE XM0 (Face-lift), with CODE D52 (Full-width partition wall with 1 sliding window) MODEL 906.6### as of S817695 with CODE XM0 (Face-lift), with CODE D64 (Partition wall with sliding door)
Reason for change	Country distribution expanded
Reason for block	

Complaint:

Insufficient heat output or cooling output at frond of the vehicle.

Cause:

The hood (1) of the air ducting (2) can become loose. This allows the warm or cold air to escape behind the instrument panel (see Figure 01).

Remedy:

Glue in the hoods (1) of the air ducting (2) with two-component adhesive (3) (see Figure 01).

Note:

- Remove trim (6). To do this, use a long wedge (115 589 03 59 00) to carefully unclip the trim (6) starting at the top (see Figure 02).
- Remove bezel (7) of air vent in center section of instrument panel (see AR68.10-D-1585A) (see Figure 02).
- Unclip stowage compartment (4) from center section of instrument panel (see Figure 02).
- Remove stowage compartment (5) from center section of instrument panel (two version, with/without CODE FJ1 (Flip cover with stowage compartment)) (see Figure 02).
- Glue in hoods (1) using two-component adhesive (3) order no. A000 989 99 71 (see Figure 01).

Attachments	
File	Description
01.jpg	Instrument panel center section
02.jpg	Instrument panel center section

Symptoms

Body / Air conditioning / Heater / Insufficient heat output

Body / Air conditioning / Air conditioning / Insufficient cooling output

Parts

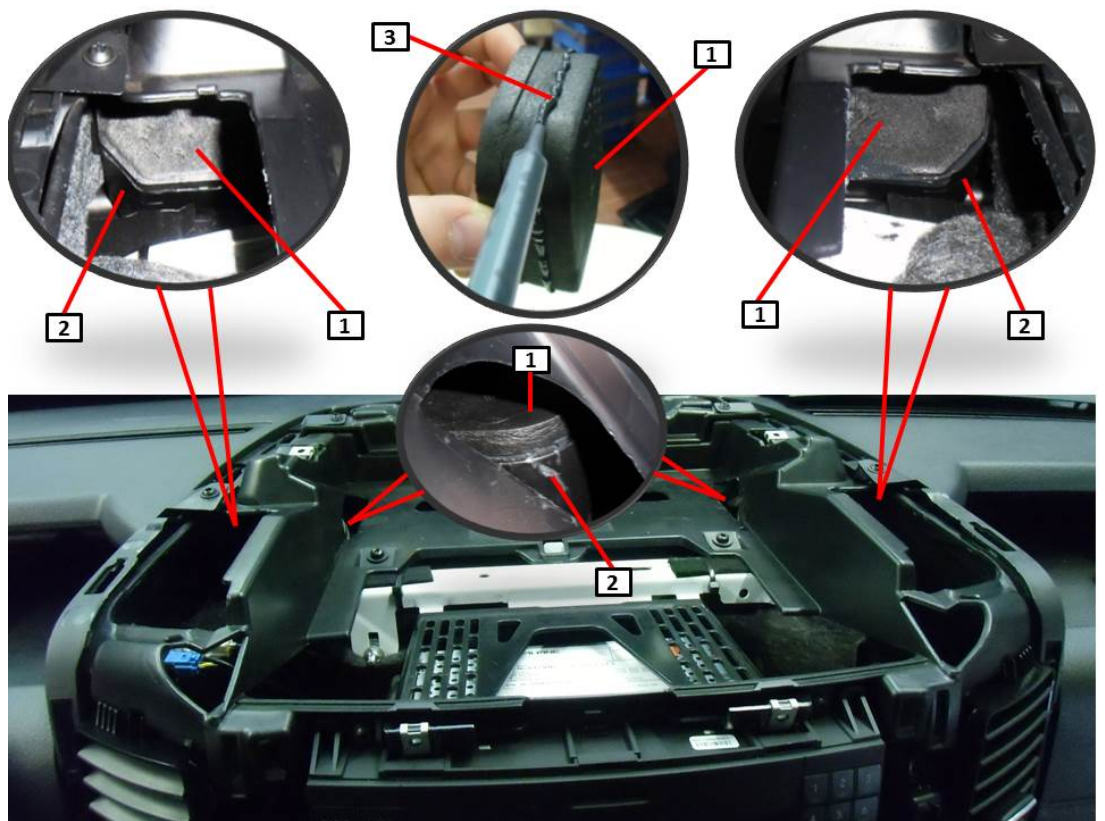
Part number	ES1	ES2	Designation	Quantity	Note	EPC	Other make part
A 006 989 99 71			Adhesive	1	Can be used for several vehicles.	X	

Validity

Vehicle	Engine	Transmission
906.111	*	*
906.113	*	*
906.131	*	*
906.132	*	*
906.133	*	*
906.134	*	*
906.135	*	*
906.136	*	*
906.153	*	*
906.155	*	*
906.611	*	*
906.613	*	*
906.631	*	*
906.633	*	*
906.635	*	*
906.637	*	*
906.653	*	*
906.655	*	*
906.657	*	*

Attachments

01.jpg:



02.jpg:

