	GROUP FUE	MODEL 2014-2018MY Soul (PS) 2012-2017MY Rio (UB) 2014-2017MY Forte (YD, YDm)
	NUMBER 038	DATE April 2018

TECHNICAL SERVICE BULLETIN

SUBJECT: CANISTER CLOSE VALVE INSPECTION AND AIR DRAIN CASE REPLACEMENT

This bulletin provides the procedure to inspect and if necessary, replace the Air Drain Case on some 2014-18MY Soul (PS), produced from July 21, 2013 through June 1, 2017, some 2012-2017MY Rio (UB), produced from June 21, 2011 through March 31, 2017, some 2014-2017MY Forte (YD) vehicles, produced from February 18, 2013 through March 2, 2017, and some 2017MY Forte (YDm) vehicles, produced from May 16, 2016 through March 6, 2017, which may experience an early shut-off during fuel refill and/or a malfunction indicator lamp (MIL) illumination with DTC(s) P0449 or P0451. Follow the procedure outlined in this bulletin to inspect and if necessary, replace the Air Drain Case.



Air Drain Case
(YD & YDm)



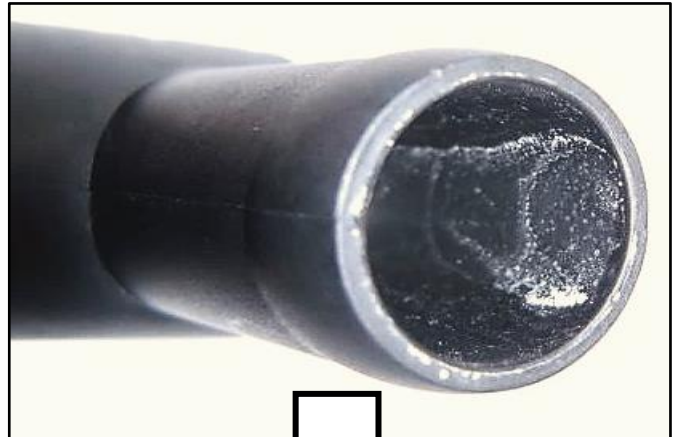
Air Drain Case
(PS & UB)

File Under: <Fuel>

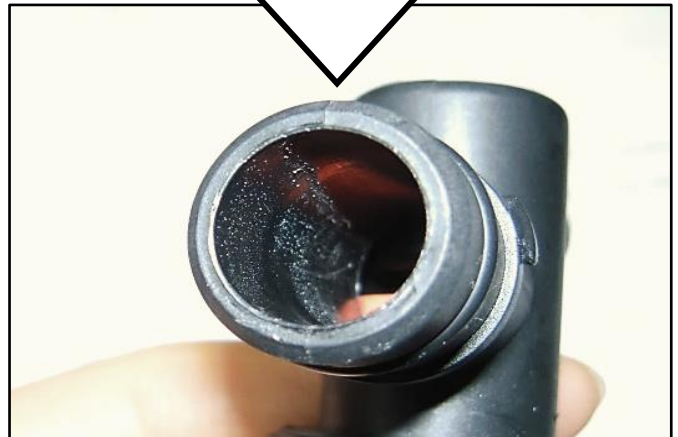
-
- Circulate To:** General Manager Service Manager Parts Manager
 Service Advisors Technicians Body Shop Manager Fleet Repair

Canister Close Valve (CCV) Inspection Procedure:

1. Remove the Canister Close Valve (CCV) by referring to the “Engine Control / Fuel System → Engine Control System → Canister Close Valve (CCV) → Repair procedures” chapter in the applicable shop manual.
2. Check both of the Canister Close Valve (CCV) port ends for signs of water contamination.



- 3a. If there is no sign of water contamination, re-assemble the CCV in the reverse order of removal. Follow the DTC troubleshooting information found on KGIS and submit any additional repair as a normal warranty claim.



- 3b. If there are signs of water contamination, re-assemble the CCV in the reverse order of removal and proceed below to page 3 of this bulletin to replace the Air Drain Case.

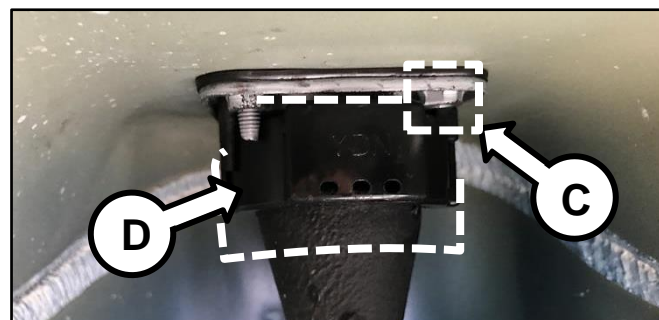
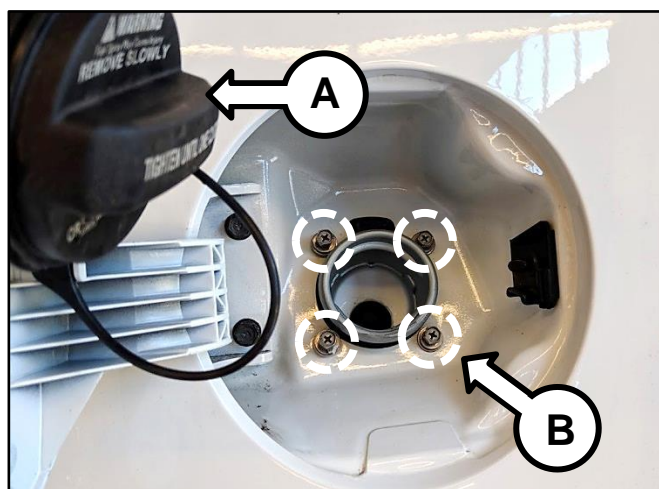
SUBJECT:

CCV INSPECTION AND AIR DRAIN CASE REPLACEMENT

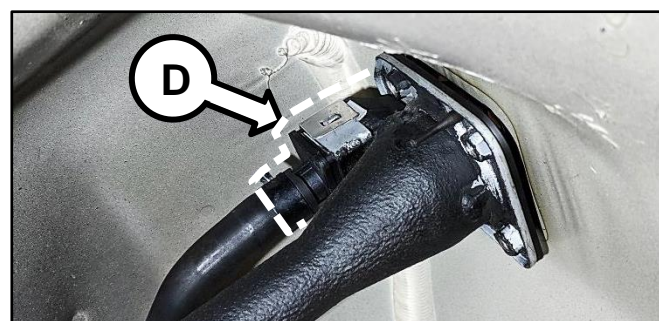
Air Drain Case Replacement Procedure:

- 1a. **Rio (UB):** Remove the left passenger side rear wheel guard by referring to the “Body (Interior and Exterior) → Exterior → Body Side Molding → Repair procedures – scroll down to Rear Wheel Guard Replacement” chapter in the applicable shop manual.
- 1b. **Soul (PS), Forte (YD) and (YDm):** Remove the left passenger side rear wheel guard by referring to the “Body (Interior and Exterior) → Body Side Molding → Rear Wheel Guard → Repair procedures” chapter in the applicable shop manual.
2. Remove the gas cap (A) and loosen the four (4) filler neck retaining bolts (B) enough, as shown (C), to allow removal of Air Drain Case (D).

Tightening torque for bolts (B):
 69.03 – 104.43 lb.in (7.8 – 11.8 N.m,
 0.8 – 1.2 kgf.m).



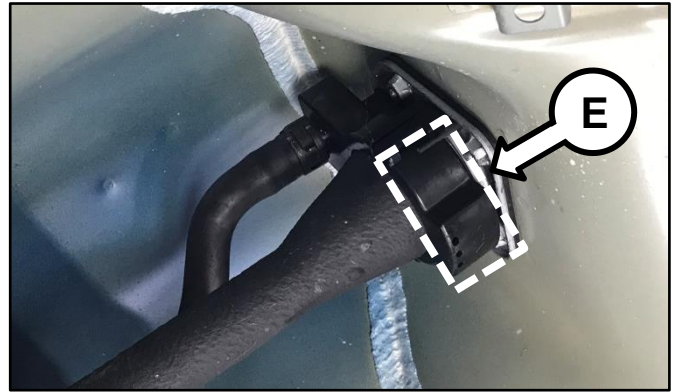
Forte (YD) and (YDm)



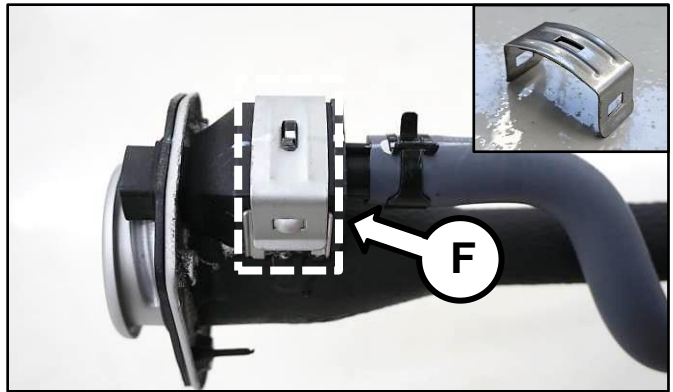
Soul (PS) and Rio (UB)

SUBJECT: **CCV INSPECTION AND AIR DRAIN CASE REPLACEMENT**

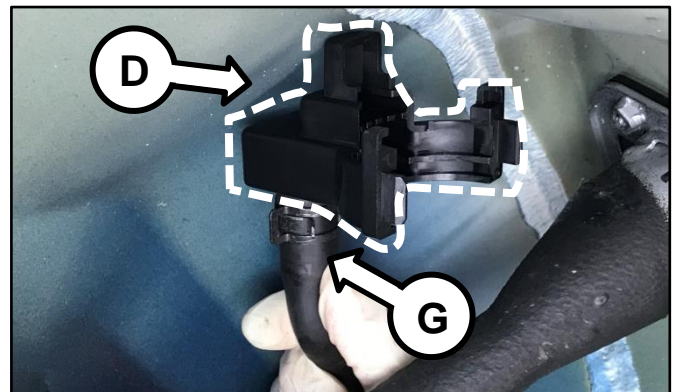
3a. **Forte (YD) and (YDm):** Remove the outer lower half of the filler neck Air Drain Case (E).



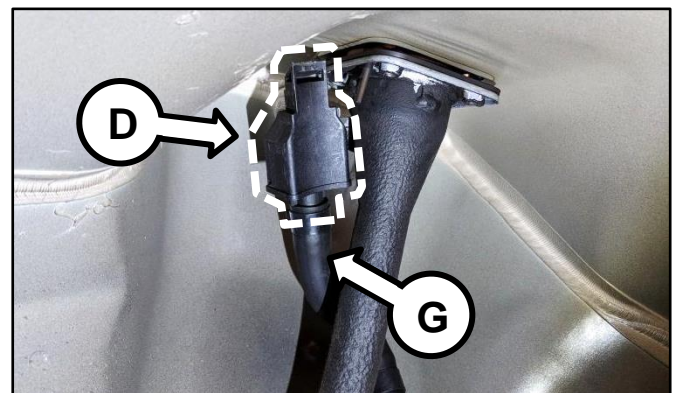
3b. **Soul (PS) and Rio (UB):** Remove the upper Air Drain Case retaining clip (F).



4. Remove the inner half of the Air Drain Case (D) and disconnect the Canister Close Valve (CCV) airflow inlet hose (G).



Forte (YD) and (YDm)



Soul (PS) and Rio (UB)

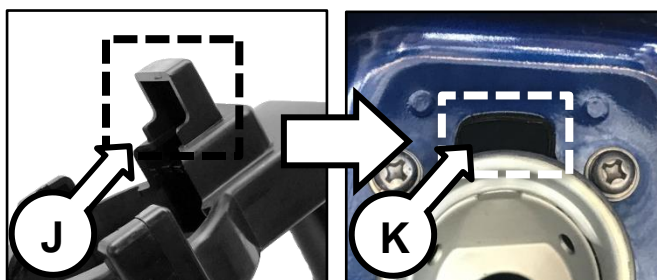
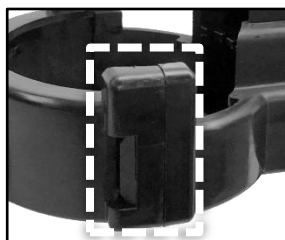
SUBJECT:

CCV INSPECTION AND AIR DRAIN CASE REPLACEMENT

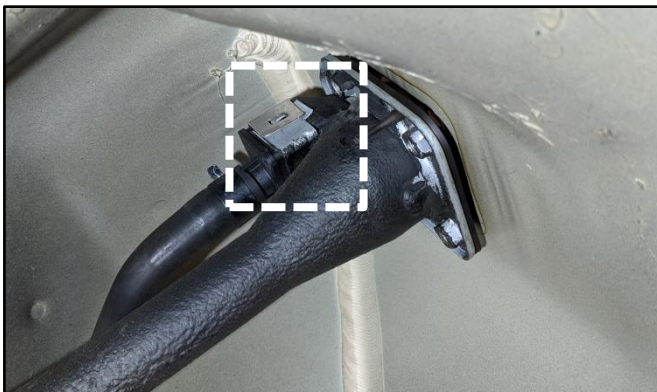
- 5a. **Forte (YD) and (YDm):** Install the new improved fuel filler neck air drain case in the reverse order of removal. Ensure the vent of the Air Drain Case (J) is inserted properly through the opening (K) and ensure a click is heard when installing the new air drain case assembly.

★ NOTICE

Ensure the outer air drain case half is installed in the correct orientation with the contacts aligned and not upside down.

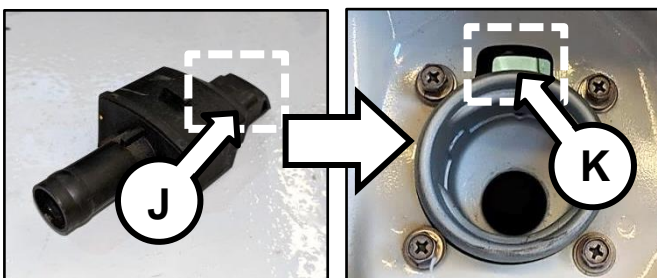


- 5b. **Soul (PS) and Rio (UB):** Install the new improved fuel filler neck Air Drain Case in the same reverse order of removal. Ensure the vent of the Air Drain Case (J) is inserted properly through the opening (K) and ensure a click is heard when installing the retaining bracket.



6. Tighten the four (4) fuel neck filler retaining bolts (B) to specifications from step 2.

Tightening torque for bolts (B):
 69.03 – 104.43 lb.in (7.8 – 11.8 N.m,
 0.8 – 1.2 kgf.m).



7. Reinstall all removed components in the reverse order of removal and torque the wheel lug nuts to specifications.

Tightening torque for wheel lug nuts:
 79.6 lb.ft (108.25 N.m, 10.98 kgf.m)



SUBJECT:

CCV INSPECTION AND AIR DRAIN CASE REPLACEMENT

AFFECTED VEHICLE RANGE:

Model	Production Date Range
Soul (PS)	July 21, 2013 to June 1, 2017
Rio (UB)	June 21, 2011 to March 31, 2017
Forte (YD)	February 18, 2013 to March 2, 2017
Forte (YDm)	May 16, 2016 to March 6, 2017

REQUIRED PART:

Part Name	Part Number	Figure
Air Drain Case (PS) (UB)	31035 B2500FFF	
Air Drain Case (YD) (YDm)	31035 A7510FFF	

WARRANTY INFORMATION:

N Code: I3A C Code: ZZ4

Model	Claim Type	Causal P/N	Qty.	Repair Description	Labor Op Code	Op Time
PS, YD, YDm	W	31430 1Y000	0	Canister Close Valve (CCV) Inspection	31035F01	0.3 M/H
UB		31453 3K600			31035F01	0.4 M/H
PS, UB		31035 B2500FFF	1	Canister Close Valve (CCV) Inspection and Air Drain Case Replacement	31035F02	0.6 M/H
YD, YDm		31035 A7510FFF	1			