



Technical Service Bulletin

Technical Service Bulletin: TSB170079	Released Date: 02-Apr-2018
Incorrect Aftertreatment Part Number Etching	

Incorrect Aftertreatment Part Number Etching

Warranty Statement

The information in this document has no effect on present warranty coverage or repair practices, nor does it authorize TRP or Campaign actions.

Contents

Product Affected

Engine:

- B6.7 CM2350 B121B
- L9 CM 2350 L116B
- X15 CM2350 X114B

Chassis Make:

- Freightliner®
- International®
- Kenworth®
- Peterbilt®

Issue

Incorrect part numbers etched on aftertreatment components.

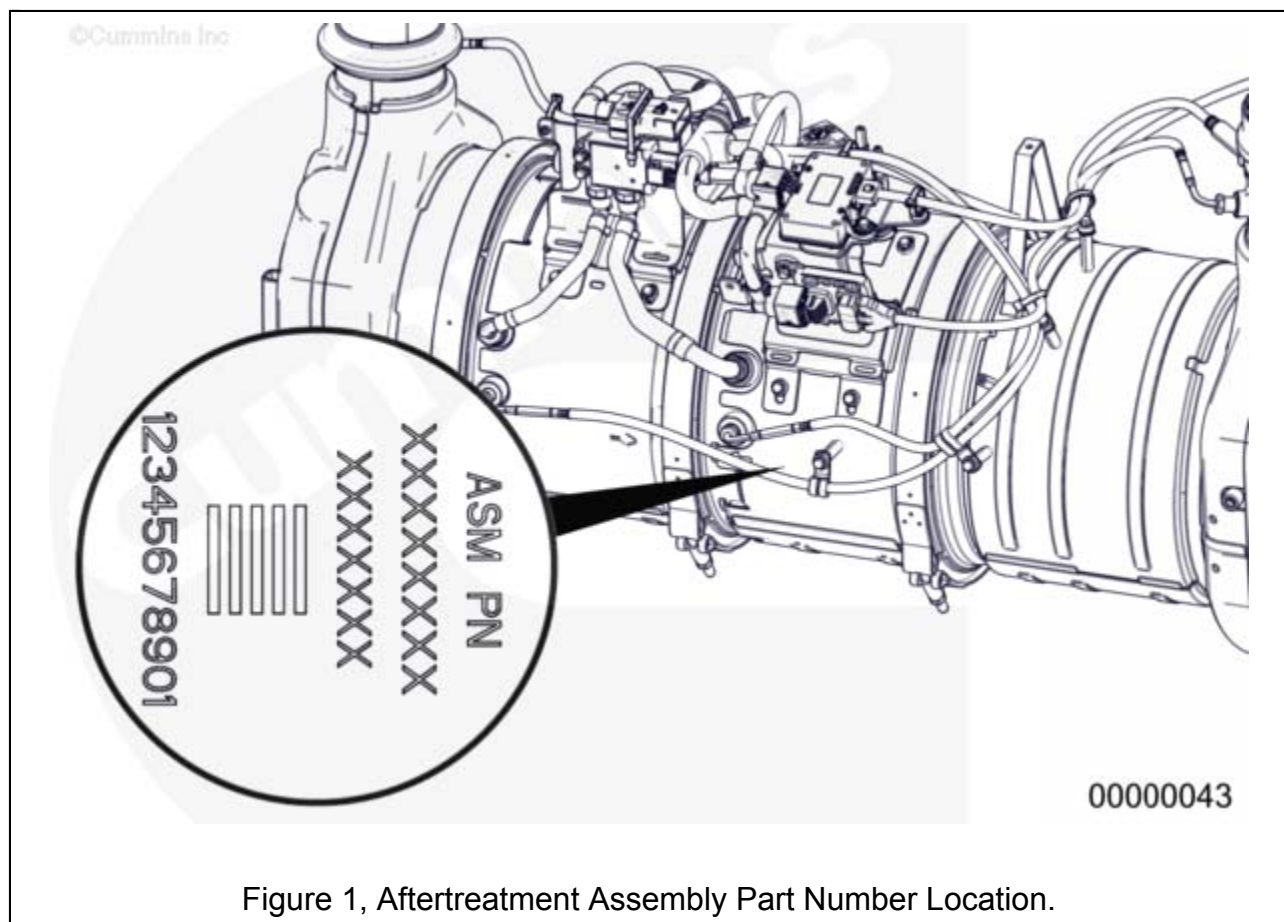
Resolution

- Before ordering an aftertreatment diesel particulate filter (DPF), aftertreatment decomposition tube (DRT), aftertreatment diesel oxidation catalyst (DOC), or aftertreatment selective catalytic reduction (SCR) catalyst, verify aftertreatment component part numbers are correct for the specific aftertreatment system. Use Tables 1, 2, 3, and 4 below to verify part numbers.

- See Technical Service Bulletin, Adhesive Aftertreatment Main Body Gasket, TSB170070 for correct gasket part numbers.

Part Identification

- Figure 1 below displays location of entire assembly part number, which can guide in further identification of needed individual parts.
- Figure 2 below displays location of E PN and C PN on aftertreatment DOC.
- More information about part number identification and location can be found in the corresponding service manual.
 - See B6.7 CM2350 B121B Service Manual, Bulletin 5411223. Refer to Procedure 100-001 (</qs3/pubsys2/xml/en/procedures/455/455-100-001.html>) in Section E.
 - See L9 CM2350 L116B Service Manual, Bulletin 5411330. Refer to Procedure 100-001 (</qs3/pubsys2/xml/en/procedures/459/459-100-001.html>) in Section E.
 - See X15 CM2350 X114B Service Manual, Bulletin 5411181. Refer to Procedure 100-001 (</qs3/pubsys2/xml/en/procedures/377/377-100-001.html>) in Section E.



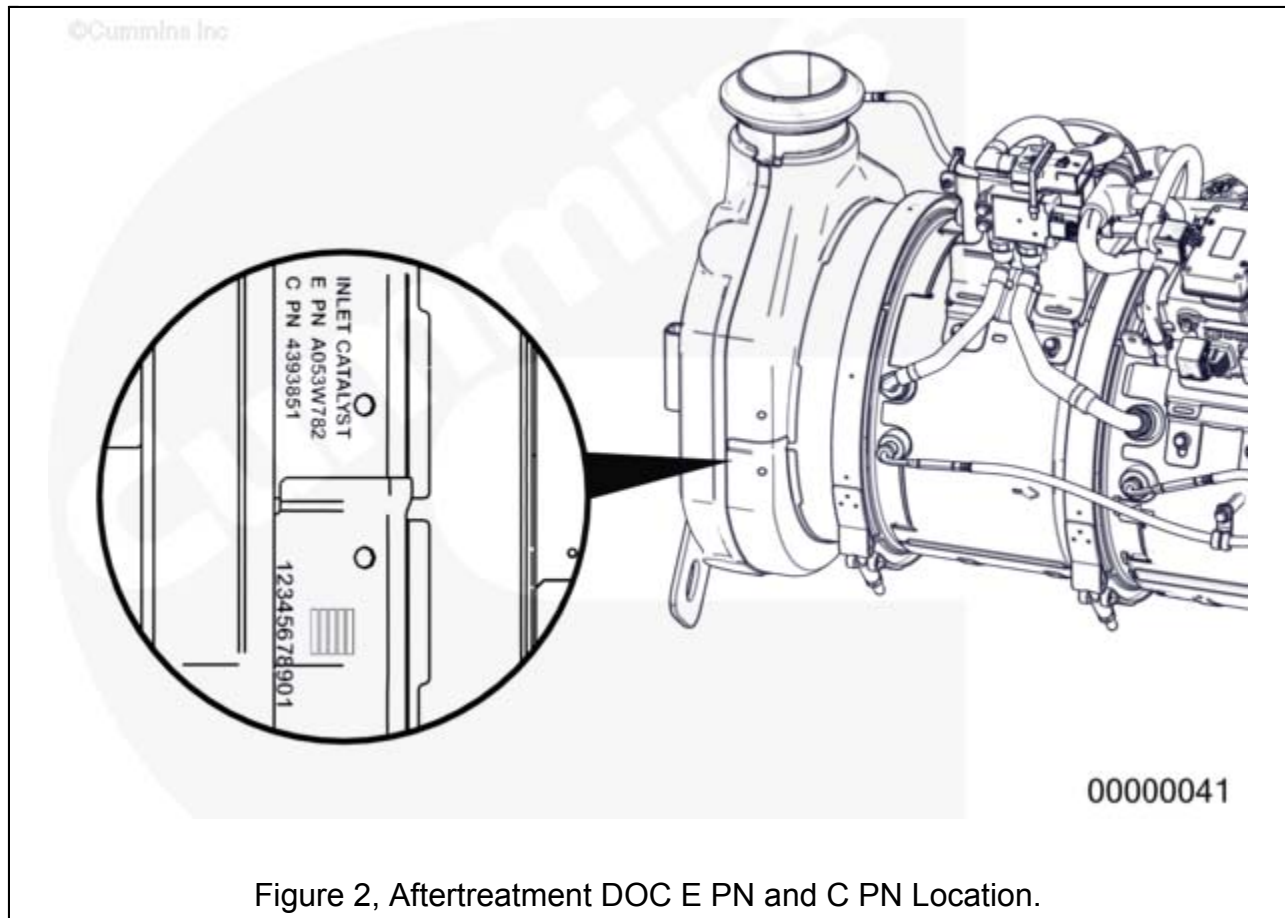


Figure 2, Aftertreatment DOC E PN and C PN Location.

Table 1, X15 CM2350 X114B: International®

Aftertreatment Assembly Part Numbers		Affected Module	Affected Aftertreatment Module Part Numbers				Clamp Part Number	Comments
E PN	C PN	Type	Incorrect EPN	Correct EPN	Incorrect CPN	Correct CPN		

Table 1, X15 CM2350 X114B: International®							
A054U 783	43943 93	DPF	A055B 965	A055B 953	43945 80	43945 77	
A054U 783	43943 93	DRT	A054Z 388	A054Z 389	43946 55	43946 54	53048 49
							43946 55 is a DRT for a B6.7 engine ; diamet er is 11.5 in. 43946 54 is a DRT for an X15 engine ; diamet er is 14 in. 43946 54 must be ordere d instea d of 43946 55.

Table 1, X15 CM2350 X114B: International®								
A054U 783	43943 93	SCR	A055V 244	A055K 050	43950 12	43947 37	53048 49	43950 12 is a SCR for a B6.7 engine ; diamet er is 11.5 in. 43947 37 is a SCR for an X15 engine ; diamet er is 14 in. 43947 37 must be ordere d instea d of 43950 12.

Table 1, X15 CM2350 X114B: International®								
A054U 781	43947 17	DOC	A055J 297	A055N 645	43947 56	43948 55	53048 49	43947 56 is a DOC for an X15 engine . . 43948 55 is also a DOC for an X15 engine . Both the same diamet er and size. The only differe nce is that 43947 56 has extra OEM bracke ts welde d to end flange of DOC. DOC

Table 1, X15 CM2350 X114B: International®								
								may or may not fit depen ding on OEM truck config uration .

Table 1, X15 CM2350 X114B: International®								
A054U 781	43947 17	SCR	A055V 244	A058P 548	43950 12	54181 10	53048 49	43950 12 is a SCR for a B6.7 engine ; diamet er is 11.5 in. 54181 10 is an SCR for an X15 engine ; diamet er is 14 in. 54181 10 must be ordere d in place of 43950 12

Table 2, L9 CM2350 L116B: Kenworth™ and Peterbilt™

Table 2, L9 CM2350 L116B: Kenworth™ and Peterbilt™								
Aftertreatment Assembly Part Numbers		Affected Module	Affected Aftertreatment Module Part Numbers				Clamp Part Number	Comments
E PN	C PN	Type	Incorrect EPN	Correct EPN	Incorrect CPN	Correct CPN		
A052V104	4394889	DOC	A055B958	A055B956	-	4394578	5272750	4394578 was etched on DOC correctly. EPN was etched incorrectly. Low risk because part ordering is done using CPN and not EPN.

Table 3, L9 CM2350 L116B: Freightliner®

Table 3, L9 CM2350 L116B: Freightliner®								
Aftertreatment Assembly Part Numbers		Affected Module	Affected Aftertreatment Module Part Numbers				Clamp Part Number	Comments
E PN	C PN	Type	Incorrect EPN	Correct EPN	Incorrect CPN	Correct CPN		

Table 3, L9 CM2350 L116B: Freightliner®						
A054 M325	43949 23	DPF	A055B 965	A055B 956	43945 80	43945 78

Table 4, B6.7 CM2350 B121B: International®								
Aftertreatment Assembly Part Numbers		Affected Module	Affected Aftertreatment Module Part Numbers				Clamp Part Number	Comments
E PN	C PN	Type	Incorrect EPN	Correct EPN	Incorrect CPN	Correct CPN		
A054U 213	43943 66	SCR	A055H 540	A055H 450	-	43946 97	52727 50	43946 97 was etched on SCR correctly. EPN was etched incorrectly. Low risk because part ordering is done using CPN and not EPN.

Document History

Date	Details
2017-6-19	Module Created
2017-8-28	Added Part Identification section. Updated Tables 1, 2, 3, and 4 with clamp part number. Added Figure 1 and Figure 2.
2018-3-29	Added SCR rows to A054U783 and A054U781

Last Modified: 02-Apr-2018
