



Service Bulletin

PRELIMINARY INFORMATION

Subject: Deformed or Dimpled Liftgate Center Applique, Liftgate Paint Damage Evident at Lower Outer Edge of Applique

Models: 2007-2013 Chevrolet Suburban, Tahoe
2007-2013 GMC Yukon Models, Yukon XL Models

This PI is being revised to add the 2012 and 2013 model years, update the Condition/Concerns, Recommendation/Instructions and change the washer part number in parts information. Please discard PI0657.

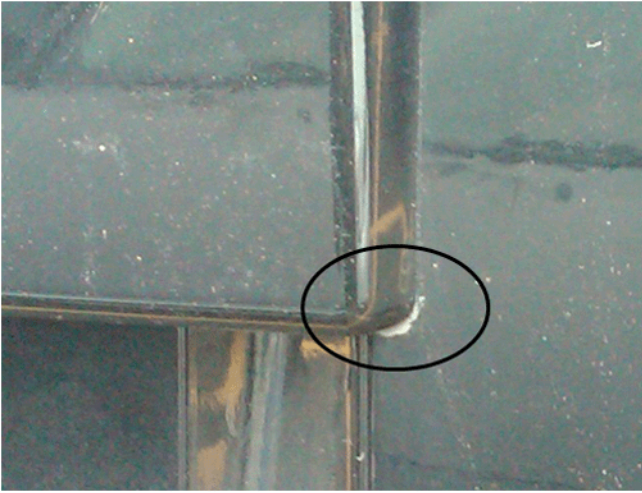
Condition/Concern #1



Some customers may comment on seeing a dimpling or deformation (shown circled above) near an outer edge of the liftgate center applique.

The design of the applique might allow deformation or dimpling of the applique surface if the retaining nuts are overtightened. In some cases, damage to the applique mounting bosses may be evident if the studs were overtightened.

Condition/Concern #2



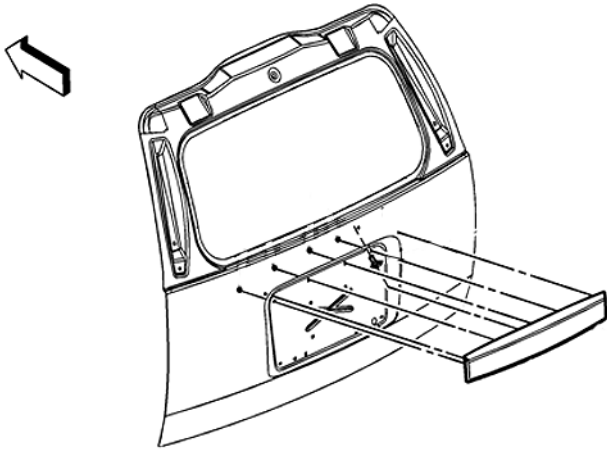
Some customers may comment on paint damage (shown circled above) on the liftgate at the lower outboard edges of the center applique.

The design of the applique in conjunction with the forming of the license plate pocket in the liftgate may allow the lower outboard edges of the applique to have contact with the liftgate.

Recommendation/Instructions

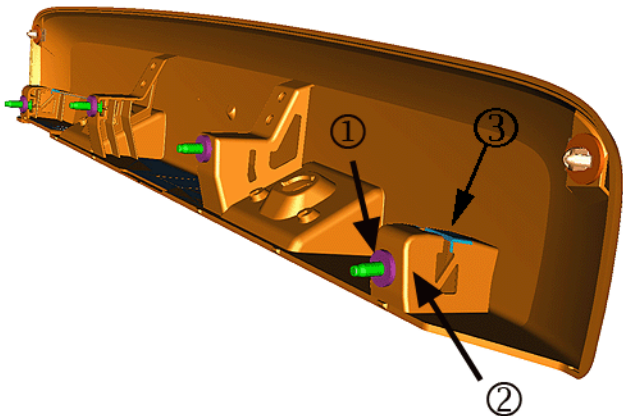
The liftgate center applique design has been revised to be more resistant to overtightening, provide enhanced anti-rotation measures for the mounting studs and also provide an improved interface to lessen contact with the liftgate.

Repair Instructions for Condition/Concern #1 or #2



Note: The updated applique design went into production for the 2012 model year. The applique should **Not** require replacement on a 2012 or newer vehicle, unless Condition 1 is present.

For 2011 or earlier vehicles, replace the liftgate center applique with the appropriate new service part listed in the table below. Refer to Liftgate Center Applique Replacement in SI.



Note: P/N 15911310 is a 0.25 mm thick Mylar washer. The recommended guideline is to use four washers at each of the applique mounting stud locations, positioned over the stud, behind the foam washer, to achieve an additional 1 mm of gap between the lower edge of the applique and liftgate.

Tip: To correct Condition 2, the updated design applique is necessary, identified by a split along the top of the outer mounting boss locations (3). The updated design applique is already present on 2012 and new vehicles.

Additional clearance will need to be created between the lower edge of the updated applique design (3) and the liftgate. Add GM washer P/N15911310 to the applique between the foam washer (1) and the mounting boss (2) at each of the four mounting stud locations. Stack the washers to obtain the needed amount of spacing along the lower edge of the applique to prevent contact to the liftgate, while providing a good appearance.

Parts Information

| Part Number | Description | Usage |
|-------------|-------------------------------------|--|
| 22777527 | APPLIQUE ASM-L/GATE CTR **NO COLOR" | Chevy Hybrid (&HP2) W/ Rr Vision Camera (&UVC) |
| 22777528 | APPLIQUE ASM-L/GATE CTR **NO COLOR" | Chevy Non-Hybrid W/ Rr Vision Camera (&UVC) |
| 22777529 | APPLIQUE ASM-L/GATE CTR **NO COLOR" | Chevy Non-Hybrid W/O Rr Vision Camera (-UVC) |
| 22777530 | APPLIQUE ASM-L/GATE CTR **NO COLOR" | GMC Non-Hybrid W/O Rr Vision Camera (-UVC) |
| 22777531 | APPLIQUE ASM-L/GATE CTR **NO COLOR" | GMC Non-Hybrid W/ Rr Vision Camera (&UVC) |
| 22777532 | APPLIQUE ASM-L/GATE CTR **NO COLOR" | GMC Hybrid (&HP2) W/ Rr Vision Camera (&UVC) |
| 15911310 | WASHER - FLAT | As needed for spacing |

Warranty Information

For vehicles repaired under warranty, use:

| Labor Operation | Description | Labor Time |
|-----------------|--------------------------------------|------------------------------------|
| B8823 | Liftgate Center Applique Replacement | Use Published Labor Operation Time |

GM bulletins are intended for use by professional technicians, NOT a "do-it-yourselfer". They are written to inform these technicians of conditions that may occur on some vehicles, or to provide information that could assist in the proper service of a vehicle. Properly trained technicians have the equipment, tools, safety instructions, and know-how to do a job properly and safely. If a condition is described, DO NOT assume that the bulletin applies to your vehicle, or that your vehicle will have that condition. See your GM dealer for information on whether your vehicle may benefit from the information.



WE SUPPORT VOLUNTARY TECHNICIAN CERTIFICATION