



Service Bulletin

TECHNICAL

Subject: Stop/Start System (RPO KL9) Inhibited with Malfunction Indicator Light (MIL) ON - DTC P16DC, P15FF, U01B0, U0284, U0285, U1345, U135A, U135E, U1501, U1510, U1511 Set

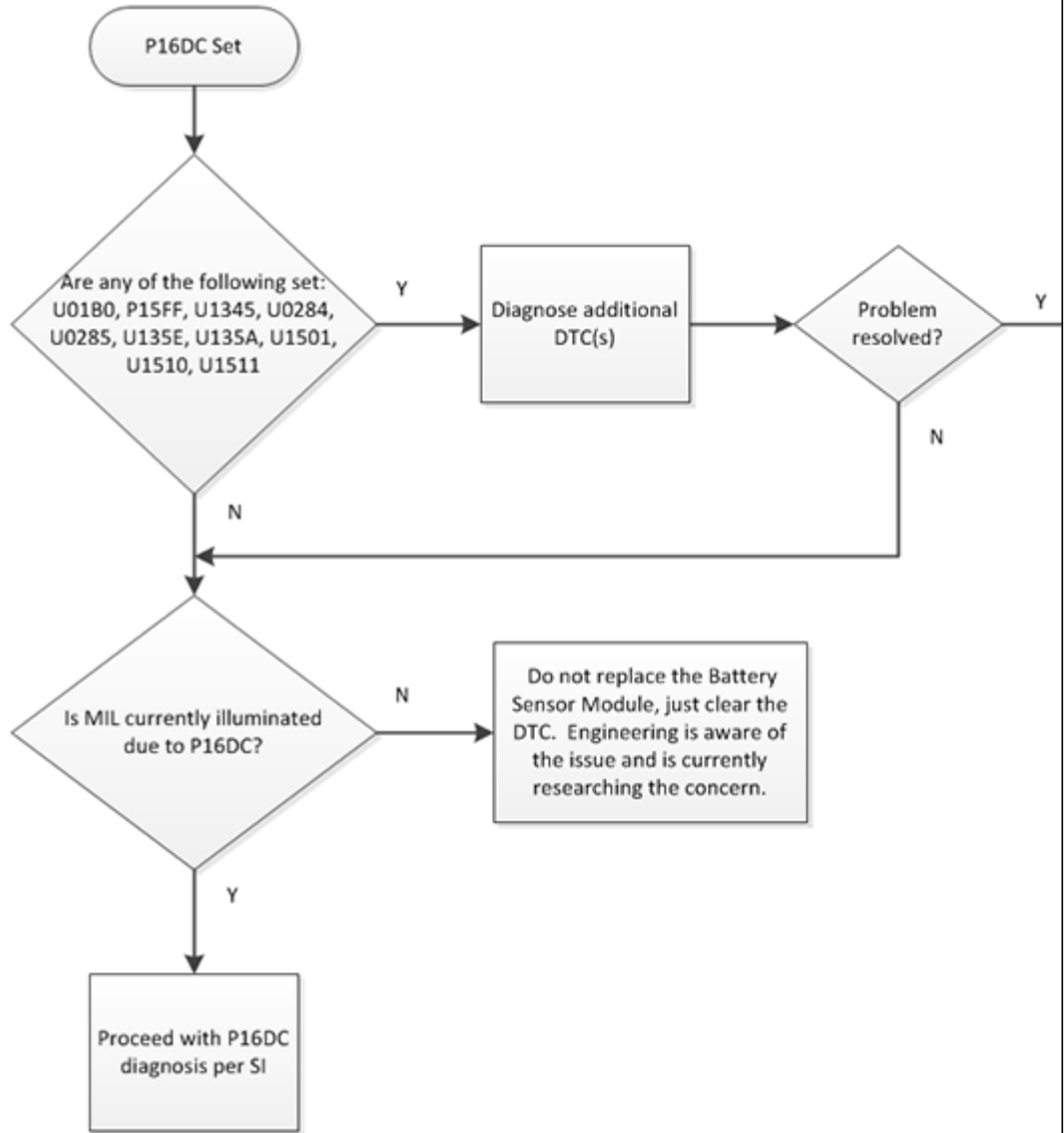
Attention: This Bulletin also applies to any of the listed models equipped with Stop/Start System that may be Export from North America vehicles.

Brand:	Model:	Model Year:		VIN:		Engine:	Transmission:
		from	to	from	to		
Buick	Encore	2016	2016			All	All
	Envision	2016	2018				
	LaCrosse	2017	2018				
Cadillac	ATS	2017	2017				
	CT6	2016	2018				
	CTS	2017	2017				
	XT5	2017	2018				
Chevrolet	Cruze	2016	2018				
	Equinox	2018	2018				
	Malibu	2017	2018				
GMC	Acadia	2017	2018				
	Terrain	2018	2018				

<p>Condition</p>	<p>Some customers may comment on any of the following conditions:</p> <ul style="list-style-type: none"> • Stop/Start system is inoperative. • Message “Stop/Start System Disabled” appears on the DIC. • Malfunction Indicator Lamp (MIL) being illuminated. <p>The technician may find DTC P16DC set.</p> <p>The technician may also find one or more of the following DTCs set:</p> <ul style="list-style-type: none"> • P15FF • U01B0 • U0284 • U0285 • U1345 • U135A • U135E • U1501 • U1510 • U1511
<p>Cause</p>	<p>DTC P16DC disables the Stop/Start System.</p>

Correction

Note: Do Not replace the Battery Sensor Module (IBS) until performing the diagnostic procedures for the codes that have been set.



Customer Information

The vehicle is perfectly safe to operate. The only consequence of P16DC is the disablement of Stop/Start feature. Clearing the DTC shall enable stop/start after the vehicle has performed “Battery Sensor Module Learn.” DTCs may reset during normal operation. In that case, return the vehicle the dealer for service or to clear codes.

Warranty Information

For vehicles repaired under the Bumper-to-Bumper coverage (Canada Base Warranty coverage), use the following labor operation. Reference the Applicable Warranties section of Investigate Vehicle History (IVH) for coverage information.

Labor Operation	Description	Labor Time
4081098*	Diagnose Inoperative Stop/Start System, Malfunction Indicator Lamp Illuminated (MIL) ON	0.3 hr

*This is a unique Labor Operation for Bulletin use only.

Version	6
Modified	<p>Feb. 29, 2016 - Added the 2016 Encore, CT6, Cruze, 2017 XT5 Models and removed an SI reference from Correction.</p> <p>March 16, 2016 - Removed the Malibu model.</p> <p>April 25, 2016 - Removed the Cadillac ATS/CTS models.</p> <p>Feb. 21, 2017 - Added the 2017 LaCrosse to Model section.</p> <p>May 23, 2017 - Added DTCs, Updated the Model, Condition, Correction and Customer Information sections.</p>

GM bulletins are intended for use by professional technicians, NOT a "do-it-yourselfer". They are written to inform these technicians of conditions that may occur on some vehicles, or to provide information that could assist in the proper service of a vehicle. Properly trained technicians have the equipment, tools, safety instructions, and know-how to do a job properly and safely. If a condition is described, DO NOT assume that the bulletin applies to your vehicle, or that your vehicle will have that condition. See your GM dealer for information on whether your vehicle may benefit from this information.



WE SUPPORT VOLUNTARY TECHNICIAN CERTIFICATION