



NA_MACK_Vehicle_Range

NA_MACK_Vehicle_Range

LR , LEU , MRU , CHU , CXU , GU , TD

Engine family

Engine family

MP7 , MP8 , MP10

Emission Standard

Emission Standard

US16 , US15 , US14 GHG

**** SOLUTION ****

Title (customer effect)

Mack Chassis - Diagnostic Trouble Codes (DTC) P10FE And P24A4 Lighting The Malfunction Indicator Light (MIL) - **US14+OBD13, US14+OBD15 And US14+OBD16 - Commonly Model Years 2015 To 2017 (Non-Common Rail Fuel System) Chassis**

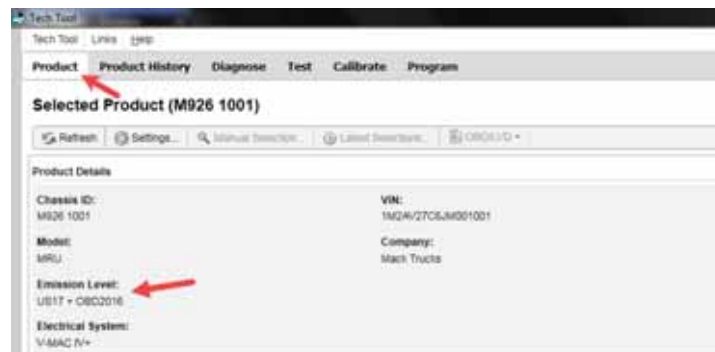
Cause

US14+OBD13, US14+OBD15 And US14+OBD16 (Commonly Year Models 2015 and 2017) Conventional Chassis that spend most of the time in stop-and-go operation may log DTCs P24A4 and P10FE, together or separately.

Solution

Verify the chassis emissions level

- Details can be found in the Product Details box on the Product tab in PTT as seen below:



For US14+OBD13

- Refer to [FSB 284-066 Engine Control Module \(ECM\) and Aftertreatment Control Module \(ACM\), Reprogramming.](#)

- This bulletin is current as of 17 April 2018.

For US14+OBD15

- Software improvements have been released to address this code. Refer to the table below:

Action Required		
ECM	Main Software	Action Required
MP7 / MP8	Equal or Less Than 22741784	Update to Latest Software
MP10	Equal or Less Than 22644017	Update to Latest Software
ACM	Main Software	Action Required
MP7 / MP8 / MP10	Equal or Less Than 22741796	Update to Latest Software

For US14+OBD16

- Refer to [FSB 284-065 Engine Control Module \(ECM\) and Aftertreatment Control Module \(ACM\), Reprogramming.](#)

- This bulletin is current as of 17 April 2018.

If any other symptoms or related codes are present, they will need to be diagnosed before P10FE and/or P24A4. Both of these codes are normally caused by other codes that are logging.

Campaign code	FSB284-065, FSB284-066
Solution visibility	Dealer distribution
Function(s)/component(s) affected	
Function affected	exhaust , DPF
Function Group	
Function Group	254 catalytic converter; exhaust emission control equipment , 258 emissions after-treatment , 284 control system, fuel supply
Customer effect	
Main customer effect	soot , regeneration , fault code/display
Fault code(s)	
OBD 2013 Diagnostic Trouble Codes	P10FE , P24A4
Administration	
Author	RU4469V
Dealer ID	RU4469V
Last modified by	RU4469V
Creation date	19-04-2018 17:04
Date of last update	19-04-2018 18:04
Status	Published

