



NA_MACK_Vehicle_Range

NA_MACK_Vehicle_Range

LR , LEU , MRU , Anthem , CHU , CXU , GU , TD

Engine family

Engine family MP7 , MP8 , MP10

Emission Standard

Emission Standard US15 , US14 GHG

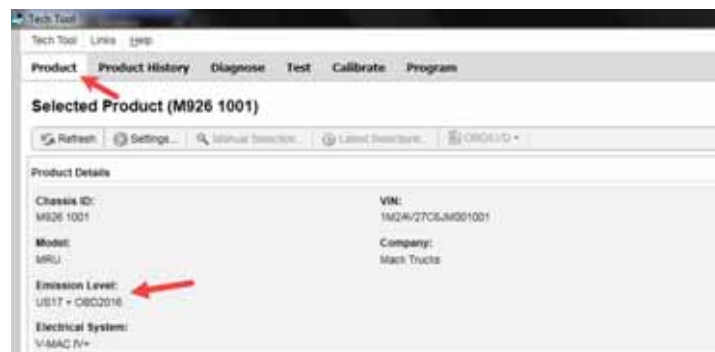
** SOLUTION **

Title (customer effect) Mack Chassis - Diagnostic Trouble Code (DTC) P208A Lighting The Malfunction Indicator Lamp (MIL) - **US14+OBD13 And US14+OBD15 Emissions, Common Model Years 2015 And 2016**

Cause Diagnostic Trouble Code (DTC) P208A Reductant Pump "A" Control may log intermittently on US14+OBD13 And US14+OBD15 Emissions (Model Year 2015, 2016) chassis, commonly during an engine cold start.

Solution **Verify the chassis emissions level**

- Details can be found in the Product Details box on the Product tab in PTT as seen below:



Review the Detailed Status Information for the relevant code on the DTC Readout.

Control Unit	DTC	Status
Brake ECU (MD 136)	SID 69: Axel load sensor, FM 2: Data erratic, intermittent, or incorrect	Active
Engine Control Module (ECM)	P229F6: NOx Sensor Gas Outlet Removed, Signal Plausibility Failure	Active

Title	Value
Confirmed DTC	True
Pending DTC	False
Test failed	True
Test failed since last clear	True
Test failed this operation cycle	True
Test not completed since last clear	False
Test not completed this operation cycle	False
Warning indicator requested	False

Once the chassis is confirmed to be the correct emissions level:

For US14+OBD13

- Software Improvements have been released to address this code. Refer to [FSB 284-066 Engine Control Module \(ECM\) and Aftertreatment Control Module \(ACM\), Reprogramming.](#)
 - This bulletin is current as of 17 April 2018.

For US14+OBD15

- Software improvements have been released to address this code. Refer to the table below:

Action Required		
ECM	Main Software	Action Required
MP7 / MP8	Equal or Less Than 22741784	Update to Latest Software
MP10	Equal or Less Than 22644017	Update to Latest Software
ACM	Main Software	Action Required
MP7 / MP8 / MP10	Equal or Less Than 22741796	Update to Latest Software

If software shows to be current, ensure the Confirmed DTC status is True as shown above, then proceed with diagnostics. Review and diagnose any related codes prior to replacing any parts for P208A findings.

- **If the Confirmed DTC status is FALSE**, DO NOT proceed with diagnosis. Address any other issues, clear the codes, and release the chassis.

Solution visibility

Dealer distribution

Function(s)/component(s) affected

Function affected

DEF Dosing , SCR , battery/power supply , low voltage disconnect , 1 1 0 EMS , 2 1 0 ACM , Diagnostic tool

Function Group

Function Group

254 catalytic converter; exhaust emission control equipment , 258 emissions after-

