



SUBARU®

QUALITY DRIVEN SERVICE

PANASONIC AUDIO SYSTEMS TROUBLESHOOTING GUIDE

- **2010-2014MY LEGACY and OUTBACK MODELS**
- **2009-2013MY FORESTER MODELS**
- **2008-2011MY IMPREZA MODELS**

!IMPORTANT!

- Whenever possible confirm the condition as reported by the customer before starting diagnosis.
- Make sure the vehicle has a fully-charged battery before proceeding, approximately 12.63 volts.
- Ensure that all related wiring harness connectors are securely seated.
- When diagnosing CD-related concerns, always have a known good CD available for testing.

“This Troubleshooting Guide is intended for use by professional technicians ONLY. It is written to inform those technicians of conditions that may occur in some vehicles, or to provide information that could assist in the proper servicing of the vehicle. Properly trained technicians have the equipment, tools, safety instructions, and know-how to do the job correctly and safely. If a condition is described in this guide, DO NOT assume that your vehicle will have that condition”.

TABLE of CONTENTS:

Page 3: No radio reception

Page 4: Radio Station is selected on its own

Page 5: Weak radio reception

Page 6: Bluetooth cannot be connected or certain functions are not available

Page 7: Outside (physical) damage

Page 8: No sound

Page 9: Cutting out sound

Page 10: Distorted sound

Page 11: Volume level changes on its own

Page 12: Noise from speaker

Page 13: No power

Page 14: Power turns on and off on its own

Page 15: CD cannot be inserted

Page 16: CD does not play, "READING" / "CHECK DISC"

Page 17: CD does not play

Page 18: CD cannot be ejected

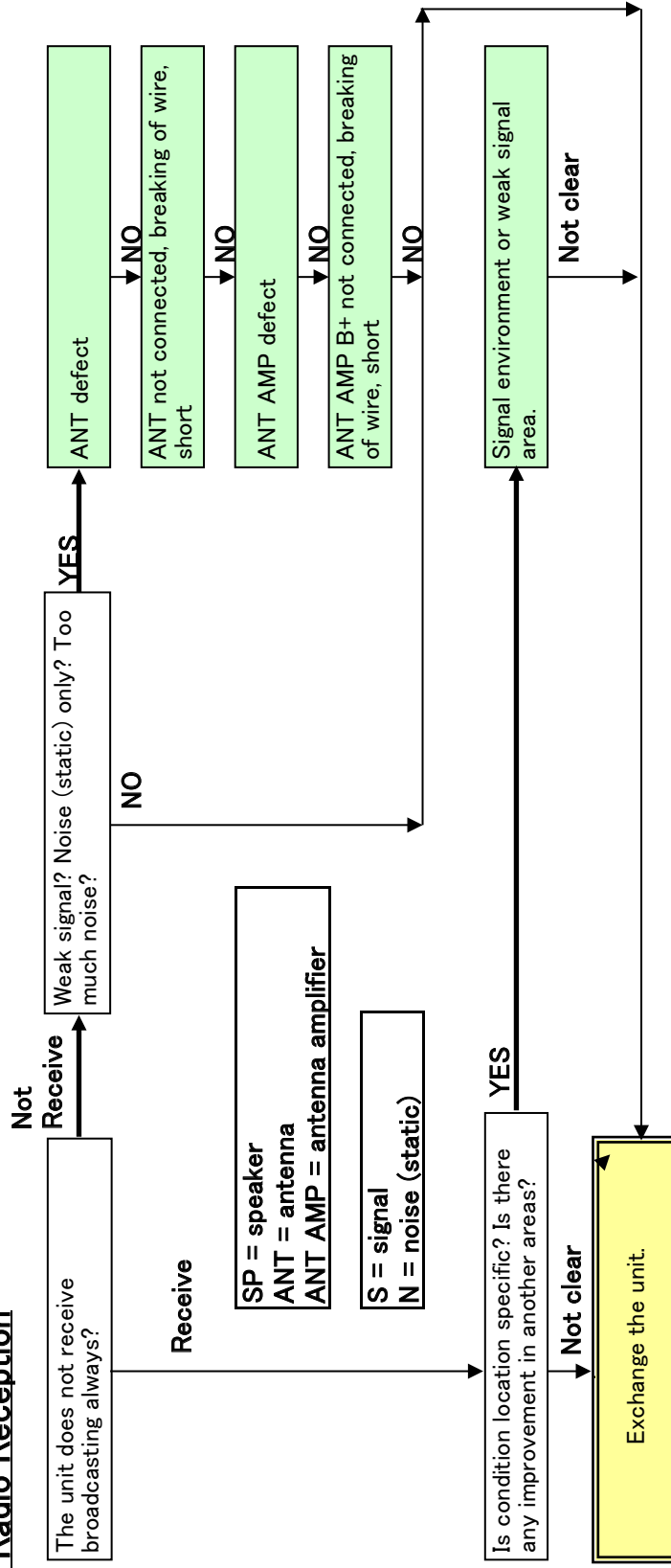
Page 19: Skipping sound

Page 20: No display or Segment(s) drop out

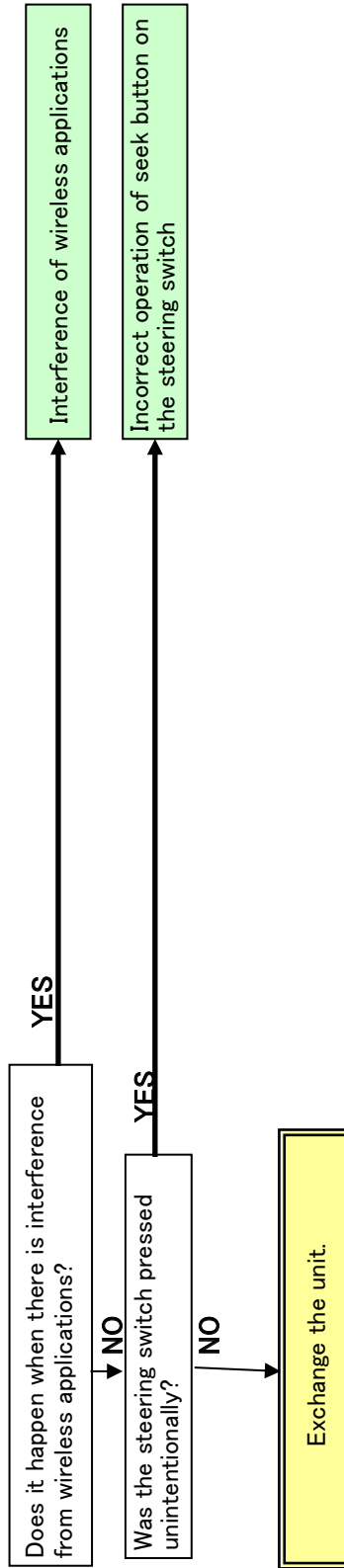
Page 21: No illumination

Page 22: Others / General issues

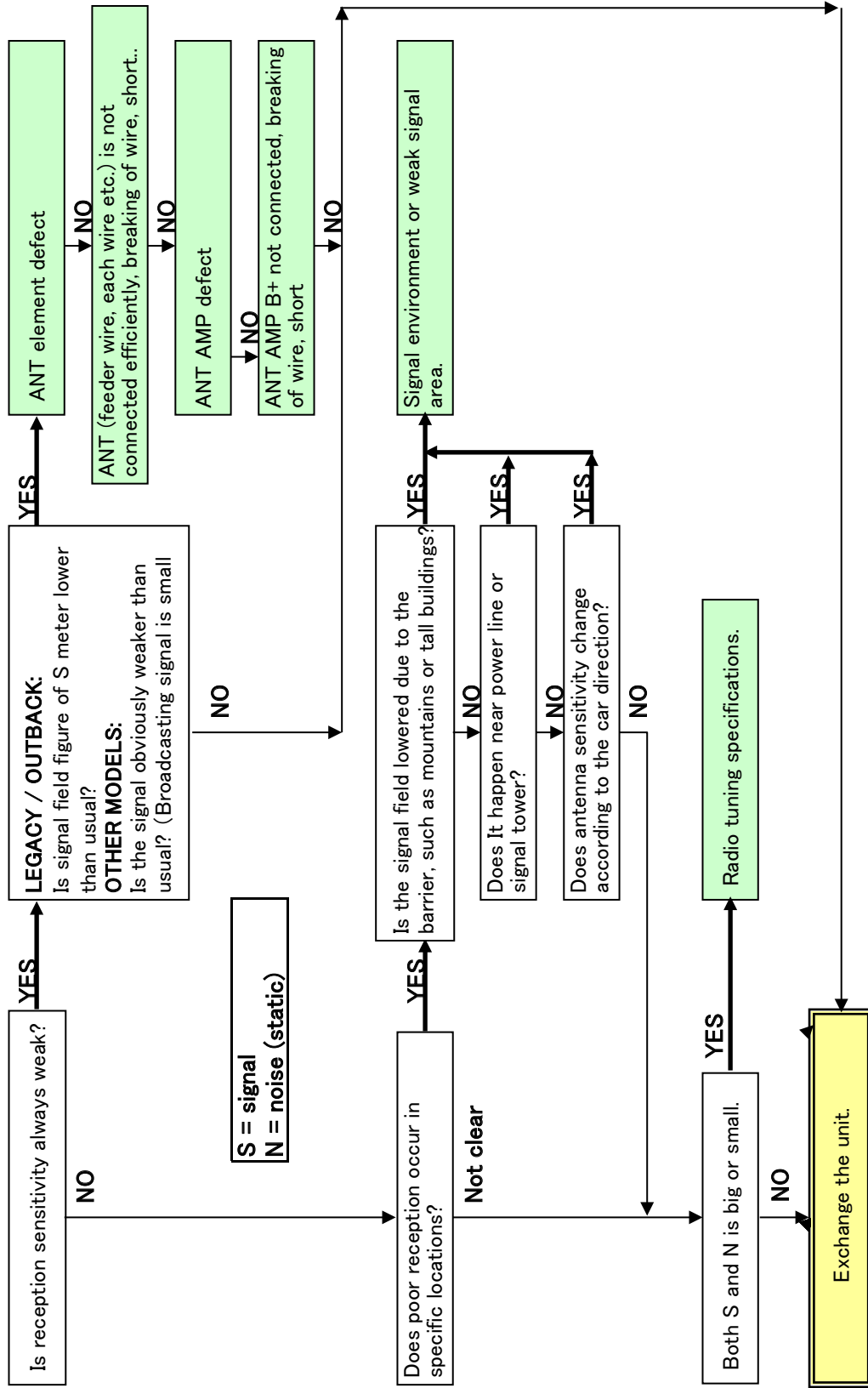
No Radio Reception



Radio station is selected on its own

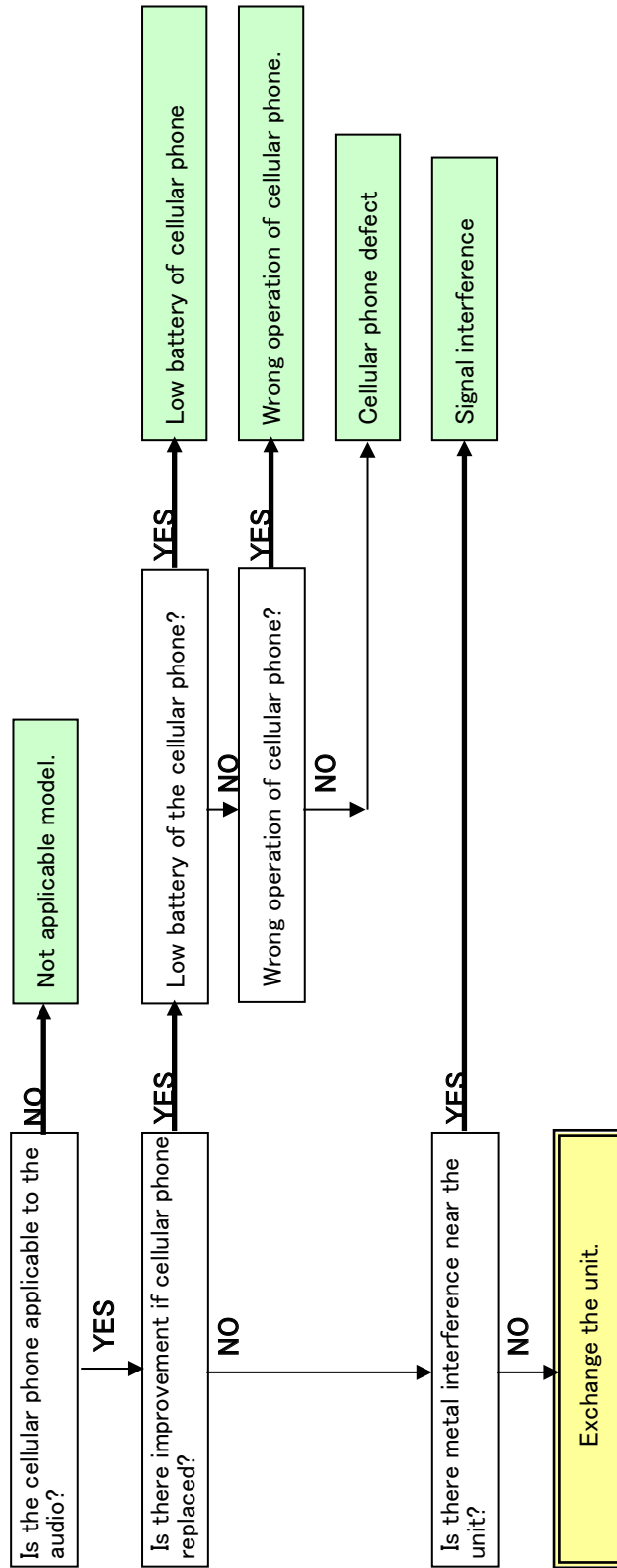


Weak radio reception

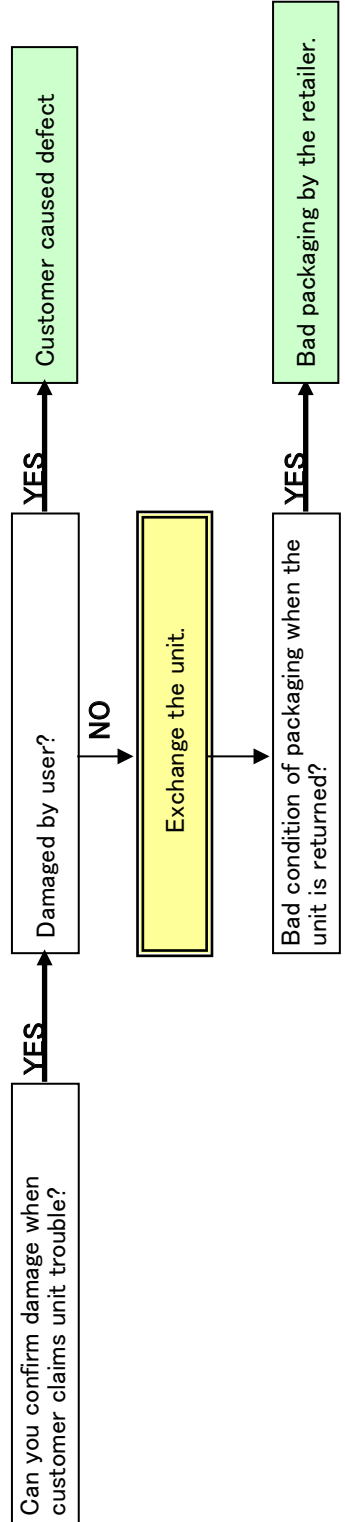


Generally speaking, under weak signal conditions, S (signal level) is small and N (noise level / static) is big. So, S/N is inferior under weak signal area if you compare with highly sensitive radio. Sometimes, by radio tuning, both S and N is big (effective in the area

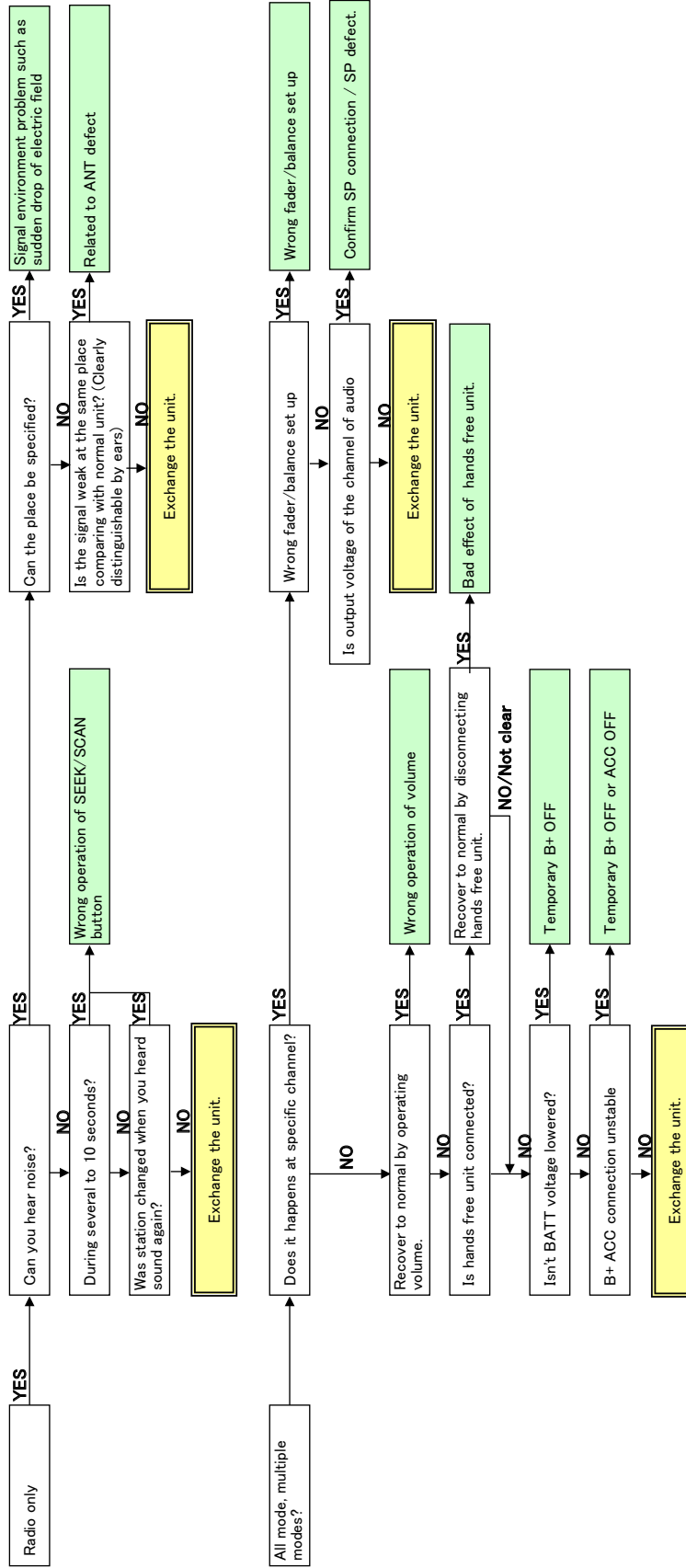
Bluetooth cannot be connected or certain functions are not available



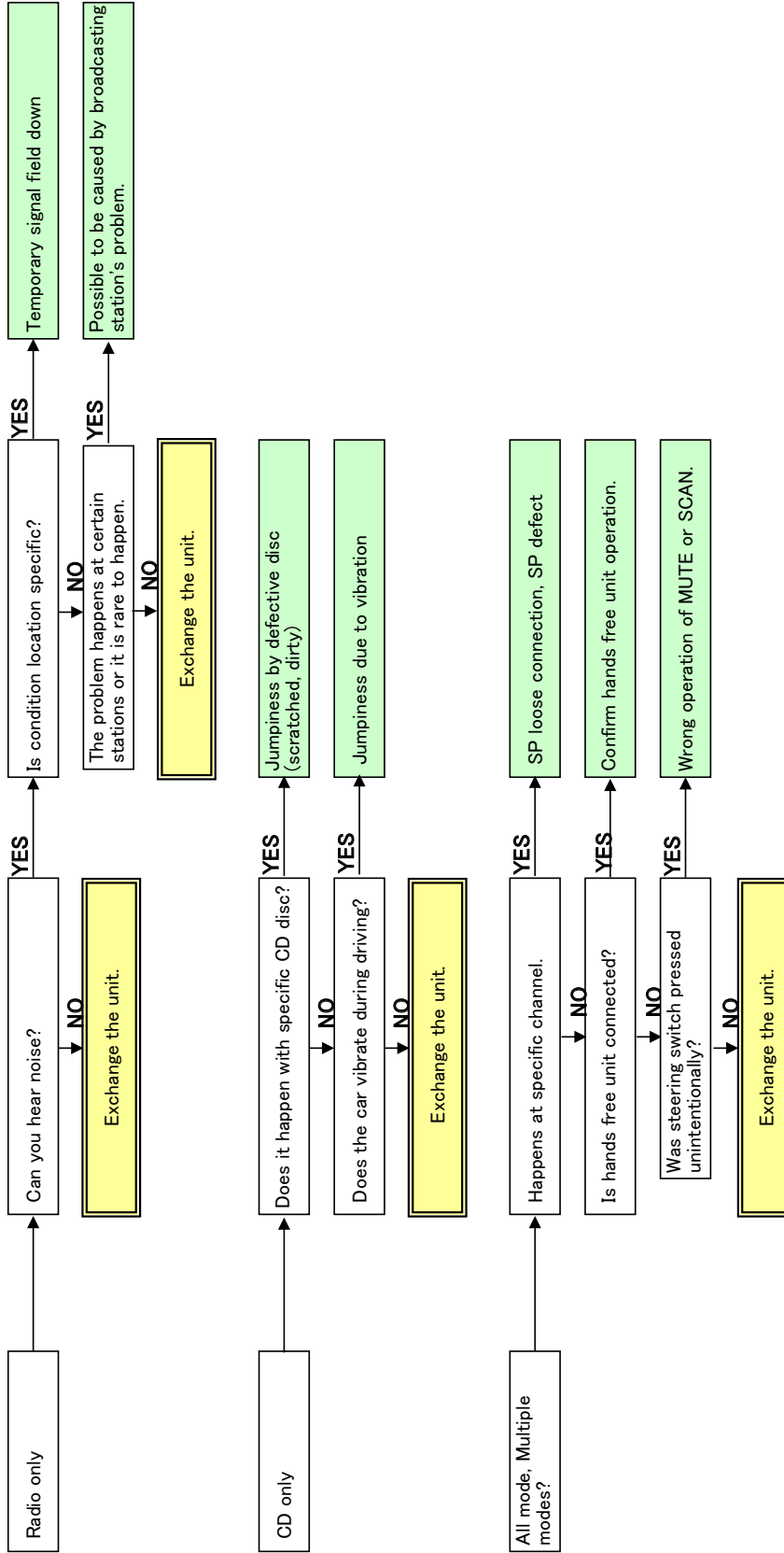
Outside (physical) damage



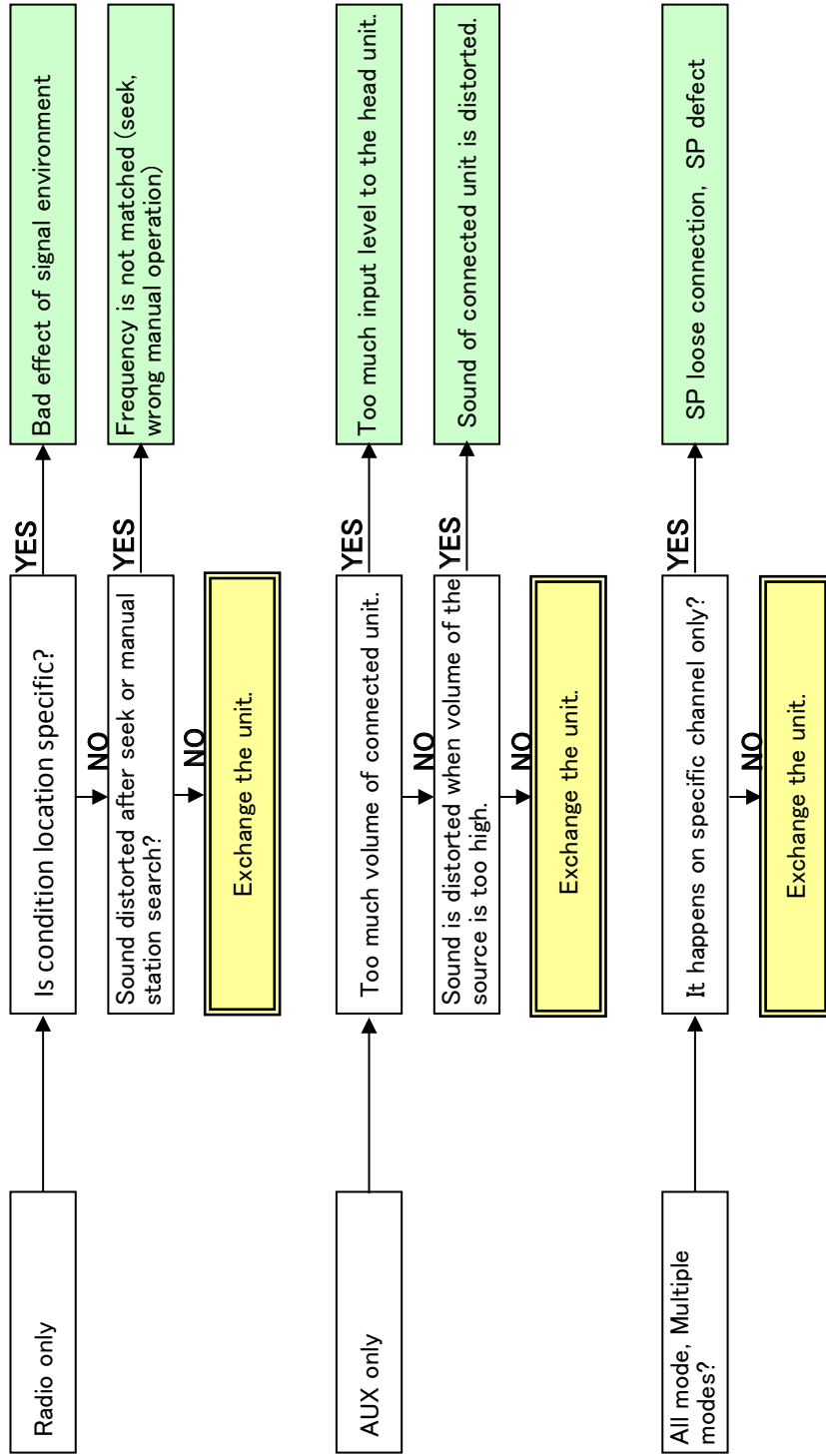
No sound



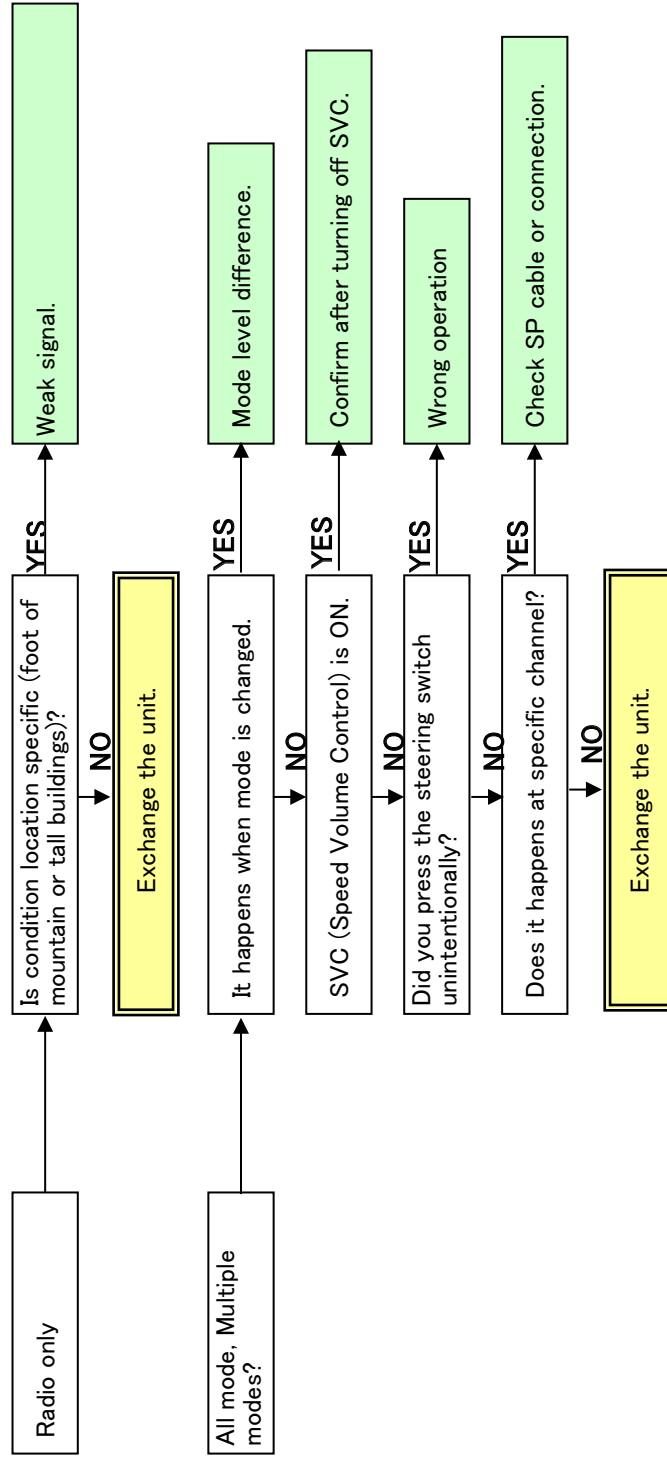
Cutting out sound



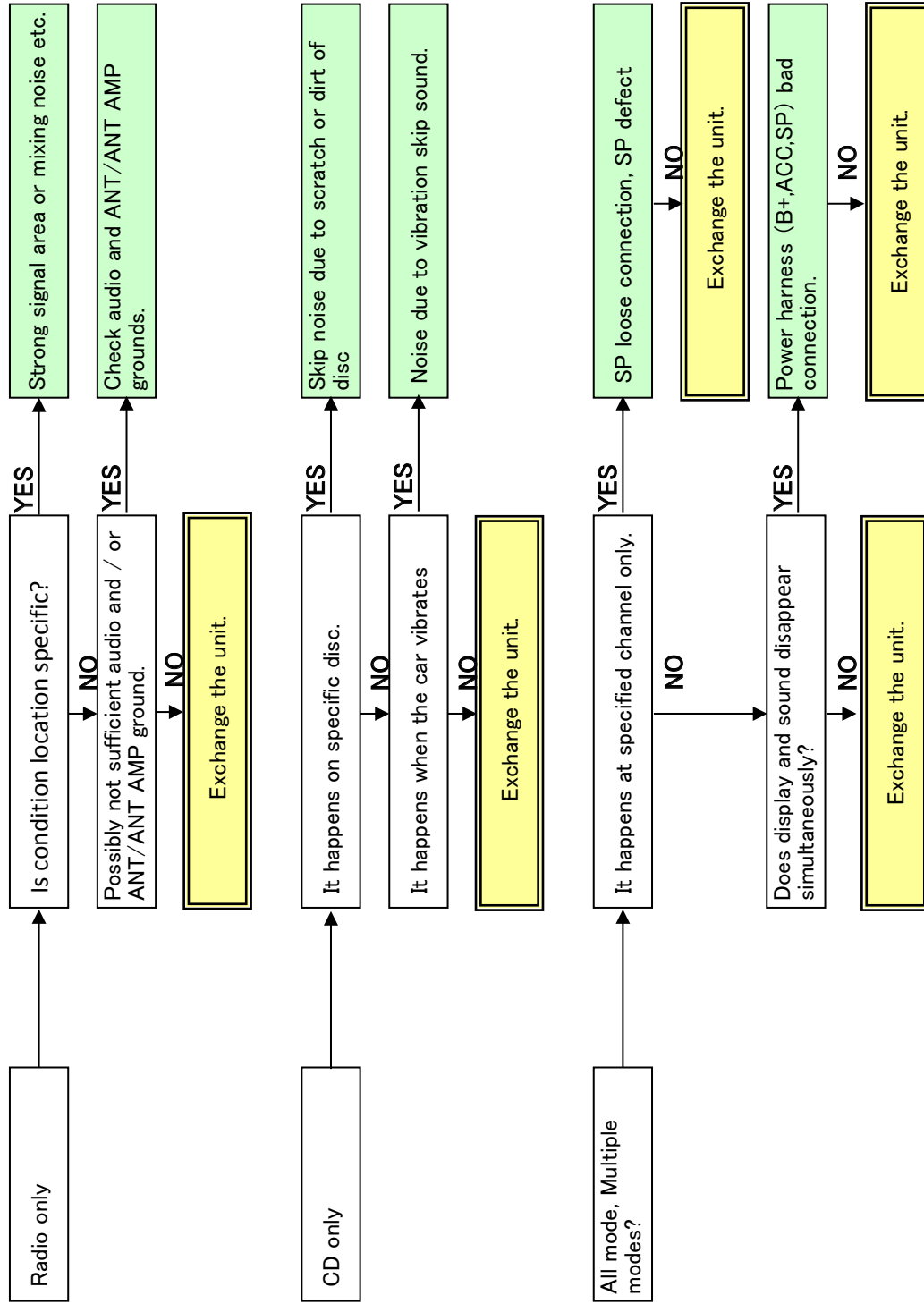
Distorted sound



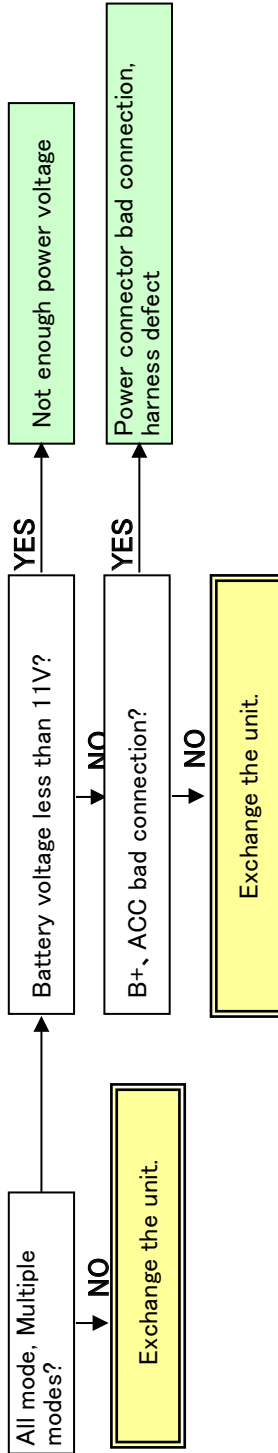
Volume level changes on its own



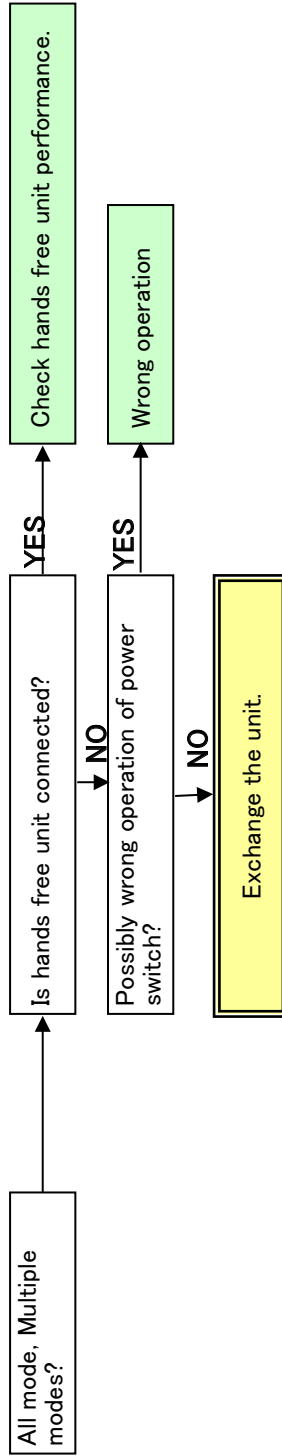
Noise from speaker



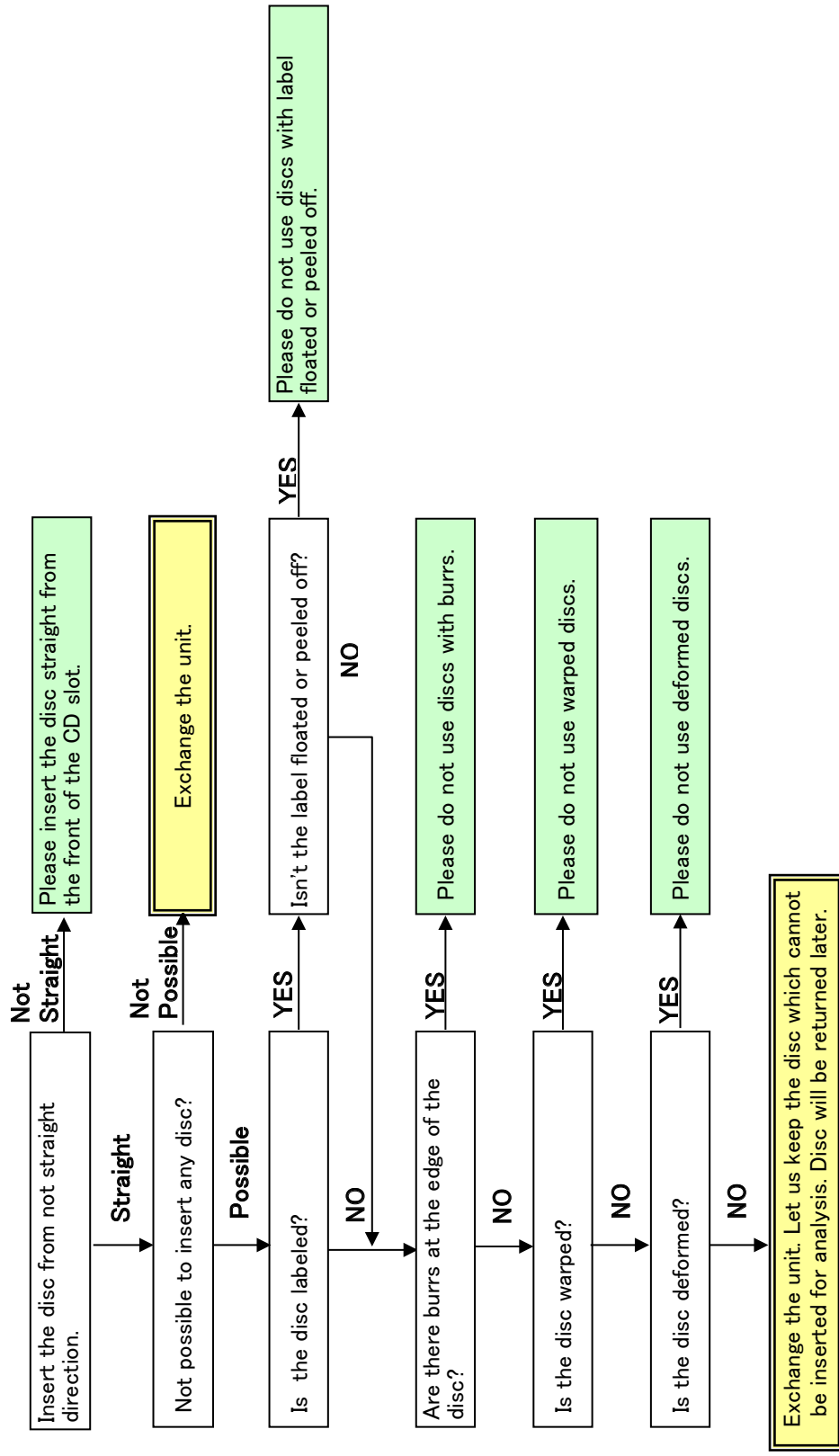
No power



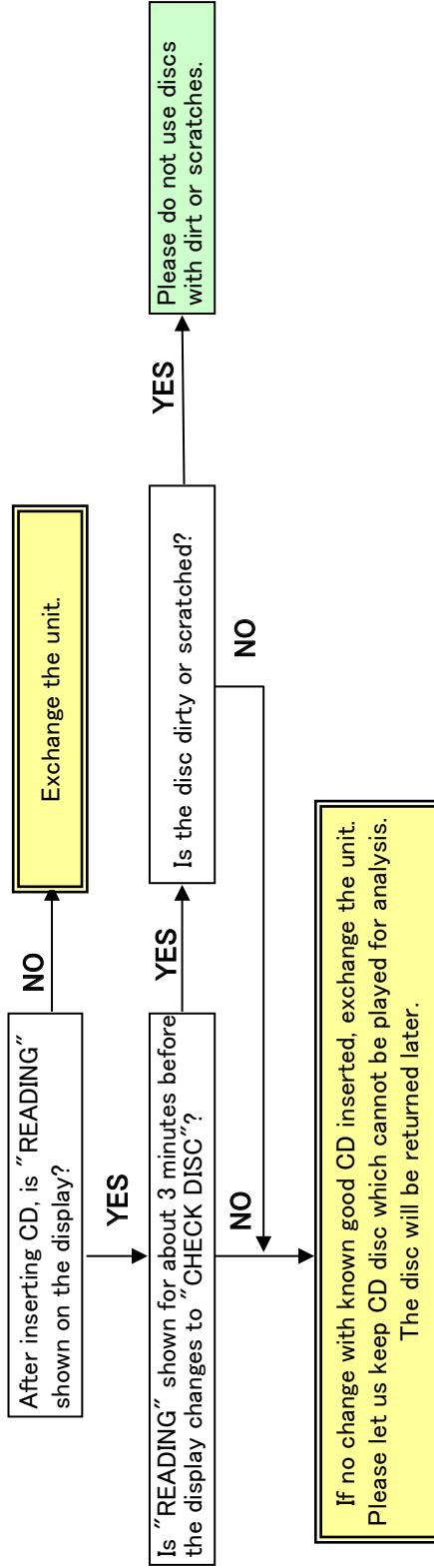
Power turns on and off on its own



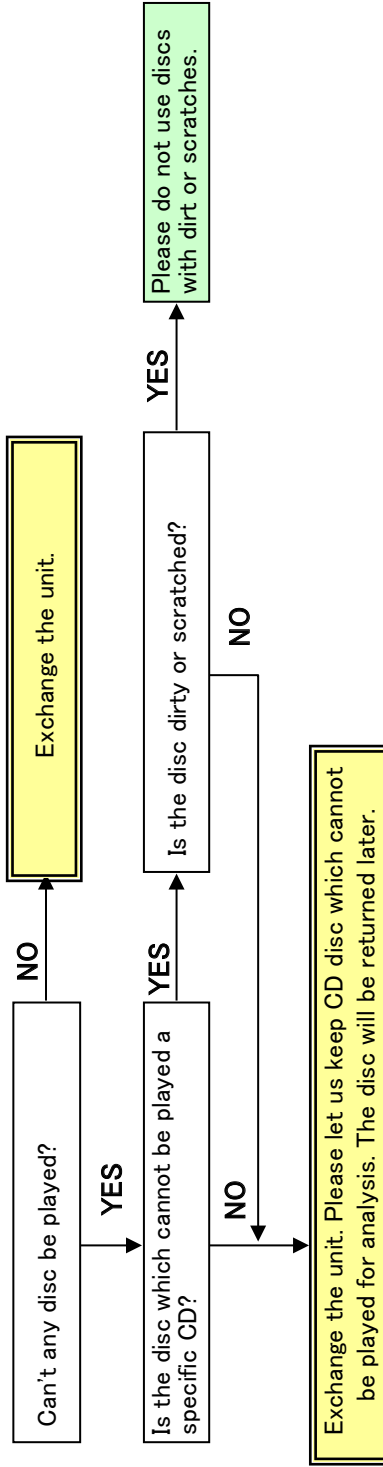
CD cannot be inserted



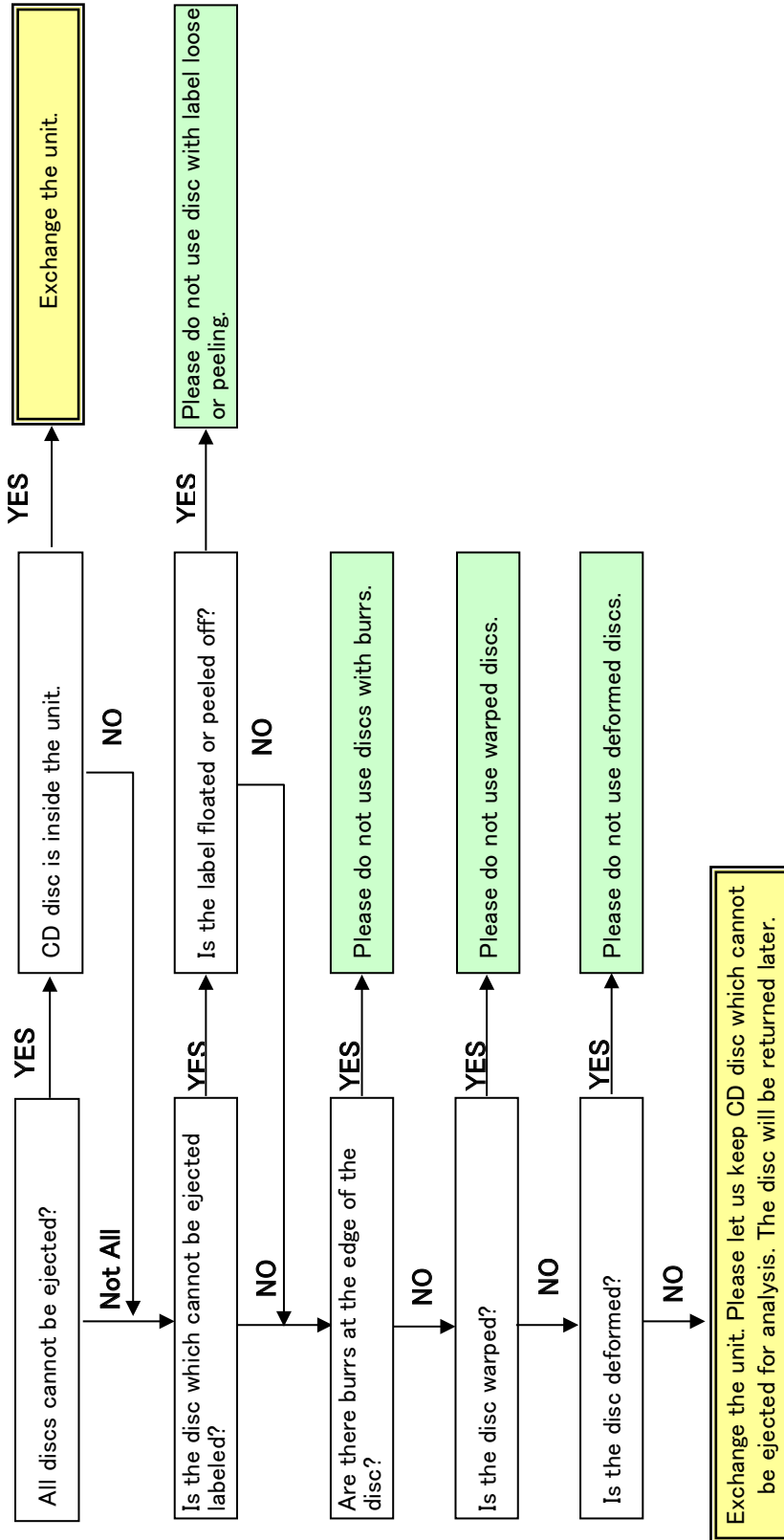
CD does not play, "READING" / "CHECK DISC"



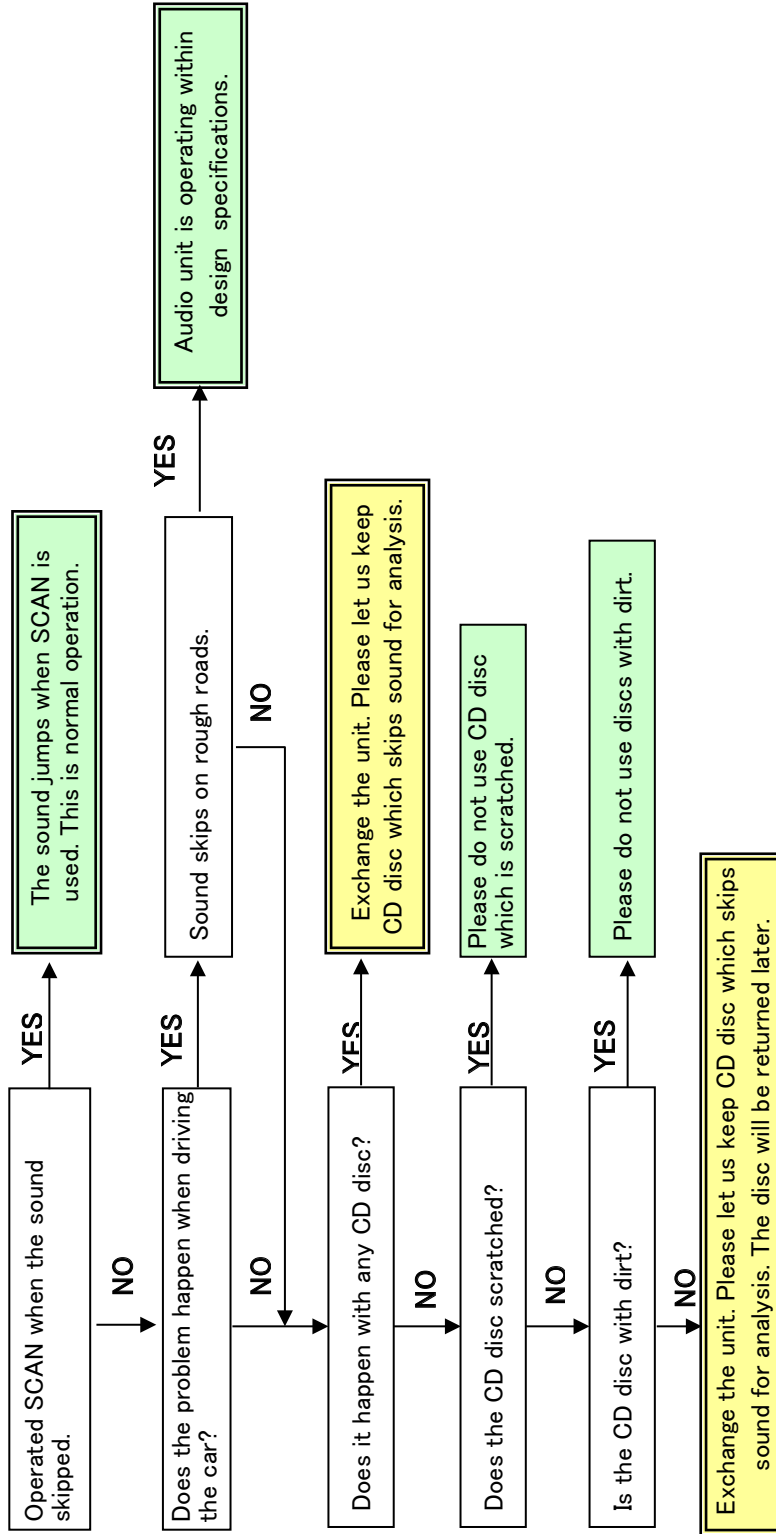
CD does not play



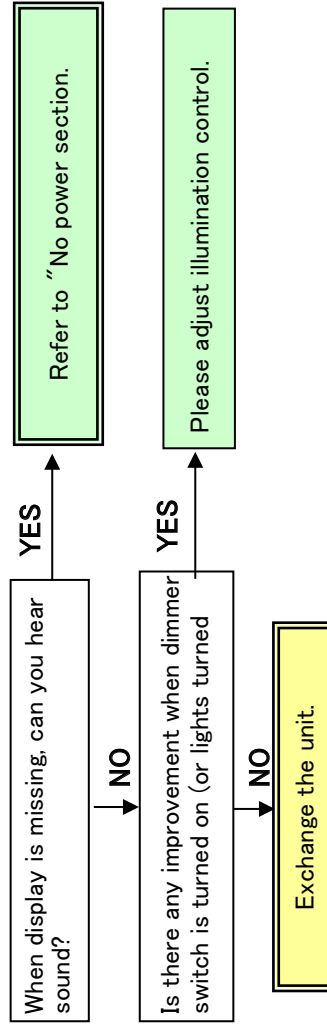
CD cannot be ejected



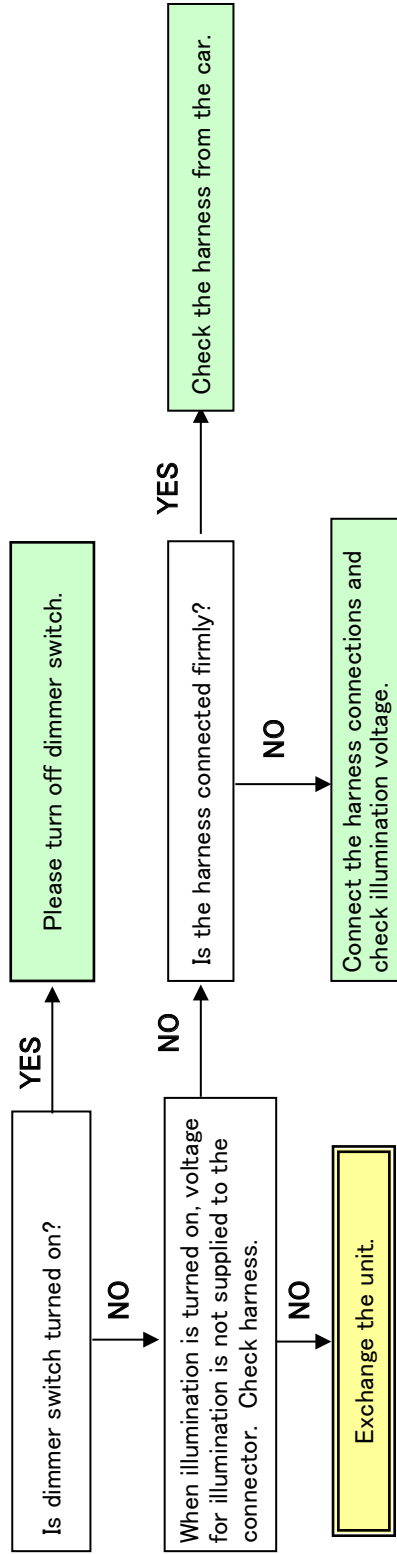
Skipping sound



No display or Segment(s) drop out



No illumination



Others / General issues

