

- ATTENTION:**
- GENERAL MANAGER
  - PARTS MANAGER
  - CLAIMS PERSONNEL
  - SERVICE MANAGER

IMPORTANT - All Service Personnel Should Read and Initial in the boxes provided, right.


© 2016 Subaru of America, Inc. All rights reserved.



QUALITY DRIVEN® SERVICE

## SERVICE INFORMATION

**APPLICABILITY:** 2014-16MY Forester

**NUMBER:** 07-108-16

**SUBJECT:** Diagnostic TIPS for ODS DTC B1760

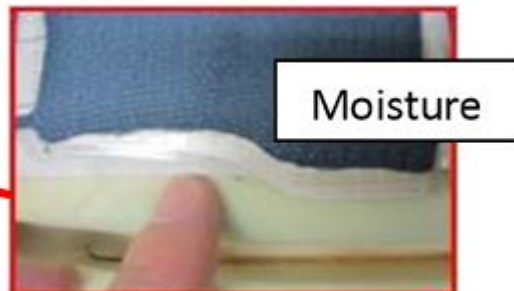
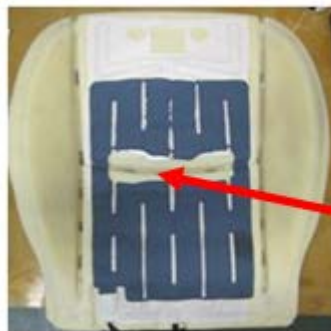
**DATE:** 04/18/16

### INTRODUCTION:

This Service Information bulletin provides a procedure for diagnosis of Occupant Detection System (ODS) DTC B1760 / Sensor Mat Abnormal. This information replaces the current procedure until the Service Manual is updated in the near future. DTC B1760 may set if liquid inadvertently spilled onto the seat cushion (or rain water entering from a window left open) penetrates the upholstery and reaches the sensor mat. This DTC can also set under high humidity conditions.

### SERVICE PROCEDURE / INFORMATION:

Inspect the seat cushion / frame assembly for evidence of moisture as shown in the example photos below then use the flow chart provided on pg. 2 to continue diagnosis.



*Continued...*

**CAUTION: VEHICLE SERVICING PERFORMED BY UNTRAINED PERSONS COULD RESULT IN SERIOUS INJURY TO THOSE PERSONS OR TO OTHERS.**

Subaru Service Bulletins are intended for use by professional technicians ONLY. They are written to inform those technicians of conditions that may occur in some vehicles, or to provide information that could assist in the proper servicing of the vehicle. Properly trained technicians have the equipment, tools, safety instructions, and know-how to do the job correctly and safely. If a condition is described, DO NOT assume that this Service Bulletin applies to your vehicle, or that your vehicle will have that condition.

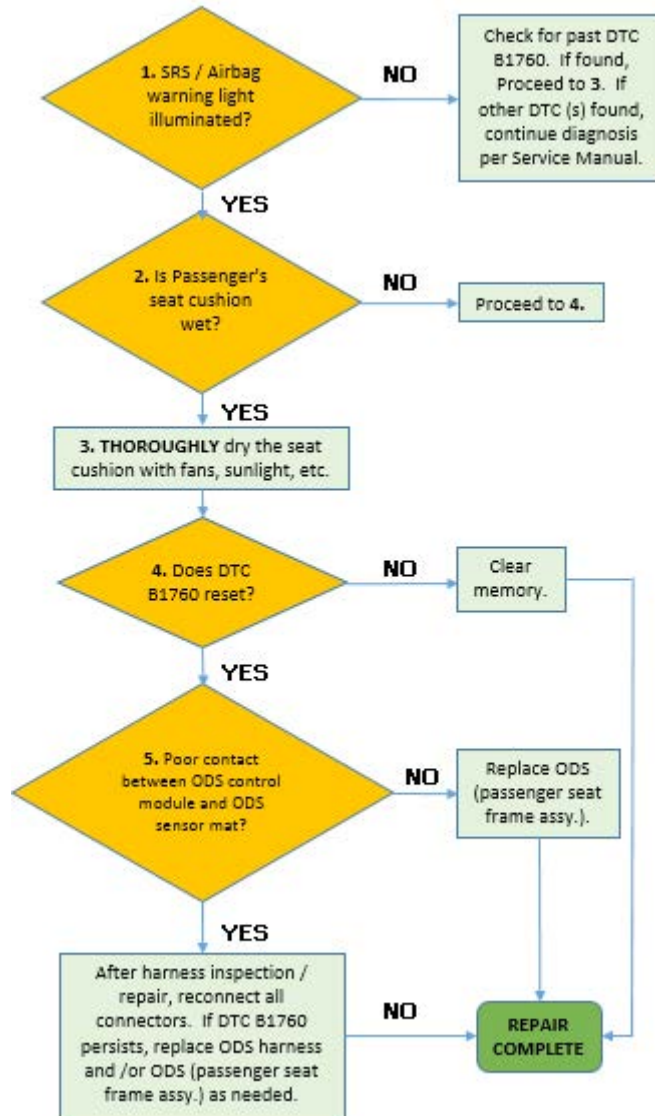
**SUBARU OF AMERICA, INC. IS ISO 14001 COMPLIANT**

ISO 14001 is the international standard for excellence in Environmental Management Systems. Please recycle or dispose of automotive products in a manner that is friendly to our environment and in accordance with all local, state and federal laws and regulations.

## Evidence of rust seen on the seat frame



### B1760 FLOW CHART



### IMPORTANT REMINDERS:

- SOA strongly discourages the printing and/or local storage of service information as previously released information and electronic publications may be updated at any time.
- Always check for any open recalls or campaigns anytime a vehicle is in for servicing.
- Always refer to STIS for the latest service information before performing any repairs.