



NA_MACK_Vehicle_Range

NA_MACK_Vehicle_Range LR , MRU , CHU , CXU , GU , TD

Engine family

Engine family MP7 , MP8 , MP10

Emission Standard

Emission Standard US15

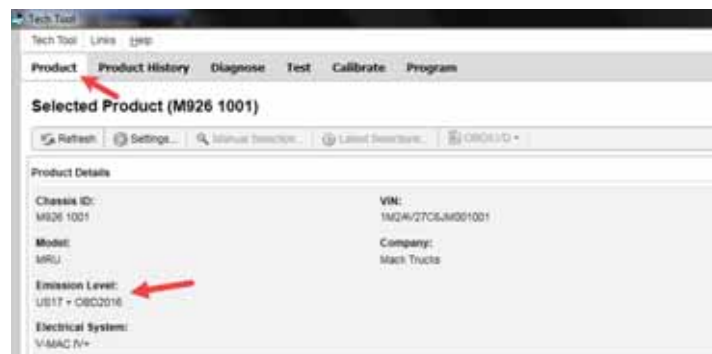
**** SOLUTION ****

Title (customer effect) Mack Chassis - Diagnostic Trouble Code (DTC) P205B Lighting The Malfunction Indicator Lamp (MIL) - **US14+OBD15 Emissions, Common Model Year 2016 ONLY**

Cause US14+OBD15 Emissions vehicles may log DTC P0507

Solution Verify the chassis emissions level

- Details can be found in the Product Details box on the Product tab in PTT as seen below:



Review the Detailed Status Information for the relevant code on the DTC Readout.

Control Unit	DTC	Status
Brake ECU (MD 136)	SID 69: Axel load sensor, FM 2: Data erratic, intermittent, or incorrect	Active
Engine Control Module (EMS)	P205B: NOx Sensor Gas Outlet Removed, Signal Plausibility Failure	Active

Title	Value
Confirmed DTC	True
Pending DTC	False
Test failed	True
Test failed since last clear	True
Test failed this operation cycle	True
Test not completed since last clear	False
Test not completed this operation cycle	False
Warning indicator requested	False

Once the chassis is confirmed to be US14+OBD15:

- Software improvements have been released to address this code. Refer to the table below:

Action Required		
ECM	Main Software	Action Required
MP7 / MP8	Equal or Less Than 22741784	Update to Latest Software
MP10	Equal or Less Than 22644017	Update to Latest Software
ACM	Main Software	Action Required
MP7 / MP8 / MP10	Equal or Less Than 22741796	Update to Latest Software

If software shows to be current, ensure the Confirmed DTC status is True as shown above, then proceed with diagnostics. Review and diagnose any related codes prior to replacing any parts for P205B findings.

- **If the Confirmed DTC status is FALSE,** DO NOT proceed with diagnosis. Address any other issues, clear the codes, and release the chassis.

Solution visibility	Dealer distribution
---------------------	-------------------------------------

Function(s)/component(s) affected

Function affected	DEF Dosing , SCR , 1 1 0 EMS , 2 1 0 ACM
-------------------	------------------------------------------

Function Group


Function Group	254 catalytic converter; exhaust emission control equipment , 258 emissions after-treatment
----------------	---------------------------------------------------------------------------------------------

Customer effect

Main customer effect	regeneration , calibration/programming/pairing/missing operation , diagnostics /methodology , efficiency/abnormal behavior , fault code/display
----------------------	-------------------------------------------------------------------------------------------------------------------------------------------------

Fluid problem	level incorrect
---------------	-----------------

Fluid implicated	AdBlue
------------------	--------

Lights/Messages on information display	 Driver's information warning pictogram
----------------------------------------	----------------------------------------------------------------------------------------------------------------------------

Fault code(s)

OBD 2013 Diagnostic Trouble Codes	P205B
-----------------------------------	-------

Conditions

Vehicle operating mode	when driving , when stationary
------------------------	--------------------------------

Frequency of occurrence of problem	random
------------------------------------	--------

Administration

Author	RU4469V
Dealer ID	RU4469V
Last modified by	RU4469V
Creation date	19-04-2018 20:04
Date of last update	19-04-2018 22:04
Status	Published
Average score	0
Number of scores	1