

**Mack Models**

**Mack Model** CHU , CXU , GU , TD

**Engine family**

Engine family MP7 , MP8 , MP10

**Emission Standard**

Emission Standard US16 , US15 , US13 OBD , US14 GHG

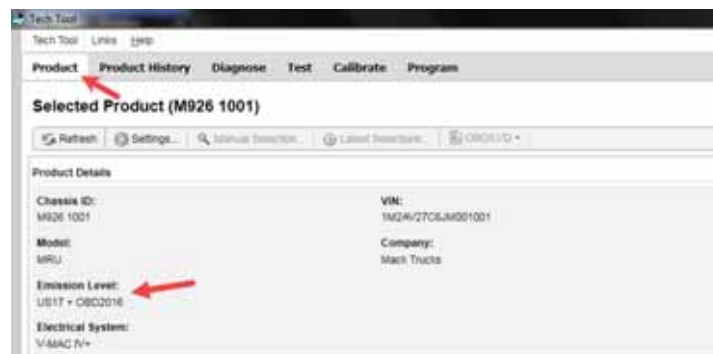
**\*\* SOLUTION \*\***

**Title** Mack Chassis - Diagnostic Trouble Code ( DTC ) P2002, Diagnostic Information - **US10 +OBD13, US14+OBD13, US14+OBD15, US14+OBD16 Emissions (Non-Common Rail Fuel System), Commonly Model Years 2014 to 2017**

**Cause** Diagnostic Trouble Code (DTC) P2002 may log on OBD13 and newer chassis.

**Solution** **Verify the chassis emissions level**

- Details can be found in the Product Details box on the Product tab in PTT as seen below:

**For US14+OBD13**

- Refer to [ESB 284-066 Engine Control Module \(ECM\) and Aftertreatment Control Module \(ACM\) Reprogramming](#).
  - This bulletin is current as of 17 April 2018.

**For US14+OBD15**

- Software improvements have been released to address this code. Refer to the table

below:

Action Required		
ECM	Main Software	Action Required
MP7 / MP8	Equal or Less Than 22741784	Update to Latest Software
MP10	Equal or Less Than 22644017	Update to Latest Software
ACM	Main Software	Action Required
MP7 / MP8 / MP10	Equal or Less Than 22741796	Update to Latest Software

**For US14+OBD16**

- Refer to [SNM15-033](#) for further information.

<b>Campaign code</b>	SNM15-033, FSB284-066
<b>Solution visibility</b>	<a href="#">Dealer distribution</a>
<b>Function(s)/component(s) affected</b>	
<b>Function affected</b>	SNM , FSB , exhaust , DPF , 1 1 0 EMS , AFFI2000 , Diagnostic tool
<b>Function Group</b>	
<b>Function Group</b>	254 catalytic converter; exhaust emission control equipment , 258 emissions after-treatment
<b>Customer effect</b>	
<b>Main customer effect</b>	regeneration , calibration/programming/pairing/missing operation , diagnostics /methodology , efficiency/abnormal behavior , fault code/display
<b>Fluid implicated</b>	air
<b>Lights/Messages on information display</b>	 Driver's information warning pictogram
<b>Fault code(s)</b>	
<b>OBD 2013 Diagnostic Trouble Codes</b>	P2002
<b>Conditions</b>	
<b>Vehicle operating mode</b>	when driving , when stationary
<b>Frequency of occurrence of problem</b>	random
<b>Administration</b>	
<b>Author</b>	a175606
<b>Last modified by</b>	RU4469V
<b>Creation date</b>	15-12-2015 15:12
<b>Date of last update</b>	08-05-2018 15:05
<b>Status</b>	Published

Average score 0

---

Number of scores 1

---