



Mack Models

Mack Model LR , LEU , MRU , AN-Anthem , CHU , CXU , GU , TD

Engine family

Engine family MP7 , MP8 , MP10

Emission Standard

Emission Standard 2018 , OBD2017 , US17 GHG , US16 , US15 , US14 GHG

**** SOLUTION ****

Title Mack Chassis - Diagnostic Trouble Codes (DTC's) P24A0 And P249F Lighting The Malfunction Indicator Lamp (MIL) - **US14+OBD15, US14+OBD16 (Common Model Years 2016 And 2017), US17+OBD16 And Newer (Common Rail Fuel System, Model Year 2018)**

Cause Vehicles may display the MIL and one or both of the following DTCs:

- P24A0 - Closed Loop DPF Regeneration Control At Limit - Temperature Too Low
- P249F - Excessive Time To Enter Closed Loop DPF Regeneration Control

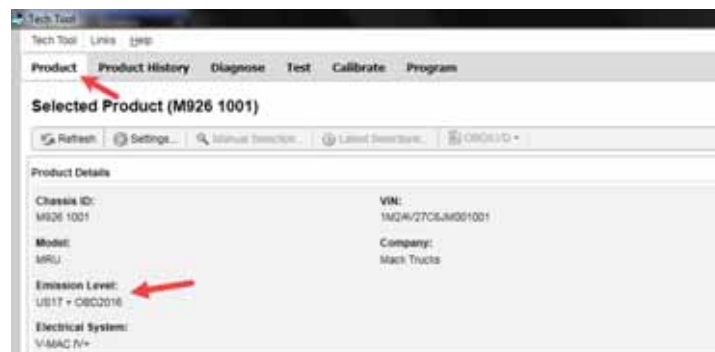
These DTCs set from monitors on operations requiring Aftertreatment Hydrocarbon Injector (AHI, 7th Injector) input, including:

- Moving Crystal Sublimations (OBD15 and OBD16 emissions levels)
- Moving Sulfur Regenerations (US17 / OBD2016 emission level only)

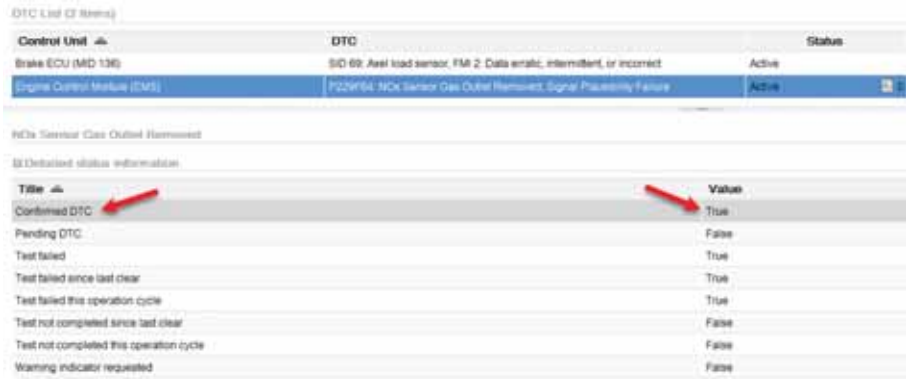
These operations run in the background and are transparent to the driver. The fault codes **do not inhibit regeneration** or cause any operational problem with the vehicle except for the MIL illuminating. The regen will continue normally even with the fault codes present. The faults may set over a several day period due to the amount of time it takes to complete some moving regenerations.

Solution **Verify the chassis emissions level**

- Details can be found in the Product Details box on the Product tab in PTT as seen below:



Review the Detailed Status Information for the relevant code on the DTC Readout.



For US14+OBD15 And US14+OBD16

Software improvements have been released for both emissions levels to address this DTC. Field Service Bulletins with information and instructions have been published for each emissions level. Both FSBs can be found under the Service tab in [Impact, Function Group 284](#). The articles can also be searched for by Title. Refer to the chart below for the correct bulletin information:

Emissions Level (Model Year)	Field Service Bulletin
US14+OBD15 (2016)	FSB 284-064 Engine Control Module (ECM) and Aftertreatment Control Module (ACM), Reprogramming
US14+OBD16 (2017)	FSB 284-065 Engine Control Module (ECM) and Aftertreatment Control Module (ACM), Reprogramming

If the Bulletin does not appear when searched with either VIN or Chassis information entered, search by model:

1. Clear any chassis information from the Search box.
2. Select or enter the applicable model.



3. Make sure Title is selected in the Search By field. Enter the correct Bulletin title in the text entry field.

Additional search values ▾

Search by:

Titles ▾

FSB 284-065

4. Press the Search button. The operation will appear in the results window.

Fgrp	Title	Info type	ID/Operation
284	FSB 284-065, Engine Control Module (ECM) and Aftertreatment Control Module (ACM), Reprogramming	Repair	2841.22.09-17

5. Select the correct vehicle configuration from the list that appears as shown below:

FSB 284-065, Engine Control Module (ECM) and Aftertreatment Control Module (ACM), Reprogramming ×

Description	ID	Date
<input type="checkbox"/> CXU, ENG-VE11, EOBD-U16, Assembly Date 2016-01-01 - 2016-12-31		06/09/2018
<input type="checkbox"/> CXU, ENG-VE13, EOBD-U16, Assembly Date 2016-01-01 - 2016-12-31		
<input type="checkbox"/> CXU, ENG-VE16, EOBD-U16, Assembly Date 2016-01-01 - 2016-12-31		

For US17+OBD16 (Common Rail Fuel System) chassis:

- **Verify that EMS and ACM software do not have any updates available**
- Perform a sulfur regen using Premium Tech Tool (PTT) and clear DTCs.
- This will temporarily resolve the fault codes. **Do Not** change any components on subject vehicles with these fault codes.

If software is found to be current, diagnosis should only proceed if the Confirmed DTC status for P249F is True as shown above. If the status is False, other symptoms or fault codes should be diagnosed and the codes cleared when complete.

If any other symptoms or related codes are present, they should be diagnosed prior to beginning steps for P249F.

NA_Sister solutions

[K86412082](#)

Campaign code

FSB284-064, FSB284-065

Solution visibility

Dealer distribution

Function(s)/component(s) affected

Function affected

exhaust , 1 1 0 EMS , Diagnostic tool

Function Group

Function Group

254 catalytic converter; exhaust emission control equipment , 258 emissions after-treatment , 2841 Electronic Control Unit

Customer effect

Main customer effect

regeneration , calibration/programming/pairing/missing operation , diagnostics

Fault code(s)

OBD 2013 Diagnostic
Trouble Codes P249F00 , P24A0

Conditions

Vehicle operating mode when driving , when stationary

Frequency of occurrence of
problem random

Administration

Author RU4469V

Dealer ID RU4469V

Last modified by RU4469V

Creation date 23-04-2018 18:04

Date of last update 19-06-2018 20:06

Review date 30-06-2020 00:06

Status Published

Average score 1

Number of scores 1

NA_Author_Group GTT
