

Bulletin Type.....: Safety Recall

Bulletin No.....: TS-S131

Bulletin Name.....: Nozzle Replacement

Bulletin Ref No.....: 700003560

Revision No.....:

NHTSA.....:17V777

Release Date.....: 25.07.2018

Vehicle Model.....: TS45

Fiat Rate Code.....: TSS131

Flat Rate Time.....: 60 min

Subject:Firetrace fire suppression system nozzle replacement

Summary:This technical service bulletin gives instructions about how to replace the nozzles of Firetrace fire suppression system

Bulletin Responsible:Hande YILDIRIM

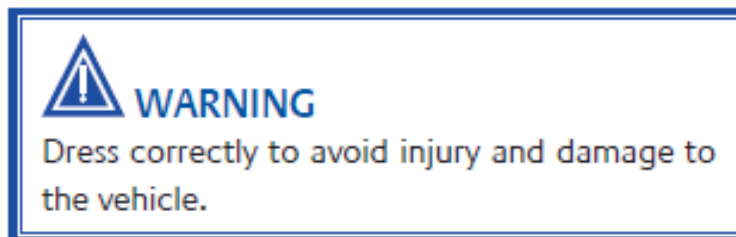
Published by&Approved by: Mert SALMAN

Welding on the Chassis

- Always disconnect the batteries (starting with the negative lead).
- Disconnect the connectors of electrical and electronic equipment (electronic control units, sensors and actuators) if they are less than 2 meters away from the chassis part to be welded or the earth terminal of the welding equipment.
- The earth terminal should never be attached to vehicle components such as engine, axles and springs. Arcing on these parts is not permitted, because of the risk of damage to bearings, springs, etc.
- The earth terminal must make good contact and be placed as close as possible to the part to be welded.
- Plastic pipes, rubber parts and parabolic springs should be well protected against welding spatter and temperatures higher than 70°.
- The contact switch must not be in the accessory or contact position. The contact key should be removed.

GENERAL PRECAUTIONS

1. Suggested Dress Code:



2. Before Starting the Work:

Always wear protective clothing. Do not wear any damaged or loose-fitting clothing and remove jewelry before starting the work. In case of long hair use hairnet. The illustration above shows some of the correct and incorrect clothing that should be worn during work. Sharp edges should be avoided e.g belts, watches, necklaces etc.

3. Interior materials protection:

Seats, trimming, upholstery stuff and carpeting should be protected with appropriate coverings.

Instructions



Below instruction needs to be reviewed before the application is done;

ILP NOZZLE REPLACEMENT PROGRAM FOR SELECT SYSTEMS*

*NOTE THESE NOZZLES UPDATES ARE ONLY FOR SPECIFIC SYSTEMS, AND ARE NOT REQUIRED FOR ALL ILP SYSTEMS.

INSTRUCTIONS

Ensure that you have the correct nozzle replacement kit for your system, either CE or DOT. System identification is easily accomplished by determining the nozzle type as follows:

500001		CE Systems: The nozzles on a CE system will feature a flat face with 4 orifices on the face, and 6 radial orifices on the sides. It is approximately 9/16" (14.3mm) across the flats and 1/2" (12.7mm) tall.
500002		DOT Systems: The nozzles on a DOT system feature a face with a beveled edge and 4 orifices, with 6 radial nozzles on the sides. It is approximately 15/16" (24mm) across the flats and 13/16" (19.7mm) tall.

FOR CE SYSTEMS (SYSTEMS USING NOZZLE P/N 500001 AS SHOWN ABOVE):

The kit contains either 2 or 4 sets of nozzles and adapters per the system design.

1. Remove the existing nozzle with a spanner (wrench) to remove the nozzle from the fitting whilst clamping the fitting to avoid disturbing other connections. Discard the nozzle.
2. (If applicable) Remove and discard the rubber cap on the nozzle.
3. Install the adapter, wrapping the male connections with PTFE tape. Use care to secure the fitting while tightening the adapter, hand tight plus 1.5 turns.
4. Install the nozzle, again using PTFE tape on the male connection. Use care to secure the fitting while tightening the nozzle on to the adapter, hand tight plus 1.5 turns.
5. (If applicable) The newly supplied nozzle cap may then be installed by first sliding the tether over the nozzle and then placing the cap in place over the nozzle.

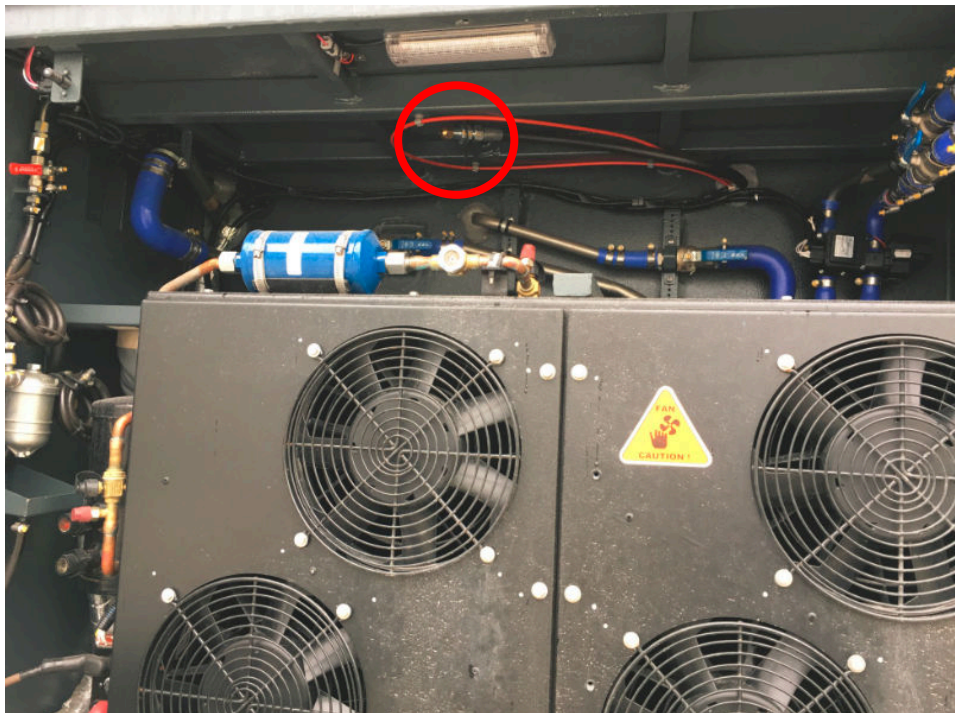
FOR DOT SYSTEMS (SYSTEMS USING NOZZLE P/N 500002 AS SHOWN ABOVE):

The kit contains either 2 or 4 nozzles per the system design (no adapters are required).

1. Remove the existing nozzle with a spanner (wrench) to remove the nozzle from the fitting whilst clamping the fitting to avoid disturbing other connections. Discard the nozzle.
2. (If applicable) Remove and RETAIN the rubber cap on the nozzle.
3. Install the nozzle using PTFE tape on the male connection. Use care to secure the fitting while tightening the nozzle on to the fitting, hand tight plus 1.5 turns.
4. (If applicable) The nozzle cap may then be reinstalled by first sliding the tether over the nozzle and then placing the cap in place over the nozzle.

Locations of the 4 nozzles for TS45 vehicle are shown as follow;

1. Nozzle 1 is located at the AC condenser room;



SERVICE BULLETIN



2. Nozzle 2,3 and 4 can be reached by opening the engine maintenance lid which is located at the end of the aisle;

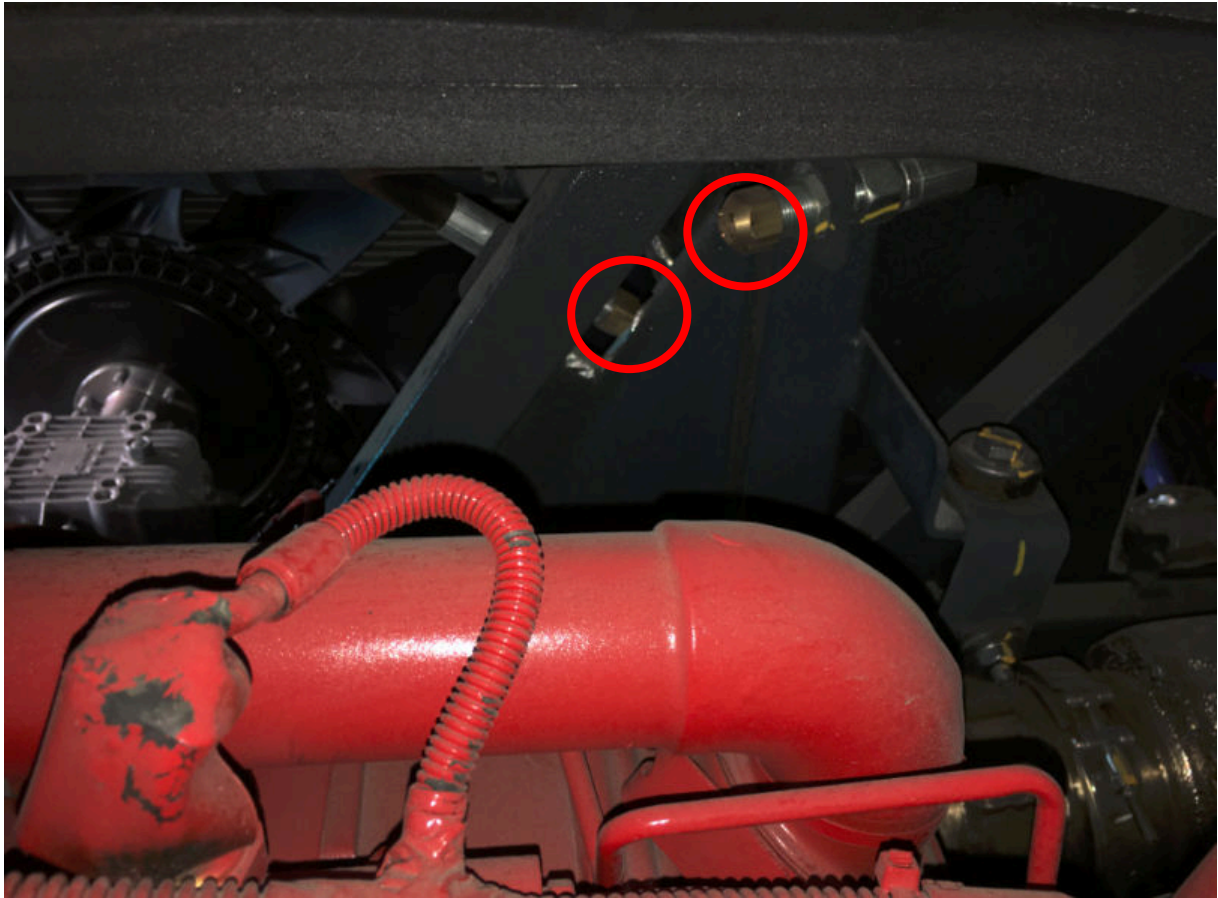
2.a Bolts need to be unscrewed to reach out the nozzles;



SERVICE BULLETIN

2.b One of the nozzles can be reached on the curbside and the other two can be reached on the driver side which is located under the maintenance lid.





**Please note that locations of the nozzles may vary according to model year of the coach.

RATE BREAK DOWN

Application	Time
Tool preparation	5 min
Removal & Installation of the maintenance lid	5 min
Removal of the nozzles	25 min
Installation of the nozzles	25 min
Total	60 min