



SERVICE BULLETIN

Classification: EL18-005a	Reference: NTB18-041a	Date: July 19, 2018
------------------------------	--------------------------	------------------------

2017-2018 ROGUE, ROGUE HYBRID AND ROGUE SPORT; UNEXPECTED OPERATION OF AEB, FEB OR FCW

**This bulletin has been amended. Changes have been made throughout.
It is necessary for you to read this revised procedure to properly perform this action.
Please discard all previous versions of this bulletin.**

APPLIED VEHICLES: 2017-2018 Rogue (T32)
 2017-2018 Rogue Sport (J11)
 2017-2018 Rogue Hybrid (T32)

IF YOU CONFIRM

The following system(s) operate unexpectedly or the customer reports unexpected operation:

- AEB (Automatic Emergency Braking)
- FEB (Forward Emergency Braking)
- FCW (Forward Collision Warning)

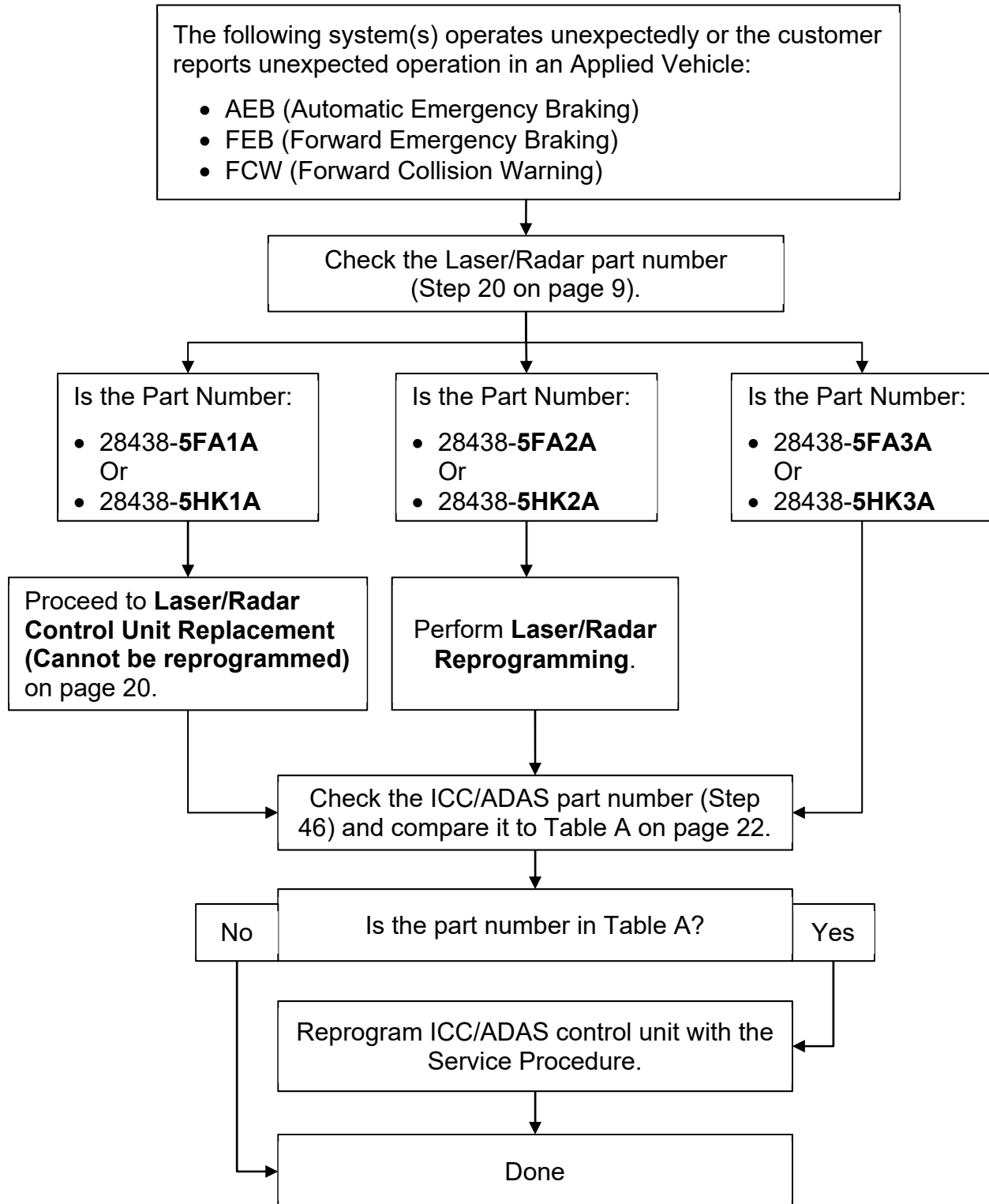
ACTION

Refer to the Repair Overview on page 2.

IMPORTANT: The purpose of ACTION (above) is to give you a quick idea of the work you will be performing. You **MUST** closely follow the entire SERVICE PROCEDURE as it contains information that is essential to successfully completing this repair.

Nissan Bulletins are intended for use by qualified technicians, not 'do-it-yourselfers'. Qualified technicians are properly trained individuals who have the equipment, tools, safety instruction, and know-how to do a job properly and safely. NOTE: If you believe that a described condition may apply to a particular vehicle, DO NOT assume that it does. See your Nissan dealer to determine if this applies to your vehicle.

Repair Overview



NOTE: If neither reprogramming, nor the replacement of the Laser/Radar control unit were performed, refer to the Electronic Service Manual (ESM) for further diagnostic information.

SERVICE PROCEDURE

Laser/Radar Reprogramming

IMPORTANT: Before starting, make sure:

- **ASIST on the CONSULT PC has been synchronized (updated) to the current date.**
- **All CONSULT–III plus (C-III plus) software updates (if any) have been installed.**
NOTE: The CONSULT PC automatically gets applicable reprogramming data during ASIST synchronization.
- A screen print for Warranty documentation can be done from the CONSULT PC during this process while still connected to the vehicle.
- **The CONSULT PC is connected to the internet via a cable or Wi-Fi.**
 - Later in the procedure you will be required to enter your User Name and Password.
 - The CONSULT PC must be connected to the Internet.
 - If you do not know your User Name and Password, contact your Service Manager.
- **No DTCs stored.**
 - Use C-III plus to perform Self Diagnosis for all systems.
 - If there are any DTCs; diagnose, perform repairs, and erase DTCs **before** continuing.

1. Connect the plus Vehicle Interface (plus VI) to the vehicle.

- Make sure to use the correct VI for C-III plus (plus VI).

CAUTION: Make sure the plus VI is securely connected. If the plus VI connection is loose during reprogramming, the process will be interrupted and the control unit may be damaged.

2. Connect the AC Adapter to the CONSULT PC.

CAUTION: Be sure to connect the AC Adapter. If the CONSULT PC battery voltage drops during reprogramming, the process will be interrupted and the control unit may be damaged.

3. Connect the GR-8 to the vehicle battery:
 - Set the GR-8 to “Power Supply” mode.

CAUTION : DO NOT use a standard battery charger for Hybrid vehicles. Make sure to connect the GR-8 securely to the 12V battery. Make sure the battery voltage stays between 12.0V and 15.5V during reprogramming. If the battery voltage goes out of this range during reprogramming, the **control unit may be damaged.**

4. Turn OFF all external Bluetooth® devices (e.g., cell phones, printers, etc.) within range of the CONSULT PC and the VI.

CAUTION: Make sure to turn OFF all external Bluetooth® devices. If Bluetooth® signal waves are within range of the CONSULT PC and the VI during reprogramming, reprogramming may be interrupted and the **control unit may be damaged**.

5. Turn the ignition ON with the engine OFF.
 - The engine must not start or run during the reprogramming procedure.
6. Turn OFF all vehicle electrical loads such as exterior lights, interior lights, HVAC, blower, rear defogger, audio, NAVI, seat heater, steering wheel heater, etc.
7. Turn ON the CONSULT PC.
8. Select CONSULT-III plus (open C-III plus).

9. Wait for the plus VI to be recognized.
- Serial number will display when the plus VI is recognized.

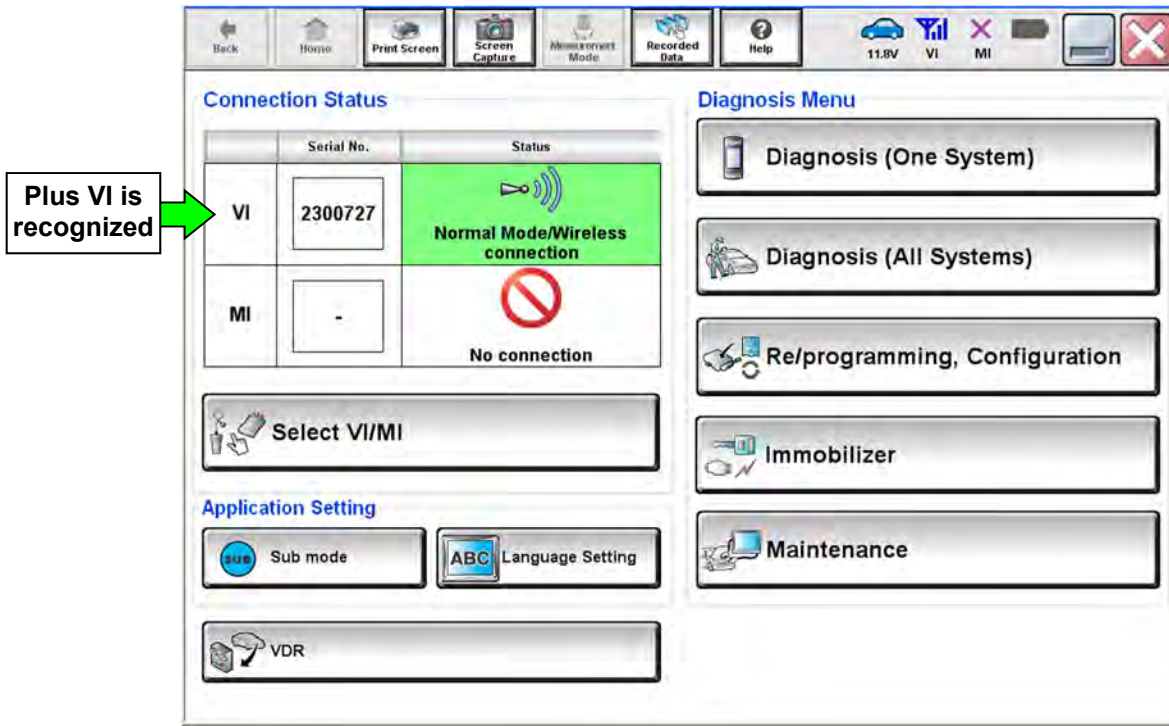


Figure 1

10. Select **Re/programming, Configuration**.

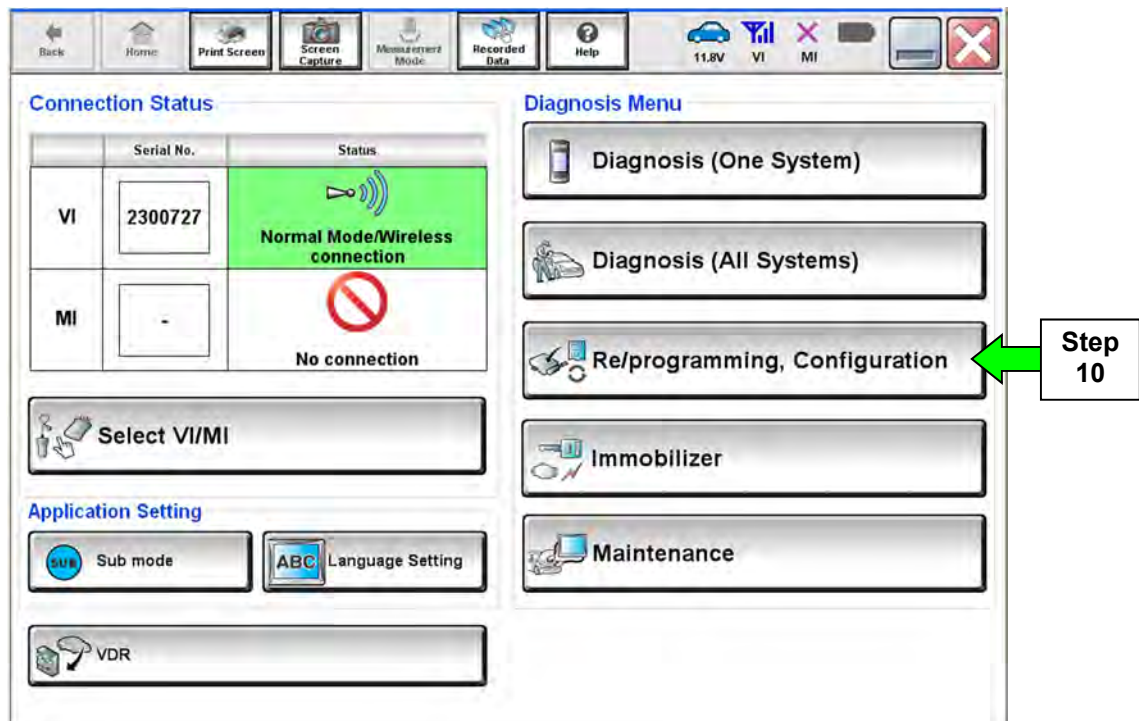


Figure 2

11. Use arrows (if needed) to view and read all precautions.
12. Check the box confirming the precautions have been read.
13. Select **Next**.

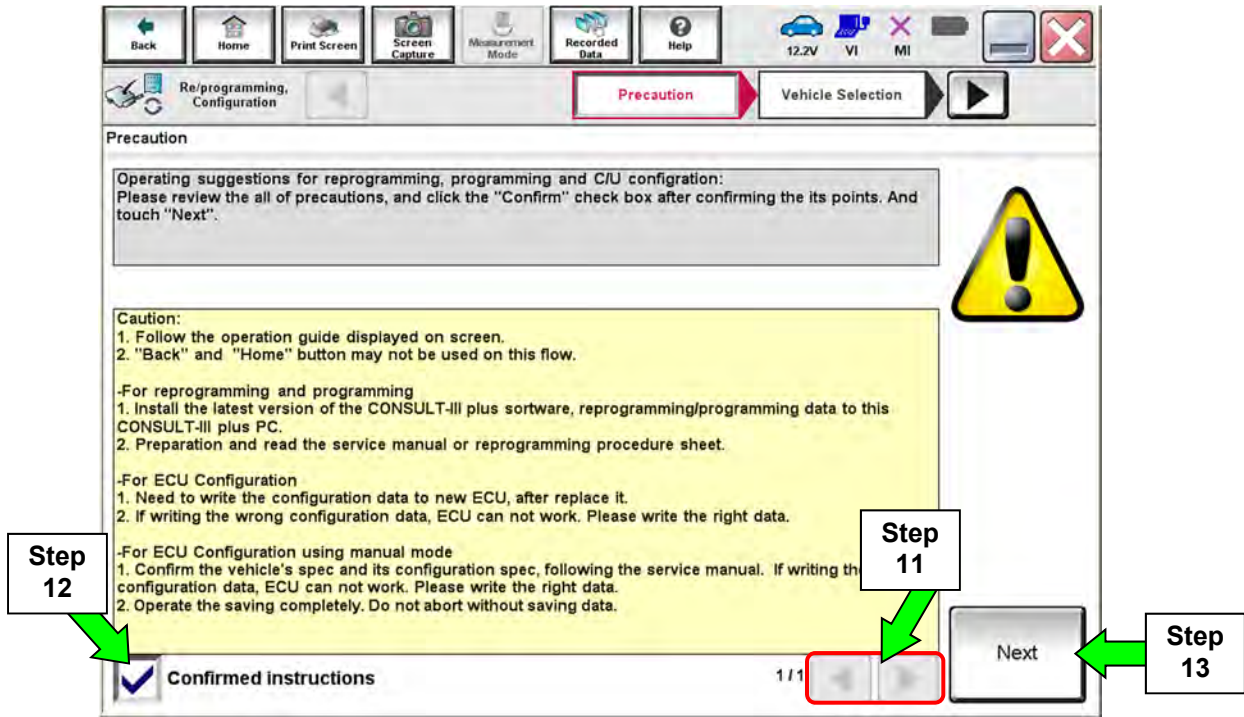


Figure 3

14. Select **Automatic Selection(VIN)**.

- If the screen in Figure 4 does not display, skip to step 15.

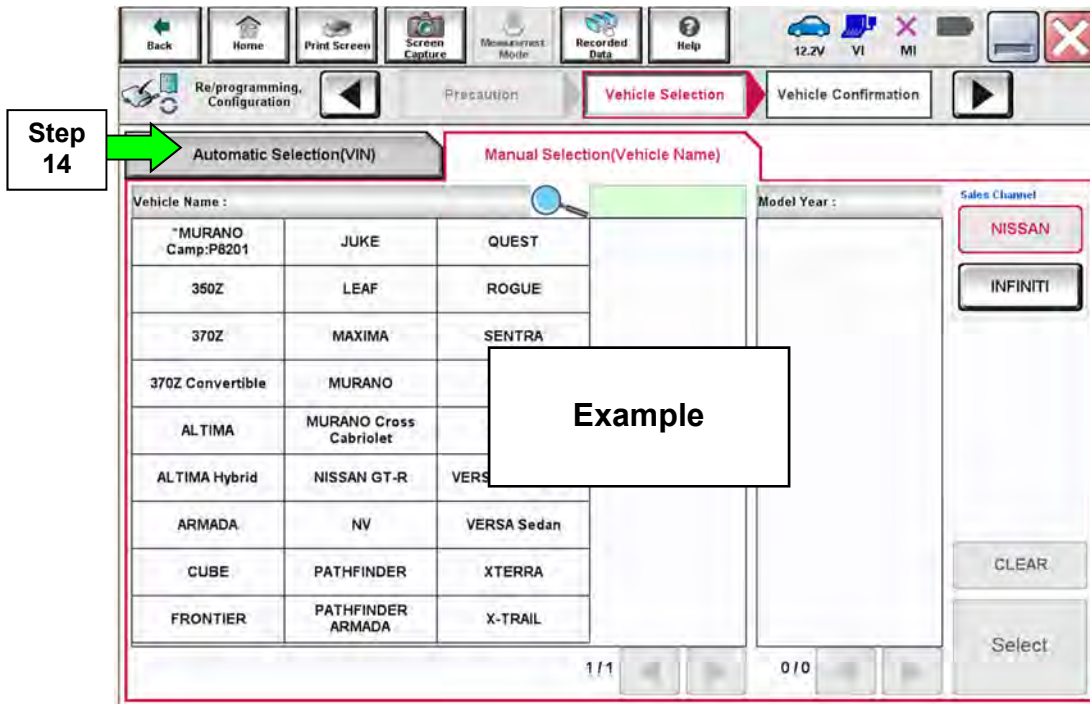


Figure 4

15. Make sure **VIN or Chassis #** matches the vehicle's VIN.

16. If the correct VIN is displayed, select **Confirm**.

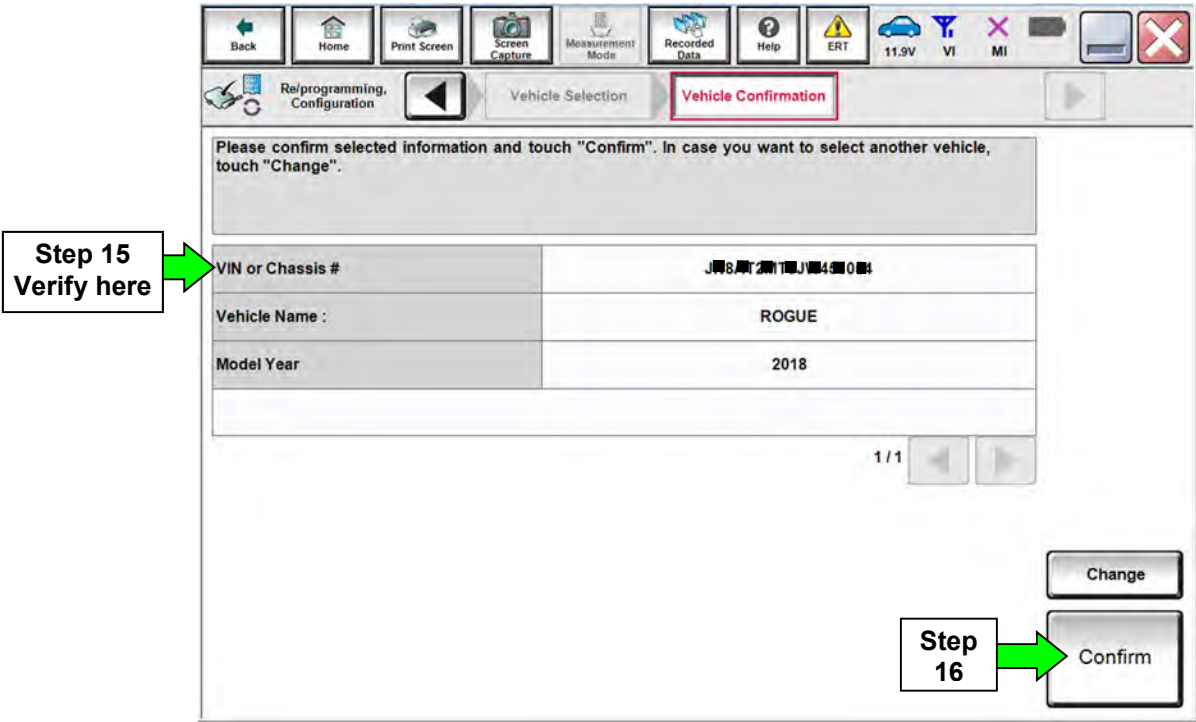


Figure 5

17. Select **Confirm**.

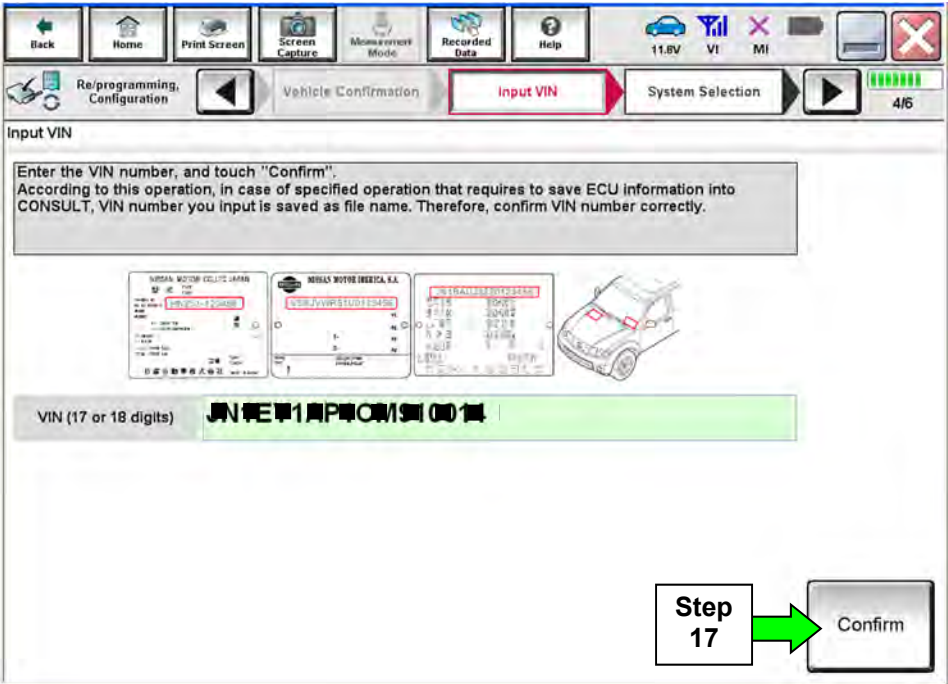


Figure 6

18. Select **LASER/RADAR**.

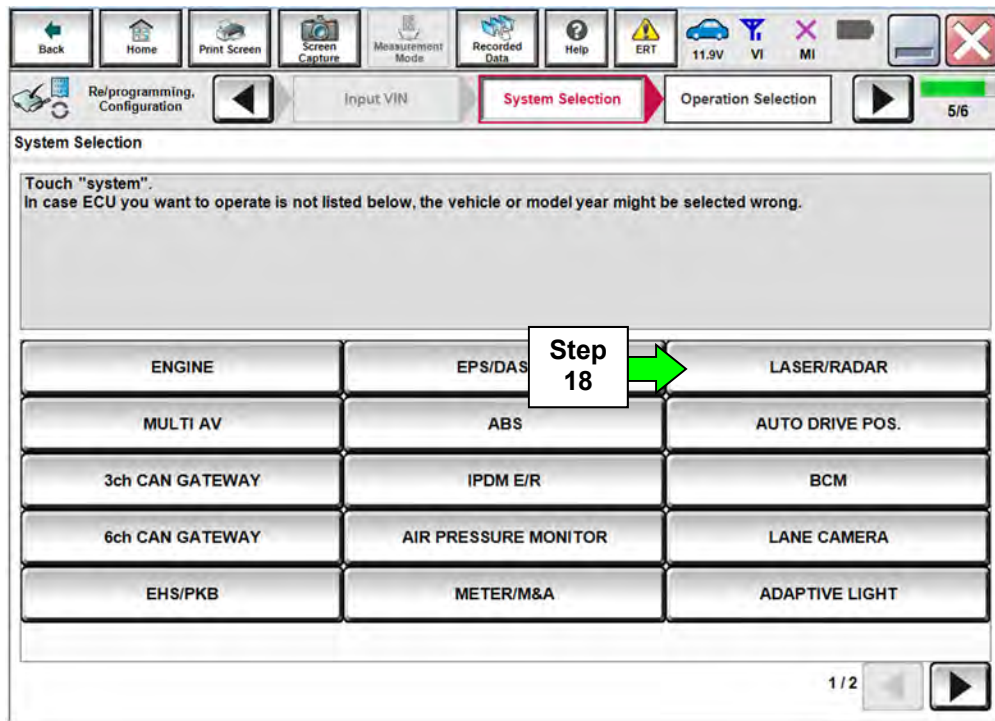


Figure 7

19. Select **Reprogramming**.

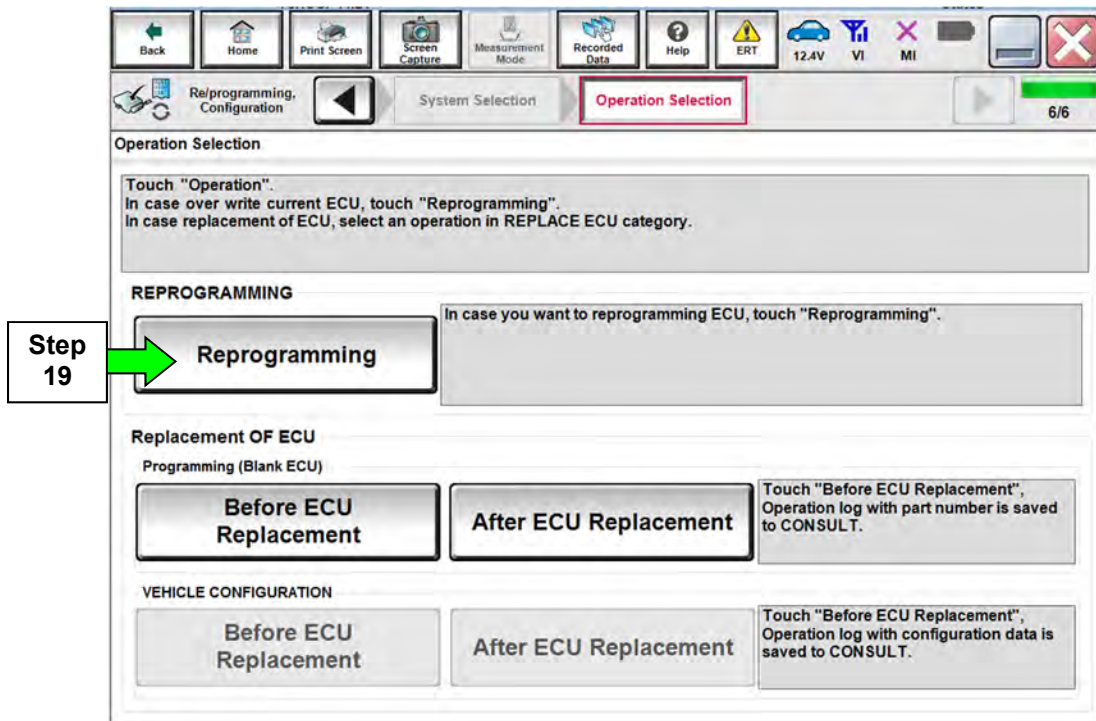


Figure 8

20. When you get to the screen shown in Figure 9, confirm that a reprogram or new control unit is available with the flow chart below.

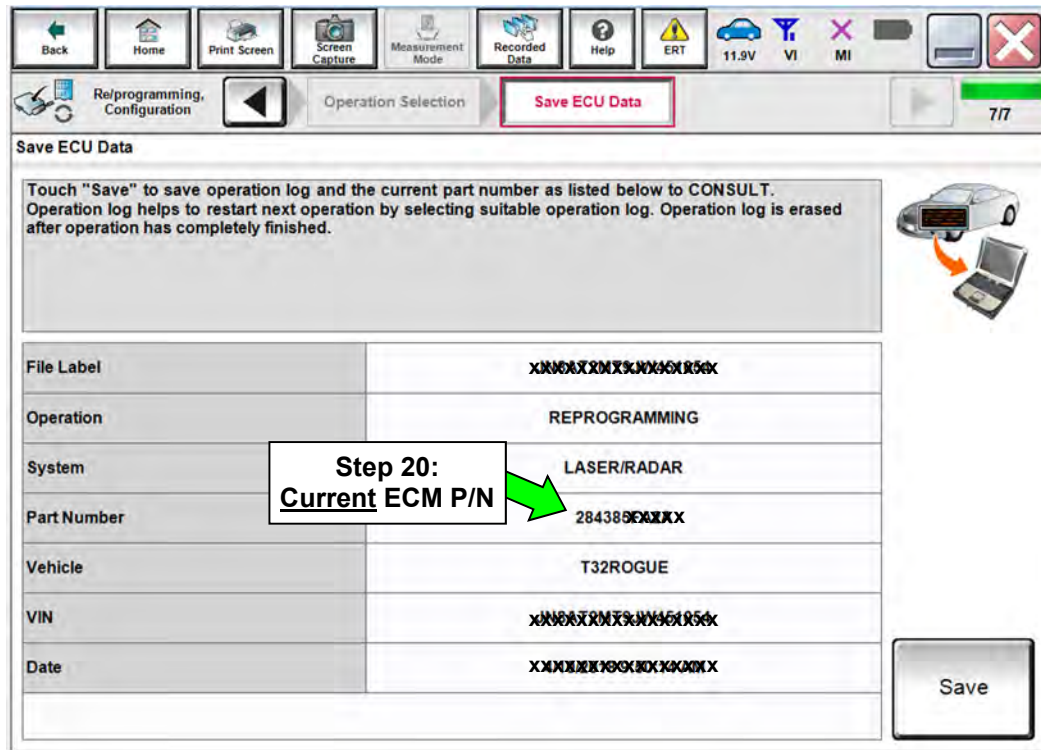
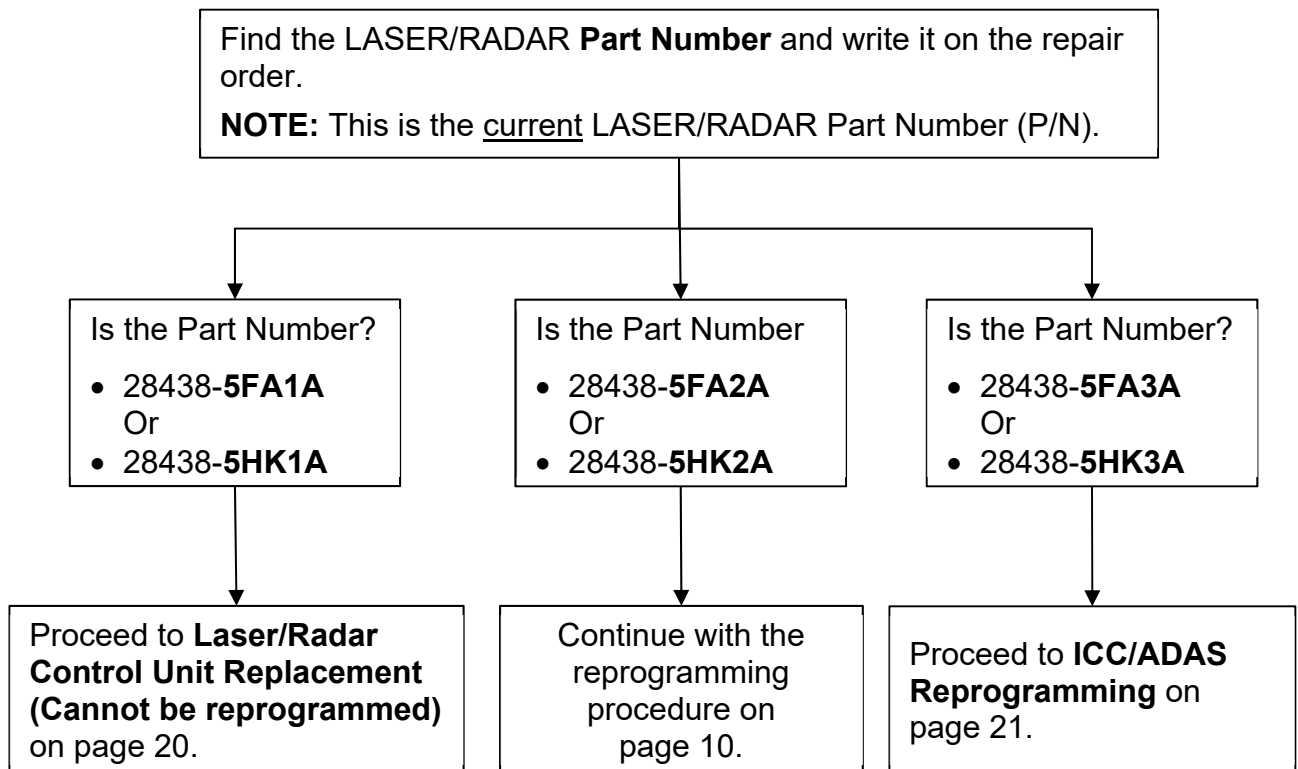


Figure 9



21. Select **Save**.

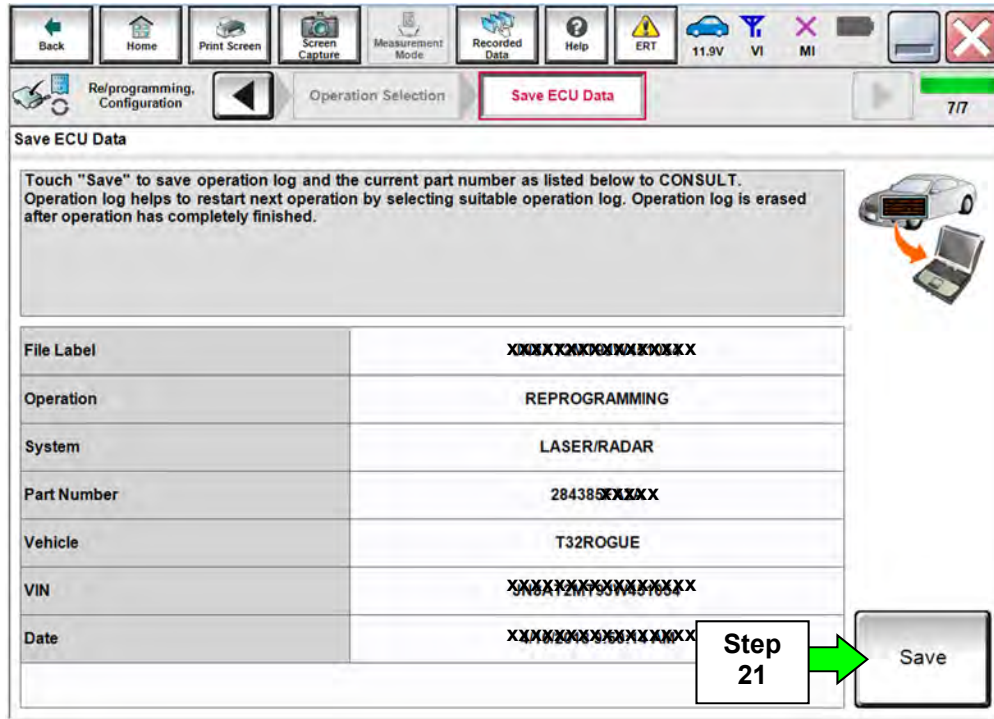


Figure 10

22. Use arrows (if needed) to view and read all precautions.

23. Check the box confirming the precautions have been read.

24. Select **Next**.

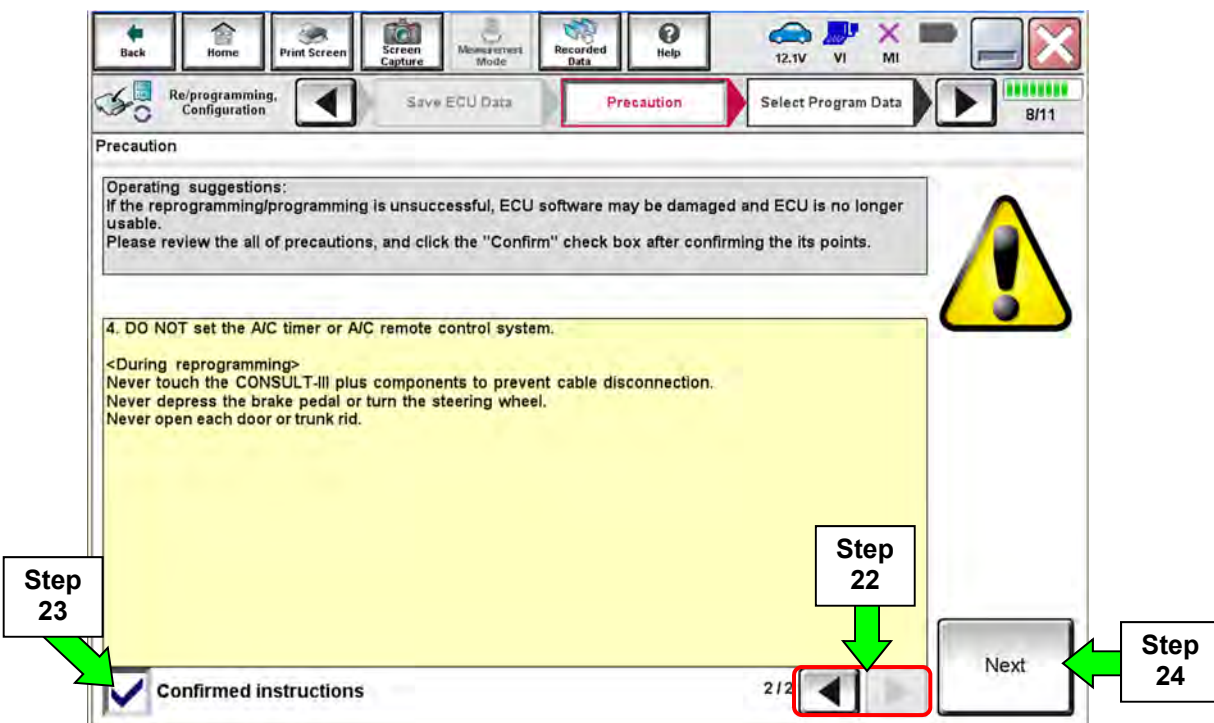


Figure 11

25. Read the **Current Part Number** and **Part Number After Reprogramming**. They should be different.

26. Select **Next**.

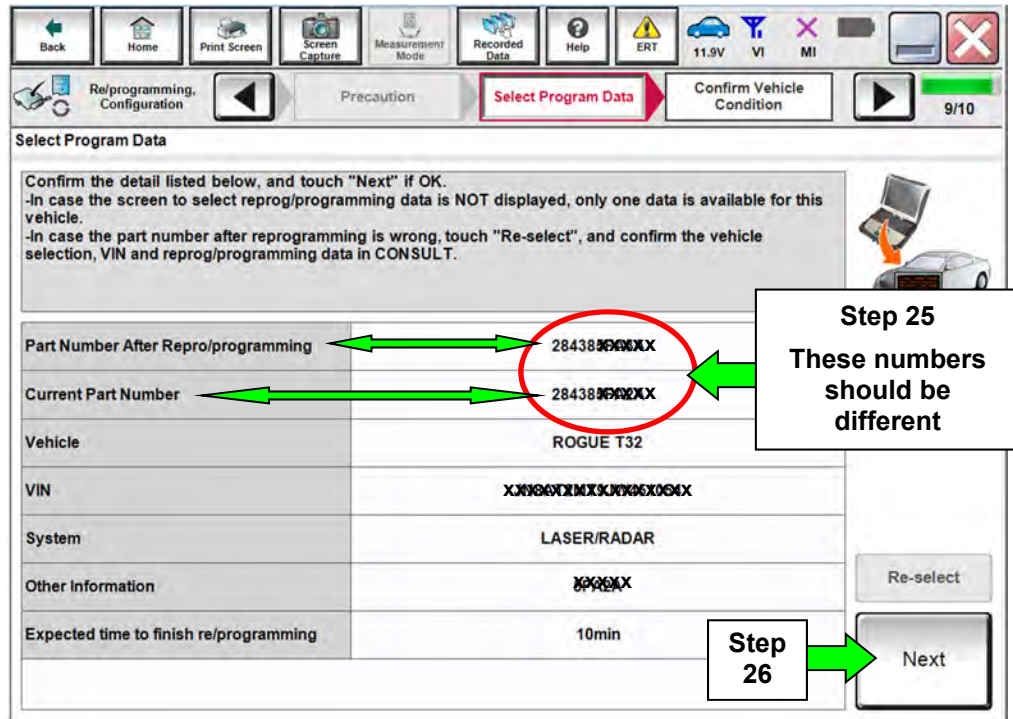


Figure 12

NOTE:

- In some cases, more than one new P/N for reprogramming is available.
 - If more than one new P/N is available, the screen in Figure 13 displays.
 - Select and use the reprogramming option that does **not** have the message “Caution! Use ONLY with NTBXX-XXX”.
- If you get this screen and it is blank (no reprogramming listed), it means there is no reprogramming available for the Laser/Radar control unit in this vehicle. Proceed to **ICC/ADAS Reprogramming**.

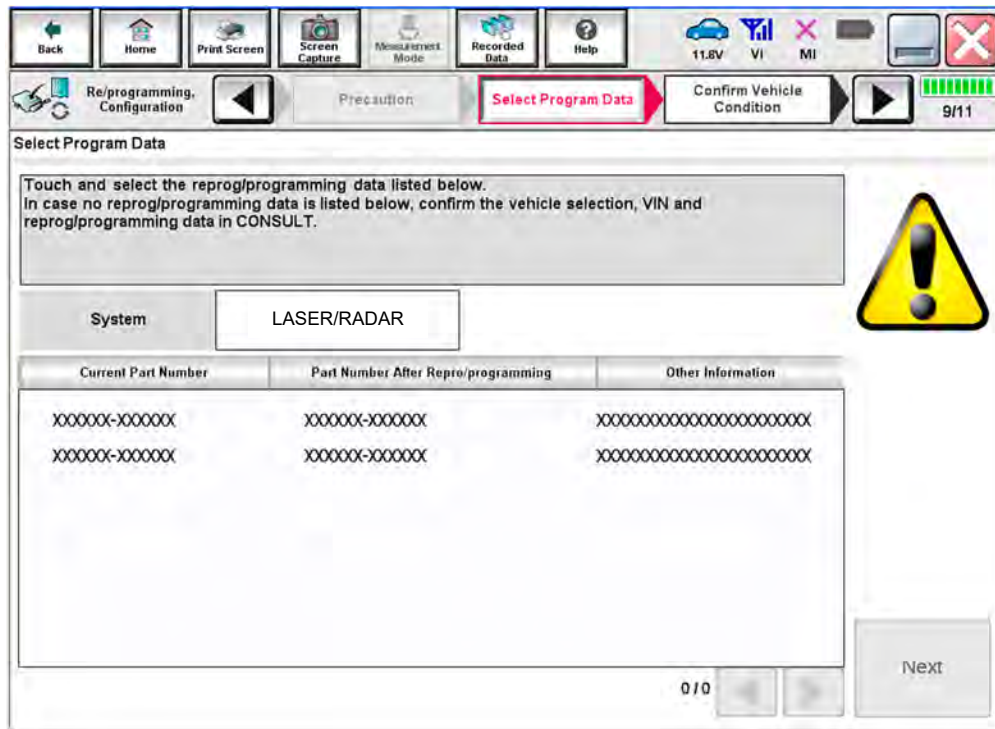


Figure 13

27. Make sure **OK** is highlighted **green** (battery voltage must be between **12.0 and 15.5 Volts**).

28. Select **Next**.

IMPORTANT: Battery voltage must stay between **12.0 and 15.5 Volts** during reprogramming or ECM reprogramming may be interrupted and ECM/TCM may be damaged.

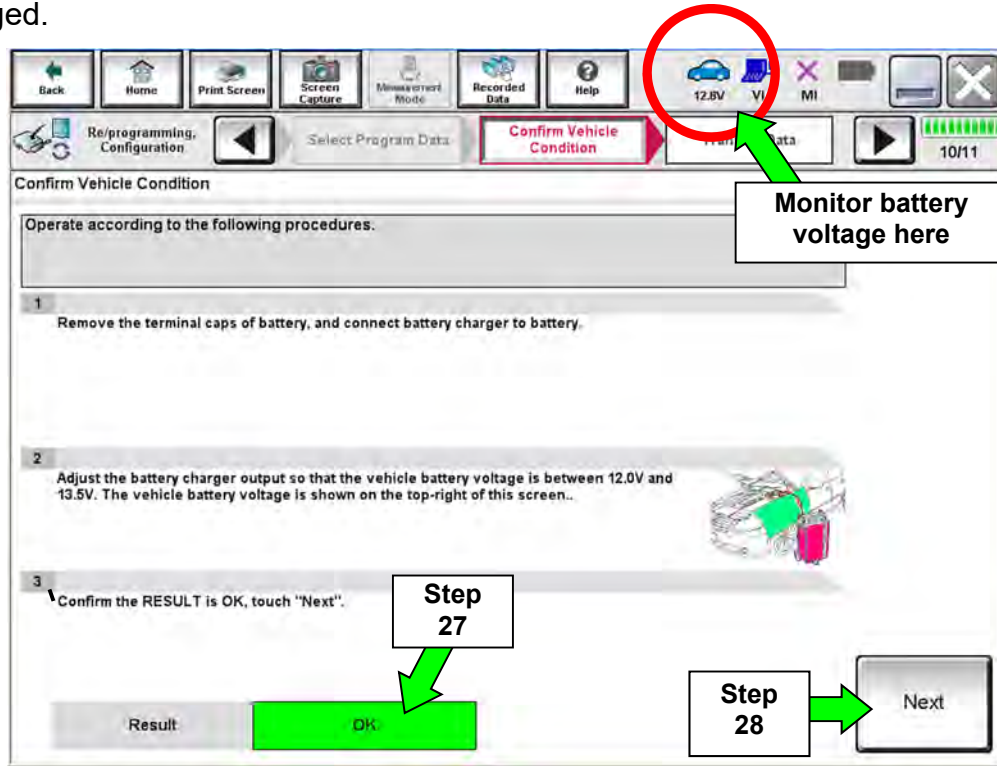


Figure 14

29. Confirm all Judgment items are OK, then select **Start**.

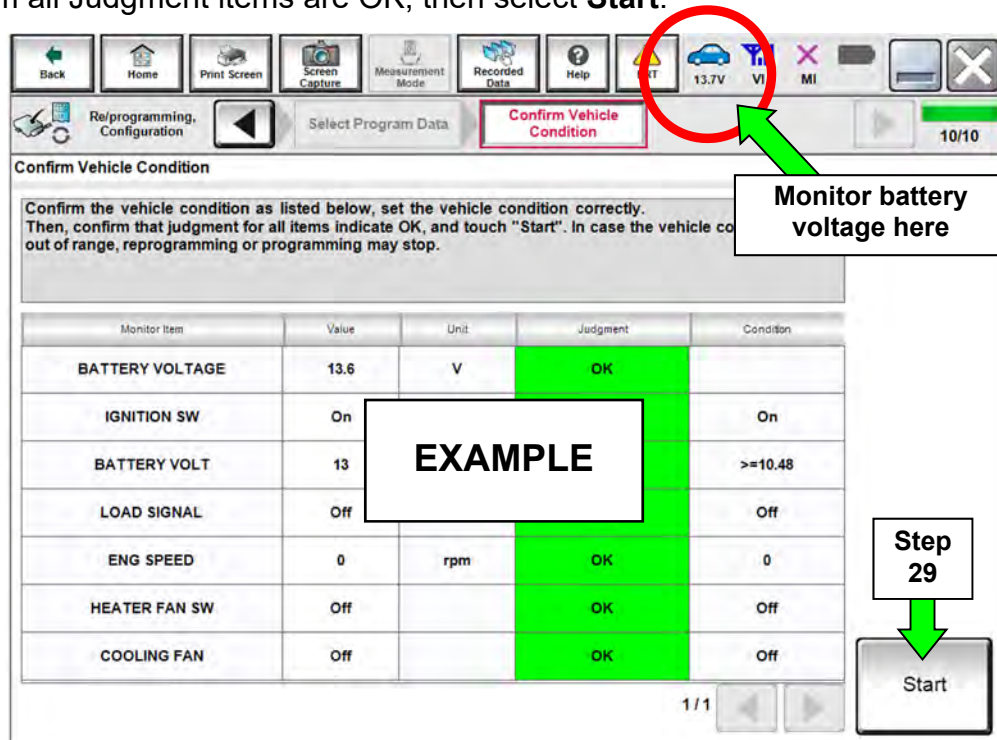


Figure 15

30. Select **USA/CANADA Dealers**.

31. Select **OK**.

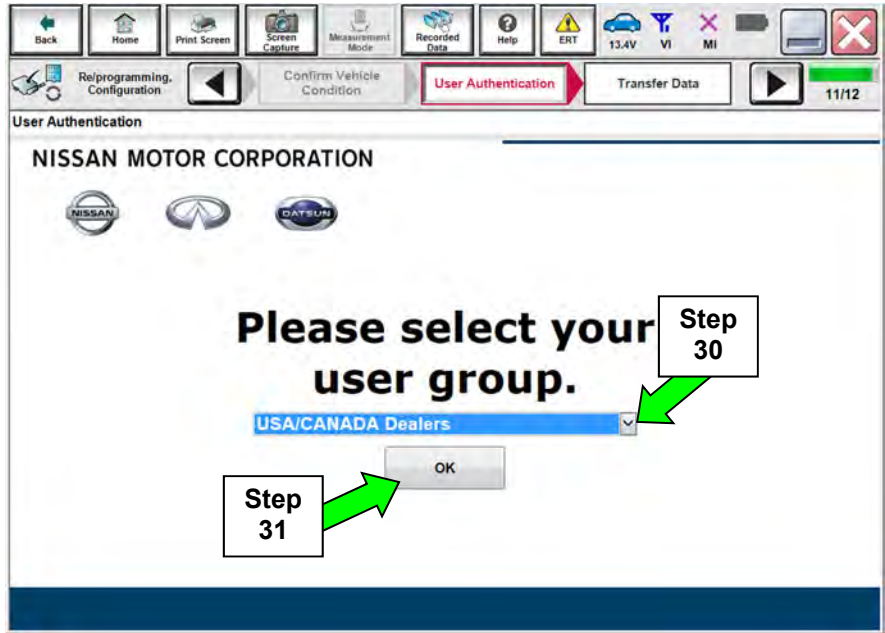


Figure 16

NOTE:

- The above screen may not display if the CONSULT PC has remained ON since the last reprogramming.
- If the CONSULT PC is not connected to the Internet, the screen in Figure 17 will display.

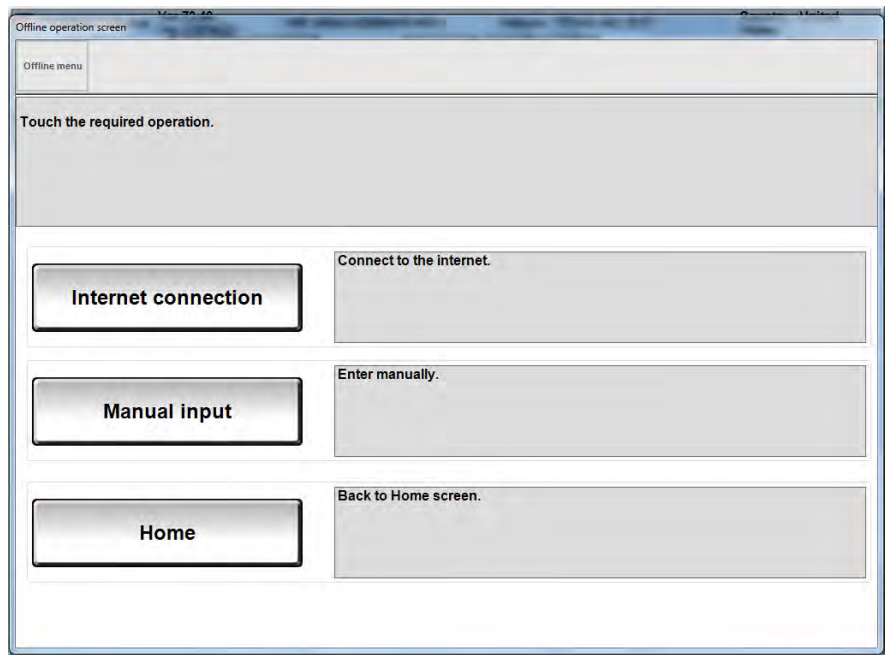


Figure 17

NOTE: In the next steps, the reprogramming process will begin when **Submit** is selected.

32. Enter your **Username** and **Password**.

- The CONSULT PC must be connected to the Internet via cable or Wi-Fi.
- If you do not know your User Name and Password, contact your Service Manager.

33. Select **Submit**.

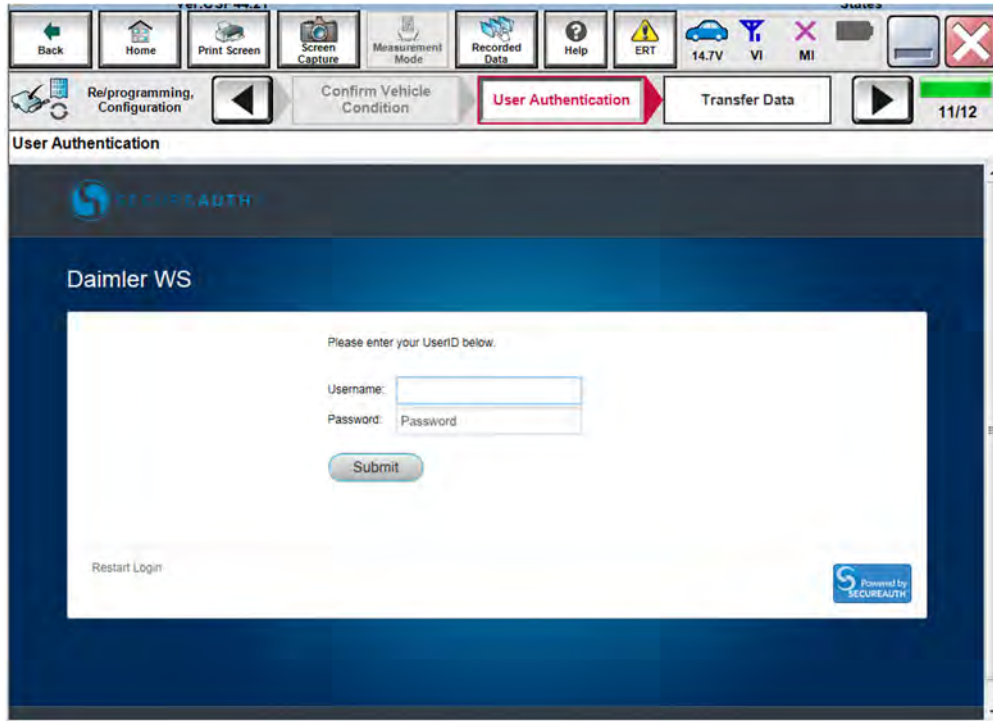


Figure 18

34. Wait for both progress bars to complete.

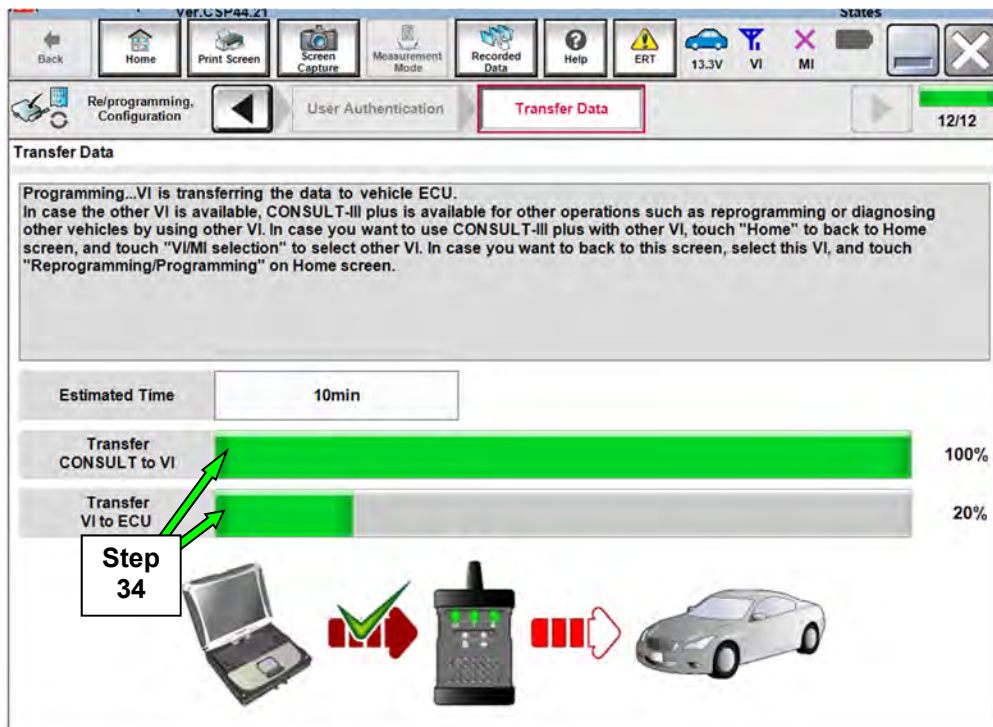


Figure 19

35. When the screen in Figure 20 displays, the reprogramming is complete.

NOTE: If the screen in Figure 20 does not display (indicating that reprogramming did not complete), refer to the information on the next page.

36. Disconnect the battery charger from the vehicle.

37. Select **Next**.

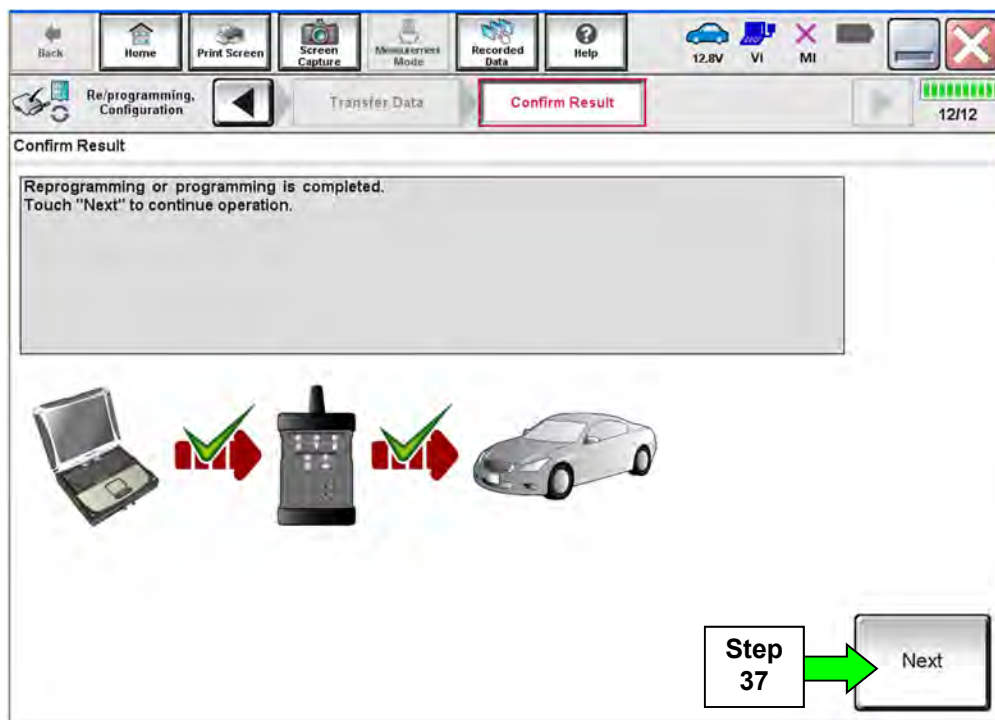


Figure 20

NOTE: Additional steps/operations are required before C-III plus will provide the final reprogramming confirmation report. Continue with the reprogramming procedure on page 18.

Laser/Radar Recovery

Do not disconnect plus VI or shut down Consult III plus if reprogramming does not complete.

If reprogramming does not complete and the “!?” icon displays as shown in Figure 21:

- Check battery voltage (12.0 - 15.5 V).
- Ignition is ON, engine OFF.
- External Bluetooth® devices are OFF.
- All electrical loads are OFF.
- **Select retry and follow the on screen instructions.**
- **“Retry” may not go through on first attempt and can be selected more than once.**

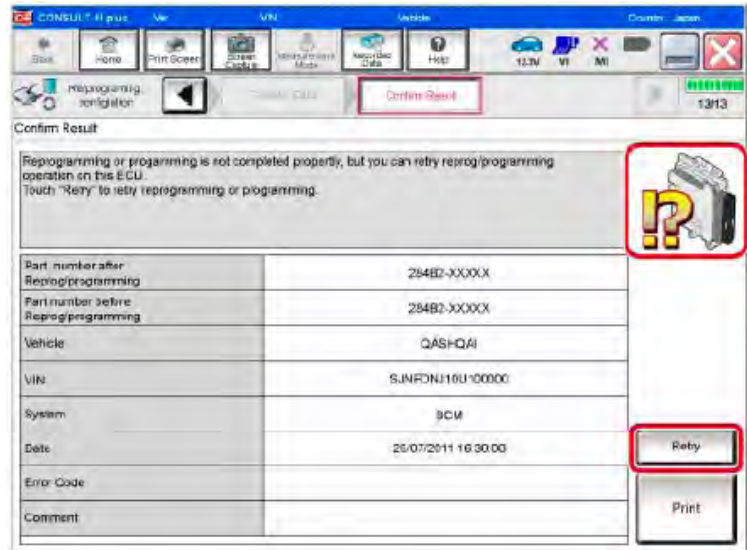


Figure 21

If reprogramming does not complete and the “X” icon displays as shown in Figure 22:

- Check battery voltage (12.0 - 15.5 V).
- CONSULT A/C adapter is plugged in.
- Ignition is ON, engine OFF.
- Transmission is in Park.
- All C-III plus / VI cables are securely connected.
- All C-III plus updates are installed.
- **Select Home, and restart the reprogram procedure from the beginning.**

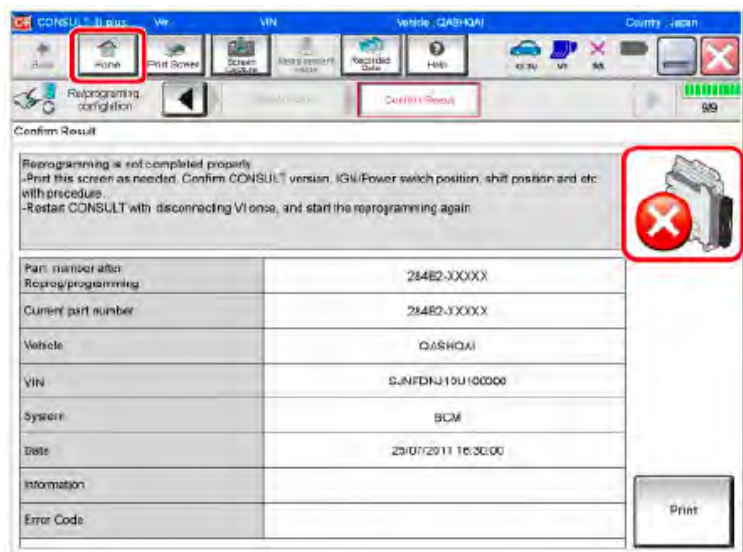


Figure 22

38. **Erase all DTCs** as follows:

- a. Turn the ignition OFF.
- b. Turn the Ignition ON.
- c. Wait for DTC erase to complete.

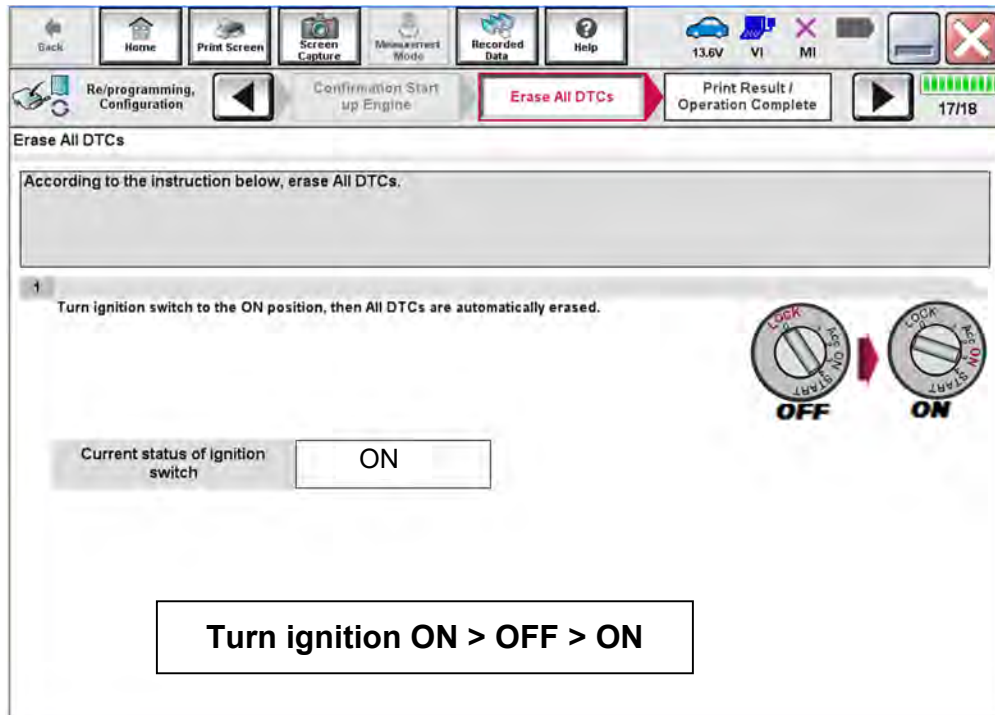


Figure 23

39. Verify the before and after part numbers are different.

40. Print a copy of this screen (Figure 24) and attach it to the repair order.

NOTE: If you cannot print the screen:

- a. Select Screen Capture.
 - b. Name the file.
 - c. Save the file in My Documents.
- A copy of the screen is now saved in the CONSULT PC. It can be retrieved and printed at a later time.

41. Select **Confirm**.

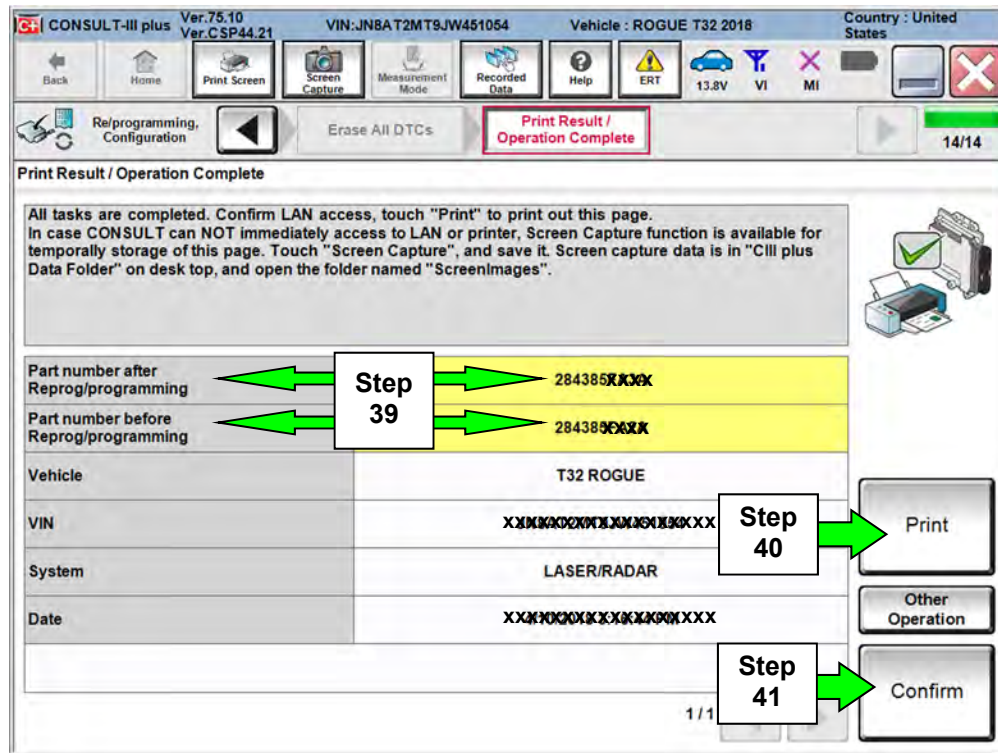


Figure 24

Proceed to **ICC/ADAS Reprogramming** on page 21.

Laser/Radar Control Unit Replacement (Cannot be reprogrammed)

42. If the Flow Chart on Page 2 indicates that a reprogram is not available for the Laser/Radar control unit.

And

- The current LASER/RADAR control unit part number is either:
 - 28438-5FA1A
 - OR**
 - 28438-5HK1A

Then

Replace it with a new LASER/RADAR control unit from the Parts Information.

- Refer to the ESM, section **CRUISE CONTROL & DRIVER ASSISTANCE > DRIVER ASSISTANCE SYSTEM > ICC**, for removal and reinstallation information.

Proceed to **ICC/ADAS Reprogramming** on the next page.

ICC/ADAS Reprogramming

IMPORTANT: LASER/RADAR control unit reprogramming or replacement must be performed first (if indicated by the flow chart on page 9) before proceeding.

43. Refer to steps 1-17 starting on page 3 to navigate to Figure 25.

44. Select **ICC/ADAS**.

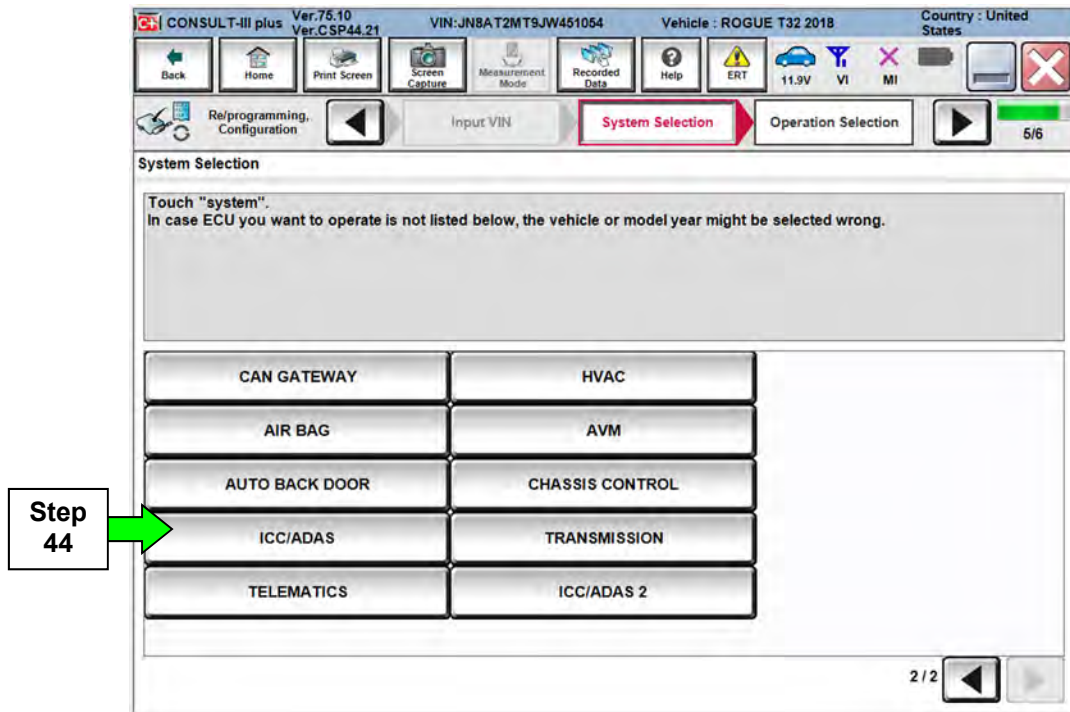


Figure 25

45. Select **Reprogramming**.

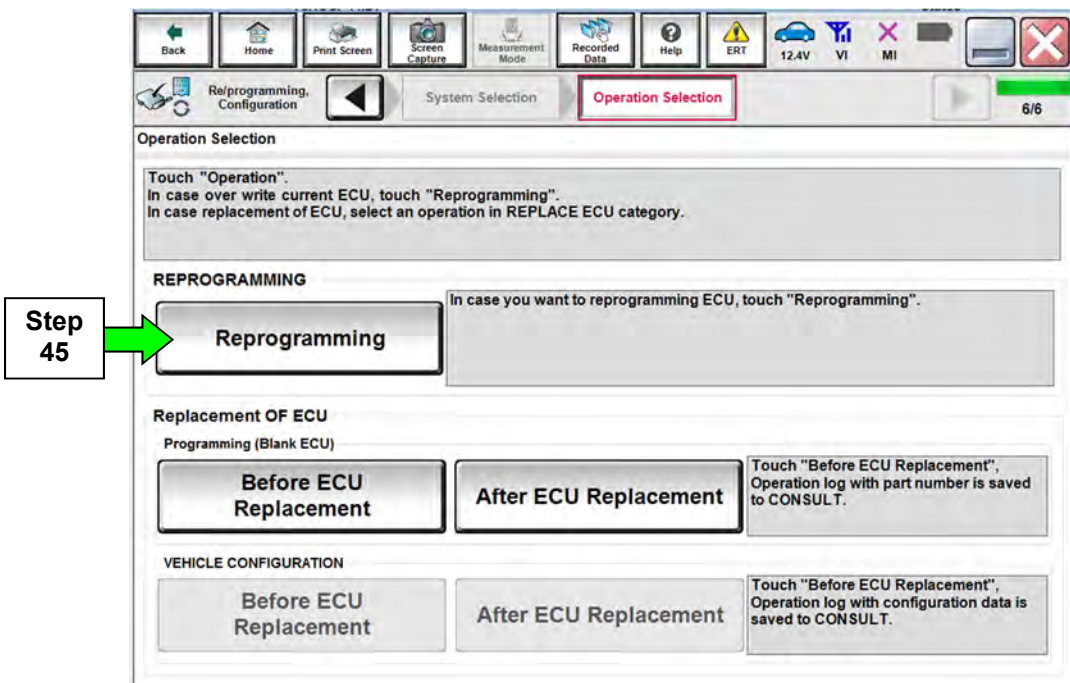


Figure 26

46. When you get to the screen shown in Figure 27, confirm that a reprogram is available as follows.

A. Find the ICC/ADAS **Part Number** and write it on the repair order.

NOTE: This is the current ICC/ADAS Part Number (P/N).

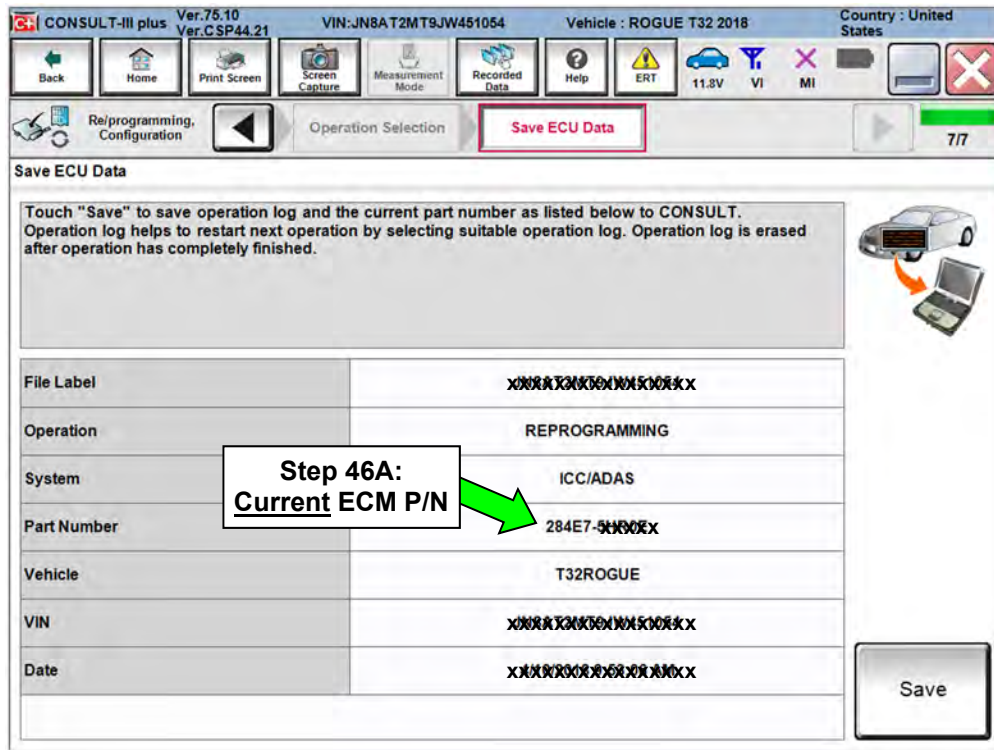


Figure 27

B. Compare the P/N you wrote down to the numbers in the **Current ICC/ADAS Part Number** column in **Table A**.

- If there is a match, continue with the reprogramming procedure.
- If there is not a match in Table A, proceed to step 56.

Table A

MODEL	YEAR	CURRENT ICC/ADAS PART NUMBER: 284E7-
Rogue and Rogue Hybrid	2017	6FL7B, 6FL8B
		6FL1B, 6FL2B
		7FF7B, 7FF8B
	2018	5HR0A, 5HR0C
		5HR9A, 5HR9B
		5HR0E, 5HR1E, 5HR3E, 5HR5E, 5HR6E
Rogue Sport	2017	6MA0B
	2018	6MA1B
		6MG0A, 6MG1A, 6MG2A

47. Follow the on-screen instructions to navigate C-III plus and reprogram the ICC/ADAS.
- Refer to steps 21-34 starting on page 10 for further details.

NOTE:

- In some cases, more than one new P/N for reprogramming is available.
 - If more than one new P/N is available, the screen in Figure 28 displays.
 - Select and use the reprogramming option that does **not** have the message “Caution! Use ONLY with NTBXX-XXX”.
- If you get this screen and it is blank (no reprogramming listed), it means there is no reprogramming available for this vehicle. Close C-III plus and refer back to ASIST for further diagnosis.

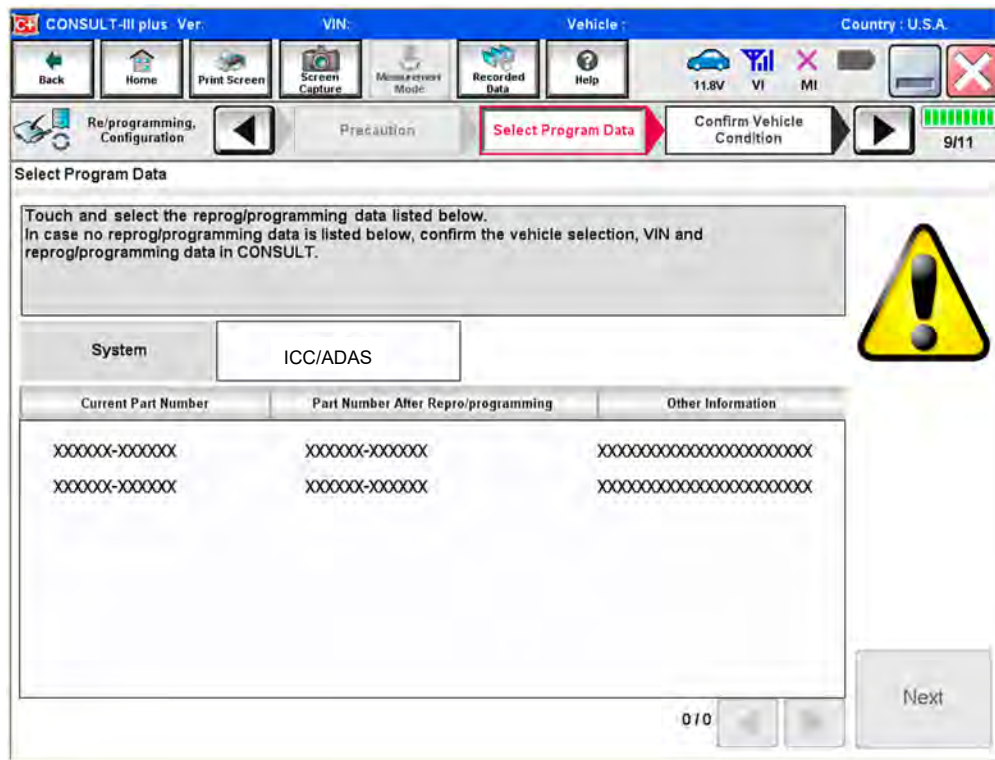


Figure 28

48. When the screen in Figure 29 displays, reprogramming is complete.

NOTE: If the screen in Figure 29 does not display (indicating that reprogramming did not complete), refer to ICC/ADAS recovery on the next page.

49. Disconnect the GR8 (battery charger) from the vehicle.

50. Select **Next**.

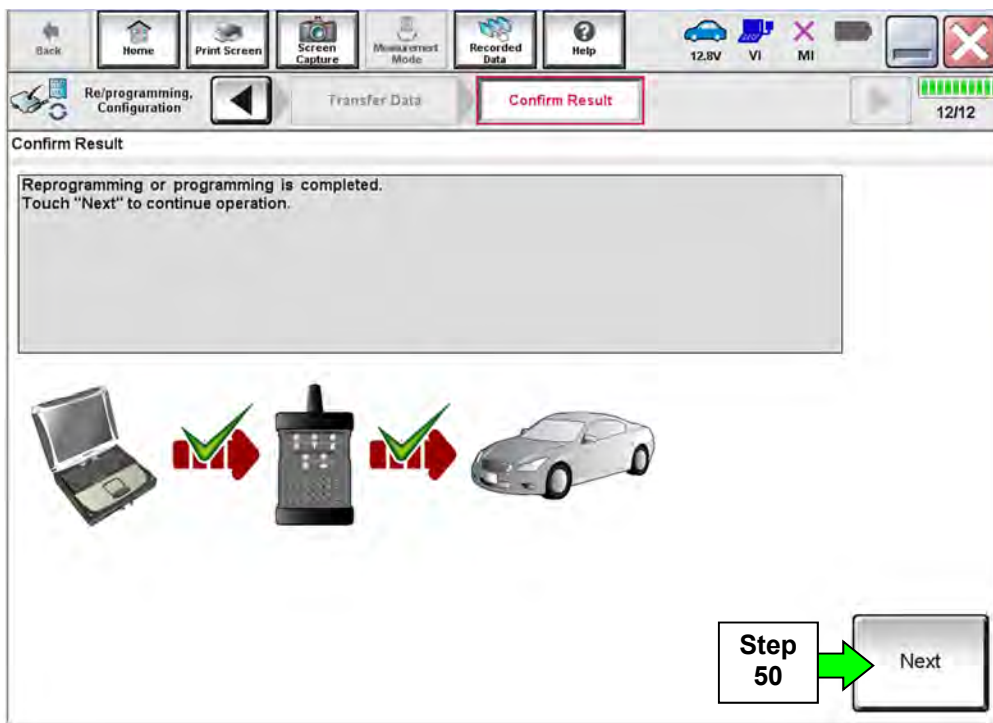


Figure 29

NOTE:

- In the next steps (page 26), you will perform DTC erase.
- This operation is required before C-III plus will provide the final reprogramming confirmation report.

ICC/ADAS Recovery

Do not disconnect plus VI or shut down Consult III plus if reprogramming does not complete.

If reprogramming does not complete and the “!?” icon displays as shown in Figure 30:

- Check battery voltage (12.0 - 15.5 V).
- Ignition is ON, engine OFF.
- External Bluetooth® devices are OFF.
- All electrical loads are OFF.
- **Select retry and follow the on screen instructions.**
- **“Retry” may not go through on first attempt and can be selected more than once.**

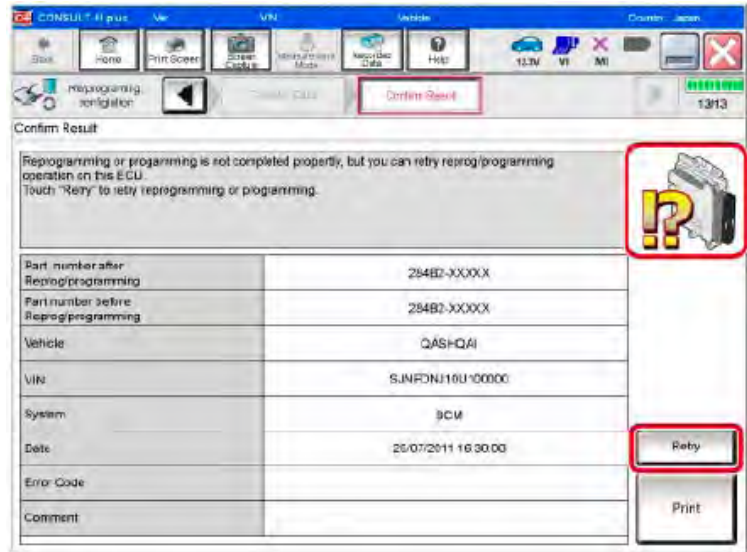


Figure 30

If reprogramming does not complete and the “X” icon displays as shown in Figure 31:

- Check battery voltage (12.0 - 15.5 V).
- CONSULT A/C adapter is plugged in.
- Ignition is ON, engine OFF.
- Transmission is in Park.
- All C-III plus / VI cables are securely connected.
- All C-III plus updates are installed.
- **Select Home, and restart the reprogram procedure from the beginning.**

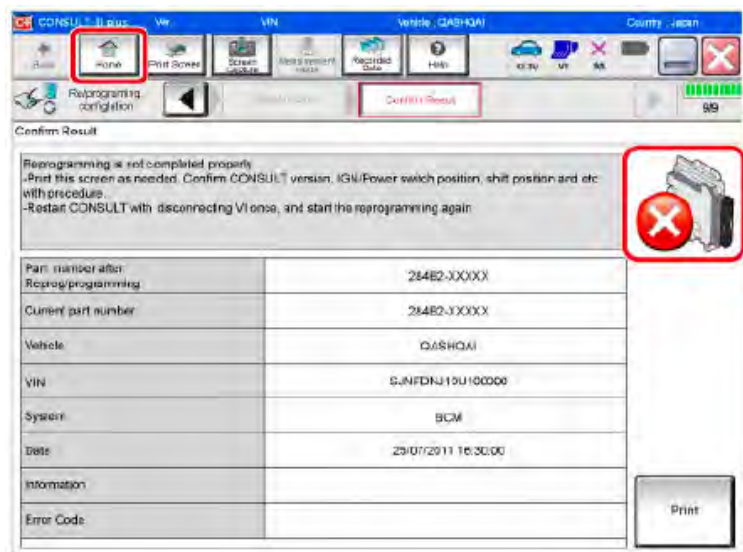


Figure 31

51. Follow the on on-screen instructions to erase DTCs.
 - If needed, refer to step 38 on page 18 for further details.
52. When the entire reprogramming process is complete, the screen in Figure 32 will display.
53. Verify the before and after part numbers are different.
54. Print a copy of this screen (Figure 32) and attach it to the repair order for warranty documentation.
55. Select **Confirm**.

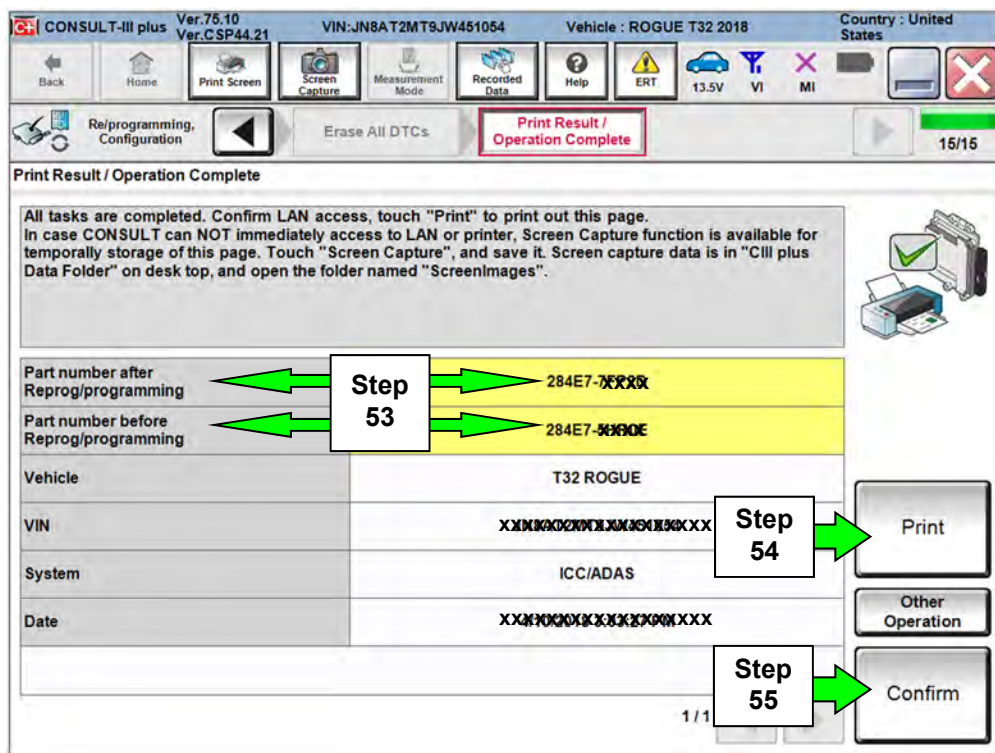


Figure 32

56. Close C-III plus.
57. Turn the ignition OFF.
58. Disconnect the plus VI from the vehicle.
59. Test drive the vehicle and make sure it operates correctly and the MIL is OFF.
 - If the MIL comes ON, go back to ASIST for further diagnostic information.
 - Diagnosis and repairs beyond ICC/ADAS or LASER/RADAR reprogramming or replacement are not covered by this bulletin.

PARTS INFORMATION

DESCRIPTION	PART NUMBER	QUANTITY
Laser/Radar Control Unit (1)	28438-5FA3A	1

(1) Do not replace this control unit unless directed to by step 20 on page 9.

CLAIMS INFORMATION

Submit a Primary Part (PP) type line claim using the following claims coding:

- Claim a combination of the following as needed.

DESCRIPTION	PFP	OP CODE	SYM	DIA	FRT
Reprogram Laser/Radar Control Unit	(1)	RX6FAA	ZE	32	0.4 (3)

OR, If part is replaced.

DESCRIPTION	PFP	OP CODE	SYM	DIA	FRT
Replace Laser/Radar Control Unit	(1)	RD45AA	ZE	32	(2,3)

And, on the same line

DESCRIPTION	PFP	OP CODE	SYM	DIA	FRT
Reprogram ICC/ADAS Control Unit	(1)	RX6EAA	ZE	32	0.4 (3)

(1) Refer to the electronic parts catalog and use the Distance Sensor (28438-*****) part number as the Primary Failed Part (PFP).

(2) Reference the current Nissan Warranty Flat Rate Manual and use the indicated FRT.

(3) FRT allows adequate time to access DTC codes. No other diagnostic procedures subsequently required. Do NOT claim any Diagnostic Op Codes with this claim.

