



HYUNDAI Technical Service Bulletin

GROUP
BODY ELECTRICAL

NUMBER
18-BE-009

DATE
AUGUST, 2018

MODEL(S)
SONATA (LF)

SUBJECT: OUTSIDE MIRROR ACTUATOR PART INFORMATION AND INSPECTION/REPLACEMENT PROCEDURE

Description: On certain Sonata (LF) vehicles, the left/right outside mirror may not actuate up/down and/or left/right. In these instances it is recommended to replace the outside mirror actuator only, not the entire outside mirror assembly.

This bulletin provides information on the availability of the outside mirror actuator as a separate part and the procedure of inspection/replacement.



Applicable Vehicles: Certain 2015-2018 Sonata (LF)

Warranty Information:

MODEL	OP. CODE	OPERATION	OP. TIME	CAUSAL PART	NATURE	CAUSE
Sonata (LF)	87612R00	Actuator Replacement - LH	Please see WEBLTS for current LTS time.	For Causal P/N: Refer to the Parts Information for the outside mirror door actuator P/N per applicable trim.	114	ZZ3
	87612R0R	Actuator Replacement - RH				
	87612R0B	Actuator Replacement - Both Sides				

Circulate To: General Manager, Service Manager, Parts Manager, Warranty Manager, Service Advisors, Technicians, Body Shop Manager, Fleet Repair

SUBJECT:

OUTSIDE MIRROR ACTUATOR PART INFORMATION AND INSPECTION/REPLACEMENT PROCEDURE

Parts Information:

PART NAME	FIGURE/PART NUMBER	QTY.
<p>O/S Mirror Actuator L/H</p> <p>(Note: L/H actuator applies to both the right and left outside mirrors.)</p>		
	87612-C2100 (With Memory Seat)	1
	87612-C2000 (Without Memory Seat)	1

Service Procedure:**Outside Mirror Actuator Inspection**

1. Verify the function of the outside mirror.

If the mirror is inoperative, remove the Delta cover and check the condition of the connector from the mirror to the door harness.

If the connector is fully engaged and the mirror will not actuate as designed, proceed to replacing the actuator.

**Outside Mirror Actuator Replacement****NOTICE**

Wear clean gloves when performing the outside mirror actuator replacement to avoid excessive smudges on the mirror glass.

1. Remove the three 10mm nuts holding the outside mirror.



SUBJECT:

**OUTSIDE MIRROR ACTUATOR PART INFORMATION AND
INSPECTION/REPLACEMENT PROCEDURE**

2. Remove the outside mirror assembly from the door.

Apply pressure on the inside end of the mirror until there is no more glass movement.



3. Wrap a clean towel around a small flathead screwdriver and carefully pry at the two corners of the mirror to remove it from the assembly.

⚠ CAUTION

Do not scratch or damage the mirror assembly.

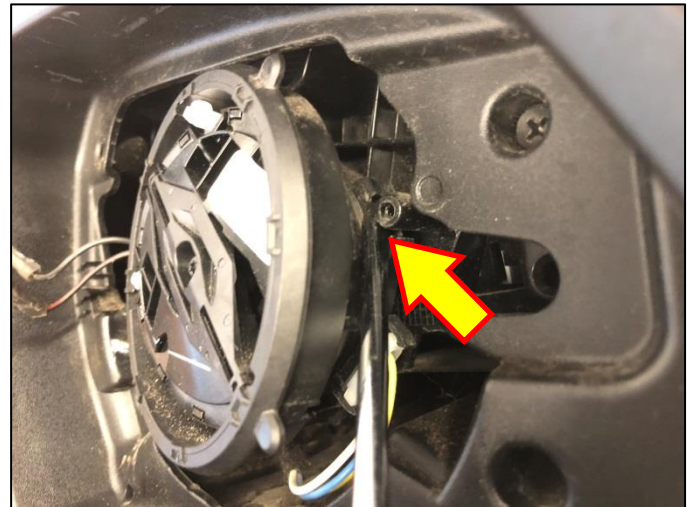
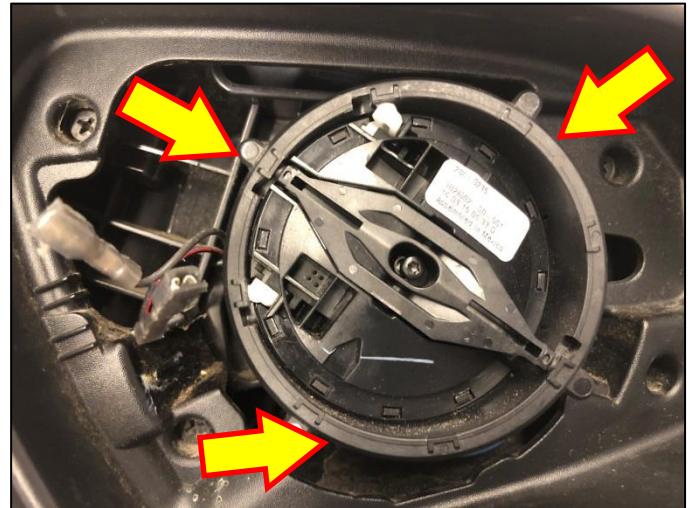


4. Use a small torx (T10) screwdriver to remove the screw holding the actuator to the base housing.



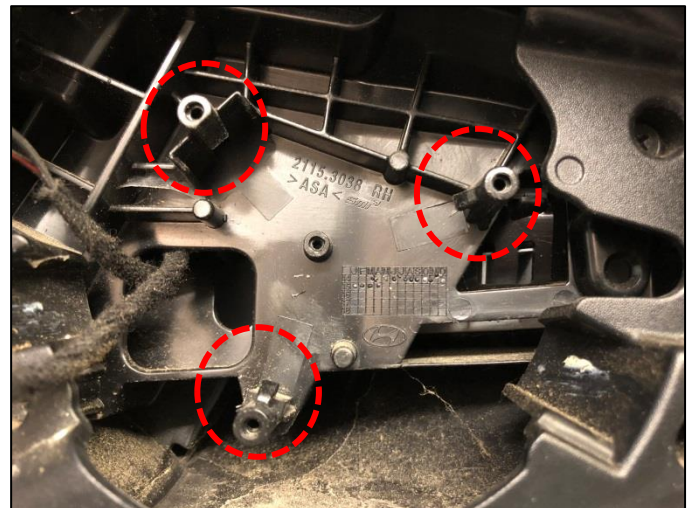
SUBJECT: OUTSIDE MIRROR ACTUATOR PART INFORMATION AND INSPECTION/REPLACEMENT PROCEDURE

5. Gently pry the actuator away from the three mounting tabs using a small flat head screw driver.

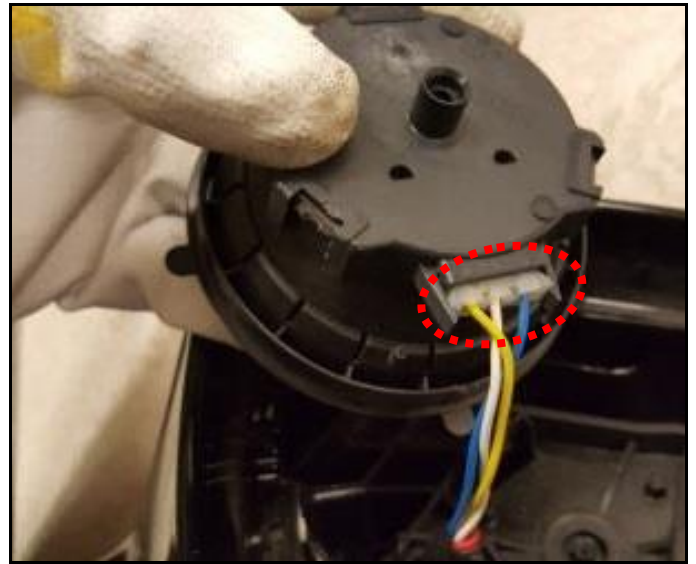


Actuator removed. Image on the right illustrates the position of the three mounting tabs.

Notice the mounting tabs have a hook which holds the actuator into place.



6. Disconnect the connector and remove the actuator assembly from the housing.



7. Install the new actuator in reverse order of removal.

NOTICE

When installing the actuator onto the outside mirror assembly, do not forcefully press it into place. When aligned correctly, it should snap into place with minimum force.

The actuator will not snap into place until it is aligned in the correct position. If necessary continue to rotate the actuator until the alignment is met, then press downward to lock it into place.



8. Confirm the outside mirror is operating as designed.