



Mack Models

Mack Model LR , MRU-TerraPro , AN-Anthem , CHU-Pinnacle, Axle back , CXU-Pinnacle, Axle forward , GU-Granite , TD-Titan

Engine family

Engine family MP7 , MP8 , MP10

Emission Standard

Emission Standard 2018 , OBD2017 , US17 , US16

** SOLUTION **

Title Mack Chassis - Particulate Matter (PM) Sensor Diagnostic Trouble Codes (DTC) Illuminating The Malfunction Indicator Lamp (MIL); [Tech Tip TT-014-2016 - US14+OBD16, US17+OBD16 And Newer Emissions, Common Model Year 2017 And Newer - To Be Used For EVERY Visit](#)

Cause The PM sensor can log several different codes that illuminate the MIL (Check Engine Lamp).

Solution **This Solution is relevant regardless of previous visits and sensor replacements. At this time, multiple sensor failures are not uncommon, regardless of how new the sensor is. The same procedure should be followed for every instance.**

As of 10 April 2018, the Tech Tip below is still current information. If diagnostics indicate that sensor replacement is required, instructions should be followed.

Overview

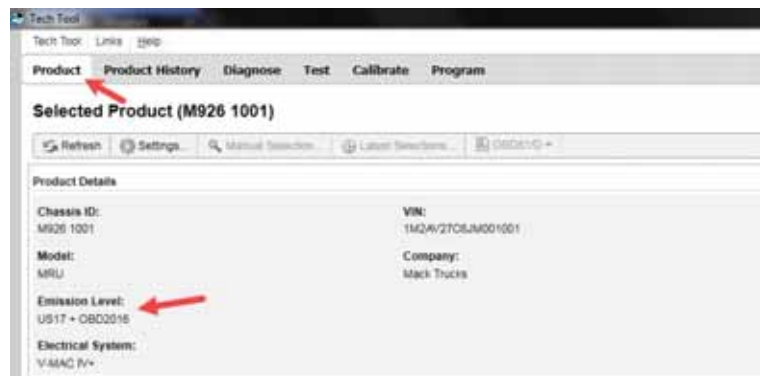
With the implementation of OBD16 Emissions controls (commonly model year 2017), a new sensor was required to monitor particulate matter (PM) levels in exhaust that has already passed through the Emissions Aftertreatment System. Excessive particulate levels at this stage can indicate a damaged or failed Diesel Particulate Filter (DPF). **The PM sensor's only purpose is monitoring and is not used in any EATS (regeneration and NOx conversion) functions. Codes set by the sensor will not affect performance or cause a Derate.**

Repair

If a chassis arrives with a derate warning active, the PM sensor is not the source of the derate and there is a separate existing issue.

Verify the chassis emissions level

- Details can be found in the Product Details box on the Product tab in PTT as seen below:



For US17+OBD16 (Common Rail Fuel System) Chassis setting DTCs P24DA or P1031 ONLY:

- Software improvements have been released to address this code. Refer to CBR Solution [K00527512](#).

For US17+OBD16 Chassis setting any other codes for the PM Sensor, Proceed with instructions in [Tech Tip TT-014-2016](#).

For US14+OBD16 (Commonly 2017 model year): Proceed with instructions in [Tech Tip TT-014-2016](#).

NOTE: Prior to installing a new sensor, gently shake the sensor and ensure it does not rattle. If noise is heard, another sensor should be used.

NA_Sister solutions	K00527512 , K14122525 , K47547856
Campaign code	FSB284-067
Solution visibility	Dealer distribution
Function(s)/component(s) affected	
Function affected	Documentation , TT , DPF , CV electronic control unit , 1 1 0 EMS , EECU , Diagnostic tool
Function Group	
Function Group	2549 miscellaneous , 258 emissions after-treatment
Customer effect	
Main customer effect	soot , regeneration , calibration/programming/pairing/missing operation , diagnostics /methodology , efficiency/abnormal behavior , fault code/display , visual appearance
Lights/Messages on information display	message on display , - - - - , - - / - -

Fault code(s)

OBD 2013 Diagnostic Trouble Codes	P1031 , P1032 , P1033 , P1034 , P249C , P24AE , P24AF , P24B0 , P24B1 , P24B3 , P24B4 , P24B5 , P24B7 , P24D0 , P24D1 , P24DA , P24FC , P2AB0
-----------------------------------	---

Conditions

Vehicle operating mode	when driving , when stationary
------------------------	--------------------------------

Frequency of occurrence of problem	always
------------------------------------	--------

Administration

Author	RU4469V
--------	---------

Dealer ID	RU4469V
-----------	---------

Last modified by	RU4469V
------------------	---------

Creation date	19-04-2018 16:04
---------------	------------------

Date of last update	18-09-2018 17:09
---------------------	------------------

Review date	15-04-2018 00:04
-------------	------------------

Status	Published
--------	-----------

Average score	5
---------------	---

Number of scores	1
------------------	---
