



KNOCKING NOISE FROM THE ENGINE COMPARTMENT

MODEL

F48 (X1)

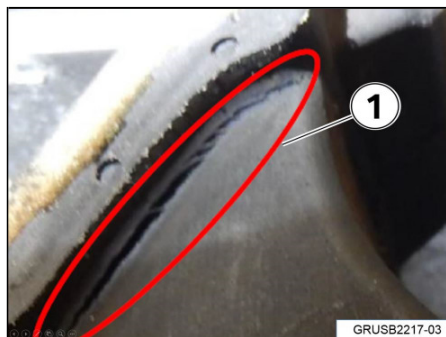
SITUATION

There is a knocking noise coming from the engine compartment or the engine shakes during:

- Engine start
- When driving off from a stop
- When applying brakes

CAUSE

Damage to the right side engine mount. The damage may be subtle (1st picture) or obvious (2nd picture).



CORRECTION

Inspect the right engine mount and replace if necessary.

PROCEDURE

For conditions that are similar to the situation described:

1. Inspect the engine mount on the right side of the engine.

Is the vulcanization on the mount cracked, damaged or completely separated?

YES- Replace the engine mount. Continue to step 2.

NO – Continue diagnosis with ISTA.

2. Check the I-Level of the vehicle's programming

Is the I-level F056-14-07-50X or lower?

YES- Reprogram the vehicle with ISTA/P 3.61.0 or ISTA Next 4.04.2 or higher.

NO – Repair is complete. No reprogramming is necessary.

Note that ISTA/P will automatically reprogram and code all programmable control modules that do not have the latest software.

Always connect a BMW approved battery charger/power supply (SI B04 23 10).

For information on programming and coding with ISTA/P, refer to CenterNet / TIS / Technical Documentation / Diagnostics and Programming / Programming Documentation.

PARTS INFORMATION

Refer to EPC.

WARRANTY INFORMATION

Covered under the terms of the BMW New Vehicle Limited Warranty for Passenger Cars and Light Trucks.

Defect Code:	2211010100	
Labor Operation:	Labor Allowance:	Description:
22 11 001*	Refer to KSD	Replacing the right engine mount
00 00 556	Refer to KSD2	Performing "vehicle test" (with vehicle diagnosis system – checking faults) (Plus work)
And:		

61 21 528	Refer to KSD2	Connect an approved battery charger/power supply(indicated in KSD2 as "Charging battery")
And:		
61 00 730	Refer to KSD2	Programming/encoding control unit(s) (if necessary)

Labor operation code 22 11 001 is a Main labor operation. If you are using a Main labor code for another repair, use the Plus code labor operation 22 11 501 instead.

[Copyright ©2017 BMW of North America, Inc.]