

Pre-Collision System (PCS) Customizable Features for Off-Road/Special Driving Conditions

Service Category Brake

Section Brake Control/Dynamic Control System

Market USA

Toyota Supports
 ASE Certification 

Applicability

YEAR(S)	MODEL(S)	ADDITIONAL INFORMATION
2016 - 2018	Land Cruiser	
2018	Sequoia, Tacoma, Tundra	

Introduction

All 2016 – 2018 model year Land Cruiser and 2018 model year Sequoia, Tacoma, and Tundra vehicles are equipped with a Pre-Collision System (PCS), also known as Automatic Emergency Braking (AEB) as part of Toyota Safety Sense.

The Pre-Collision System (PCS) defaults its operating mode to ON after each ignition (IG) cycle. In some driving conditions, such as extended off-road use, driving with tire chains in adverse conditions, towing another vehicle, or when your vehicle is being towed, drivers should operate the vehicle with PCS OFF. Drivers may also prefer to maintain this setting after each IG cycle. If this functionality is requested, follow the procedure in this Service Bulletin to disable the PCS mode reset after each IG cycle.

Warranty Information

OP CODE	DESCRIPTION	TIME	OFF	T1	T2
N/A	Not Applicable to Warranty	–	–	–	–

Pre-Collision System (PCS) Customizable Features for Off-Road/Special Driving Conditions

Required Tools & Equipment

REQUIRED EQUIPMENT	SUPPLIER	PART NUMBER	QTY
Techstream 2.0*	ADE	TS2UNIT	1
Techstream Lite		TSLITEPDLR01	
Techstream Lite (Green Cable)		TSLP2DLR01	

* Essential SST.

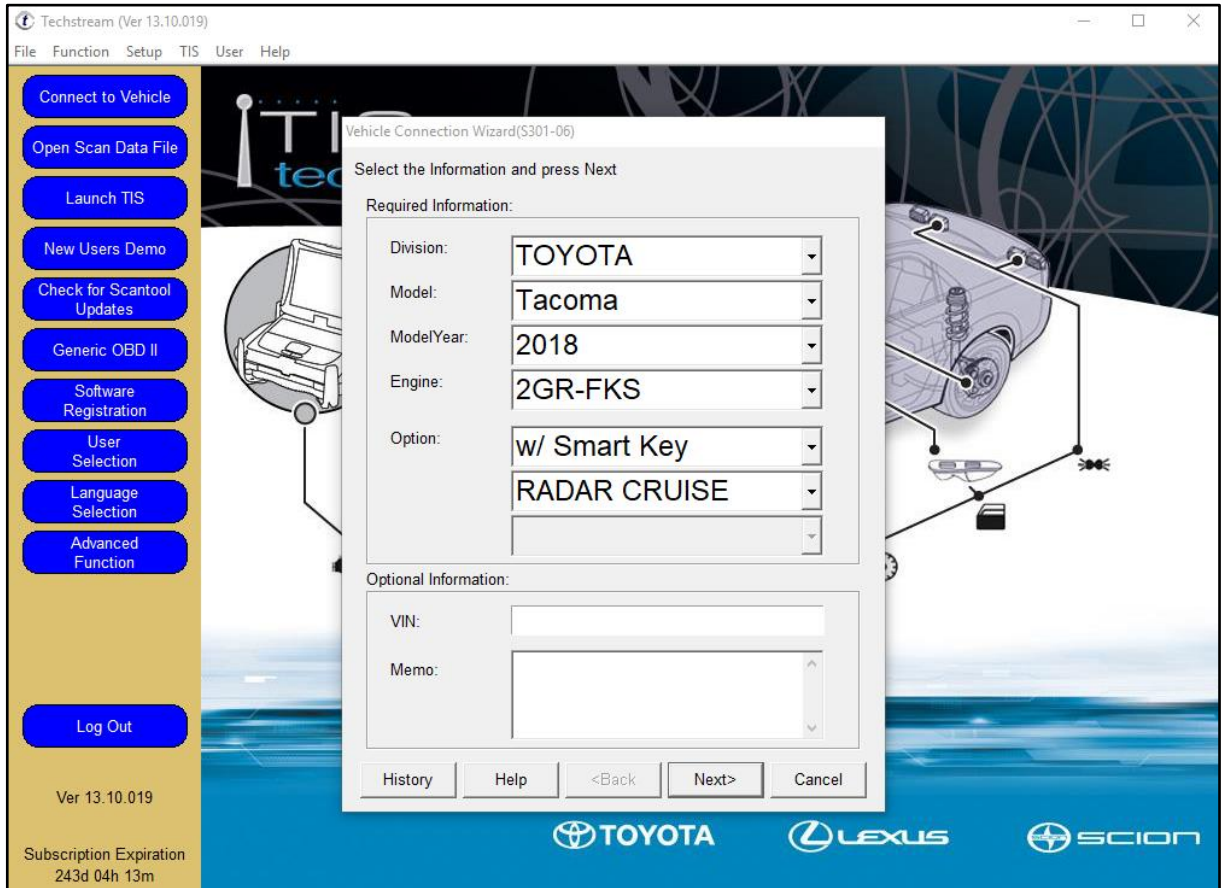
NOTE

- Only ONE of the Techstream units listed above is required.
- Software version 13.10.019 or later is required.
- Additional Techstream units may be ordered by calling Approved Dealer Equipment (ADE) at 1-800-368-6787.

Pre-Collision System Customization Procedure

1. Connect Techstream to the vehicle.

Figure 1.



Pre-Collision System (PCS) Customizable Features for Off-Road/Special Driving Conditions

Pre-Collision System Customization Procedure (continued)

2. Select Customize Setting.

Figure 2.

System Selection Menu
 Select desired system and then press the arrow button to access the ECU.

- System** (Yellow) Yellow = ECU status unknown.
- System** (White) White = ECU communication OK.
- *System** (White w/Asterisk) White w/Asterisk = ECU not supported or not responding.
- *System** (Light Blue w/Asterisk) Light Blue w/Asterisk = ECU communication OK in past times but not responding now.

All ECUs | Powertrain | Chassis | Body Electrical

Engine	Transmission	Radar Cruise1	Radar Cruise2	Four Wheel Drive	ABS/VSC/TRAC
Tire Pressure Monitor	Front Recognition Camera	LKA/LDA	Air Conditioner	SRS Airbag	Pre-Collision 2
Main Body	*Accessory Gateway	Central Gateway	D-Door Motor	P-Door Motor	Master Switch
Sliding Roof	Combination Meter	Intuitive P/A	Smart Key	Power Source Control	Occupant Detection
*Remote Engine Starter	Starting Control	Navigation System	Blind Spot Monitor Master	Blind Spot Monitor Slave	

Buttons: Health Check, **Customize Setting**, ECU Reprogramming, CAN Bus Check, TIS Function, Read Data Function, TIS Search, Print, Main Menu.

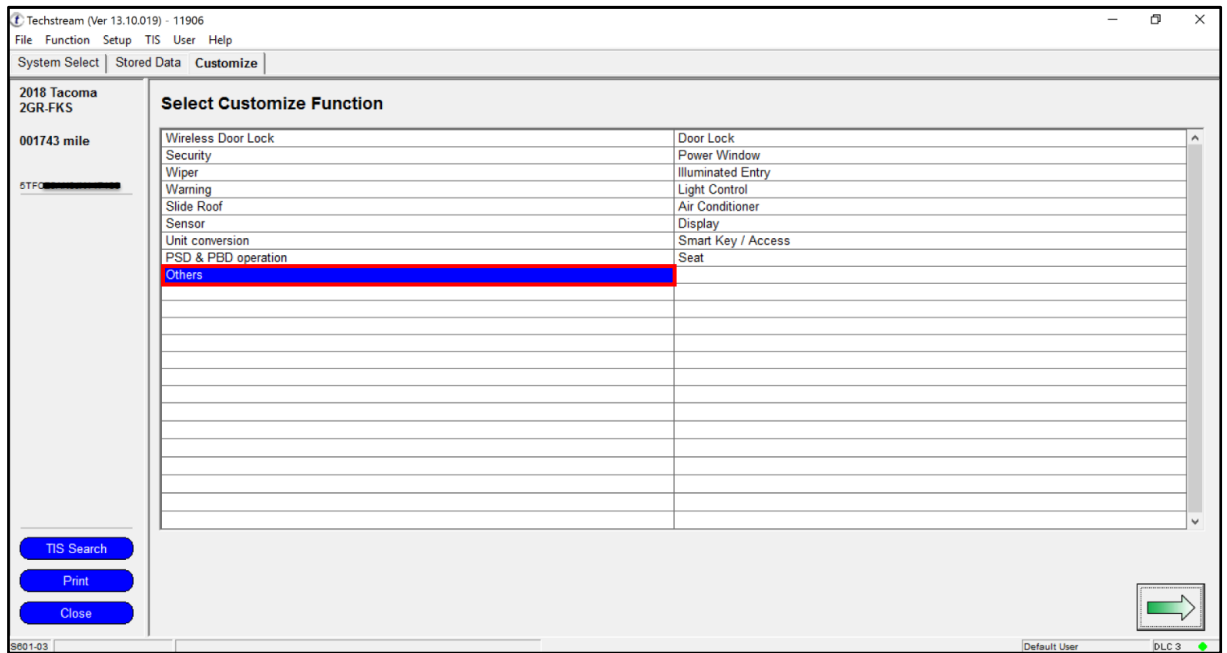
Footer: S303-01 | Default User | DLC 3

Pre-Collision System (PCS) Customizable Features for Off-Road/Special Driving Conditions

Pre-Collision System Customization Procedure (continued)

3. Select Others.

Figure 3.

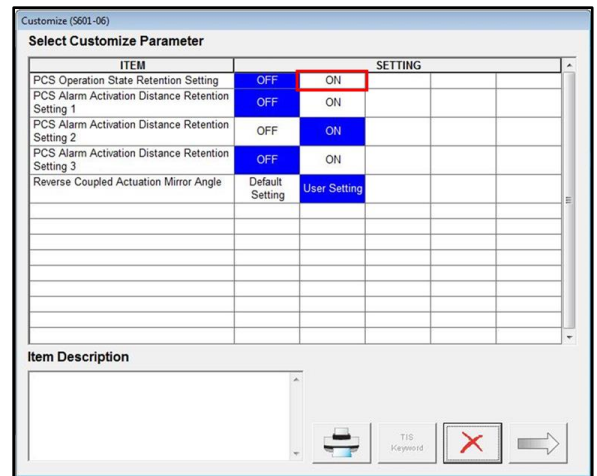


4. Select ON for PCS Operation State Retention Setting.

NOTE

The default setting for PCS Operation State Retention is OFF. Selecting ON will maintain the last PCS setting at ignition OFF for the next time the ignition is cycled.

Figure 4.

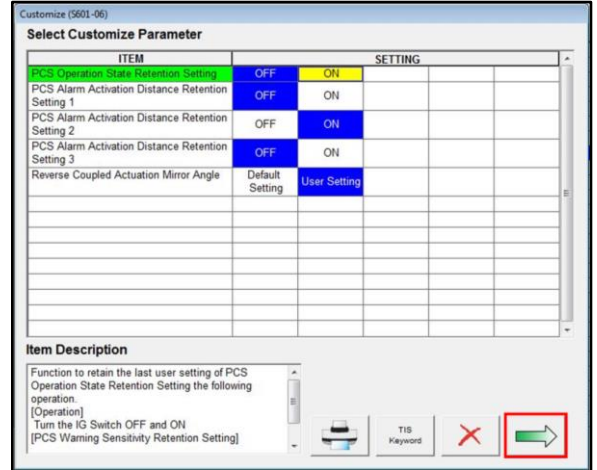


Pre-Collision System (PCS) Customizable Features for Off-Road/Special Driving Conditions

Pre-Collision System Customization Procedure (continued)

- Once ON is selected, click the green arrow at the bottom of the page to continue.

Figure 5.



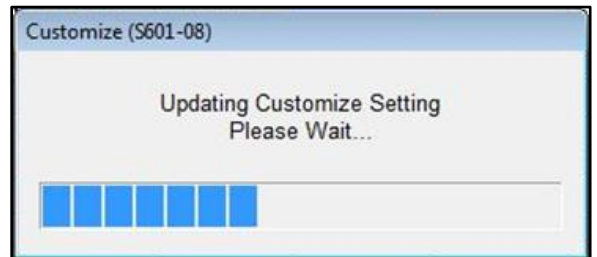
- Click Next to begin the initialization procedure.

Figure 6.



- Once the Customize Setting is updated, the PCS Operation State Retention Setting will be set to maintain the last setting at ignition OFF for the next time the ignition is cycled.

Figure 7.



- Confirm the PCS setting is retained AFTER the ignition cycle.