

Service Campaign Bulletin



Mercedes-Benz

Campaign No. 2018070011, August 2018

TO: ALL MERCEDES-BENZ CENTERS

SUBJECT: **MY17-18 GLE-Class (Model 166) and GLE-Coupe (Model 292)**
Check Front Left Underbody, Rework if Necessary

Daimler AG ("DAG"), the manufacturer of Mercedes-Benz vehicles, has determined that on certain MY17-18 GLE-Class and GLE-Coupe vehicles, the front left underbody may not meet current production specifications. An authorized Mercedes-Benz dealer will check the front left underbody and rework it if necessary.

Prior to performing this Service Campaign:

- Please check VMI to determine if the vehicle is involved in the Campaign and if it has been previously repaired.
- Please review the entire Service Campaign bulletin and follow the repair procedure exactly as described.

Approximately 1246 vehicles are affected.

Order No. P-SC-2018070011

This bulletin has been created and maintained in accordance with MBUSA-SLP S423QH001, Document and Data Control, and MBUSA-SLP S424HH001, Control of Quality Records.

Check Procedure

1. Check front left underbody for cracks.
 - i** There must be no cracks in the underbody (**A, figure 2**).
 - a. If there is a crack: Carry out work procedure.
 - b. If there are no cracks: End measure.



Figure 1 (shown on model 166)



Figure 2 (with visible crack, not ok)

- i** The findings from the check procedure must be recorded on the workorder.

Work Procedure

1. Remove cross-member (1, figure 1).

i For basic data for model 166, see **AR22.10-P-1180GQ**.
For basic data for model 292, see **AR22.10-P-4360OGR**.

2. Drill out to the left and to the right of the crack using a twist drill bit (**3 mm**) (**figure 3**).

i Note: The sheet metal is double-layered in this area. Do not drill deeply. Drill no more than 1 mm deep. Do not drill through the sheet metal.

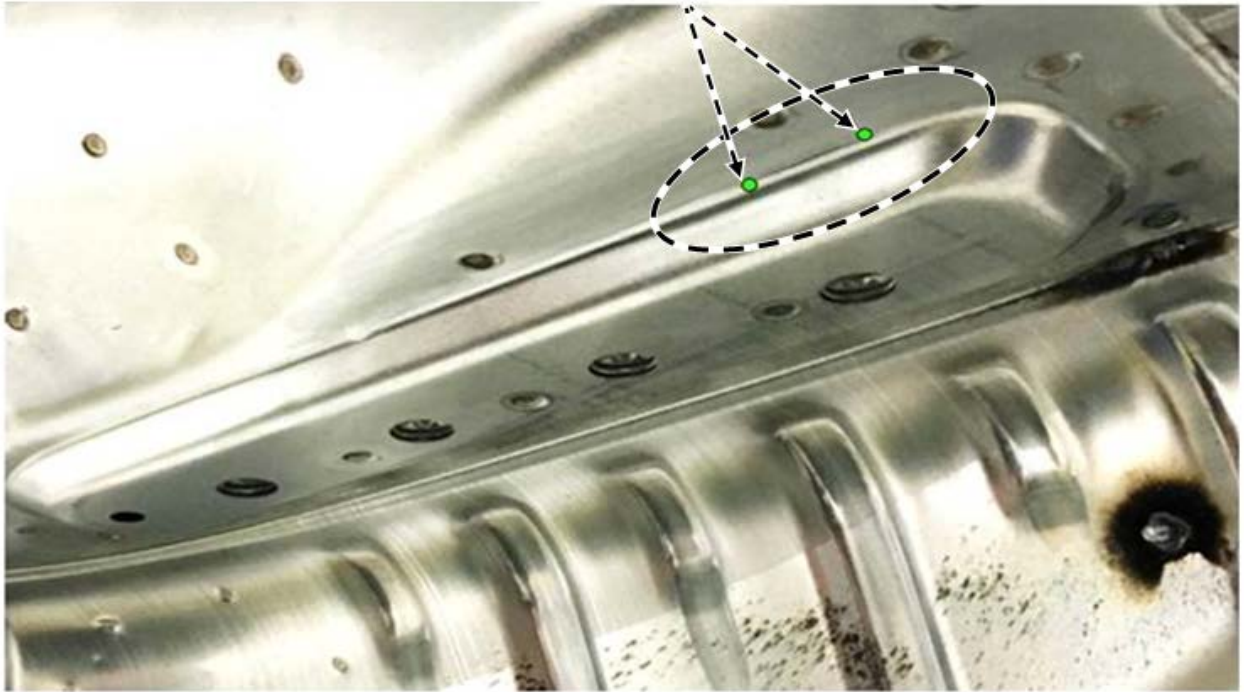


Figure 3 (with visible crack, **not ok**)

3. Seal repair area using body sealant (**A 002 989 63 98**).
4. Apply cavity preservation agent to the reworked area.
5. Reattach cross-member.

Primary Parts Information

Qty.	Part Name	Part Number	Estimated Replacement Rate
As required*	Seam seal	A 002 989 63 98	5%
As required*	Preservation agent	A 000 986 72 70 10	5%

*1 container is to be used for approx. 25 vehicles.

Warranty Information**With check**

Operation: Check left underbody (02-2386)

Damage Code	Operation Number	Labor Time (hrs.)
61 902 33 8	02-2386	0.2 h

With check and repair

Operation: Check left underbody (02-2386)
Rework left underbody (after check) (02-2387)

Damage Code	Operation Number	Labor Time (hrs.)
61 902 33 7	02-2386	0.2 h
	02-2387	0.9 h

**Note**

Operation Number labor times are subject to change.