



Technical Service Bulletin

46 RS7 pulsation when braking (steel brakes only)

46 18 00 2045505/2 November 1, 2018. Supersedes Technical Service Bulletin Group 46 number 16-61 dated October 18, 2016 for reasons listed below.

Model(s)	Year	VIN Range	Vehicle-Specific Equipment
RS7	2014 - 2016	All	Steel brakes
RS7	2017	000001 - 901481	Steel brakes

Condition

REVISION HISTORY		
Revision	Date	Purpose
2	-	Revised <i>Warranty</i> (Updated Labor Operations)
1	10/18/2016	Initial publication

Customer states:

- There is a pulsation when braking at any speed.

Technical Background

Not applicable.

Production Solution

Improved brake discs, with optimized tolerance.

Service

1. Replace the front brake discs and brake pads according to Elsa at Repair Manual, *Chassis >> Brake system >> 46 Brake mechanics >> Front Brakes >> Removing and installing brake disc-steel version brakes (1LA/1LJ/1LF/1LL/1LU/1LM/1LX)*.



Technical Service Bulletin



Tip: If damaged parts are received from PDC, do not install them in the vehicle (Figure 1).

Proceed with the correct Warranty Parts Claim.

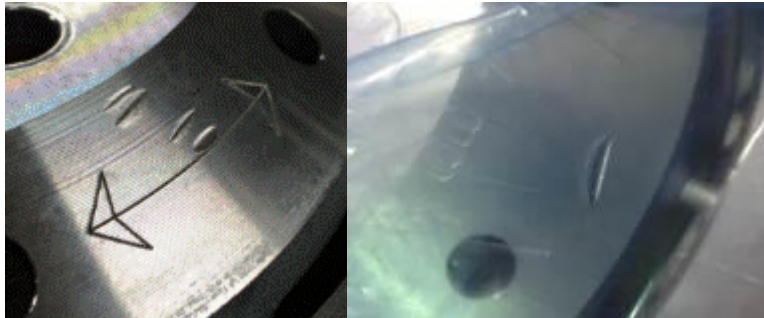


Figure 1. Example of disc brake with impact marks that should NOT be installed.

2. Brake Embedding:

- Perform 5 to 10 medium pressure brake applications from 55 mph to 25 mph.
- Drive 2 minutes at 40 mph to cool down the brakes.
- Repeat if necessary



Note:

Do NOT perform ABS stops as a way of embedding the brakes. Brake pads and discs may be permanently damaged if brakes are overheated prior to being properly embedded.

Warranty

Claim Type:	<ul style="list-style-type: none"> • 110 up to 48 Months/50,000 Miles. • If vehicle is outside any warranty, this Technical Bulletin is informational only. • If damaged parts are received, proceed with Warranty Parts Claim only. 		
Service Number:	4650		
Damage Code:	0010		
Labor Operations:	Front brake disc and pads replace	4650 5652	See SRT
	Front wheels removed + reinstalled	4405 2000	See SRT
Diagnostic Time:	GFF	No allowance	0 TU
	Road test prior to service procedure	0121 0002	10 TU



Technical Service Bulletin

	Road test after service procedure	0121 0004	10 TU
Claim Comment:	As per TSB #2045505/2		

All warranty claims submitted for payment must be in accordance with the *Audi Warranty Policies and Procedures Manual*. Claims are subject to review or audit by Audi Warranty.

Required Parts and Tools

Always check with your Parts Department and/or ETKA for the latest information and parts		
Part Number	Part Description	Quantity
4G0615301AH	Brake disc	02
G052150A2	Lithium Grease	0.10
4F0698269B	Set of securing parts	02
N91147601	Bolt hex. M14x1,5x48	04
See ETKA	Brake pad set	01
See ETKA	Fasteners, Bolts, Nuts and Screws as needed per the Repair Manual	See ETKA/ELSA

Additional Information

All parts and service references provided in this TSB (2045505) are subject to change and/or removal.

©2018 Audi of America, Inc. All rights reserved. Information contained in this document is based on the latest information available at the time of printing and is subject to the copyright and other intellectual property rights of Audi of America, Inc., its affiliated companies and its licensors. All rights are reserved to make changes at any time without notice. No part of this document may be reproduced, stored in a retrieval system, or transmitted in any form or by any means, electronic, mechanical, photocopying, recording, or otherwise, nor may these materials be modified or reposted to other sites without the prior expressed written permission of the publisher.