

MIL ON DTC P261093

Service Category Engine/Hybrid System

Section Engine Control

Market USA



Applicability

| YEAR(S) | MODEL(S) | ADDITIONAL INFORMATION |
|-------------|---------------------|------------------------|
| 2018 | Camry, Camry HV | |
| 2017 - 2018 | Prius Prime, Sienna | |
| 2016 - 2018 | Prius, Tacoma | |

Introduction

Some 2016 – 2018 model year Prius and Tacoma, 2017 – 2018 model year Prius Prime and Sienna, and 2018 model year Camry and Camry Hybrid vehicles may exhibit a MIL ON condition with Diagnostic Trouble Code (DTC) P261093 (ECM/PCM Engine Off Timer Performance No Operation) present. The Engine Control Module (ECM) (SAE term: Powertrain Control Module/PCM) logic has been modified to reduce the possibility of this condition. Follow the Repair Procedure in this bulletin to address this condition.

Warranty Information

| OP CODE | DESCRIPTION | TIME | OFF | T1 | T2 |
|---------|---------------------|------|-------------|----|----|
| EG1822 | Reprogram ECM (PCM) | 0.4 | 89661-##### | 8A | 99 |

NOTE

- For Sienna vehicles ONLY:
Due to a hardware change, refer to [T-SB-0001-18](#), *Transaxle Assembly and ECM (PCM) Software Confirmation* to determine the correct OFF.
- For Camry vehicles ONLY:
Due to a hardware change, refer to [T-SB-0010-18](#), *Transaxle Assembly and ECM (PCM) Software Confirmation* to determine the correct OFF.

APPLICABLE WARRANTY

- **This repair is covered under the Toyota Federal Warranty. This warranty is in effect for 96 months or 80,000 miles, whichever occurs first, from the vehicle's in-service date.**
- **Warranty application is limited to occurrence of the specified condition described in this bulletin.**

MIL ON DTC P261093

Parts Information

Table 1. Sienna (2GR-FKS Engine)

| YEAR | DRIVETRAIN | TIMING | PART NUMBER | | PART NAME | QTY |
|-------------|-------------|-------------------------|-------------------------|-------------|--------------------------------|-----|
| | | | PREVIOUS | NEW | | |
| 2017 | 2WD | Before Hardware Change* | 89661-08160 | 89661-08166 | Computer, Engine Control (ECM) | - |
| | | | 89661-08163 | | | |
| | 89661-08164 | | | | | |
| | 89661-08165 | | | | | |
| 4WD | 4WD | After Hardware Change* | 89661-08530 | 89661-08531 | | |
| | | | Before Hardware Change* | 89661-08440 | | |
| | 89661-08443 | | | | | |
| | 89661-08444 | | | | | |
| 89661-08445 | | | | | | |
| 2018 | 2WD | After Hardware Change* | 89661-08540 | 8661-08541 | | |
| | | | Before Hardware Change* | 89661-08400 | 89661-08401 | |
| | 4WD | After Hardware Change* | | 88961-08580 | 89661-08581 | |
| | | | Before Hardware Change* | 89661-08460 | 89661-08461 | |
| | | After Hardware Change* | | 89661-08590 | 89661-08591 | |

*To determine whether the vehicle is before or after hardware change, reference [T-SB-0001-18](#), *Transaxle Assembly and ECM (PCM) Software Confirmation*.

MIL ON DTC P261093

Parts Information (continued)

Table 2. Camry (2WD)

| YEAR | ENGINE | TIMING | PART NUMBER | | PART NAME | QTY |
|----------------------------------|----------------------------------|----------------------------------|-------------|-------------|--------------------------------|-----|
| | | | PREVIOUS | NEW | | |
| 2018 | A25A-FKS | Before Hardware Change* (NAP) | 89661-06X50 | 89661-06Y02 | Computer, Engine Control (ECM) | - |
| | | | 89661-06X51 | | | |
| | | 89661-06X52 | | | | |
| | | 89661-06Y00 | | | | |
| | After Hardware Change* (NAP) | 89661-06Y01 | | | | |
| | | 89661-06X50 | 89661-06X55 | | | |
| Before Hardware Change* (JPP) | 89661-06X51 | | | | | |
| | 89661-06X52 | | | | | |
| 89661-06X53 | | | | | | |
| 89661-06X54 | | | | | | |
| 2GR-FKS | Before Hardware Change* (JPP) | 89661-33T40 | 89661-33T32 | | | |
| | | 89661-33T41 | | | | |
| After Hardware Change* (JPP) | 89661-33T42 | 89661-33T45 | | | | |
| | 89661-33T43 | | | | | |
| 2GR-FKS | Before Hardware Change* (JPP) | 89661-33T44 | 89661-33T45 | | | |
| | | 89661-33T40 | | | | |
| 2GR-FKS | Before Hardware Change* (JPP) | 89661-33T41 | 89661-33T45 | | | |
| | | 89661-33T42 | | | | |
| 2GR-FKS | After Hardware Change* (JPP) | 89661-33T43 | 89661-33T45 | | | |
| | | 89661-33T44 | | | | |
| 2GR-FKS | Before Hardware Change* (JPP) | 89661-06Y20-A | 89661-06Y21 | | | |
| | | 89661-06Y21 | | | | |
| 2GR-FKS | After Hardware Change* (JPP) | 89661-0X170 | 89661-0X171 | | | |
| | | 89661-0X171 | | | | |

*To determine whether the vehicle is before or after hardware change, reference [T-SB-0010-18](#), *Transaxle Assembly and ECM (PCM) Software Confirmation*.

MIL ON DTC P261093

Parts Information (continued)

Table 3.

| MODEL | YEAR | ENGINE | DRIVETRAIN | PART NUMBER | | PART NAME | QTY |
|-------------|-------------|----------|-----------------------------|----------------------------------------------------------|---------------------------------|--------------------------------|-----|
| | | | | PREVIOUS | NEW | | |
| Camry HV | 2018 | A25A-FXS | 2WD Lithium-ion | 89661-06N40 89661-06N41 89661-06N42 | 89661-06N43 | Computer, Engine Control (ECM) | - |
| | | | 2WD Nickel-metal hydride | 89661-0X280 89661-0X281 | 89661-0X282 | | |
| Prius Prime | 2017 – 2018 | 2ZR-FXE | 2WD | 89661-47750 | 89661-47751 | | |
| Prius | 2016 – 2018 | | 2WD Nickel-metal hydride | 89661-47640 89661-47641 89661-47642 | 89661-47643 | | |
| | | | 2WD Lithium-ion | 89661-47650 89661-47651 89661-47652 | 89661-47653 | | |
| Tacoma | 2016 – 2017 | 2GR-FKS | 2WD/4WD | 89661-04K53 89661-04K52 89661-04K51 89661-04K50 | 89661-04K54 | | |
| | | | 4WD | 89661-04K62 89661-04K61 89661-04K60 | 89661-04K63 | | |
| | | | 2WD/4WD | 89661-04K71-A 89661-04K70 | 89661-04K71-B | | |
| | 2018 | | 2WD/4WD | 89661-04K20-A | 89661-04K21 | | |
| | | | 4WD | 89661-04K30 | 89661-04K31 | | |
| | | | 2WD/4WD | 89661-04K40-A | 89661-04K40-B | | |
| - | | | | 00451-00001-LBL | Authorized Modifications Labels | 1 | |

NOTE

- The ECM (PCM) should NOT be replaced as part of the Repair Procedure.
- Authorized Modifications Labels may be ordered in packages of 25 from the Materials Distribution Center (MDC) through *Dealer Daily – Parts – Dealer Support Materials Orders*.

MIL ON DTC P261093

Required Tools & Equipment

| REQUIRED EQUIPMENT | SUPPLIER | PART NUMBER | QTY |
|-------------------------------|----------|--------------|-----|
| Techstream 2.0* | ADE | TS2UNIT | 1 |
| Techstream Lite | | TSLITEPDLR01 | |
| Techstream Lite (Green Cable) | | TSLP2DLR01 | |

*Essential SST.

NOTE

- Only ONE of the Techstream units listed above is required.
- Software version 13.30.018 or later is required.
- Additional Techstream units may be ordered by calling Approved Dealer Equipment (ADE) at 1-800-368-6787.
- Use Techstream or an approved J2534 interface to perform flash reprogramming updates. Visit techinfo.toyota.com for more information regarding J2534 reprogramming.

| SPECIAL SERVICE TOOLS (SST) | PART NUMBER | QTY |
|---------------------------------|-----------------------------|-----|
| GR8 Battery Diagnostic Station* | 00002-MCGR8 | 1 |

*Essential SST.

NOTE

Additional SSTs may be ordered by calling 1-800-933-8335.

Calibration Information

| MODEL | YEAR | ENGINE | DRIVETRAIN | ECU TYPE | CALIBRATION ID | |
|-------------|-------------------|----------|-----------------------------|----------|----------------------------------------------|------------------------------|
| | | | | | PREVIOUS | NEW |
| Camry HV | 2018 | A25A-FXS | 2WD Lithium-ion | Main | 8966306B2100 8966306B2200 8966306B2300 | 8966306B2400 |
| | | | 2WD Nickel-metal hydride | | 8966306N8100 8966306N8200 | 8966306N8300 |
| Prius Prime | 2017 – 2018 | 2ZR-FXE | 2WD | | 896634768000 | 896634768100 |

MIL ON DTC P261093

Calibration Information (continued)

| MODEL | YEAR | ENGINE | DRIVETRAIN | ECU TYPE | CALIBRATION ID | | |
|---------|-------------------|--------------|------------------------------|--------------------------------------------------------------|----------------------------------------------|--------------------------------------------------------------|------------------------------------------------------------------------------|
| | | | | | PREVIOUS | NEW | |
| Prius | 2016 – 2018 | 2ZR-FXE | 2WD Nickel-metal hydride | Main | 896634759000 896634759100 896634759200 | 896634759300 | |
| | | | 2WD Lithium-ion | | 896634760000 896634760100 896634760200 | 896634760300 | |
| Tacoma | 2016 – 2017 | 2GR-FKS | 2WD/4WD | | Sub | 8966304B0300 8966304B0200 8966304B0100 8966304B0000 | 8966304B0400 |
| | | | | | | 4WD | Main |
| | | | 2WD/4WD | Sub | 8966304B1200 8966304B1100 8966304B1000 | | |
| | | | | | 2WD/4WD | Main | 8966304B2400 8966304B2300 8966304B2200 8966304B2100 8966304B2000 |
| | 2018 | | Main | 896650403000 896650403100 896650403200 896650403300 | | | 896650403400 |
| | | | | Sub | 8966304A6000 | 8966304A6100 | |
| | | | 4WD | Main | 896650404000 | 896650404100 | |
| | | | | | Sub | 8966304A7000 | 8966304A7100 |
| 2WD/4WD | Main | 8966304A8000 | 8966304A8100 | | | | |
| | | Sub | 896650406000 | 896650406100 | | | |

MIL ON DTC P261093

Calibration Information (continued)

| MODEL | YEAR | ENGINE | DRIVETRAIN | TIMING | ECU TYPE | CALIBRATION ID | |
|--------------|------|----------|------------|-------------------------------|----------|----------------|------------------------------|
| | | | | | | PREVIOUS | NEW |
| Camry | 2018 | A25A-FKS | 2WD | Before Hardware Change* (NAP) | Main | 8966333P4300 | 8966333P3200 |
| | | | | | | 8966333P4200 | |
| | | | | 8966333P4100 | | | |
| | | | | 8966333P4000 | | | |
| 8966333P3000 | | | | | | | |
| 8966333P3100 | | | | | | | |
| | | | | | Sub | 896653379100 | 896653356100 |
| | | | | | | 896653379000 | |
| 896653356000 | | | | | | | |
| | | | | After Hardware Change* (NAP) | Main | 8966333P4500 | 8966333P4600 |
| | | | | | | 8966333P4400 | |
| | | | | 8966333P4300 | | | |
| | | | | 8966333P4200 | | | |
| 8966333P4100 | | | | | | | |
| 8966333P4000 | | | | | | | |
| 8966333P3000 | | | | | | | |
| 8966333P3100 | | | | | | | |
| 8966333P3200 | | | | | | | |
| | | | | | Sub | 896653379200 | 896653379300 |
| | | | | | | 896653379100 | |
| 896653379000 | | | | | | | |
| 896653356000 | | | | | | | |
| 896653356100 | | | | | | | |

*To determine whether the vehicle is before or after hardware change, reference [T-SB-0010-18](#), *Transaxle Assembly and ECM (PCM) Software Confirmation*.

MIL ON DTC P261093

Calibration Information (continued)

| MODEL | YEAR | ENGINE | DRIVETRAIN | TIMING | ECU TYPE | CALIBRATION ID | |
|--------------|------------------------------|--------------|------------------------------|-------------------------------|--------------|------------------------------|------------------------------|
| | | | | | | PREVIOUS | NEW |
| Camry | 2018 | A25A-FKS | 2WD | Before Hardware Change* (JPP) | Main | 8966333P4300 | 8966333P3200 |
| | | | | | | 8966333P4200 | |
| | | | | | 8966333P4100 | | |
| | | | | | 8966333P4000 | | |
| | | 8966333P3000 | | Sub | 896653379100 | 896653356100 | |
| | | 8966333P3100 | | | | | |
| | | 896653379000 | | | | | |
| | | 896653356000 | | | | | |
| 2GR-FKS | After Hardware Change* (JPP) | Main | 8966333P4500 | 8966333P4600 | | | |
| | | | 8966333P4400 | | | | |
| | | 8966333P4300 | | | | | |
| | | 8966333P4200 | | | | | |
| 8966333P4100 | Sub | 8966333P4000 | 896653379300 | | | | |
| 8966333P3000 | | | | | | | |
| 8966333P3100 | | | | | | | |
| 8966333P3200 | | | | | | | |
| 2GR-FKS | Before Hardware Change* | Main | 8966306L5000 | 8966306L5200 | | | |
| | | | 8966306L5100 | | | | |
| | After Hardware Change* | Main | 8966306L4000 | 8966306L4200 | | | |
| | | | 8966306L4100 | | | | |
| 8966306L5000 | | | | | | | |
| 8966306L5100 | | | | | | | |
| 8966306L5200 | Sub | 896650644000 | 896650654000 | | | | |

*To determine whether the vehicle is before or after hardware change, reference [T-SB-0010-18](#), *Transaxle Assembly and ECM (PCM) Software Confirmation*.

MIL ON DTC P261093

Calibration Information (continued)

| MODEL | YEAR | ENGINE | DRIVETRAIN | TIMING | ECU TYPE | CALIBRATION ID | |
|--------|------|---------|------------|-------------------------|----------|----------------------------------------------------------------------------------------------|------------------------------|
| | | | | | | PREVIOUS | NEW |
| Sienna | 2017 | 2GR-FKS | 2WD | Before Hardware Change* | Main | 896630828000 896630828300 896630828400 896630828500 | 896630828600 |
| | | | | | Sub | 896650807000 896650807100 | 896650807200 |
| | | | | After Hardware Change* | Main | 896630828000 896630828300 896630828400 896630828500 896630828600 896630846000 | 896630846100 |
| | | | | | Sub | 896650807000 896650807100 896650807200 | 896650819000 |
| | | | 4WD | Before Hardware Change* | Main | 896630836000 896630836300 896630836400 896630836500 | 896630836600 |
| | | | | | Sub | 896650808000 896650808100 | 896650808200 |
| | | | | After Hardware Change* | Main | 896630836000 896630836300 896630836400 896630836500 896630836600 896630847000 | 896630847100 |
| | | | | | Sub | 896650808000 896650808100 896650808200 | 896650820000 |

*To determine whether the vehicle is before or after hardware change, reference [T-SB-0001-18](#), *Transaxle Assembly and ECM (PCM) Software Confirmation*.

MIL ON DTC P261093

Calibration Information (continued)

| MODEL | YEAR | ENGINE | DRIVETRAIN | TIMING | ECU TYPE | CALIBRATION ID | |
|--------------|------------------------------|---------|--------------|-------------------------|----------|------------------------------|------------------------------|
| | | | | | | PREVIOUS | NEW |
| Sienna | 2018 | 2GR-FKS | 2WD | Before Hardware Change* | Main | 896630832000 | 896630832100 |
| | | | | After Hardware Change* | | 896630832000 | 896630851100 |
| | | | | | | 896630832100 | |
| | | | | 896630851000 | | 896650823100 | |
| | | | 896650811000 | | | | |
| | | | 4WD | Before Hardware Change* | Main | 896630838000 | 896630838100 |
| | | | | After Hardware Change* | | 896630838000 | 896630852100 |
| | | | | | | 896630838100 | |
| 896630852000 | 896650824100 | | | | | | |
| 896650812000 | | | | | | | |
| 896650824000 | | | | | | | |

*To determine whether the vehicle is before or after hardware change, reference [T-SB-0001-18](#), *Transaxle Assembly and ECM (PCM) Software Confirmation*.

Repair Procedure

- Using Techstream, check for DTC P261093 (ECM/PCM Engine Off Timer Performance No Operation).

Is DTC P261093 present?

- YES** — Continue to step 2.
- NO** — This bulletin does NOT apply. Continue diagnosis using the applicable Repair Manual.

MIL ON DTC P261093

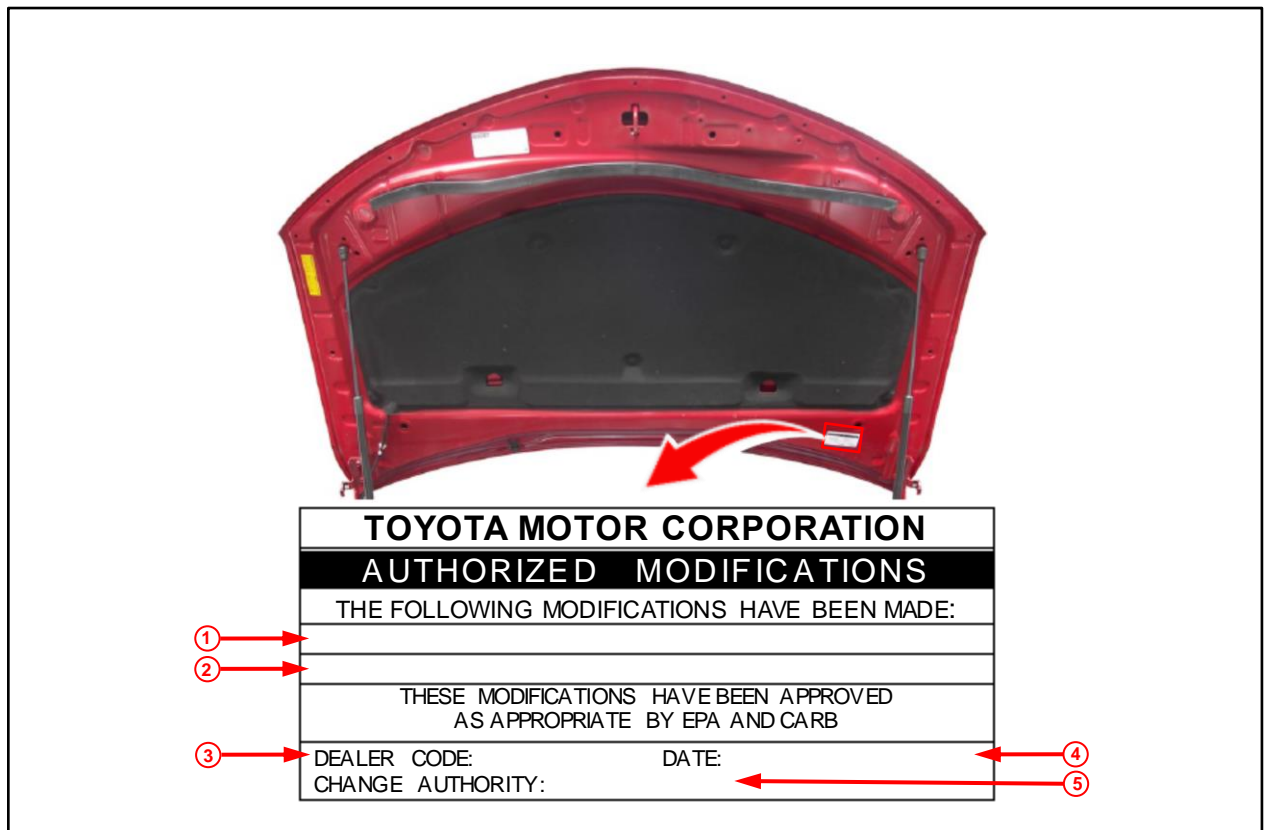
Repair Procedure (continued)

- Check for the Authorized Modifications Label affixed to the vehicle in the locations shown in Figures 1 – 4. Confirm if the ECM (PCM) calibration has been updated.

Is the calibration ID listed the latest ECM (PCM) calibration?

- YES** — This bulletin does NOT apply. Continue diagnosis using the applicable Repair Manual.
- NO** — Continue to step 3.

Figure 1. Location of Authorized Modifications Label on 2018 Camry and Camry HV



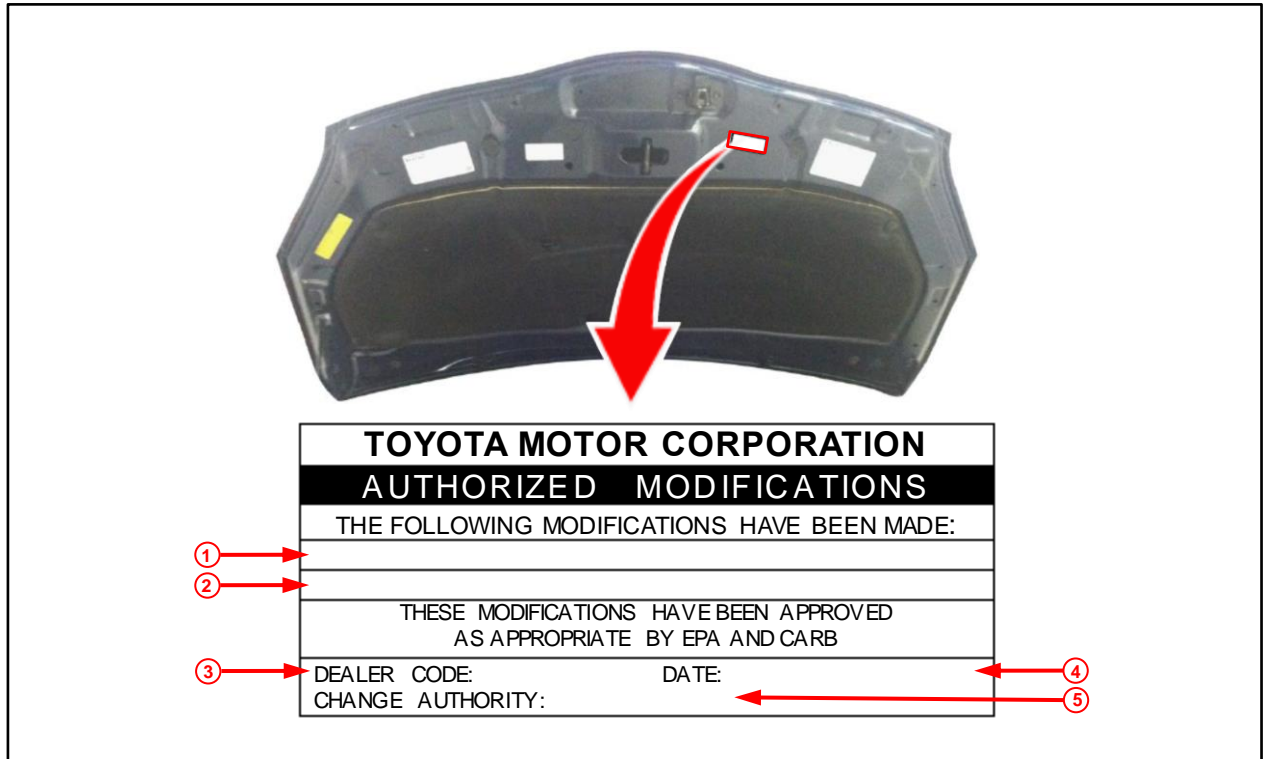
| | |
|----------|-----------------------------------------------------------------|
| 1 | Replacement ECM (PCM) Part Number (e.g., 89661-06Y02) |
| 2 | New Calibration ID (e.g., 8966333P3200) |
| 3 | Dealer Code |

| | |
|----------|-----------------------|
| 4 | Date Completed |
| 5 | This SB Number |

MIL ON DTC P261093

Repair Procedure (continued)

Figure 2. Location of Authorized Modifications Label on 2017 – 2018 Prius Prime and 2016 – 2018 Prius



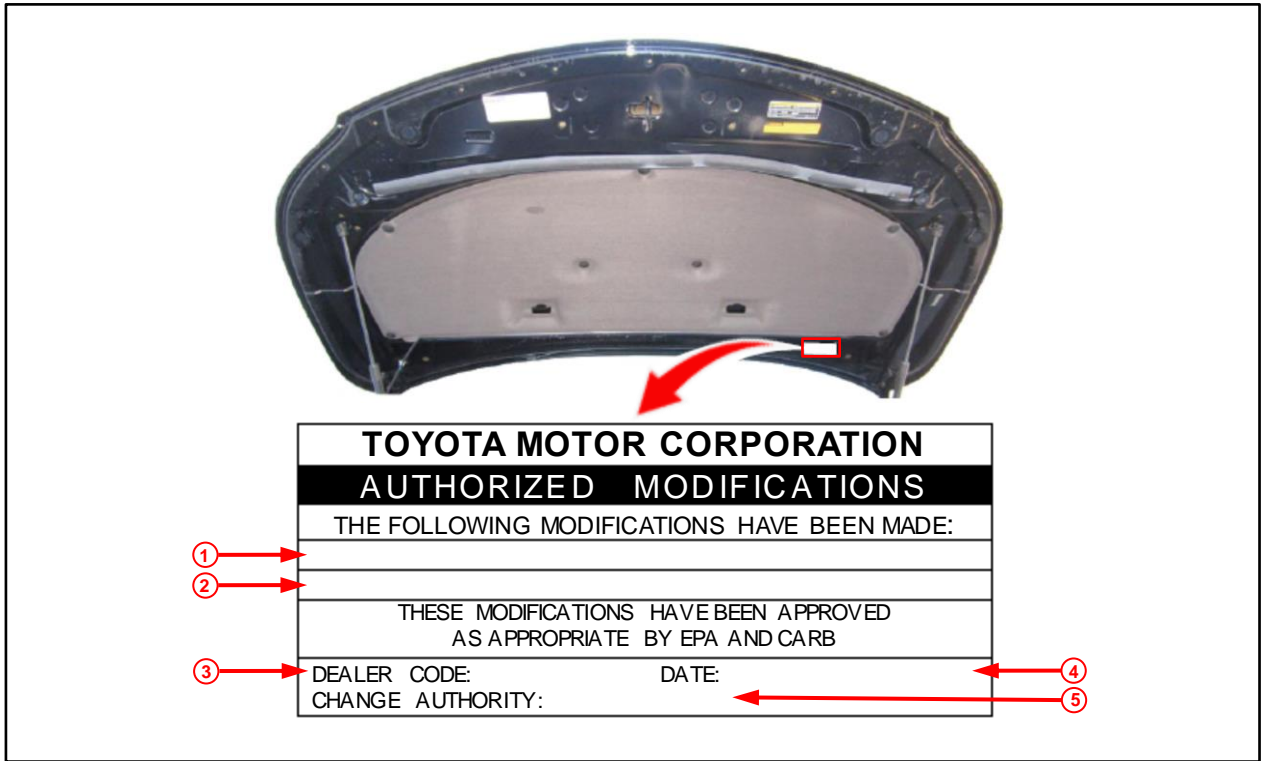
| | |
|----------|--------------------------------------------------------------|
| 1 | Replacement ECM (PCM) Part Number (e.g., 89661-47643) |
| 2 | New Calibration ID (e.g., 896634759300) |
| 3 | Dealer Code |

| | |
|----------|-----------------------|
| 4 | Date Completed |
| 5 | This SB Number |

MIL ON DTC P261093

Repair Procedure (continued)

Figure 3. Location of Authorized Modifications Label on 2017 – 2018 Sienna



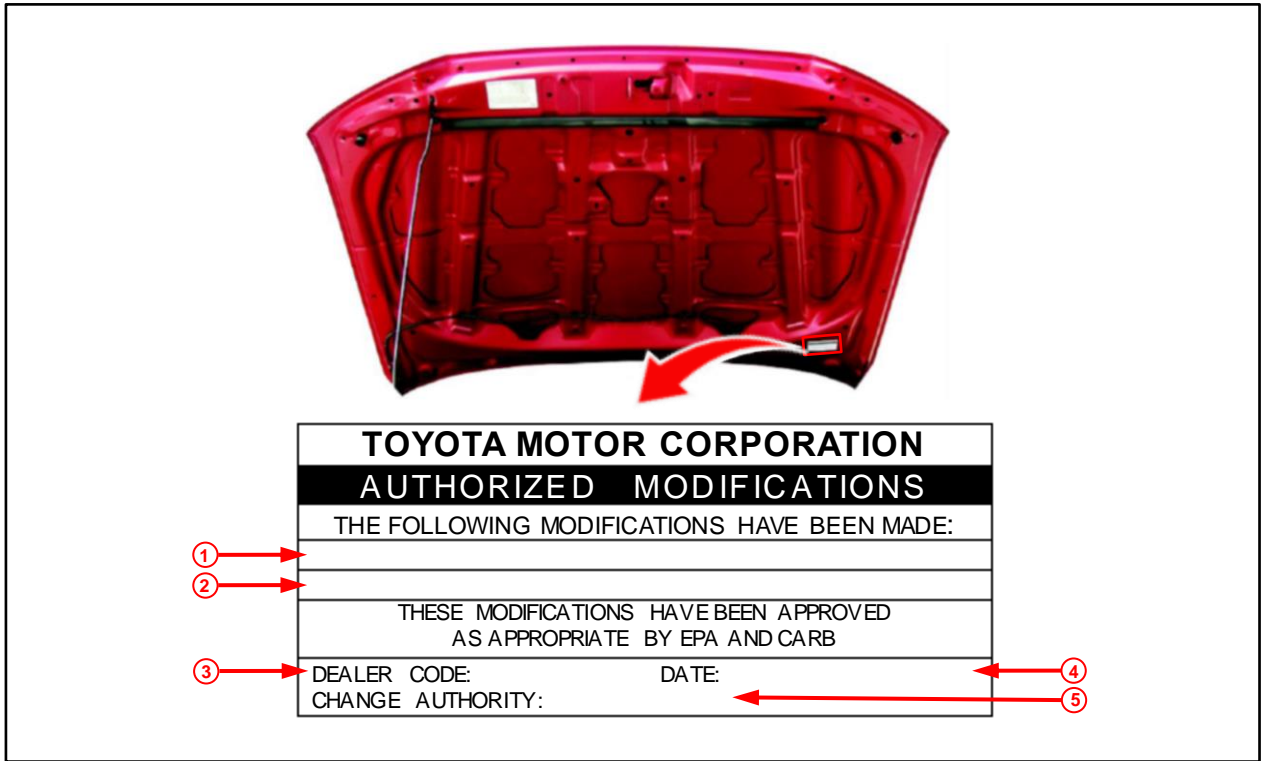
| | |
|----------|--------------------------------------------------------------|
| 1 | Replacement ECM (PCM) Part Number (e.g., 89661-08166) |
| 2 | New Calibration ID (e.g., 896630828600) |
| 3 | Dealer Code |

| | |
|----------|-----------------------|
| 4 | Date Completed |
| 5 | This SB Number |

MIL ON DTC P261093

Repair Procedure (continued)

Figure 4. Location of Authorized Modifications Label on 2016 – 2018 Tacoma



| | |
|----------|--------------------------------------------------------------|
| 1 | Replacement ECM (PCM) Part Number (e.g., 89661-04K54) |
| 2 | New Calibration ID (e.g., 8966304B0400) |
| 3 | Dealer Code |

| | |
|----------|-----------------------|
| 4 | Date Completed |
| 5 | This SB Number |

MIL ON DTC P261093

Repair Procedure (continued)

3. Flash reprogram the ECM (PCM).

NOTE

- The GR8 battery diagnostic station **MUST** be used in Power Supply Mode to maintain battery voltage at 13.5V while flash reprogramming the vehicle.
- For details on how to use the GR8 battery diagnostic station, refer to the [GR8 Instruction Manual](#) located at TIS – *Diagnostics – Tools & Equipment – Battery Diagnostics*.

Follow the procedures outlined in Service Bulletin [T-SB-0134-16](#), *Techstream ECU Flash Reprogramming Procedure*, and flash the ECM (PCM) with the NEW calibration file update.

4. Prepare and install the Authorized Modifications Label.

A. Using a permanent marker, enter the following information on the label:

- ECM (PCM) part number [*Refer to the **Parts Information** section for the **NEW PART NUMBER***]
- Calibration ID(s) [*Refer to the **Calibration Information** section for the **NEW CALIBRATION ID***]
- Dealer Code
- Repair Date
- Change Authority [***This bulletin number***]

B. Install the Authorized Modifications Label onto the vehicle at the location shown in Figures 1 – 4. The Authorized Modifications Label is available through the MDC, P/N 00451-00001-LBL.

5. Test-drive the vehicle to confirm proper operation.