

## Advanced Technical Information

Cayenne (92A)  
1816 9431

9

## Tail Light Defective Warning in the Instrument Cluster

This ATI bulletin replaces bulletin Group 9, #1503, dated 12-19-17.

### Vehicles Affected

Model	Model Year	Model Type	VIN Range	Vehicle-Specific Equipment
Cayenne	2015-2018	92A	N/A	N/A

### Concern

The driver receives a warning message in the instrument cluster indicating that a tail light is not working. (See Figure 1.) However, in some cases, the tail light actually does work as observed from outside the vehicle.

### Technical Background

The workshop confirms the customer's observation along with fault codes 880FOE or 880F1E in the rear BCM module. However, the tail light may be working.



Figure 1

### Service Information

New guided fault finding is available in the PIWIS tester as of release 37.000. Consult this repair advice first.

The alternate solution is to replace at least one of the tail lights based on these failure modes:

- A) **False warning.** If the warning message is present and all the tail lights are lighted, the likely causative part is the outer tail light. Be sure to order replacement parts from the part numbers listed below.

Since 2016, replacement **outer tail lights** have been available with different part numbers. For the **inner tail lights**, old parts were withdrawn and replacement parts are available using the same part numbers.

Previous Part Number	Current Part Number
95863106120	95863106121
95863106130	95863106131
95863106220	95863106221
95863106230	95863106231

- B) **Actual tail light outage.** If the warning is present and any of the tail lights are not lighted, replace that tail light as usual.

### Service Information(continued)

**Please note:** In either case, replacement tail lights (both inner and outer) should have a production date after September 15, 2017. Figures 2 and 3 have examples of **good** and **bad** dates. The labels shown in these illustrations can be found on the tail light itself and these labels should be used. The labels on the box and other labels may show dates that are not relevant to this issue and these should not be used.

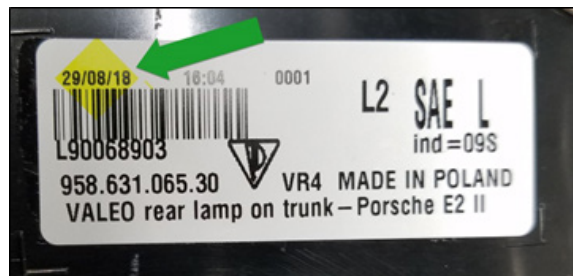


Figure 2

### Search Items

Tail, light; lights; taillights; rear; lamp; false warning

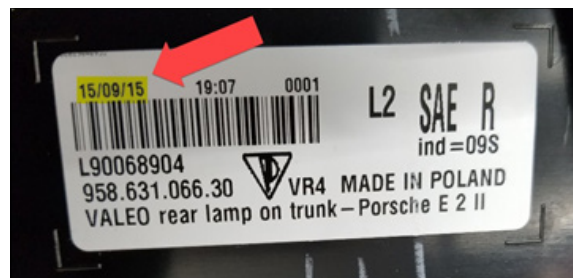


Figure 3

**Important Notice:** Technical Bulletins issued by Porsche Cars North America, Inc. are intended only for use by professional automotive technicians who have attended Porsche service training courses. They are written to inform those technicians of conditions that may occur on some Porsche vehicles, or to provide information that could assist in the proper servicing of a vehicle. Porsche special tools may be necessary in order to perform certain operations identified in these bulletins. Use of tools and procedures other than those Porsche recommends in these bulletins may be detrimental to the safe operation of your vehicle, and may endanger the people working on it. Properly trained Porsche technicians have the equipment, tools, safety instructions, and know-how to do the job properly and safely. Part numbers listed in these bulletins are for reference only. The work procedures updated electronically in the Porsche PIWIS diagnostic and testing device take precedence and, in the event of a discrepancy, the work procedures in the PIWIS Tester are the ones that must be followed.