



---

# SERVICE BULLETIN

---

Classification:

HA19-001

Reference:

NTB19-013

Date:

February 15, 2019

---

## 2016-2018 TITAN/TITAN XD WITH AUTO A/C; VAST TEMPERATURE DIFFERENCE BETWEEN 61°F & 62°F SETTINGS

**APPLIED VEHICLES:** 2016-2018 Titan (A61)  
2016-2018 Titan XD (A61)  
**APPLIED SYSTEM:** Auto A/C ONLY

### IF YOU CONFIRM

The customer states there is a significant difference in vent temperature between auto A/C settings of 61°F and 62°F.

### ACTION

1. Check the A/C auto amp's current part number.
2. If the current part number matches one listed in **Table A** (see page 6), reprogram the A/C auto amp.

**IMPORTANT:** The purpose of **ACTION** (above) is to give you a quick idea of the work you will be performing. You **MUST** closely follow the entire **SERVICE PROCEDURE** as it contains information that is essential to successfully completing this repair.

Nissan Bulletins are intended for use by qualified technicians, not 'do-it-yourselfers'. Qualified technicians are properly trained individuals who have the equipment, tools, safety instruction, and know-how to do a job properly and safely. **NOTE:** If you believe that a described condition may apply to a particular vehicle, **DO NOT** assume that it does. See your Nissan dealer to determine if this applies to your vehicle.

## SERVICE PROCEDURE

### A/C Auto Amp Reprogramming

#### IMPORTANT: Before starting, make sure:

- ASIST on the CONSULT PC has been synchronized (updated) to the current date.
- All CONSULT-III plus (C-III plus) software updates (if any) have been installed.
- The CONSULT PC is connected to the Internet (Wi-Fi or cable).

#### CAUTION:

- Connect the GR8 to the 12V battery and select ECM Power Supply Mode. If the vehicle battery voltage drops below 12.0V or above 15.5V during reprogramming, the A/C auto amp may be damaged.
- Be sure to turn OFF all vehicle electrical loads. If a vehicle electrical load remains ON, the A/C auto amp may be damaged.
- Be sure to connect the AC Adapter. If the CONSULT PC battery voltage drops during reprogramming, the process will be interrupted and the A/C auto amp may be damaged.
- Turn OFF all external Bluetooth® devices (e.g., cell phones, printers, etc.) within range of the CONSULT PC and the plus VI. If Bluetooth® signal waves are within range of the CONSULT PC and plus VI during reprogramming, reprogramming may be interrupted and the A/C auto amp may be damaged.

1. Connect the CONSULT PC and plus VI to the vehicle, and then start/open C-III plus.
  - Wait for the plus VI to be recognized / connected.
2. Cycle the ignition to ON (do not start the engine).
3. Turn ON the hazard warning lamps.
4. **Make sure the auto A/C is turned OFF.**
5. Select **Re/programming, Configuration.**

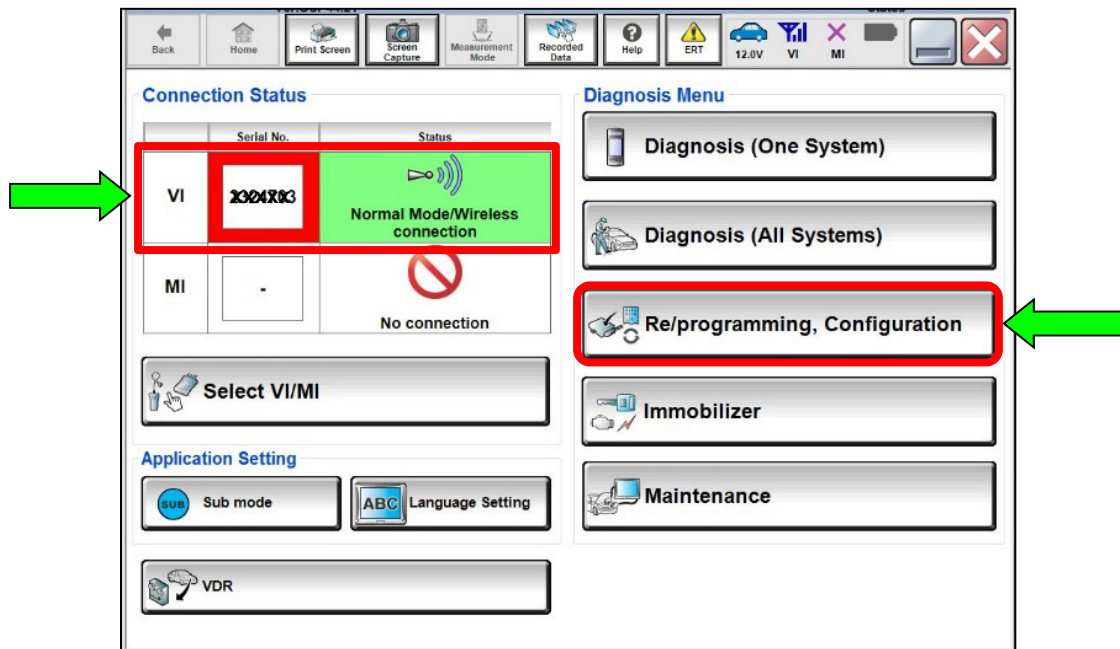


Figure 1

6. Read and follow all text on the screen below, select the **Confirmed Instructions** box, and then select **Next**.

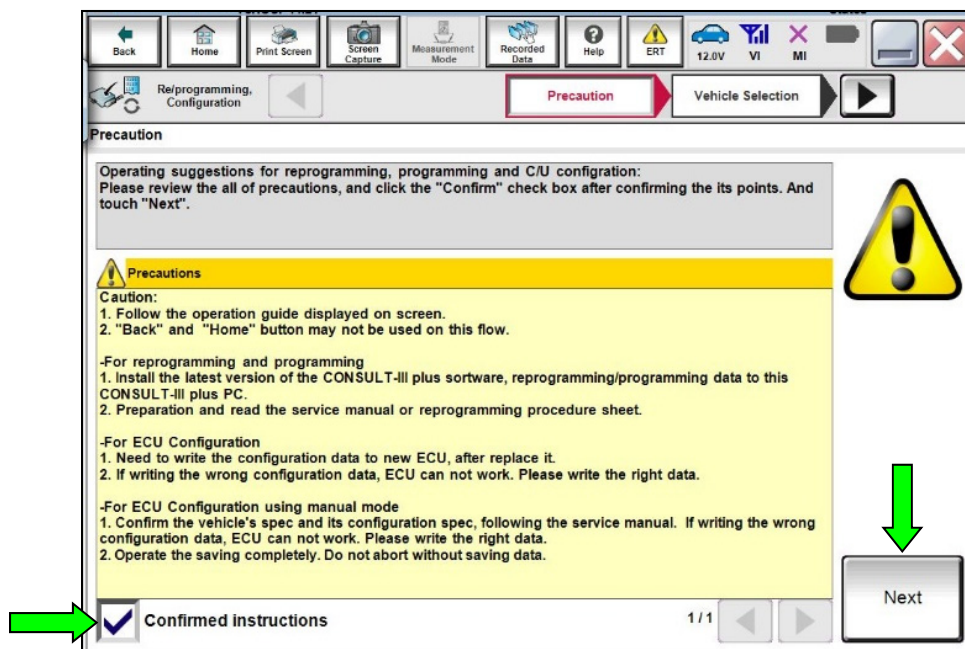


Figure 2

7. Select **Confirm**.

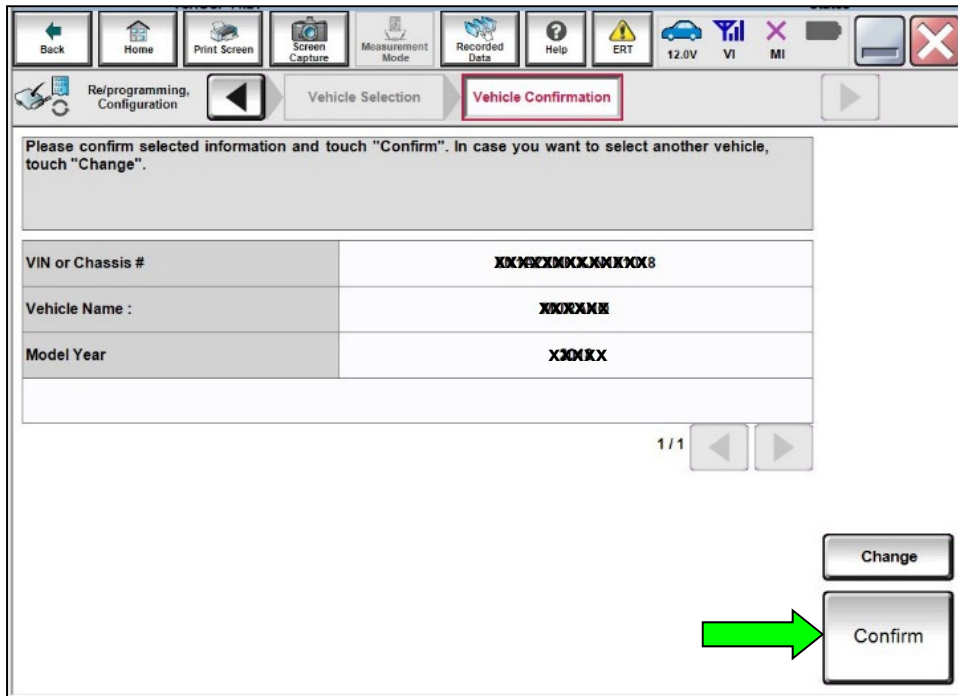


Figure 3

8. Select **Confirm**.

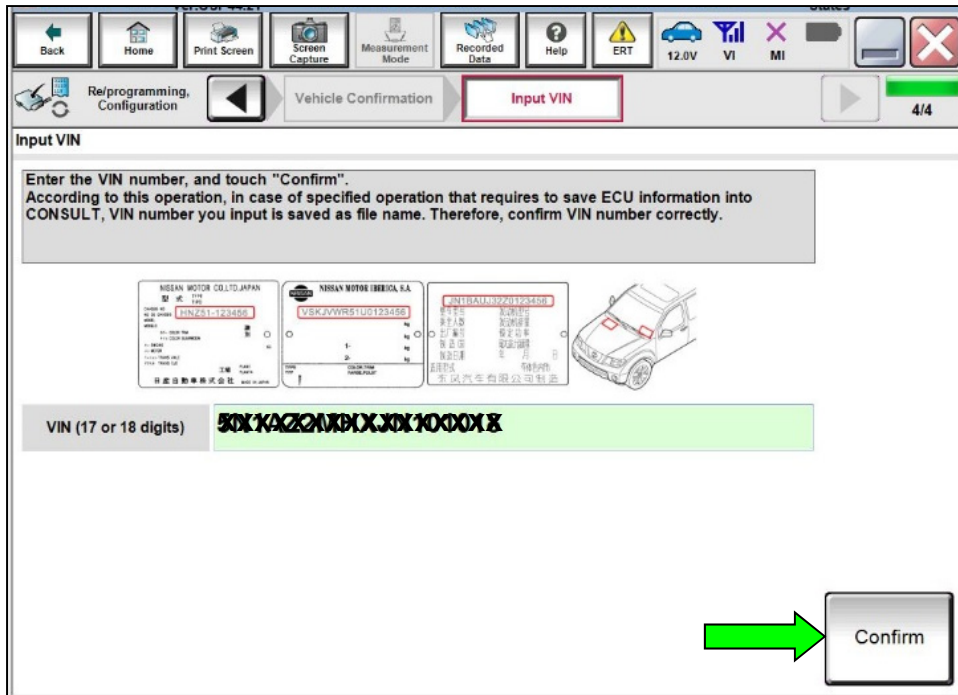


Figure 4

## 9. Select HVAC/AIR CONDITIONING.

- To find HVAC/AIR CONDITIONING, the second page may need to be selected.

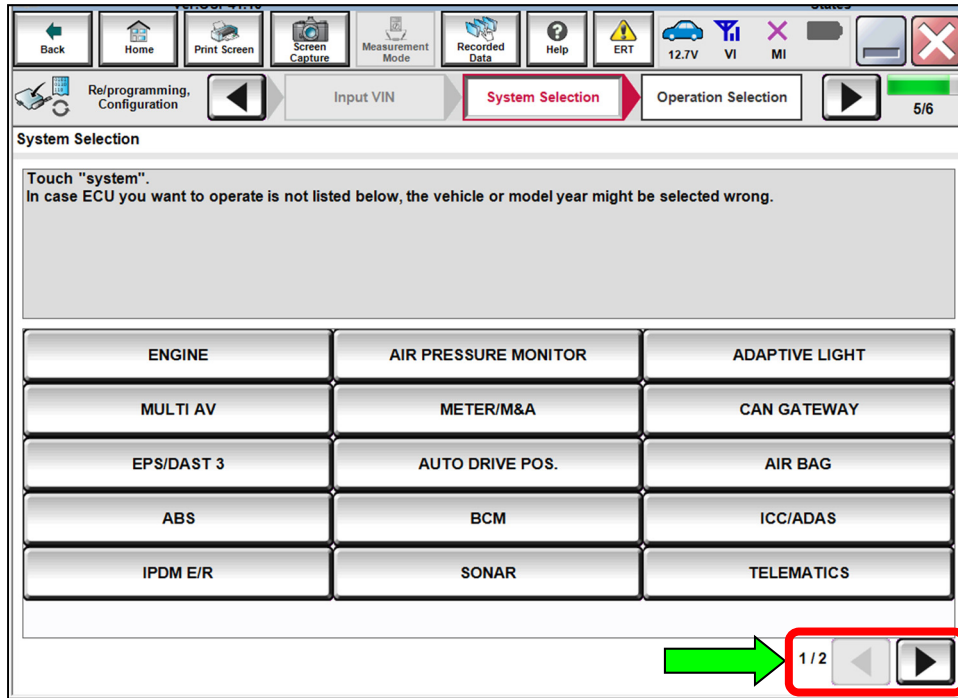


Figure 5

## 10. Select Reprogramming.

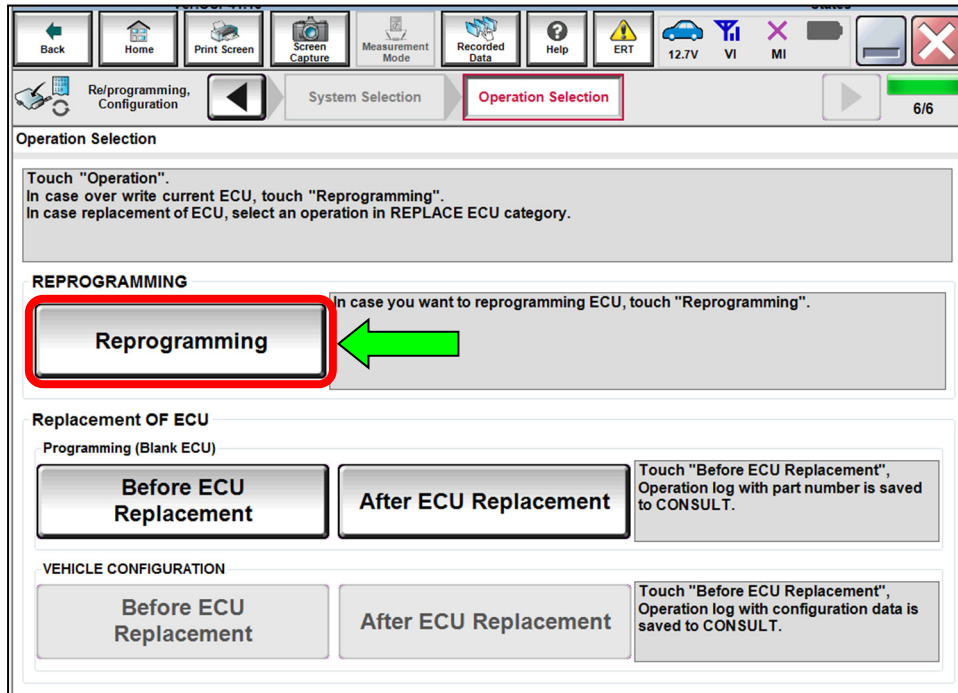


Figure 6

11. Confirm this bulletin applies as follows.

a. Find the A/C auto amp **Part Number** and write it on the repair order.

**NOTE:** This is the current A/C auto amp Part Number (P/N).

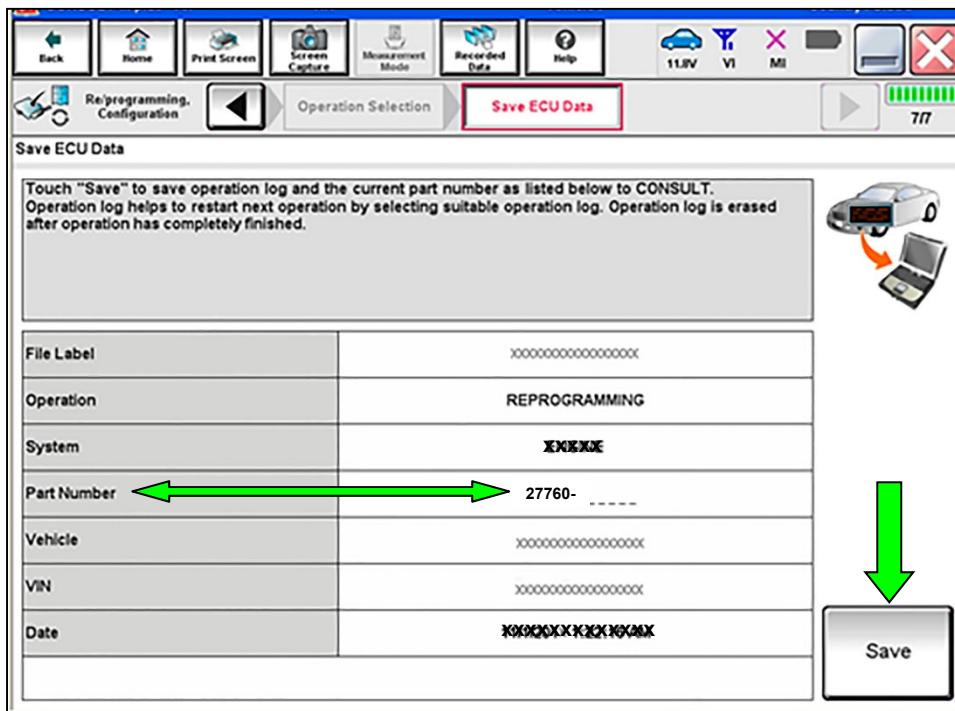


Figure 7

b. Compare the P/N you wrote down to the current P/Ns in **Table A** below.

- If there is a match, this bulletin applies. Select **Save**, and then go to step 12.
- If there is not a match, reprogramming does not apply. Refer to ASIST for further diagnosis.

Table A

MODEL	CURRENT A/C AUTO AMP PART NUMBER: 27760-
Titan with auto A/C (gasoline V8)	EZ00B, EZ00C, EZ00D, EZ00E
	9FT0A
Titan with auto A/C (diesel V8)	EZ10A, EZ10B, EZ10C, EZ10D
	9FT1A

12. Read and follow all text on both screens, select the **Confirmed Instructions** box, and then select **Next** (see Figure 8).

- The second page will need to be selected before the **Confirmed Instructions** box can be selected.

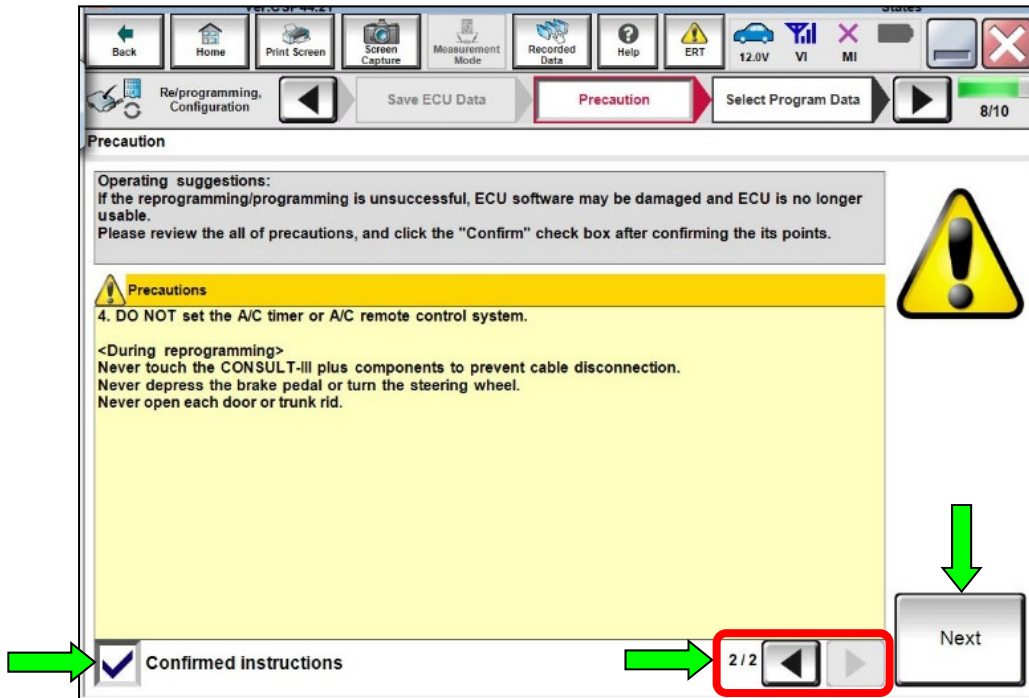


Figure 8

13. Select **Next**.

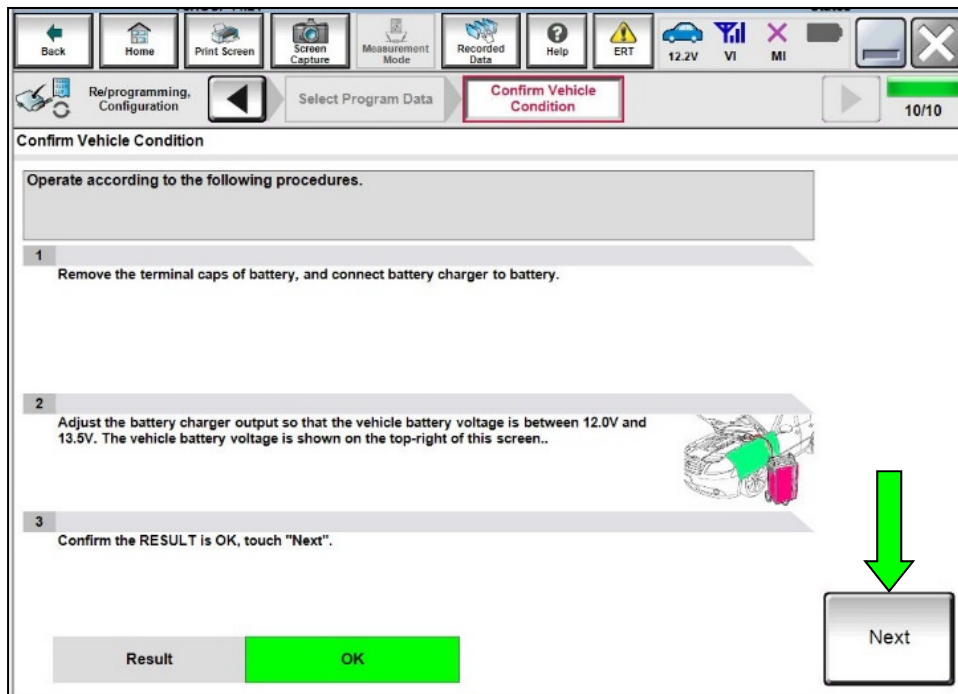


Figure 9

14. With the voltage in range and **Judgment** showing OK, select **Start**.

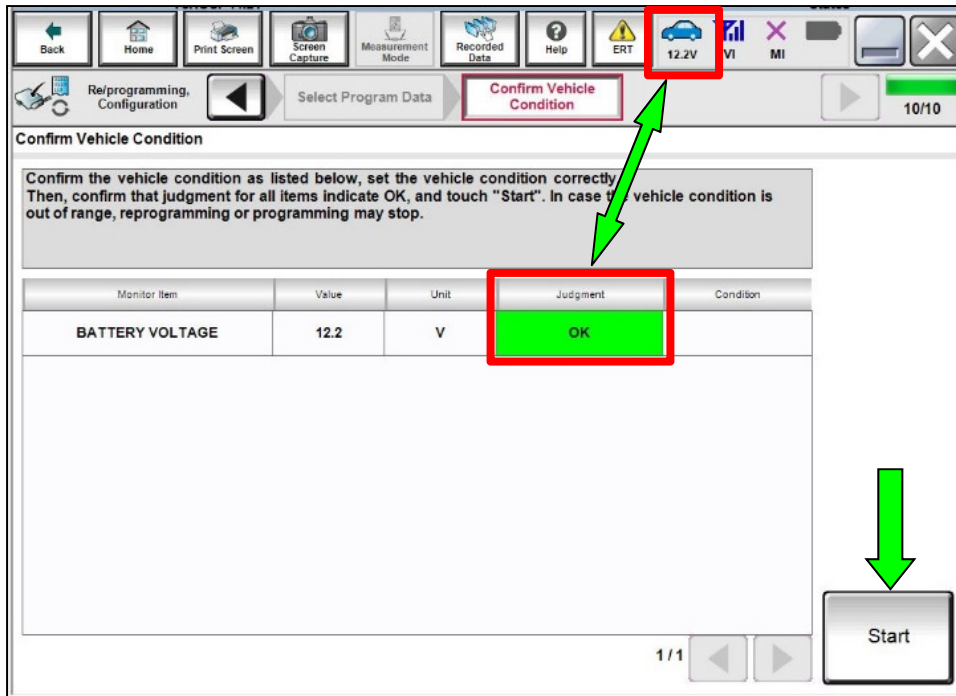


Figure 10

15. Select **USA/CANADA Dealers**, and then select **OK**.

**NOTE:**

- The screen below may not display if the CONSULT PC has remained ON since the last reprogramming.

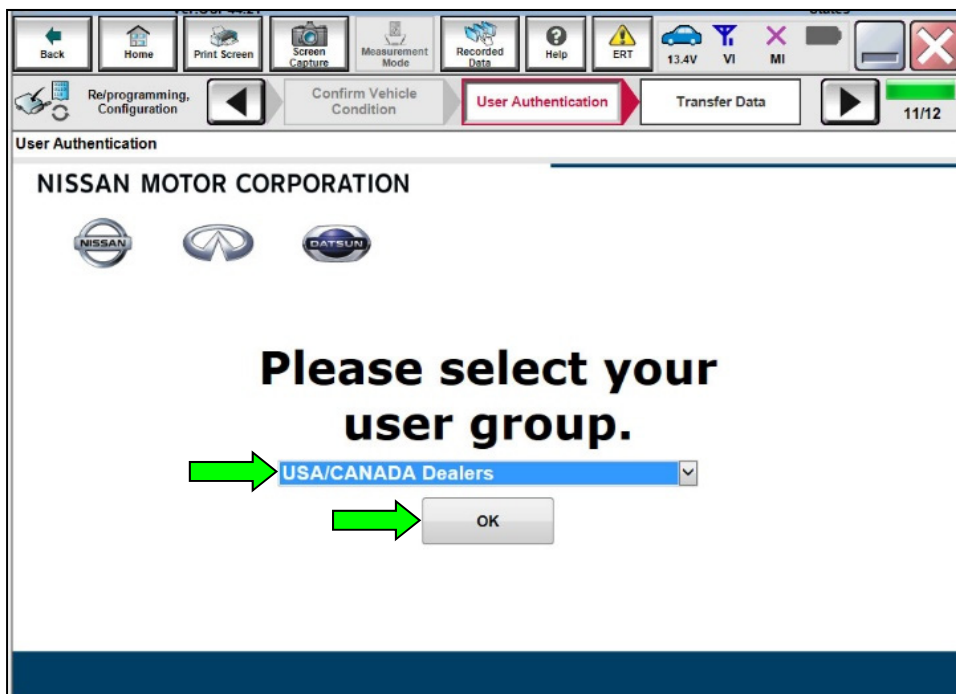


Figure 11



- The screen below displays when the CONSULT PC is not connected to the Internet.

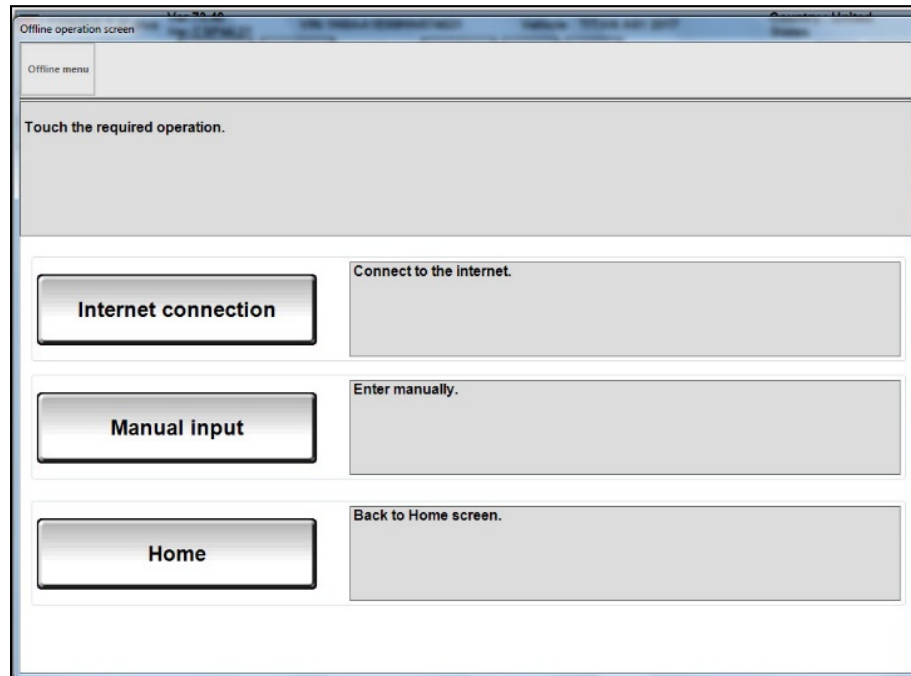


Figure 12

16. Enter your **Username** and **Password**, and then select **Submit**.

**NOTE:** The reprogramming process will begin when **Submit** is selected.

- The CONSULT PC must be connected to the Internet via cable or Wi-Fi.
- If your User Name and Password are not known, contact your Service Manager.

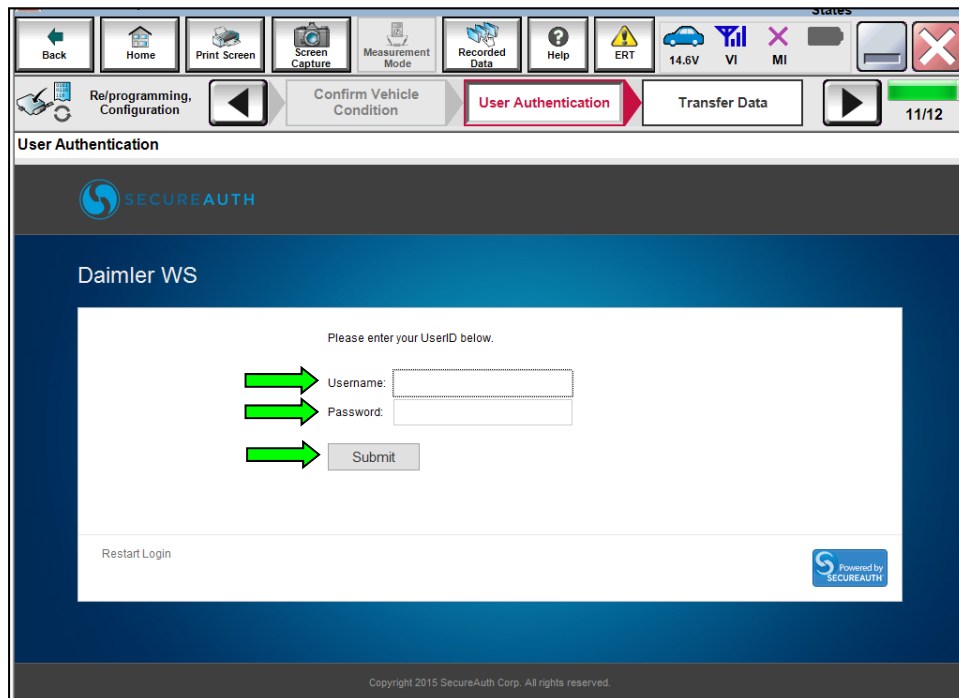


Figure 13

17. When the transfer from the CONSULT PC and plus VI are complete, the screen shown below will display.

18. Select **Next**.

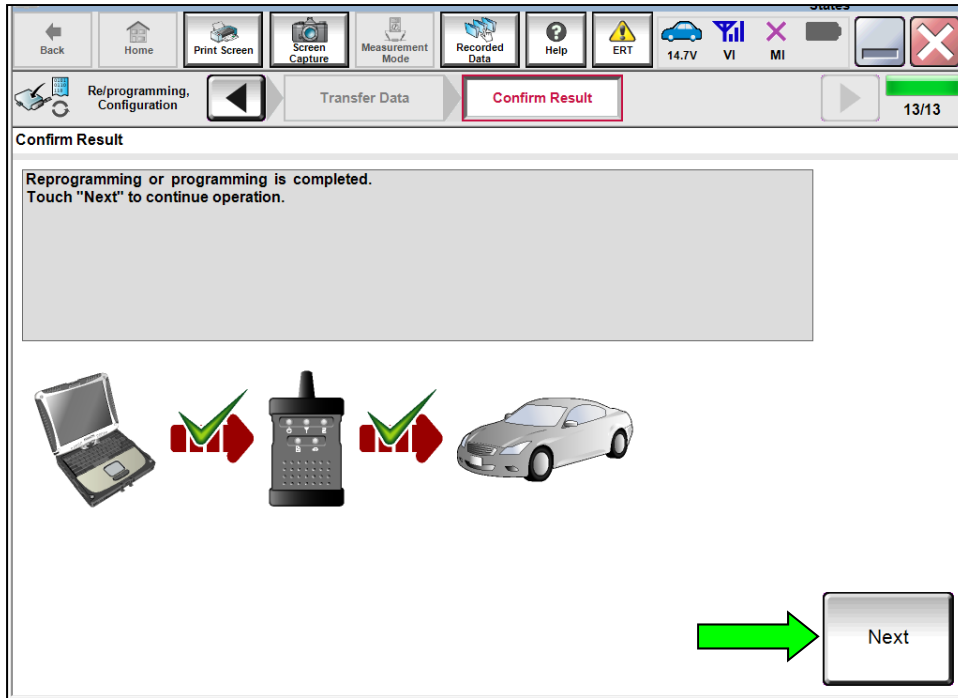


Figure 14

19. Turn the ignition OFF, then ON, and then select **Erase DTC**.

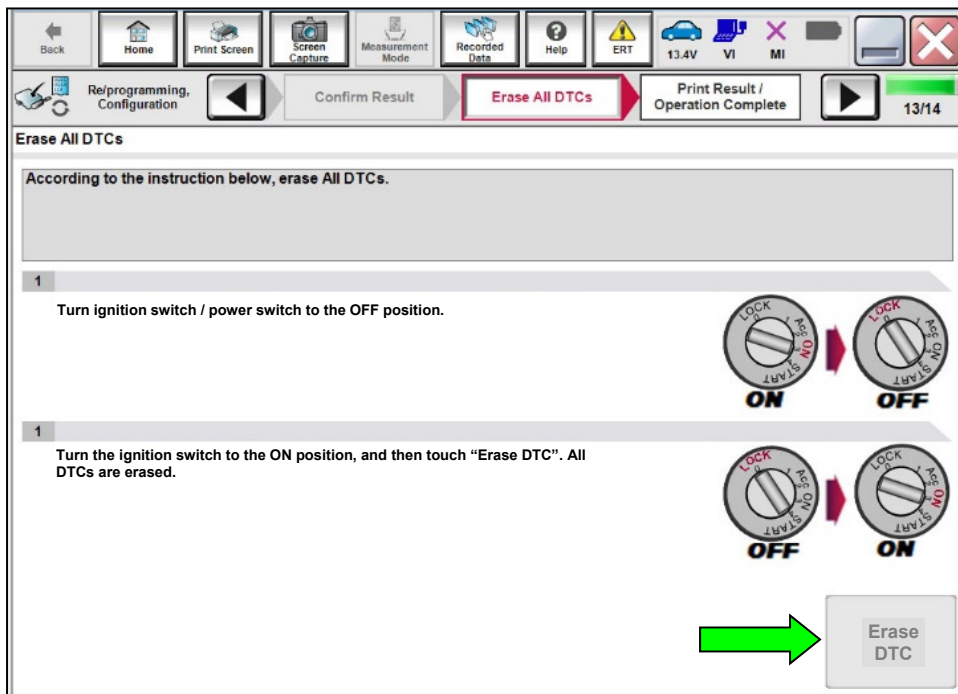


Figure 15

20. When the screen below appears, verify the before and after part numbers are different.

21. Print a copy of the screen below and attach it to the repair order.

**NOTE:** If the screen cannot be printed:

- a. Select **Screen Capture**.
- b. Name the file.
- c. Save the file in My Documents.
  - A copy of the screen is now saved in the CONSULT PC. It can be retrieved and printed at a later time.

22. Select **Confirm**.

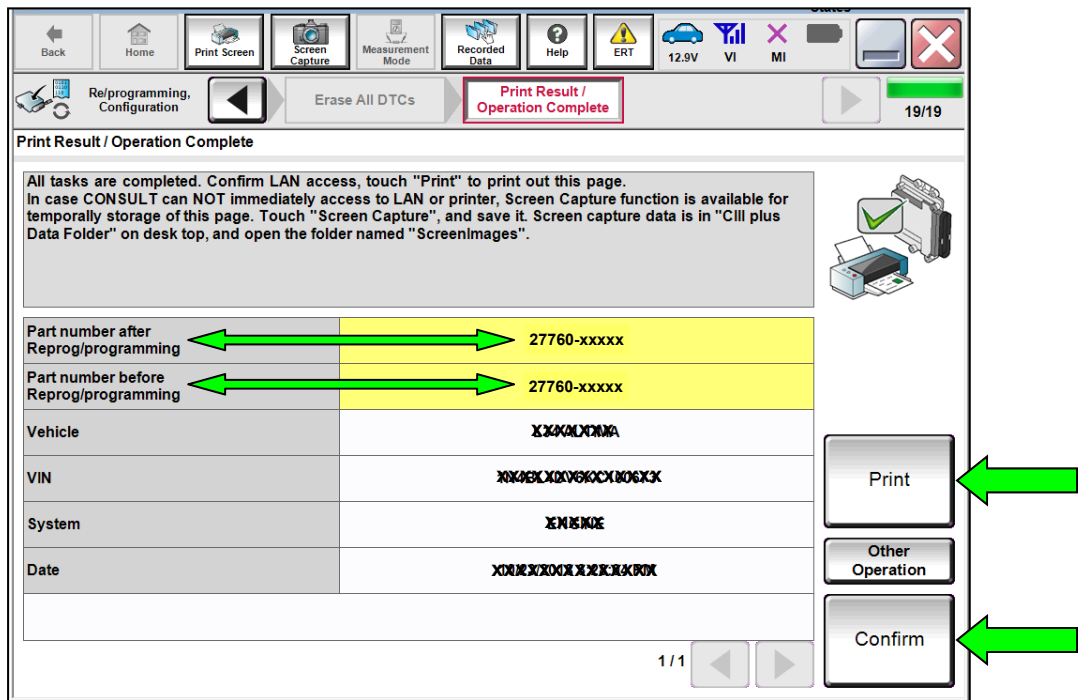


Figure 16

23. Select **Home**.

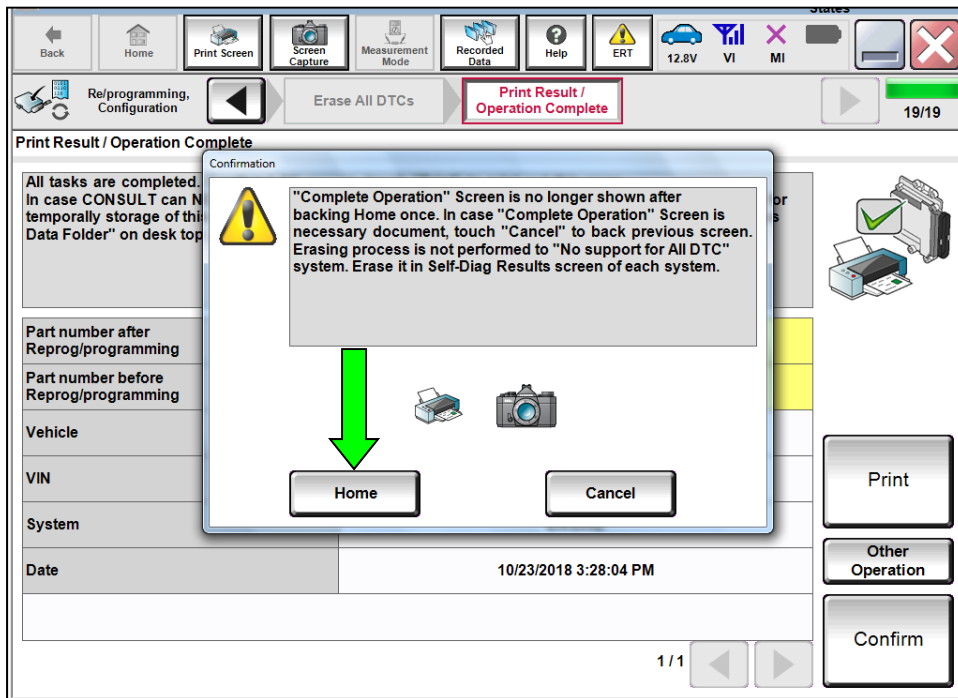


Figure 17

- 24. Close C-III plus.
- 25. Turn OFF the hazard warning lamps.
- 26. Turn the ignition OFF.
- 27. Disconnect the plus VI from the vehicle.

**CLAIMS INFORMATION**

Submit a **Primary Part (PP)** type line claim using the following claims coding:

DESCRIPTION	PFP	OP CODE	SYM	DIA	FRT
Reprogram Auto AC Control Amplifier	(1)	RX7ZAA	ZE	32	0.5

(1) Reference the electronic parts catalog, and use AC Auto Control Amplifier (27760-\*\*\*\*\*) as the Primary Failed Part (PFP).

**AMENDMENT HISTORY**

PUBLISHED DATE	REFERENCE	DESCRIPTION
February 15, 2019	NTB19-013	Original bulletin published