

IMPORTANT INFORMATION

Please inform and provide a copy of this document to every person in your dealership with campaign-related responsibilities, including Service, Parts and Accounting personnel. By law, dealers must correct, prior to delivery for sale or lease, any vehicle that fails to comply with an applicable Federal Motor Vehicle Safety Standard or that contains a defect relating to motor vehicle safety. If you have questions regarding this or any other campaign, please contact Warranty.



Das Auto.

Emissions Recall Circular

Code: **WA00**

**Subject: 1999-2001 Volkswagen Golf/ Jetta and New Beetle
2.0 Liter Gasoline Engine Vehicles
Reprogramming of Engine Control Module and
Replacement of Malfunctioning Oxygen Sensor**

REVISED

September 18, 2013

Revision Summary

- **Work procedure updated to add SVM (Software Version Management) code programming information**
- **Vendor code updated to WWO**

Problem Description

Volkswagen has found that the oxygen sensor in the upper part of the exhaust system could fail under certain conditions, potentially causing a vehicle to exceed Federal and/or California emission standards, or to experience increased fuel consumption. "Thermal shock" within the sensor caused by moisture accumulation could cause oxygen sensor failure. If the oxygen sensor fails, the vehicle's "check engine" light on the dashboard will illuminate.

Corrective Action

Check the emission control system for proper function, reset electronically the engine's control module and replace the oxygen sensor, if necessary.

Affected Vehicles

U.S.A. and Canada

1999-2001 Golf, Jetta and New Beetle

To determine if the VIN applies to this Campaign verify the open Campaigns/Actions screen in ElsaWeb

NOTE:

- *ElsaWeb is the only valid campaign inquiry/verification source. Check ElsaWeb on the day the campaign work will be performed to verify vehicle eligibility for the repair in order to receive claim payment consideration. Campaign status must show "open".*
- *If this repair appears to have already been performed on the vehicle but the code still shows open in ElsaWeb, contact Warranty before proceeding further, e.g. a dealer may have recently performed this repair but not yet entered a claim for it in the system.*
- *ElsaWeb may also show additional open action(s); if so, inform your customer - this work can be done while the vehicle is in for this campaign.*
- *Contact Warranty if you have any questions.*

Parts Information

In some instances, this action may require replacement of the front oxygen sensor, part number 06A 906 262Q. Please ensure a minimum supply available to accommodate repair work, if needed.

Owner Notification Mailing

Volkswagen notified all owners of affected vehicles on or about December 27, 2001. A copy of the owner letter is enclosed for your information.

Requirements for Emissions Campaigns Having Customer Notification (California ONLY)

The California Air Resources Board and the Department of Motor Vehicles (DMV) require emissions-related campaigns to be completed prior to vehicle registration renewal. **When campaign work is done you must provide the owner with a signed "Vehicle Emission Recall – Proof of Correction" certificate (RC EMIS_CAL VW)** which can be ordered at no cost from Resolve at 1-800-544-8021.

NOTE: Ensure owners are aware of the importance of retaining the completed certificate for their records. It should be mailed to the California DMV only upon request.

Emissions Campaign Vehicle Labeling Guidelines (California ONLY)

Vehicles repaired under emission campaigns in the state of California are required by the California Air Resources Board (CARB) to be identified with an emission campaign completion label when the work is performed. It is mandatory for all dealers in the state of California to complete and affix an emission campaign completion label (part number ZVW 010 000) whenever an emissions campaign is performed. Labels can be ordered at no cost from Resolve at 1-800-544-8021

Campaign Completion Labeling Guidelines

Vehicles repaired under this action must be identified with a campaign completion label (part number CAMP 010 000). Labels can be ordered at no cost online via the Compliance Label Ordering portal at www.vwhub.com.

Claim Entry Procedure

Immediately upon completion of the repair work, enter the Applicable Criteria ID and Repair Operation from the following chart. **The Applicable Criteria ID is shown in ElsaWeb.** Claims will only be paid for vehicles that show this campaign open in ElsaWeb on the day of the repair. To help ensure prompt and proper payment, attach the screen print to the repair order.

Saga Claim Entry Procedure

Check ElsaWeb to determine whether the campaign is open.

Service No.: WA00
Damage Code: 0099

Parts Manufacturer

Removed part: Use vendor code WWO
Sold vehicle = 7 10
Unsold vehicle = 7 90

Accounting Instructions

Criteria I.D. 01

Check - Current ECM software level present; NO further work required

Repair operation: 0183 00 99 25 T.U.

OR

Criteria I.D. 01

Reprogram ECM only

Repair operation: 2470 25 99 70 T.U.

OR

Criteria I.D. 01

Perform ECM program update and replace oxygen sensor

Repair operation: 2470 25 99 120 T.U.

<u>Quantity</u>	<u>Part Number</u>	<u>Part Description</u>
1	06A 906 262Q	Oxygen Sensor

There is NO reimbursement for Vehicle Wash or Loaner

If customer refused repairs

Fax the Repair Order to the warranty team at (248) 754-6501 (U.S) and (905) 428-4811 (CAN). Provide the VIN, applicable Service Number, Customer information, Dealer number and date.

Customer Letter Example (U.S.A.)

December 2001

Subject: Recall WA: Reprogramming of Engine Control Module and Replacement of Malfunctioning Oxygen Sensor

Dear Volkswagen Owner:

We are writing to inform you of a potential problem within the emission control system on some 1999 through 2001 model Volkswagen Jetta, Golf and New Beetle 2.0 liter gasoline vehicles. Our records show that you are the owner of one of these vehicles.

What Is The Problem?

Your vehicle is equipped with an oxygen sensor in the exhaust system that provides information to the engine control module. The information the sensor provides is needed to control the fuel and air mixture in the engine at precise levels. Volkswagen of America, Inc. and the Environmental Protection Agency have found that this oxygen sensor could fail under certain conditions, potentially causing your vehicle to exceed emission standards, or to experience increased fuel consumption.

The oxygen sensor failure could be caused by "thermal shock" within the sensor caused by moisture accumulation.

Your vehicle is equipped with an onboard diagnostic system (OBD) which will warn you if certain emission-related failures occur in your car. The oxygen sensor is part of this system as well, and needs to operate correctly to allow the OBD system to do its job. If the oxygen sensor fails, the "check engine" light on your vehicle's dashboard will illuminate. If your vehicle has a "check engine" light on, contact your authorized Volkswagen dealer as soon as possible, to arrange an appointment. However, do not wait for the light to come on before seeking service under this recall notice because the free service provided under this recall will prevent the type of oxygen sensor failure described above.

What Will Volkswagen Do?

Your authorized Volkswagen dealer will check your vehicle's emission control system for proper function, reset electronically the engine's control module and replace the oxygen sensor, if necessary.

What We Would Like You To Do

Please contact the Service Department of any authorized Volkswagen dealer and schedule an appointment as soon as possible. Please present the enclosed "Campaign Authorization" form, which identifies your vehicle to your dealer, when you bring your Volkswagen for this service. The necessary work will take approximately one hour and will, of course, be free of charge.

Please note that this work will be performed free of charge by authorized Volkswagen dealers only. Volkswagen will not pay for any such work performed by non-authorized Volkswagen facilities. Volkswagen will neither reimburse owners for such work, unless it is performed by an authorized Volkswagen dealer, nor will Volkswagen reimburse any service facility which is not authorized by Volkswagen to perform such work.

California Regulations (FOR CALIFORNIA VEHICLES OWNERS ONLY)

California regulations require that this repair be completed prior to the time that you renew your vehicle registration. **Please make sure that this repair is completed prior to the renewal of your vehicle registration** and that you furnish proof of repair to the DMV in the form of a copy of the dealer's repair order including a signed "Emission Campaign Performance Authorization" which is enclosed with this letter. Please retain the signed certification form with your vehicle records. **DO NOT MAIL THIS FORM** to the Department of Motor Vehicles (DMV), unless requested.

If you are the lessor and registered owner of the vehicle identified in this action, please forward this information immediately by first class mail to the lessee.

The information in this document is intended for use only by skilled technicians who have the proper tools, equipment and training to correctly and safely maintain your vehicle. These procedures are not intended to be attempted by "do-it-yourselfers," and you should not assume this document applies to your vehicle, or that your vehicle has the condition described. To determine whether this information applies, contact an authorized Volkswagen dealer. ©2013 Volkswagen of America, Inc. and Volkswagen Canada Inc. All Rights Reserved.

Precautions

If the "check engine" light on your instrument panel comes on prior to the completion of this service, please contact your Volkswagen dealer immediately for scheduling the necessary repair.

Reimbursement of Expenses

Please write to us at the address below, if you have incurred out of pocket expenses for replacement of the oxygen sensor, and we would be pleased to review your request for possible reimbursement. Please include any receipts you have.

*Volkswagen of America, Inc.
Attn: Customer Relations – Hills East (WA)
3499 West Hamlin Road
Rochester Hills, MI 48309
1-800-893-5298*

We regret any inconvenience this matter may cause; however, we want to make sure that your vehicle complies with applicable emission requirements and performs to your satisfaction.

Thank you for driving a Volkswagen.

Sincerely,

John von Hollen
Product Compliance

Customer Letter Example (CANADA)

December 2001

Subject: Recall WA: Reprogramming of Engine Control Module and Replacement of Malfunctioning Oxygen Sensor

Dear Volkswagen Owner:

We are writing to inform you of a potential problem within the emission control system on some 1999 through 2001 model Volkswagen Jetta, Golf and New Beetle 2.0 liter gasoline vehicles. Our records show that you are the owner of one of these vehicles.

What Is The Problem?

Your vehicle is equipped with an oxygen sensor in the exhaust system that provides information to the engine control module. The information the sensor provides is needed to control the fuel and air mixture in the engine at precise levels. Volkswagen Canada Inc. has found that this oxygen sensor could fail under certain conditions, potentially causing your vehicle to exceed emission standards, or to experience increased fuel consumption.

The oxygen sensor failure could be caused by "thermal shock" within the sensor caused by moisture accumulation.

Your vehicle is equipped with an onboard diagnostic system (OBD) which will warn you if certain emission-related failures occur in your car. The oxygen sensor is part of this system as well, and needs to operate correctly to allow the OBD system to do its job. If the oxygen sensor fails, the "check engine" light on your vehicle's dashboard will illuminate. If your vehicle has a "check engine" light on, contact your authorized Volkswagen dealer as soon as possible, to arrange an appointment. However, do not wait for the light to come on before seeking service under this recall notice because the free service provided under this recall will prevent the type of oxygen sensor failure described above.

What Will Volkswagen Do?

Your authorized Volkswagen dealer will check your vehicle's emission control system for proper function, reset electronically the engine's control module and replace the oxygen sensor, if necessary.

What We Would Like You To Do

Please contact the Service Department of any authorized Volkswagen dealer and schedule an appointment as soon as possible. Please present the enclosed "Campaign Authorization" form, which identifies your vehicle to your dealer, when you bring your Volkswagen for this service. The necessary work will take approximately one hour and will, of course, be free of charge.

Please note that this work will be performed free of charge by authorized Volkswagen dealers only. Volkswagen will not pay for any such work performed by non-authorized Volkswagen facilities. Volkswagen will neither reimburse owners for such work, unless it is performed by an authorized Volkswagen dealer, nor will Volkswagen reimburse any service facility which is not authorized by Volkswagen to perform such work.

If you are the lessor and registered owner of the vehicle identified in this action, please forward this information immediately by first class mail to the lessee.

Precautions

If the "check engine" light on your instrument panel comes on prior to the completion of this service, please contact your Volkswagen dealer immediately for scheduling the necessary repair.

Reimbursement of Expenses

Please write to us at the address below, if you have incurred out of pocket expenses for replacement of the oxygen sensor, and we would be pleased to review your request for possible reimbursement. Please include any receipts you have.

*Volkswagen Customer Relations (WA)
P. O. Box 842 STN A
Windsor ON N9A 9Z9
1-800-893-5298*

We regret any inconvenience this matter may cause; however, we want to make sure that your vehicle complies with applicable emission requirements and performs to your satisfaction.

Thank you for driving a Volkswagen.

Sincerely,

John von Hollen
Product Compliance

If there are questions regarding the work procedure:

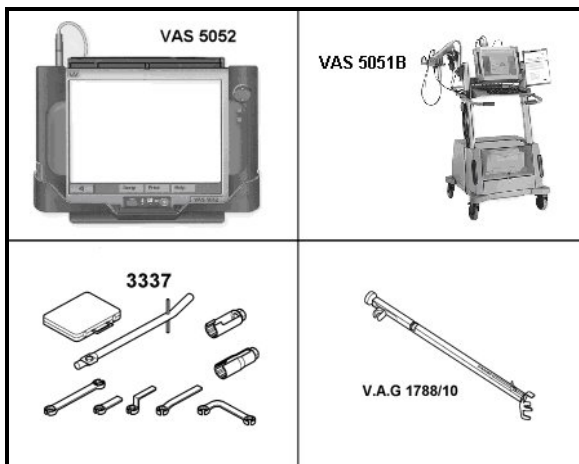
- U.S. dealers, contact Warranty
- Canadian dealers, open an VTA ticket using concern group “Compliance_Recall Assistance (C)”

Read this work procedure completely before doing any work. This procedure describes re-programming the engine control module (ECM) and, if necessary, replacing the front oxygen sensor. Some affected vehicles, however, may not require re-programming of the ECM, which will be made apparent during the checking process. This new procedure **does not** require use of the VAS 6103 serial port cable.


Please Note: If performing this Campaign using an ODIS equipped scan tool, proceed to Appendix section at the end of this publication.

Special Tools and Equipment

- PSC 550S or INC 940 Battery charger

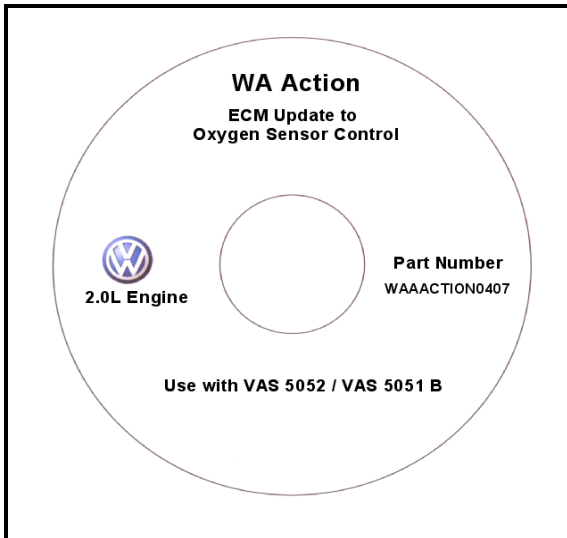


⇐ VAS 5052 Diagnostic Tester is recommended

 Tip: VAS 5051B Diagnostic Tester can also be used; however, on occasions it may not start the update programming process after update programming has been selected

⇐ 3337 Tool

⇐ VAG 1788/10 Engine speed adjuster

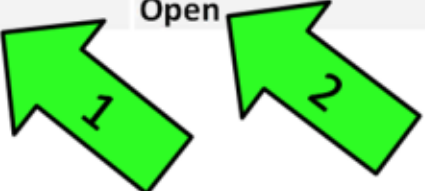


⇐ CD ROM containing reprogramming information (part number (WAAACTION0407) **supplied by VWoA**

⚠ Note: **DO NOT DUPLICATE CD**
A copied CD may not perform the
reflash update properly

Work Sequence

Applicable Criteria ID (s)	Campaign/Action Status
01	Open


EXAMPLE



Tip: If Campaign Completion label is present, no further work is required

Section A – Identify Criteria and Check for Open Status



Tip: On the date of repair, print this screen and keep a copy with the repair order.

- Enter the VIN in ElsaWeb and proceed to the “Campaign/Action” screen.
- ← Ensure that the Status is “Open” <arrow 2>.
- ← Note the Applicable Criteria ID <arrow 1> for use in determining the correct work to be done and associated parts.


Continue to Section B



Note: When performing the update programming procedure, ALL DTCs for all control units are erased. Always first address stored DTCs for customer concerns unrelated to the flash procedure




Note: The following “Update – Programming” process may overwrite any “TUNED” ECM programming. The dealership should advise owner accordingly and get owner’s written consent to perform the update procedure

 Note: Battery **MUST** have a minimum no load charge between 12.5V and 14.5V **(failure to maintain voltage during update process can lead to control module failure)**

VAS 5051B must be connected to vehicle and 110V AC power supply at all times during update programming

VAS 5052 must be connected to vehicle and battery voltage requirements maintained

Any appliances with high electromagnetic radiation (e.g. mobile phones) switched OFF

 Note: Use PSC 550S or INC 940 battery charger to maintain vehicle battery voltage

SECTION B- ECM DTC Interrogation



⇐ Connect diagnostic tester to vehicle data link connector -arrow- using standard diagnostic tester cable

- Turn ignition switch to “ON” position



⇐ On diagnostic tester start-up screen, press “Vehicle Self-Diagnosis” button

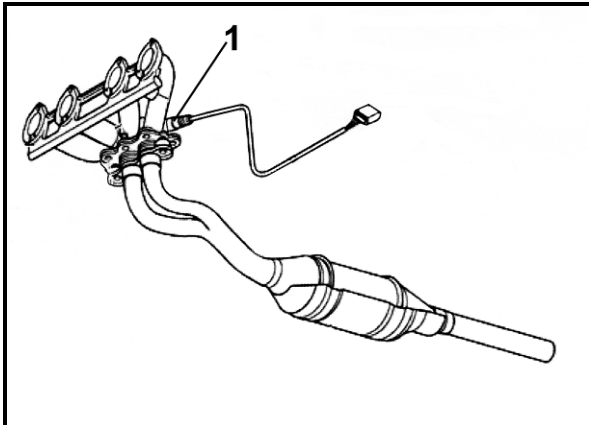
- Select Onboard Diagnostics (OBD)
- Select “01 - Engine electronics”
- Select “004 – DTC Memory content” and check for DTCs
- If DTC is present for the front oxygen sensor, print DTC information, turn ignition switch to “OFF” position, disconnect diagnostic tester from vehicle and **proceed to SECTION C**



Tip: DTC print-out must remain with dealership’s repair order copy!

- If no front oxygen sensor DTC is present, **go to SECTION D**

SECTION C – Front Oxygen Sensor Replacement



- Disconnect wire harness connector from oxygen sensor
- ← Use special tool 3337 to remove front oxygen sensor -1- from exhaust manifold

⚠ Note: Coat threads of new oxygen sensor, 06A 906 262Q, using anti-seize compound marked “safe for oxygen sensors”. Do not allow compound to enter slots on sensor body

- Install new oxygen sensor (06A 906 262Q) and tighten to 50 Nm (37 ft. lbs.)
- Reconnect oxygen sensor to wire harness;
proceed to SECTION D

SECTION D – ECM Reprogramming

- Connect a Volkswagen approved battery charger to vehicle and check battery voltage to ensure it is greater than 12.5 V and less than 14.5 V
- If oxygen sensor was replaced, reconnect diagnostic tester to vehicle and switch ignition to “ON” position
- Insert CD ROM, (WAAACTION0407) into diagnostic tester as soon as the start screen is displayed

⚠ Note: Nonobservance of the following points may lead to ECM failure!

VAS 5052 or 5051B must always be connected to the approved power supply at approved voltages. Under no circumstances should the power supply be interrupted or the diagnostic connector unplugged during the flash procedure

Any appliances with high electromagnetic radiation (i.e. mobile phones) must be switched OFF

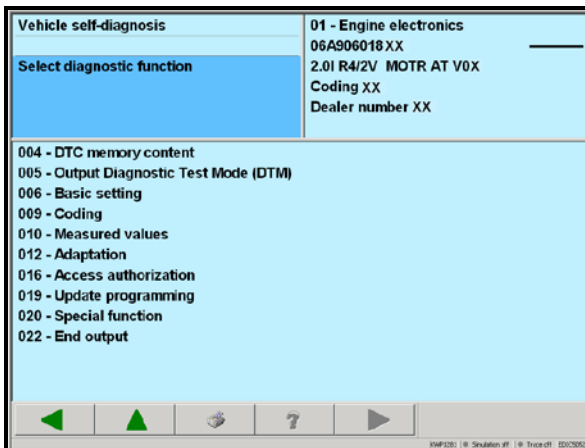


Tip: You must return to the start screen before starting a new update programming session, otherwise the update programming CD will not be recognized by the diagnostic tester

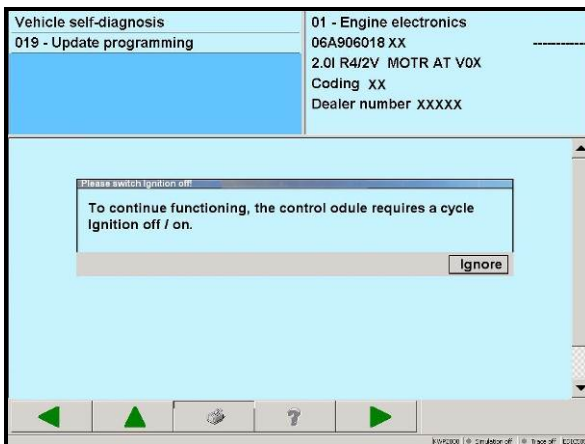
- If VAS 5052/5051B was disconnected, reconnect it to vehicle data link connector using standard diagnostic tester cable

← On diagnostic tester start-up screen, press “Vehicle Self-Diagnosis” button

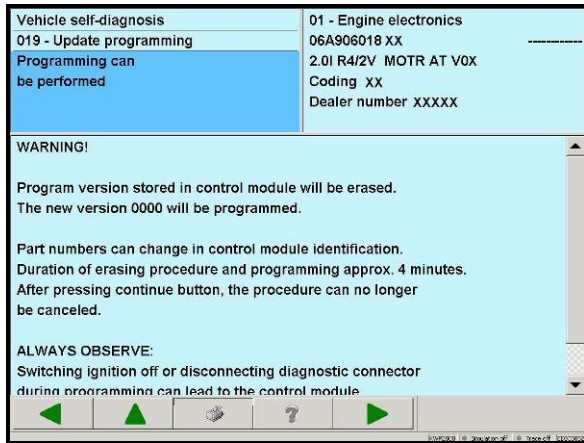
- Select Onboard Diagnostics (OBD)
- Select “01 - Engine electronics”




← Select “19 - Update programming”



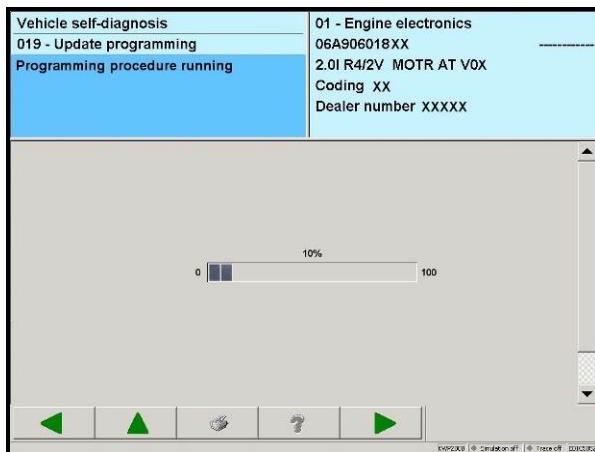
← This screen is displayed; switch ignition “OFF” and ON”



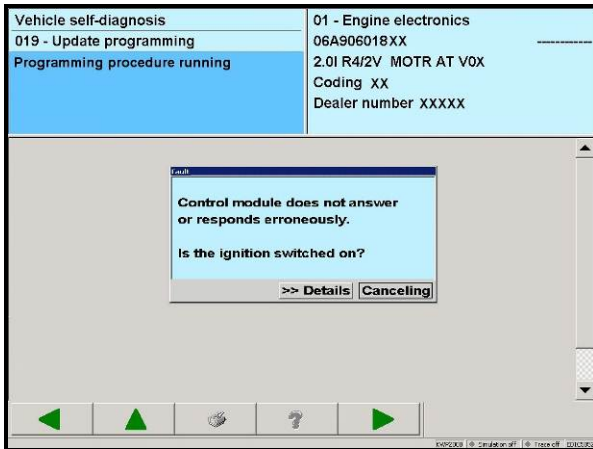
← Read information displayed on WARNING! screen and press the forward arrow button


 **Tip:** When using a VAS 5051B, if this WARNING! screen is not displayed and a different screen showing message “The EDIABAS does not deliver a system error” is displayed, press “Canceling” button and another screen instructing to turn ignition switch “OFF” and “ON” will be displayed. Press “Ignore” button and tester will return to “01 - Engine Electronics.” Disconnect VAS 5051B from vehicle and connect VAS 5052. If there is no access to ECM, exit program, start vehicle and run for a few seconds and shut off. ECM access should be available

If update programming cannot be started, please call 1 (800) 741-2919 and ask for technical assistance

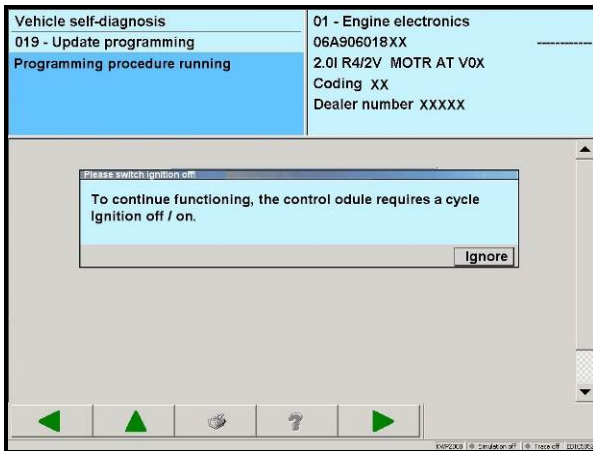


← Programming progress screen is displayed and update programming begins




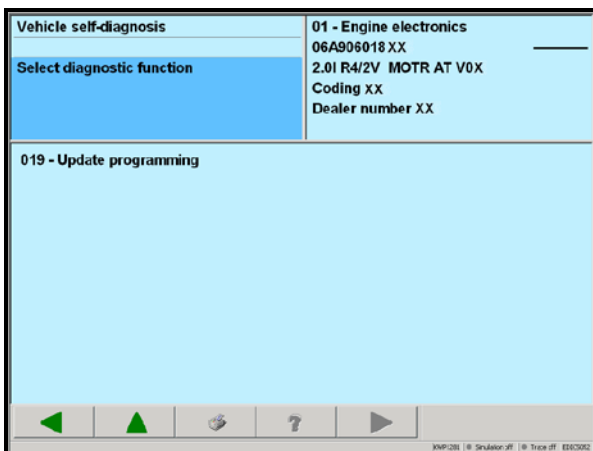
 Tip: This illustration and the following two illustrations are steps to do if the update programming stops before 100% completion

⇐ If at any time during the update programming this screen appears press the “Canceling” button



⇐ After pressing the “Canceling” button this screen is displayed. Press “Ignore” button and tester will return to control module selection screen. **DO NOT** switch ignition “OFF” and “ON” or control unit **will be destroyed**

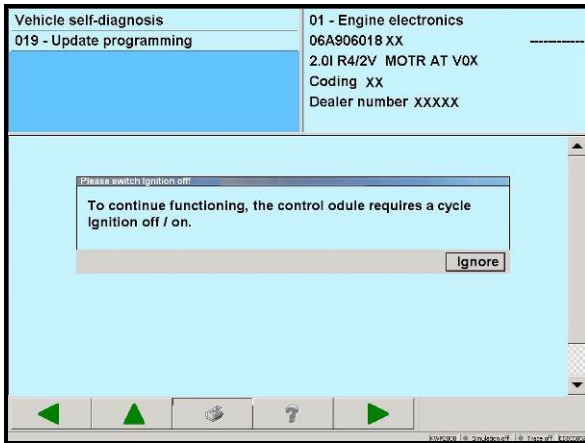
 Note: Once the update programming process has been initiated, the ignition switch must not be turned “OFF” until the update programming reaches 100% or the control unit will be destroyed



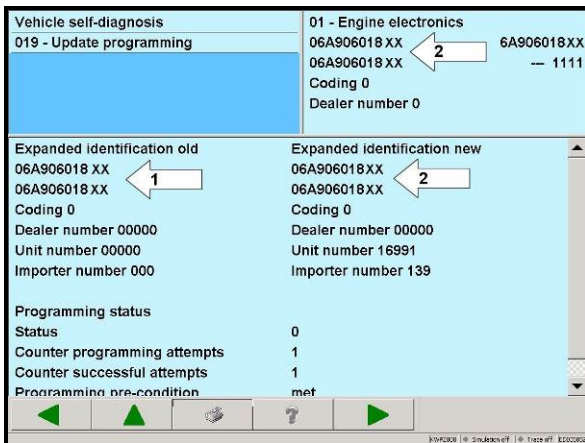
- Select “01 - Engine electronics”

⇐ Select “19 - Update programming”

⇐ Press the forward arrow button and update programming progression screen will be displayed and update programming will be restarted




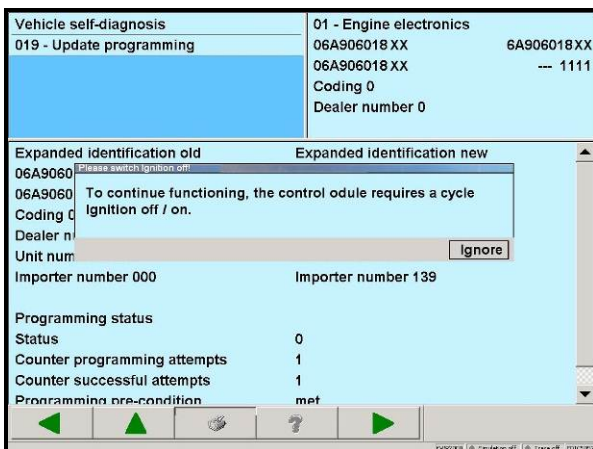
⇐ After update programming is 100% complete, switch ignition “OFF” and “ON”



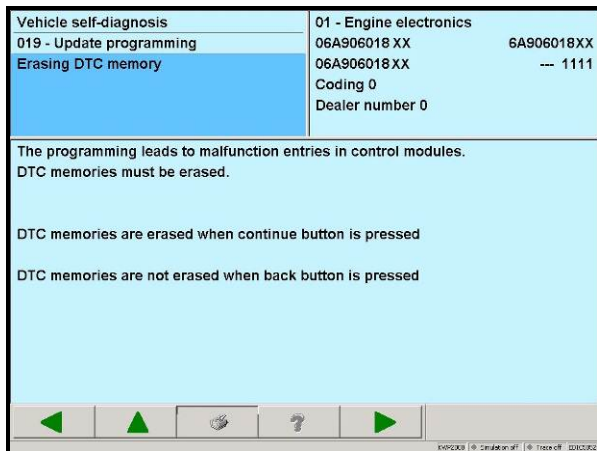
⇐ Screen displays previous control unit part number -arrow 1- and new control unit part number -arrow 2-

- Make a screen print and attach to work order
- Press forward arrow button

 **Tip:** If update programming stopped and needed to be restarted, this screen may not be displayed. Another screen showing a message “The EDIABAS does not deliver a system error” can be displayed. Press the “Canceling” button and another screen instructing to turn ignition switch “OFF” and “ON” will be displayed. Press “Ignore” button and tester will return to “01 - Engine electronics” showing new ECM part number and software level. Erase DTCs in ECM and go to Section D




⇐ Switch ignition “OFF” and “ON”



← Press the back arrow button

- Erase DTCs in ECM; **proceed to SECTION E**

Section E – Code Control Module

 Note: Although a code may be shown in the upper right hand corner of screen, the control unit still must be coded


- Select “016 - Access authorization” and press forward arrow button
- Press buttons -1-, -2-, -8- and -3- to input login code 1283
- Press -Q- button to confirm
- Press return arrow button two times when “Function Performed Successfully” comes on in upper left corner of screen
- Select “009 – Coding” and press forward arrow button

Engine control module coding, MY 1999

Transmission	ABS	Coding
Manual	Yes	00000
Automatic	Yes	00001
Manual	No	00040
Automatic	No	00041


Engine control module coding, MY 2000 >


Transmission	ABS	Air Bag	Coding
Manual	No	No	00001
Manual	Yes	No	00011
Manual	No	Yes	00021
Manual	Yes	Yes	00031
Automatic	No	No	00003
Automatic	Yes	No	00013
Automatic	No	Yes	00023
Automatic	Yes	Yes	00033

 Note: Although a code is shown in the upper right hand corner of screen, the control unit still must be coded

⇐ Enter relevant code number for vehicle noting model year and options

- Press -Q- button to confirm input

 Tip: Message “Function is unknown or cannot be carried out” is displayed if an unauthorized code number has been entered

 Tip: ECM identification and coding are displayed in upper right corner of screen

- Press return arrow button twice when “Coding of vehicle completed” appears on screen in upper left corner; **proceed to Section F**

SECTION F - Create Engine Readiness Code

Requirements for Generating Engine Readiness Code:

- Vehicle in stationary position
- Automatic transmission selector lever in P (Park) or N (Neutral) position
- Turn off all electrical consumers (e.g. lights and rear window defroster)
- Throttle valve angle less than 10 % ⇒ Display Group 3, display field 3
- Coolant temperature at least 85°C ⇒ Display Group 4, display field 3
- Intake air temperature less than 60°C ⇒ Display Group 4, Display Field 4
- Select “006 – Basic setting” and press forward arrow button
- Press buttons -9- & -8- for Display Group 98: Throttle Body Adaptation
- Press “Q” button to confirm
- Press return arrow button when “ADP. O.K.” is on screen
- Start engine and let idle

- Press buttons -7- & -7- for Display Group 77: Secondary Air Check
- Press “Q” button to confirm



Tip: Test may not start until temperature (on screen) reaches approx. 76.5°C

- Press return arrow button when “Syst. OK” is on screen
- Press buttons -7- & -0- for Display Group 70: EVAP System
- Press “Q” button to confirm



Tip: Test may not start until temperature (on screen) reaches approx. 76.5°C

- Press return arrow button when “TBV OK” is on screen
- Press buttons -7- & -1- for Display Group 71: Leak Test EVAP System
- Press “Q” button to confirm
- Press return arrow button when Syst. OK is on screen
- Press buttons -3- & -4- for Display Group 34: Oxygen Sensor Aging
- Press “Q” button to confirm
- Using VAG 1788/10 set engine speed to 2200 - 2800 RPM



Tip: Test may not start until temperature (on screen) is higher than 352.0°C

- Press return arrow button when B1-P1. OK is on screen

- Press buttons -4- & -6- for Display Group 46: Catalytic Converter
- Press “Q” button to confirm
- Using VAG 1788/10 set engine speed to 2800 - 3200 RPM



Tip: Test may not start until temperature (on screen) is higher than 352.0°C

- Press return arrow button when Cat “B1 OK” is on screen
- Remove VAG 1788/10 from vehicle to bring engine down to idle
- Press return arrow button two times
- Select “020 – Special functions” and press forward arrow button
- Select “020.01 Readiness code” and press forward arrow button
- Readiness code should read 00000000 test complete
- Press “Print” button for copy to attach to repair order
- Press return arrow button
- If vehicle has automatic transmission, turn ignition switch to “OFF” position, press return arrow button two times and proceed to Section F; otherwise, go to next step
- Select “022 - End Output”
- Switch ignition to “OFF” position



Note: The coding values entered and shown on display will not be used by the Motronic Control Module UNTIL the ignition has been switched OFF once

- Disconnect VAS 5052 / 5051B diagnostic cable harness from data link connector

Section G – Automatic Transmission - Initiating Basic Settings

- Turn ignition switch to “ON” position
- Select “02 – Gearbox Electronics” and press forward arrow button
- Select “006 - Basic Settings” and press forward arrow button
- Press -0- button for Display Group 0: Basic Setting
- Press “Q” button to confirm
- Depress accelerator pedal as far as kick down and hold in this position for 3 seconds
- Press return arrow button
- Select “022 - End output”
- Release accelerator pedal
- Print diagnosis log showing readiness has been completed and attach to R.O.
- Switch ignition to “OFF” position



Note: The coding values entered and shown on display will not be used by the Motronic Control Module UNTIL the ignition has been switched OFF once

- Disconnect VAS 5052 / 5051B diagnostic cable harness from data link connector
- Destroy and properly dispose of any removed parts

Proceed to Section H

Section H – Campaign Completion Label and Parts Return/Disposal

Install Campaign Completion Label

Campaign Completion	
SAGA CODE:	
DLR #:	
REPAIR DATE:	
	CAMP 010 000

- Open hood
- ↳ Fill out and affix Campaign Completion label, part number CAMP 010 000, next to the vehicle emission control information label



Tip: Ensure Campaign Completion label does not cover any existing label(s)

- Close hood

Parts Return/Disposal

Properly destroy and dispose of removed parts in accordance with all state/local requirements once the parts are listed on the Parts Destruction and Core Disposition report, unless otherwise indicated and/or requested for return.

ALL WORK IS COMPLETE

Appendix A: Performing ECM software update via Software Version Management (SVM). For use with ODIS equipped scan tools.



Tip:

To Update-Programming using SVM, **review and follow** instructions in **Technical Bulletin Instance 2014603** "Software Version Management".

The SVM Process must be completed in its entirety so the database receives the update confirmation response. A warranty claim may not be reimbursed if there is no confirmation response to support the claim.



Note:

Prior to launching VAS-PC application and starting control module update process, confirm tester screen saver and power settings in accordance with ServiceNet=> Workshop Equipment=> VAS Tester=> Service Information=> 2012=> Circular # VVT-12-02. Failure to do so may result in the tester entering power save mode during data transfer, and subsequent control module failure.

When using a VAS 6150/5051B or VAS 5052A tester in conjunction with a VAS 5054A wireless transmitter head for a flash procedure, please connect a USB cable between the transmitter head and the tester. Failure to do so may lead to errors during the flash procedure.

VAS tools must only be used with their power adapters plugged in. Under no circumstances should they be used on battery power alone during the programming procedure.



Note:

Battery **MUST** have a minimum no load charge between 12.5V and 14.5V (failure to maintain voltage during update process can lead to control module failure).

VAS 5051B must be connected to vehicle and 110V AC power supply at all times during update programming.

VAS 5052 must be connected to vehicle and battery voltage requirements maintained. Any appliances with high electro-magnetic interference sources (e.g. mobile phones, Bluetooth) switched OFF.

- Update the Engine Control Module using the SVM Unit code as listed in the table below:

Model	Module	New Software Part Number	New Software Version (or higher)	SVM Action Code
All	ECM (AW_01)	All	All	3060

- Once the SVM update is complete, follow the instructions in [Sections E, F, G, and H](#) for coding information, vehicle readiness, transmission basic settings, and proper vehicle labeling instructions.



Note:

The ECM coding **MUST** be performed after the SVM update is complete.



**OWNER INFORMATION ABOUT CONTROL MODULE TUNING*
ACKNOWLEDGEMENT AND AUTHORIZATION FOR
REPROGRAMMING (REFLASHING) OF CONTROL MODULE(S)**

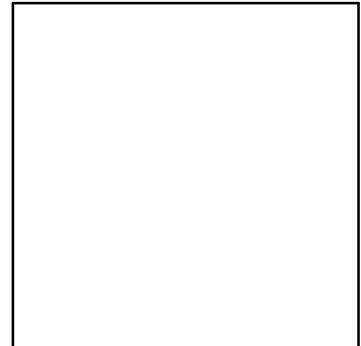
*) "TUNING" is described as the addition of or modification of any component which causes a Volkswagen vehicle to perform outside the normal parameters and specifications approved by Volkswagen Group of America / Volkswagen Group Canada.

Date: _____

Dealer Number: _____

Vehicle Identification Number: _____

Repair Order Number: _____



Dealer stamp

I _____, owner or driver of the above identified Volkswagen, confirm:

"Tuning" as described above (especially power increasing modifications) has NOT been performed on my vehicle.

"Tuning" as described above has been performed on my vehicle and the following components were modified or installed:

TUNING was performed by (Please provide Company name and telephone number, if you wish us to contact them):

I understand that if my Control Module is determined to have been tuned, any damage caused by the tuning of the Control Module (including adverse emissions consequences) will not be covered by VWGoA / VGC warranties.

I am permitting an authorized Volkswagen Dealer to reflash (update) my Control Module, and by doing so, I understand that this process will automatically overwrite (destroy) and permanently delete any tuning program that was previously installed on the Control Module of my Volkswagen vehicle.

By signing below, I fully acknowledge and understand that the tuning program will not be restored and VWGoA / VGC, will not be liable in any way for the loss of tuning data.

Signature of Customer