

# Technical Bulletin



Model(s)	Year	Eng. Code	Trans. Code	VIN Range From	VIN Range To
Routan	2009-2012	All	All	All	All

## Condition

58 12 03 October 26, 2012 2029303 Supersedes T.B. V581201 dated June 6, 2012 to update parts table.

### Sliding Door Trim Contacting Vehicle Rear Quarter

The customer may experience a door trim panel contacting the quarter panel on either side when opening either of the sliding doors.

## Technical Background

This bulletin involves installing an additional door panel retention point to prevent the door panel from bowing and contacting the body when the sliding door is opened.

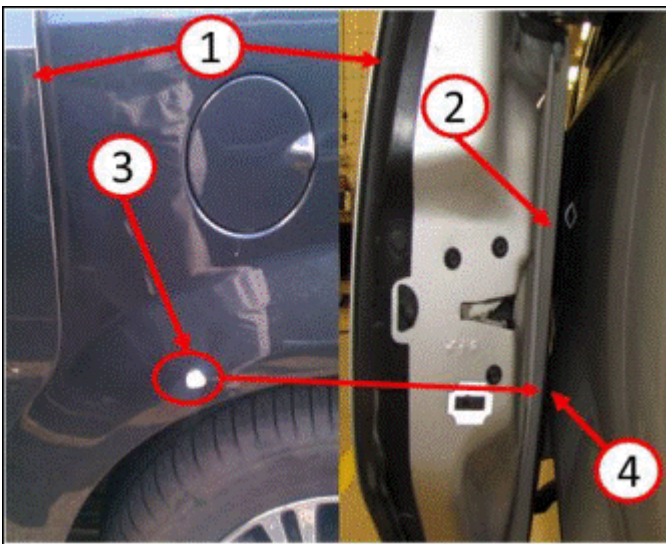
## Production Solution

Optimized door panels MY2013.

## Service

### Diagnosis

In some instances interior door panel to quarter panel contact has been noted on both left and right sides of the vehicle. Design clearances of the interior door panel are aggravated by heat which causes the door panel to relax and bow, which may contact the rear quarter panel (Fig. 1). In order to correct this condition and avoid costly paint repairs an additional retention point needs to be added to prevent the door panel bowing condition. If the customer describes the symptom, perform the Repair Procedure.

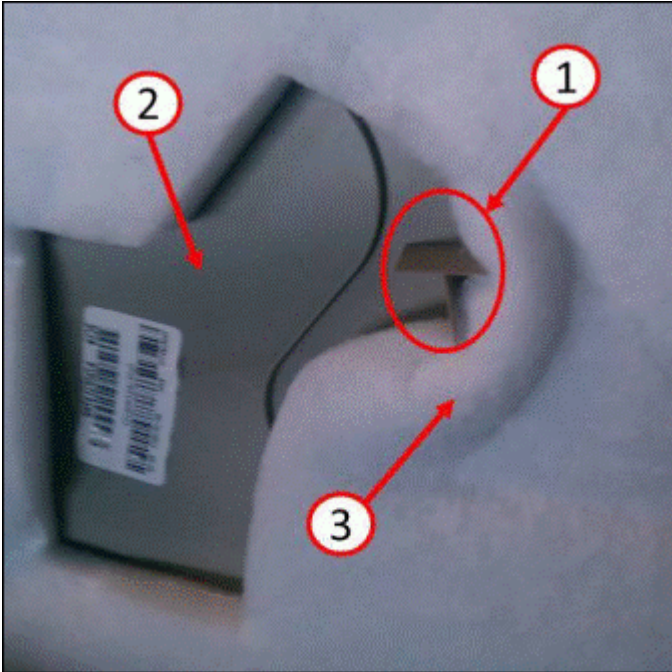


- 1- Sliding door
- 2- Interior door trim panel
- 3- Quarter panel contact point
- 4- Panel Clearance area

Figure 1



## Repair Procedure



- Remove both side door trim panels.
- Remove the standoff from the back side of each door panel.

- 1- Standoff
- 2- Back side of door panel
- 3- Sound deadener

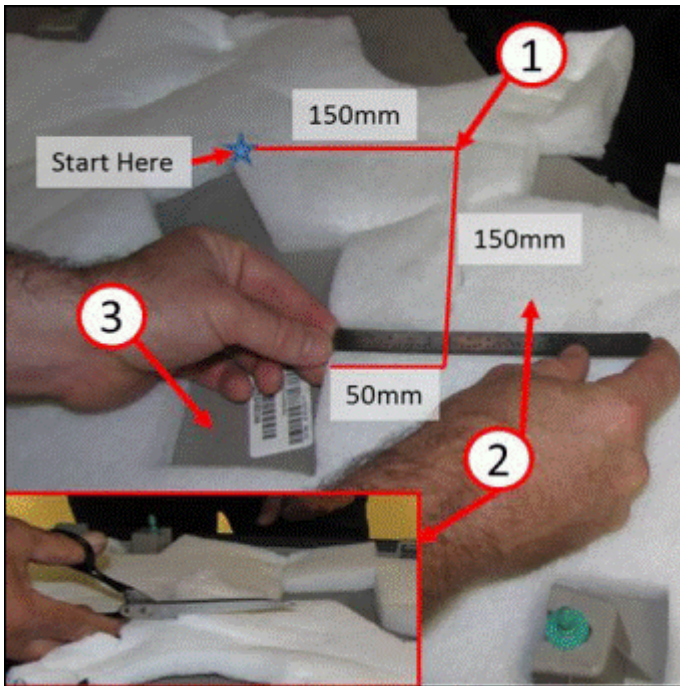
Figure 2



### Example

Standoff removed.

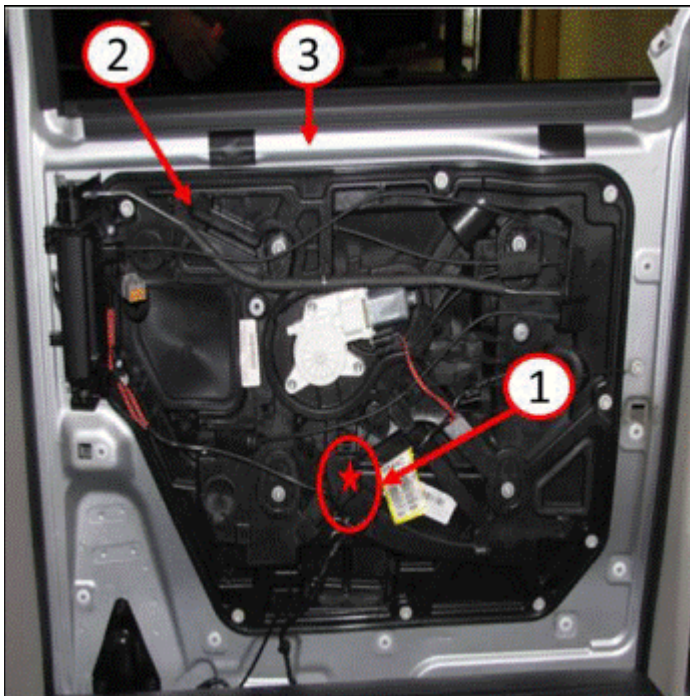
Figure 3



- Cut the sound deadener on the back side of each door panel as shown.

- 1- Cut line
- 2- Sound deadener
- 3- Back side of door panel

Figure 4



- Carefully drill a 5/16" (8mm) hole through the carrier plate at the center of the formation/standoff (1) directly above the door module (if equipped) or just forward of the part number tag.

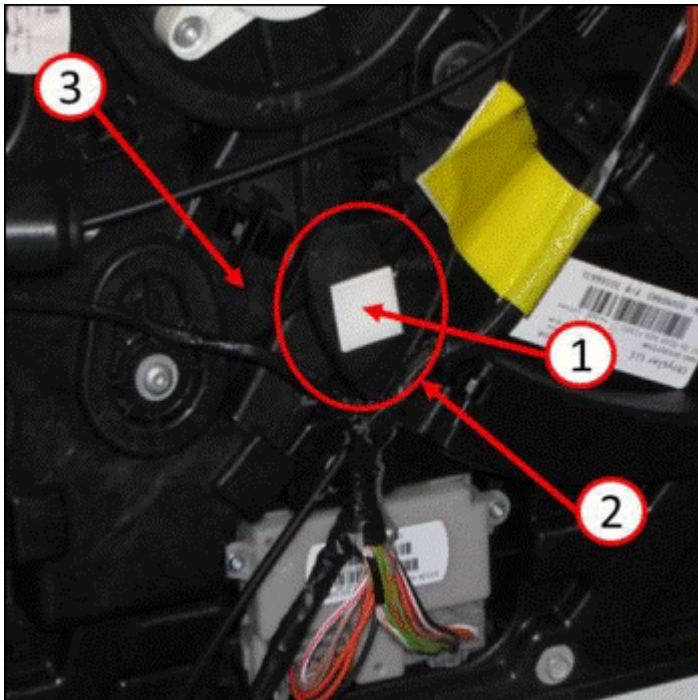


**Note:**

Make sure door window is in the full upward position before drilling hole in door carrier plate.

- 1- Drill location
- 2- Door carrier plate
- 3- Sliding door

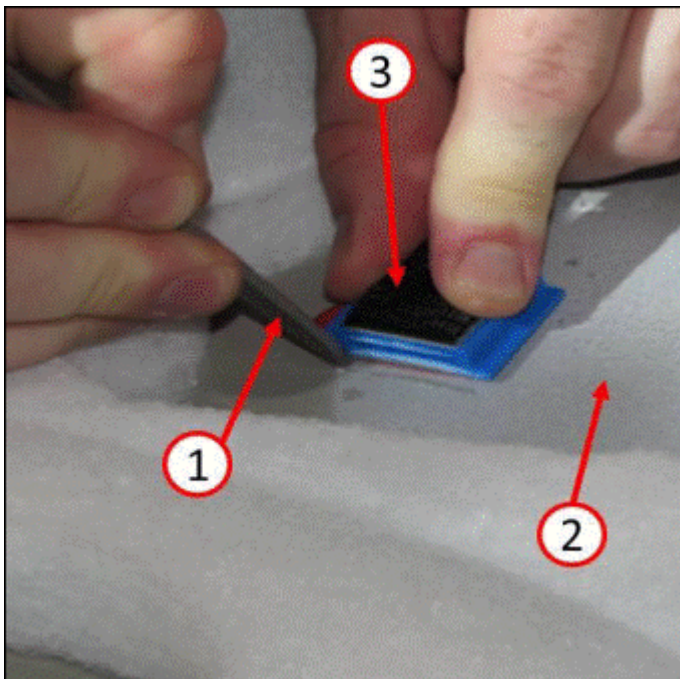
Figure 5



- Fully seat the white dual lock push clips (1) from repair kit into the 5/16" (8mm) hole in the door carrier plate on both sides.

- 1- Dual lock push clip
- 2- Drilled hole location
- 3- Door carrier plate

Figure 6



- Temporarily engage the dual lock halves in order to transfer the clip location from the module to the door panel using talcum powder or equivalent and scribe the clip location on the back side of the door panel.

- 1- Scribe
- 2- Back side of door panel
- 3- Dual lock retaining clip

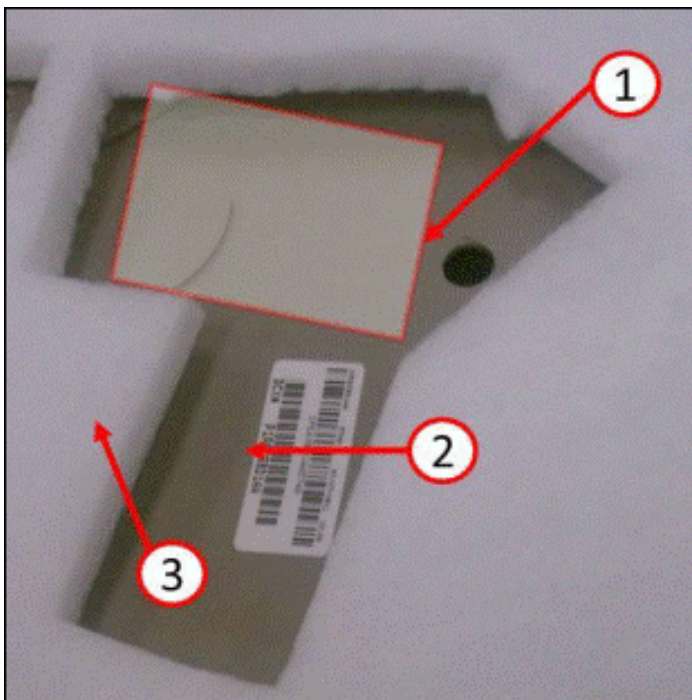
Figure 7



**! Note:**

Door trim panel(s) will need to be rough set and pressurized to transfer the contact location. Talcum powder should be applied to the approximate clip location on the back side of the door trim panel.

DO NOT engage dual lock halves and remove peel-off backing to locate the door trim panel side of the clip as this could result in an improperly placed clip while reinstalling the door panel. Improperly placing the clip can possibly destroy it if removal or repositioning is required. Do not use grease to transfer clip location as this will leach into the plastic surface of the trim panel and affect clip adhesive retention.



- Clean the surface area (1) of both door trim panels to be bonded, with isopropyl alcohol.
- Once the alcohol has evaporated apply 3M™ 4298 adhesion promoter or equivalent to the surface area (1) where the dual lock adhesive backer will bond.

- 1- Clip bonding area
- 2- Back side of door panel
- 3- Sound deadener

Figure 8

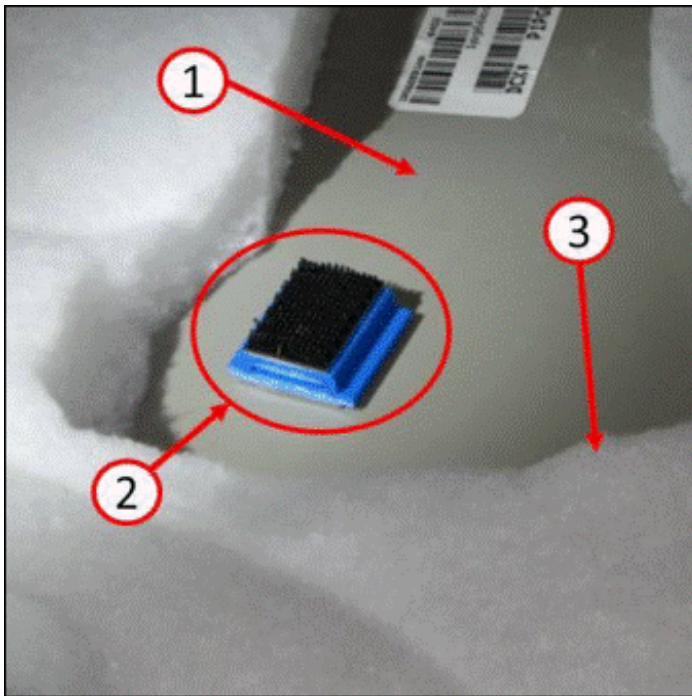


Figure 9

- Firmly pressurize the blue dual lock clip at scribed location for 5 seconds after removing the protective backing off the adhesive side of the clip.



**Note:**

Let the blue dual lock clip cure for 1 hour before reinstalling the door trim panels.

- 1- Back side of door panel
- 2- Dual lock clip
- 3- Sound deadener

- Reinstall both door trim panels.
- Seat door trim panel and press at new attachment location.



**Note:**

An audible “click” should be heard when pressing the door trim panel in place.

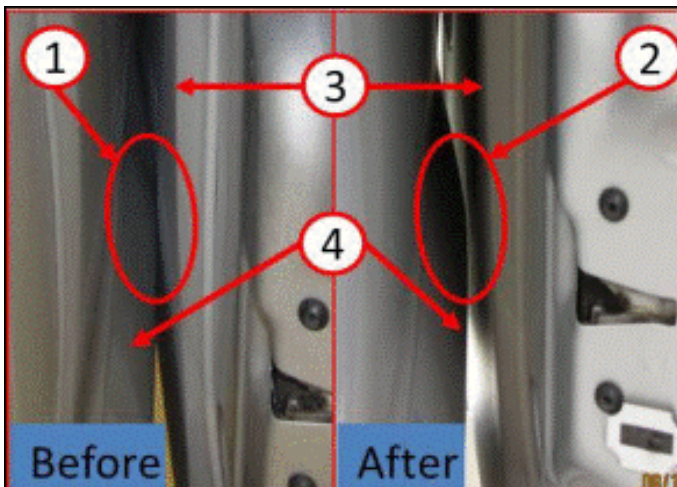


Figure 10

- Validate door trim panel clearance to rear quarter panel (Min Gap is 3/16” / 6mm).



**Note:**

Gap can be checked by applying modeling clay to the suspect area of the quarter panel.

- 1- Contact point
- 2- Panel clearance
- 3- Door trim panel
- 4- Quarter panel

# Technical Bulletin



## Warranty



**Note:**

Submit a separate Warranty claim if paint repairs are required.

All Routan pre and post road test and StarMOBILE time units are included in the labor operation. Therefore, no road test or StarMOBILE time units will appear in the designated area within the warranty table.

To determine if this procedure is covered under Warranty, always refer to the Warranty Policies and Procedures Manual <sup>1)</sup>					
Model(s)	Year(s)	Eng. Code(s)	Trans. Code(s)	VIN Range From	VIN Range To
Routan	2009-2012	All	All	All	All
<b>SAGA Coding</b>					
Claim Type:			Use applicable Claim Type <sup>1)</sup>		
Service Number:	Damage Code	HST		Damage Location (Depends on Service No.)	
7073	0032	CWM2029303		Use applicable when indicated in ElsaWeb (L/R)	
Parts Manufacturer	Routan		USM <sup>2)</sup>		
Labor Operation <sup>3)</sup> : Modify (left and right side) to improve panel clearance			70734099 = 90 TU		
Causal Part:			7B0 898 095		
<b>Diagnostic Time <sup>4)</sup></b>					
GFF Time expenditure	01500000 = 00 TU max.		NO		
Road Test	01210002 01210004		NO		
Technical Diagnosis	0132xxxx = 00 TU max.		NO		
Claim Comment: Input "As per Technical Bulletin 2029303" in comment section of Warranty Claim.					
<sup>1)</sup> Vehicle may be outside any Warranty in which case this Technical Bulletin is informational only <sup>2)</sup> Code per warranty vendor code policy. <sup>3)</sup> Labor Time Units (TUs) are subject to change with ELSA updates. <sup>4)</sup> Documentation required per Warranty Policy Procedures Manual.					

# Technical Bulletin



## Required Parts and Tools

Part Description	Part No:	Quantity
Sliding Door Repair Kit (One kit services one door)	7B0898095	2

Tool Description	Tool No:
Adhesion promoter or equivalent	3M 4298
Talc powder or equivalent	NPN
Isopropyl Alcohol	NPN

## Additional Information

All part and service references provided in this Technical Bulletin are subject to change and/or removal. Always check with your Parts Dept. and Repair Manuals for the latest information.