

Sliding door in partition wall cannot be locked in open position

Topic number	LI68.74-N-057463
Version	2
Design group	68.74 Partition wall
Date	06-09-2017
Validity	Model 906.6## with code (D64) Partition wall with sliding door
Reason for change	Remedy completely revised and method revised.
Reason for block	

Complaint:

Sliding door in partition wall cannot be locked in open position.

Cause:

The locking sleeves (1) of the two clips (2) of the door holder (3) can become deformed. This means that the locking pin (4) can no longer lock into place in the door holder (3) correctly (arrows) (see picture: 01.jpg).

Remedy:

Replacement of door holder with locking pin by door holder with magnet.

1. Create access to working area around partition wall at front left. If shelves are installed:
 - 1.1 Remove shelf/shelves on left.
 - 1.2 Remove vertical supports.
 - 1.3 Remove upper strut in area of roof paneling.
2. Close sliding door in partition wall.
3. Remove left partition wall and replace old door holder with door holder with magnet. Work procedure as described in AR68.74-D-0001H, but reinstall the partition wall at a later stage. The new door holder (see picture: 02.jpg) must be assembled prior to installation. (AR68. 74-D-0001-01H)
4. Mount Updated Bracket using only the lower mounting hole (see picture: 05.jpg) and center magnet with door plate. (See picture: 06.jpg).
5. Drill new hole for upper mounting hole (see picture: 07.jpg). Reuse old carriage bolt and tighten then reinstall partition wall.
6. Remove locking pin (4) of sliding door in partition wall (see picture: 01.jpg).
7. Attach steel plate (see picture: 04.jpg) to sliding door. Depending on the variant of the previously installed locking pin, either the steel plate is bolted on to the existing points (see picture: 02.jpg), or appropriate holes must be drilled for it (in the case of ball studs with central bolt). With the latter variant, the steel plate is then fastened to the sliding door with blind rivet nuts.

7.1 Only if there is a central hole: Drill holes (J and K) (see picture: 03.jpg). To do so, mark dimensions (H and I) measured from the center point of the hole (10) and mark the center of the new holes (J and K) with a punch. Finally, predrill holes with Ø2-2.5 mm drill bit. After this, the holes must be drilled out in stages to the diameter prescribed by the blind rivet nut manufacturer.

XENTRY TIPS

SAFETY NOTICE: Hearing protection, working gloves, safety glasses, safety shoes and protective clothing must be used.

8. Check the position and function of the steel plate and the door holder with magnet by opening the sliding door. (The fastening points of the new door holder match those of the old door holder).

9. Install upper strut, vertical supports and shelves on left. (If previously installed).

When installing the upper strut, the distances between the upper strut and all brackets must be measured and compensated for, if necessary, with shims. This ensures unstressed installation.

10. Clean vehicle interior in repair area.

Attachments	
File	Description
01.jpg	Defective door holder of sliding door
02.JPG	New door holder on partition wall (installed)
03.jpg	Dimensions for steel plate on sliding door
04.JPG	Steel plate on sliding door (bolted)
05.JPG	Mounting bracket alignment (1)
06.JPG	Mounting bracket alignment (2)
07.JPG	Mounting bracket hole

Symptoms
Body / Door/Flap / Door / Door / Door holder faulty

Parts						
Part number	ES1	ES2	Designation	Quantity	Note	EPC
A 639 740 02 16			Door holder	1	Door holder/door catch	X
A 906 713 00 00			Bracket	1	Bracket on partition wall	X
A 906 715 00 00			Reinforcement	1	Steel plate for sliding door	X
N 000000 001145			Bolt	1	Bolt, door holder to bracket	X
N 000000 001552			Bolt	2	Bolt, bracket to bracket	X
N 000000 002209			Bolt	2	Bolt, steel plate to sliding door (if necessary)	X
N 000000 006148			Nut	2	Nut, bracket to bracket	X
			Blind rivet nut M5	2	Attachment of steel plate to sliding door (if necessary)	
A 639 743 01 14			Bracket	1	Mounting rail between door holder and bracket on partition wall	X

Operation numbers/damage codes				
Op. no.	Operation text	Time	Damage code	Note

XENTRY TIPS

68-7370	REPLACE DOOR HOLDER FOR SLIDING DOOR IN PARTITION WALL ON VEH. WITH CODE D64		71131 06	Partition wall door holder - Broken
68-7386	RETROFIT STEEL PLATE FOR DOOR HOLDER OF SLIDING DOOR (PARTITION WALL REMOVED)		71131 06	Partition wall door holder - Broken

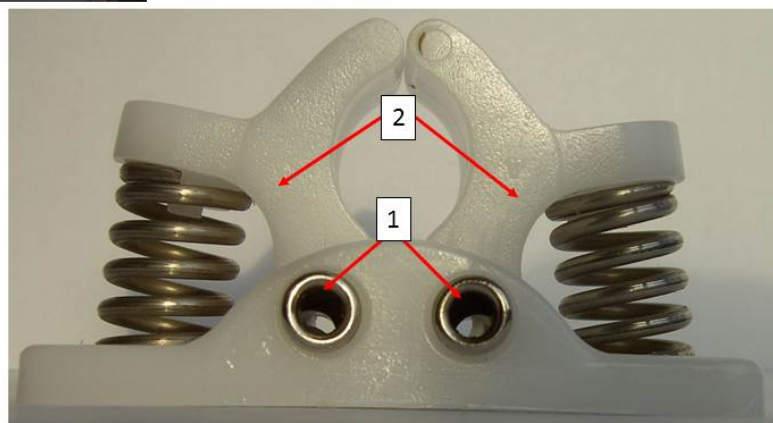
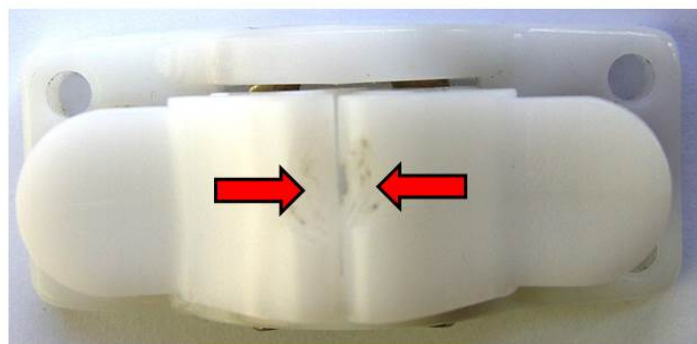
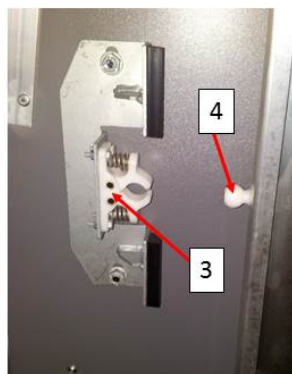
WIS-References			
Document number	Title	Note	Allocation
AR68.74-D-0001H	Remove/install door holder for sliding door in partition wall		Remedy
AR68.74-D-0001-01H	Prepare door holder for sliding door in partition wall for installation		Remedy

Validity		
Vehicle	Engine	Transmission
Sprinter III - 906.611	*	*
Sprinter III - 906.613	*	*
Sprinter III - 906.631	*	*
Sprinter III - 906.633	*	*
Sprinter III - 906.635	*	*
Sprinter III - 906.637	*	*
Sprinter III - 906.653	*	*
Sprinter III - 906.655	*	*
Sprinter III - 906.657	*	*

Attachments

XENTRY TIPS

01.jpg:

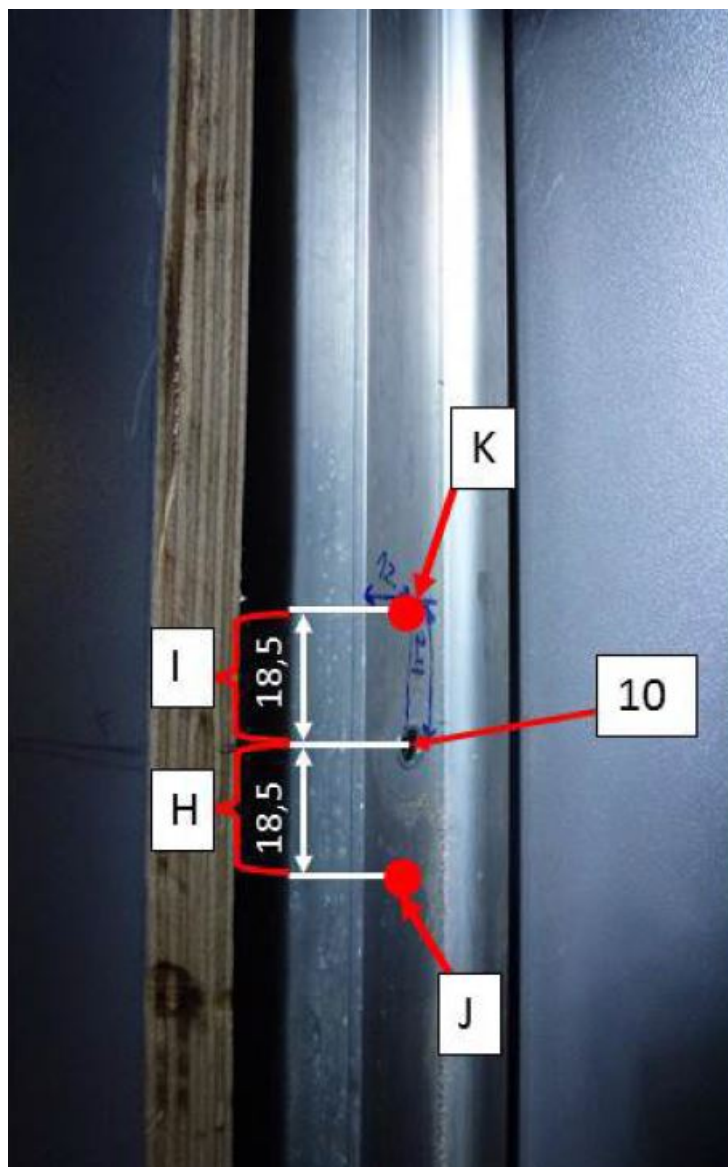


02.JPG:



XENTRY TIPS

03.jpg:



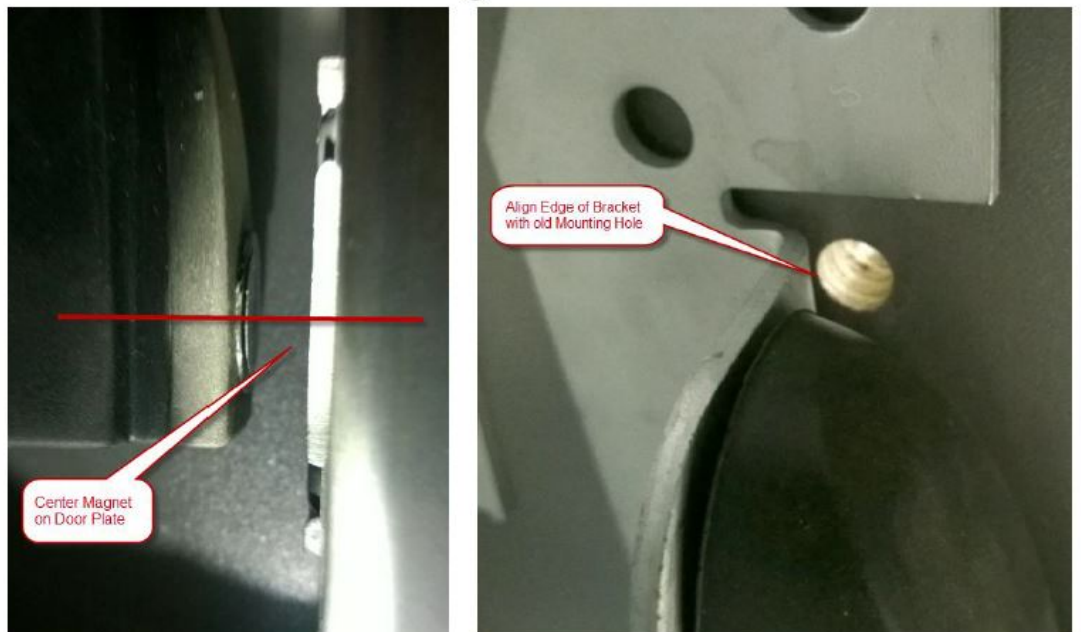
XENTRY TIPS

04.JPG:



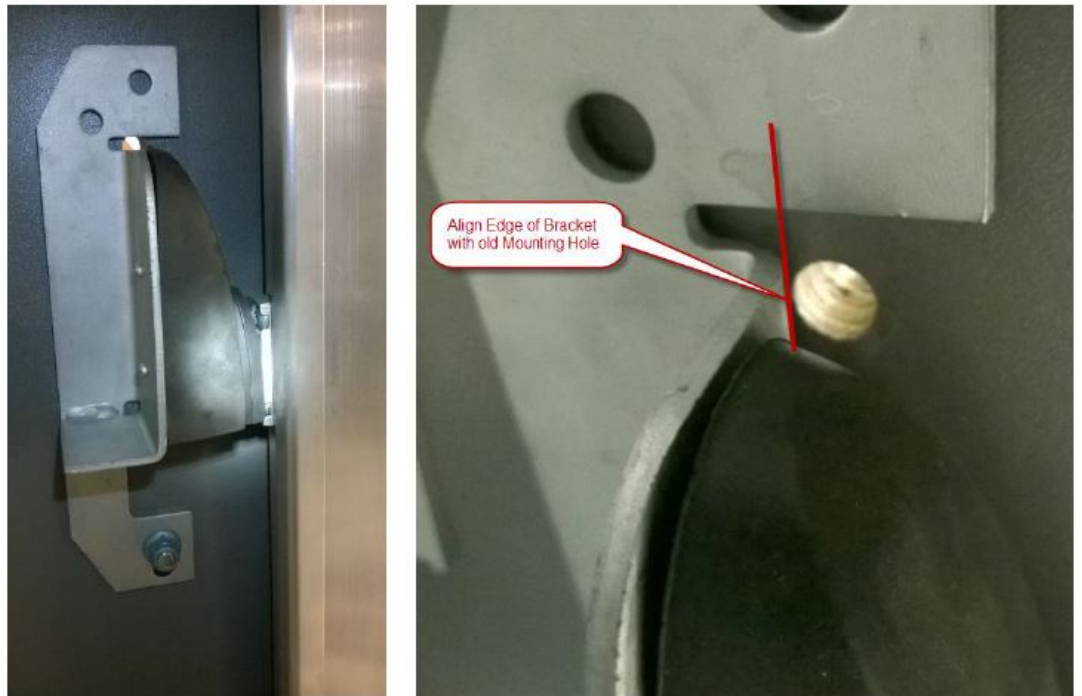
05.JPG:

Mount New Bracket using only the lower mounting hole and Center Magnet with door Plate



06.JPG:

Bracket Installed and Bottom Bolt tightened



07.JPG:

Drill new hole for Upper mounting hole Reuse old Carriage Bolt and tighten and Reinstall Partition Wall

