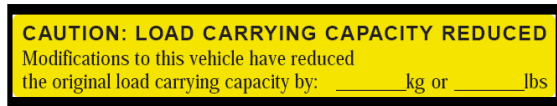
 HYUNDAI Technical Service Bulletin	GROUP GENERAL INFORMATION	NUMBER 19-GI-002H
	DATE MARCH, 2019	MODEL(S) ALL
SUBJECT: LABEL REQUIREMENTS FOR VEHICLE LOADING TO COMPLY WITH FMVSS 110		

Description: This TSB supersedes TSB 13-GI-001 and has been updated to describe the new website available on HMAService.com designed to assist dealers with proper application of the “Load Carrying Capacity Reduced” label.

Effective June 2, 2008, Federal Motor Vehicle Safety Standard 110 (FMVSS 110) set a threshold for correcting load capacity information indicated on tire placards when the vehicle weight has been increased before retail sale. This limit is the lesser of 1.5% of the Gross Vehicle Weight Rating or 45.4kg (100 pounds). If the total added weight exceeds the lesser of the limit, a label (See Figure 1) must be added to the driver-side B-pillar within 25mm (1 inch) of the original tire placard.



Applicable Vehicles: All vehicles retailed beginning on June 2, 2008 that meet the additional weight criteria above.

Parts Information:

Part Name	Label Part Number	Qty.
Load Carrying Capacity Reduced Label	NP070-09003	1

Service Procedure:

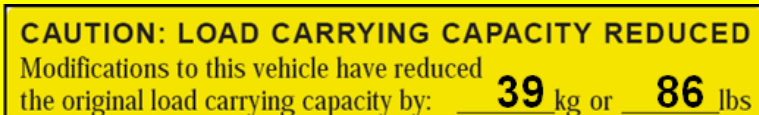
All Dealers must determine if the weight they have added in the form of a single or multiple option(s) or accessory(s), when added to the weight of any Port installed option(s) or accessory(s), exceeds the lesser of 1.5% of GVWR or 45.4kg (100 lbs). All Port installed or Dealer installed options must be included in the weight analysis. If the additional weight does exceed the lesser of the indicated thresholds, a 'Load Carrying Capacity Reduced' Label must be installed. A black, fine point, indelible marker must be used to write by hand onto the label the reduced carrying capacity in kilograms and pounds, which is the total weight of all the added option(s) or accessory(s).



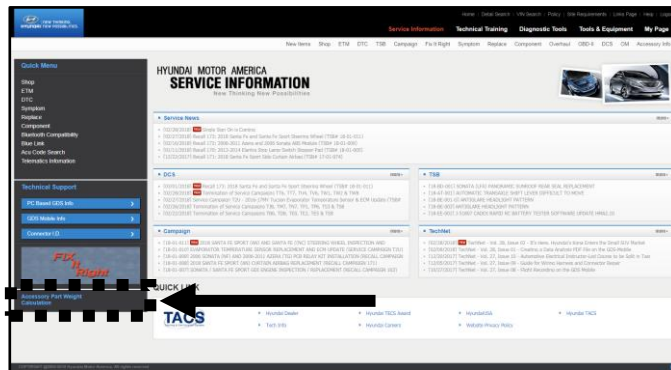
Example:

Vehicle	GVWR	Port Installed Accessory Weight	Dealer Installed Accessory Weight	Total Accessory Weight	1.5% of GVWR
Year: 2018 Model: Santa Fe Trim: Limited Option: FWD	5,512 lbs	24 kg (53 lbs)	15 kg (33 lbs)	39 kg (86 lbs)	38 kg (84 lbs)

The added accessories weigh 39kg (86 lbs) and exceed the listed 1.5% (GVWR) threshold of 38kg (84 lbs). Therefore, a "Load Carrying Capacity Reduced" Label must be added with a value of 39kg (86 lbs) written with a black, fine point indelible marker. The label must be applied within 25mm (1 inch) of the existing tire placard.



- To determine if a “Load Carrying Capacity Reduced” label is required go to the following website: HyundaiTechInfo.com.



On the left side of the screen you will find a link to the “Accessory Part Weight Calculation” worksheet.

Selecting this link will initiate a download of the “Part Accessory Weight Calculation” Excel worksheet.

- The downloaded sheet has an automated calculation that will determine if the vehicle requires the “Load Carrying Capacity Reduced” Label. It will also indicate the weight to be recorded on the label.

Example: Label Required (write both 115lbs and 52.2kg on the label)

Step 1		Step 2		Findings
Select your Model and record In the GVWR box BELOW. (lbs.)	+	Enter Port Installed Accessory Weight from the Monroney Label (lbs.)	=	Applicable Dealer Installed Accessories (lbs.)
5000		15		100
				Exceeds FMVSS110 limits, Load Carrying Capacity Reduced Label REQUIRED (52.2kg and 115lbs)

Example: Label NOT Required

Step 1		Step 2		Findings
Select your Model and record In the GVWR box BELOW. (lbs.)	+	Enter Port Installed Accessory Weight from the Monroney Label (lbs.)	=	Applicable Dealer Installed Accessories (lbs.)
5000		15		10
				Load Carrying Capacity Reduced Label NOT required

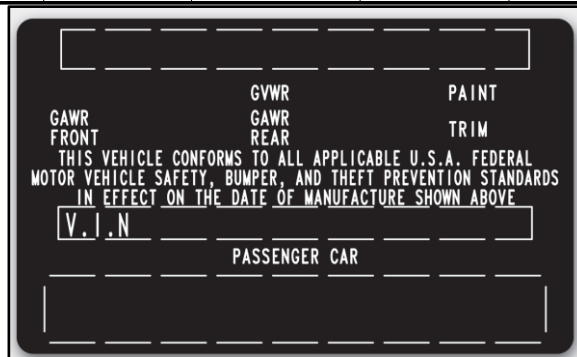
- Step 1: Enter GVWR

From the provided table select subject vehicle (Model, Year, Trim). Enter the weight below the cell labeled “Select your Model and record in the GVWR box BELOW (lbs.)”.

Year	Model	Accessory	Part #	Weight (lbs.)
2018	Santa Fe	Auto-Dimming Mirror w/ BlueLi	B8062ADU00	1,400
2018	Santa Fe	Cargo Net	B8017ADU00	0,476
2018	Santa Fe	Cargo Net w/Pouch	B8017ADU10	1,150
2018	Santa Fe	Cargo Screen	B8H15AP000RYN	7,500
2018	Santa Fe	Cargo Tray	B8012ADU00	2,110
2018	Santa Fe	Carpeted Cargo Tray-Black	B8012ADU10RYN	4,400
2018	Santa Fe	Carpeted Cargo Tray-Brown	B8012ADU10NBC	4,400
2018	Santa Fe	Carpeted Floor mats-Black	B8F14AC000RYN	10,360
2018	Santa Fe	Carpeted Floor mats-Chocolate	B8F14AC000NBC	10,360
2018	Santa Fe	Crossbars-For non-panoramic r	42021ADU01	5,000
2018	Santa Fe	Crossbars-For panoramic roof d	42021ADU50	6,900

*** NOTE**

If the subject vehicle is not listed refer to the VIN placard on the vehicle B-Pillar. Record the GVWR weight rating.



HYUNDAI 2018 SANTA FE SE ULT AWD

SOLD TO: NH555 HMA NATL CO CAR 10550 TALBERT AVENUE FOUNTAIN VALLEY CA 92708		SHIPPED TO: NH555		GOVERNMENT 5-STAR SAFETY RATINGS Overall Vehicle Score ★★★★★ Based on the combined rating of frontal, side and rollover. Should ONLY be compared to other vehicles of similar size and weight.	
VIN: KMSRDHFJKU282113 MODEL: J0422A65 ENGINE: G6DHA841281 PORT OF ENTRY: HU EXTERIOR COLOR: BECKETTS BLACK INTERIOR/SEAT COLOR: GRAY/GRAY TRANSPORT: TRUCK ACCESSORY WEIGHT: 76 lbs / 35 kgs EMISSIONS: This vehicle is certified to meet emission requirements in all 50 states		Frontal Driver ★★★★★ Crash Passenger ★★★★★ Side Front seat ★★★★★ Crash Rear seat ★★★★★ Rollover ★★★★★ Based on the risk of rollover in a single-vehicle crash.		Star ratings range from 1 to 5 stars (★★★★★) with 5 being the highest. Source: National Highway Traffic Safety Administration (NHTSA). www.safercar.gov or 1-888-327-4236	

- Step 2: Entering Accessory Weights
 - Enter Port Installed Accessory Weight from the Monroney Label
 - From the table provided add all applicable Dealer Installed Accessories. The Accessory weight is also indicated in the installation instructions.
 - Enter the weight below the cell labeled “Applicable Dealer Installed Accessories (lbs.).”

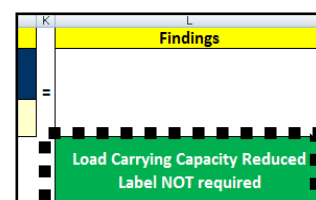
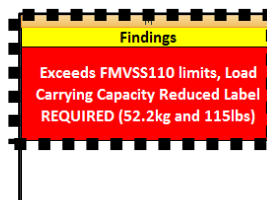
TRANSPORT: TRUCK
ACCESSORY WEIGHT: 76 lbs / 35 kgs.
EMISSIONS: This vehicle is certified to meet emis

Year	Model	Accessory	Part #	Weight (lbs.)
2018	Santa Fe	Auto-Dimming Mirror w/ BlueL	B8062ADU00	1.400
2018	Santa Fe	Cargo Net	B8017ADU00	0.476
2018	Santa Fe	Cargo Net w/Pouch	B8017ADU10	1.150
2018	Santa Fe	Cargo Screen	B8H15AP000RYN	7.500
2018	Santa Fe	Cargo Tray	B8012ADU00	2.110
2018	Santa Fe	Carpeted Cargo Tray-Black	B8012ADU10RYN	4.400
2018	Santa Fe	Carpeted Cargo Tray-Brown	B8012ADU10NBC	4.400
2018	Santa Fe	Carpeted Floor mats-Black	B8F14AC000RYN	10.360
2018	Santa Fe	Carpeted Floor mats-Chocolate	B8F14AC000NBC	10.360
2018	Santa Fe	Crossbars-For non-panoramic r	4Z021ADU01	5.000
2018	Santa Fe	Crossbars-For panoramic roof c	4Z021ADU50	5.900

*** NOTE**

When Dealers add accessory(s) or option(s) before retail sale, Dealers are required to add the weights of Port installed accessory(s) listed on the Monroney Label to the weights of accessories added at the Dealer. The total weight of port installed accessories will be printed in the box containing the VIN and Engine # in the lower portion of the Monroney Label. Dealers must add the listed accessory weight to the weights of any Dealer installed accessory(s) or option(s) to determine the total accessory weight. If a label was already applied at the Ports containing a reduced load carrying capacity, the Dealer may need to apply a new label to take into account additional option(s) or accessory(s) added by the Dealer.

- The worksheet will indicate if a “Load Carrying Capacity Reduced” label is required. If the label is required the worksheet will indicate the weight that must be written on the label.



- Label must be added with the indicated weight in lbs. written with a black, fine point indelible marker. The label must be applied within 25mm (1 inch) of the existing tire placard.

Example:

CAUTION: LOAD CARRYING CAPACITY REDUCED
 Modifications to this vehicle have reduced the original load carrying capacity by: **39** kg or **86** lbs

