

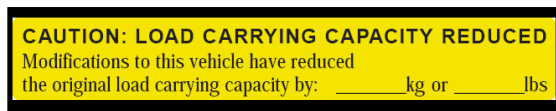


GROUP GENERAL INFORMATION	NUMBER 19-GI-002G
	DATE MARCH, 2019
MODEL(S) ALL	

Technical Service Bulletin

SUBJECT: LABEL REQUIREMENTS FOR VEHICLE LOADING TO COMPLY WITH FMVSS 110

Description: Effective June 2, 2008, Federal Motor Vehicle Safety Standard 110 (FMVSS 110) sets a threshold for correcting load capacity information indicated on tire placards when the vehicle weight has been increased before retail sale. This limit is the lesser of 1.5% of the Gross Vehicle Weight Rating or 100 pounds. If the total added weight exceeds the lesser of the limit, a label (See Figure 1) must be added to the driver-side B-pillar within 25mm (1 inch) of the original tire placard.



Applicable Vehicles: All Genesis brand vehicles that meet the additional weight criteria above.

Parts Information:

Parts Name	Label Part Number	Qty.
Load Carrying Capacity Reduced Label	NP070-09003	1

Service Procedure:

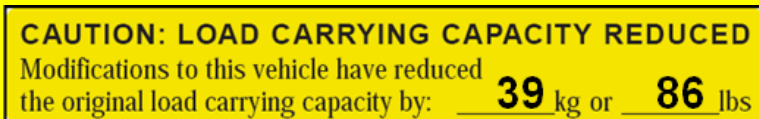
All Dealers must determine if the weight they have added in the form of a single or multiple option(s) or accessory(s), when added to the weight of any Port installed option(s) or accessory(s), exceeds the lesser of 1.5% of GVWR or 45.4kg (100 lbs). All Port installed or Dealer installed options must be included in the weight analysis. If the additional weight does exceed the lesser of the indicated thresholds, a 'Load Carrying Capacity Reduced' Label must be installed. A black, fine point, indelible marker must be used to write by hand onto the label the reduced carrying capacity in kilograms and pounds, which is the total weight of all the added option(s) or accessory(s).



Example:

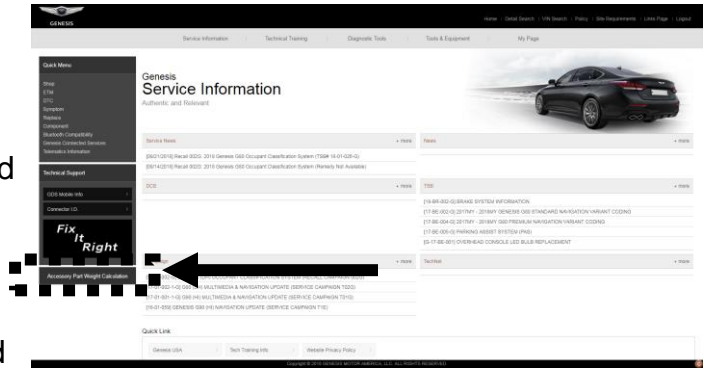
Vehicle	GVWR	Port Installed Accessory Weight	Dealer Installed Accessory Weight	Total Accessory Weight	1.5% of GVWR
Year: 2018 Model: G80 Trim: Sport Option: RWD	5,512 lbs	24 kg (53 lbs)	15 kg (33 lbs)	39 kg (86 lbs)	38 kg (84 lbs)

The added accessories weigh 39kg (86 lbs) and exceed the listed 1.5% (GVWR) threshold of 38kg (84 lbs). Therefore, a "Load Carrying Capacity Reduced" Label must be added with a value of 39kg (86 lbs) written with a black, fine point indelible marker. The label must be applied within 25mm (1 inch) of the existing tire placard.



- To determine if a “Load Carrying Capacity Reduced” label is required go to the following website:
GenesisTechInfo.com.

On the left side of the screen you will find a link to the “Accessory Part Weight Calculation” worksheet.



Selecting this link will initiate a download of the “Part Accessory Weight Calculation” Excel worksheet.

- The downloaded sheet has an automated calculation that will determine if the vehicle requires the “Load Carrying Capacity Reduced” Label. It will also indicate the weight to be recorded on the label.

Example: Label Required (write both 115lbs and 52.2kg on the label)

Step 1			Step 2		Findings	
Select your Model and record In the GVWR box BELOW. (lbs.)			+	Enter Port Installed Accessory Weight from the Monroney Label (lbs.)	=	Exceeds FMVSS110 limits, Load Carrying Capacity Reduced Label REQUIRED (52.2kg and 115lbs)
5000				15		
				Applicable Dealer Installed Accessories (lbs.)		
				100		

Example: Label NOT Required

Step 1			Step 2		Findings	
Select your Model and record In the GVWR box BELOW. (lbs.)			+	Enter Port Installed Accessory Weight from the Monroney Label (lbs.)	=	Load Carrying Capacity Reduced Label NOT required
5000				15		
				Applicable Dealer Installed Accessories (lbs.)		
				10		

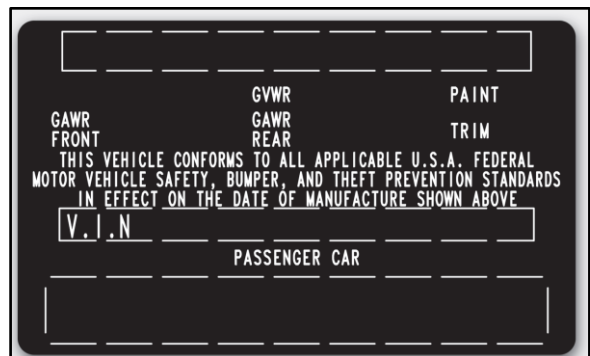
- Step 1: Enter GVWR

From the provided table select subject vehicle (Model, Year, Trim). Enter the weight below the cell labeled “Select your Model and record in the GVWR box BELOW (lbs.)”.

Model	Model Code	Engine	Transmission	GVWR (lbs.)
G80 RWD	B2402R65	3.8 L	AUTO	5269
G80 AWD	B2402A65	3.8 L	AUTO	5423
G80 SPORT RWD	B2432R65	3.3T	AUTO	5512
G80 SPORT AWD	B2432A65	3.3T	AUTO	5666
G80 ULTIMATE RWD	B2452R85	5.0 L	AUTO	5490
G80 ULTIMATE AWD	B2452A85	5.0 L	AUTO	5644
G90 RWD	D254I5G1J	3.3T	AUTO	5578
G90 AWD	D254I5G1K	3.3T	AUTO	5732
G90 RWD	D254T3A1J	5.0 L	AUTO	5710
G90 AWD	D254T3A1K	5.0 L	AUTO	5864

*** NOTE**

If the subject vehicle is not listed refer to the VIN placard on the vehicle B-Pillar. Record the GVWR weight rating.



4. Step 2: Entering Accessory Weights

- Enter Port Installed Accessory Weight from the Monroney Label
- From the table provided add all applicable Dealer Installed Accessories. The weights are also indicated on the accessory installation instructions.
- Enter the weight below the cell labeled “Applicable Dealer Installed Accessories (lbs.).”

SOLD TO: CA321 PUENTE HILLS HYUNDAI 17621 GALE AVENUE CITY OF INDUSTRY CA 91748		SHIPPED TO: CA321	
VIN: KMHG54JH7JU038908	ENGINE: G8BEHU096713	EXTERIOR COLOR: CASABLANCA WHITE	INTERIOR/SEAT COLOR: BLACK/BLACK
MODEL: E1452R85	PORT OF ENTRY: HU	TRANSPORT: TRUCK	ACCESSORY WEIGHT: 26 lbs./ 12 kgs.
EMISSIONS: This vehicle is certified to meet emission requirements in all 50 states			

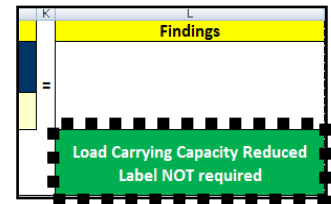
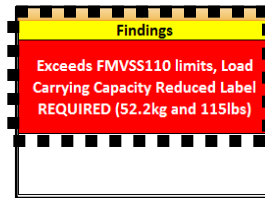


Model	Accessory	Part #	Weight (lbs.)
G80	All Weather Mats-AWD	B1113ADU00	9.300
G80	All Weather Mats-RWD	B1013ADU00	9.300
G80	Card Key	B1064ADU01	0.070
G80	Carpeted Floor Mats-AWD Black	B1F14AU100RRY	6.300
G80	Carpeted Floor Mats-AWD Brown	B1F14AU100RNB	6.300
G80	Carpeted Floor Mats-RWD Black	B1F14AU000RRY	6.300
G80	Carpeted Floor Mats-RWD Brown	B1F14AU000RNB	6.300
G80	Charging Cable-8-pin to USB	B1F66AU100	0.063

*** NOTE**

When Dealers add accessory(s) or option(s) before retail sale, Dealers are required to add the weights of Port installed accessory(s) listed on the Monroney Label to the weights of accessories added at the Dealer. The total weight of port installed accessories will be printed in the box containing the VIN and Engine # in the lower portion of the Monroney Label. Dealers must add the listed accessory weight to the weights of any Dealer installed accessory(s) or option(s) to determine the total accessory weight. If a label was already applied at the Ports containing a reduced load carrying capacity, the Dealer may need to apply a new label to take into account additional option(s) or accessory(s) added by the Dealer.

- 5.** The worksheet will indicate if a “Load Carrying Capacity Reduced” label is required. If the label is required the worksheet will indicate the weight that must be written on the label.



- 6.** Label must be added with the indicated weight in lbs. written with a black, fine point indelible marker. The label must be applied within 25mm (1 inch) of the existing tire placard.

Example:

