



Service Bulletin

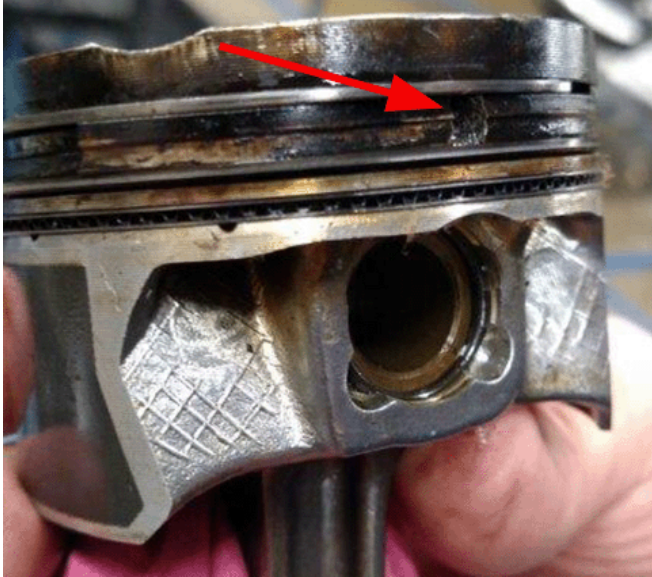
Bulletin No.: 19-NA-090

Date: May, 2019

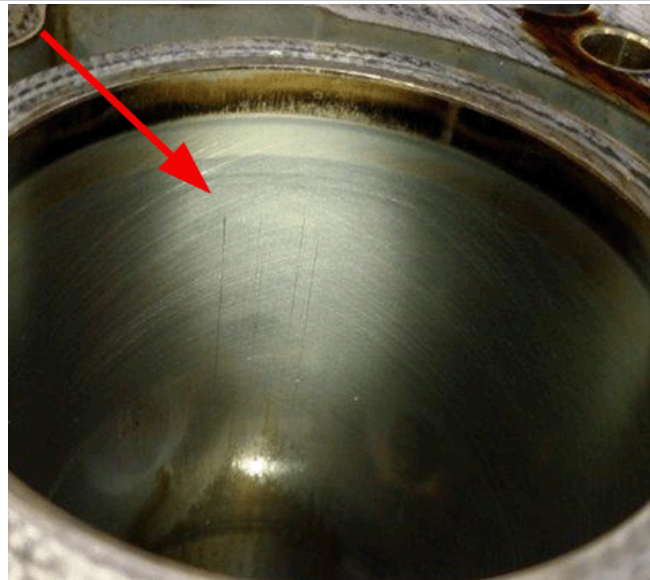
INFORMATION

Subject: Information on Possible Oil Consumption and/or Leaks, Malfunction Indicator Lamp (MIL) Illuminated - DTC P0300 Set

Brand:	Model:	Model Year:		VIN:		Engine:	Transmission:
		from	to	from	to		
Buick	Encore	2013	2019			1.4L (LUJ, LUV)	
Chevrolet	Cruze	2011	2016				
	Sonic	2012	2019				
	Trax	2013	2019				

Involved Region or Country	North America, Israel
Condition	<p>Some customers may comment on one or more of the following conditions:</p> <ul style="list-style-type: none"> • Oil consumption • Oil leak • MIL illuminated <p>Some technicians may find DTC P0300 (Engine Misfire Detected) set in the Engine Control Module along with a misfire and low compression in one or more cylinders.</p>
Cause	 <p style="text-align: right;">4576900</p> <p>This condition may be caused by a broken piston ring land.</p>

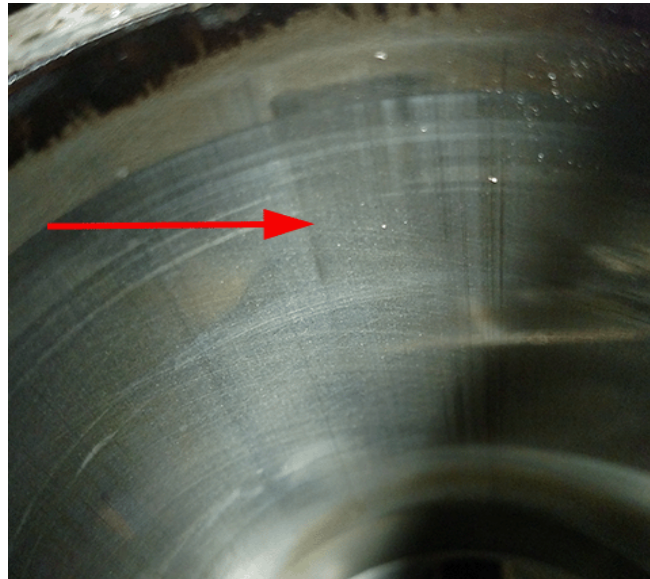
Information



4576902

Note: If the cylinder wall surface has not been compromised, Do Not replace the engine. Only replace all four pistons and rings.

Perform an Engine Compression Test to aid in diagnosing a possible concern of oil consumption/leak from a piston/cylinder. It is recommended that a Cylinder Leakage Test be performed and record the test results to isolate the concern. If excessive leakage to the crankcase has been isolated, the pistons and cylinder walls must be inspected for compromise. Do not replace the engine if marks have been found on the cylinder walls. Only replace the pistons and rings.



4576914

Shown above is an example of a damaged cylinder wall. Scuffing is wide and has removed the crosshatch from the cylinder wall. If marks in the cylinder walls could be felt with the finger nail, engine replacement is recommended.

Version	1
Modified	Released April 30, 2019

GM bulletins are intended for use by professional technicians, NOT a "do-it-yourselfer". They are written to inform these technicians of conditions that may occur on some vehicles, or to provide information that could assist in the proper service of a vehicle. Properly trained technicians have the equipment, tools, safety instructions, and know-how to do a job properly and safely. If a condition is described, DO NOT assume that the bulletin applies to your vehicle, or that your vehicle will have that condition. See your GM dealer for information on whether your vehicle may benefit from the information.



WE SUPPORT VOLUNTARY
TECHNICIAN
CERTIFICATION