

## Field campaign

<b>Topic</b>	Front camera parameters (SC19/04)
<b>Market area</b>	Bentley: worldwide (2WBE),Hongkong-Macau (5HK)
<b>Brand</b>	Bentley
<b>Transaction No.</b>	2053347/2
<b>Campaign number</b>	EB18
<b>Note</b>	
<b>Type</b>	
<b>US code</b>	

## Vehicle data

### Bentayga

#### Sales types

Type	MY	Brand	Designation	Engine code	Gearbox code	Final drive code
4V1*	2017	E		*	*	*
4V1*	2018	E		*	*	*

#### Chassis numbers

Manufacturer	Filler	Type	Filler	MY	Factory	From	To	Prod from	Prod to
SJA	*	*	*	*	*	011118	019500		

## Documents

Document name
<a href="#">master.xml</a>

-

## Notes

▫ [Repair instructions](#)

### Technical background

On a limited number of Bentayga vehicles, the heating parameters for the front camera may have been set incorrectly.

### Remedy

On all affected vehicles the front camera control unit must have new heating parameters set.

### Customer notification

Customers do not need to be informed directly of this campaign. Please ensure that all affected vehicles are checked and repaired during a service visit. You should also inform your new and used car sales departments so that the vehicles affected can be checked, and if necessary repaired immediately and not just prior to sale.

### Warranty

Warranty type	710 or 790
Labour operation code	01 29 00 04
Damage Service Number	EB18
Damage code	00 66
Time	40 TU
Criteria ID	01

### Parts

Not applicable.

### Parts supply

Not applicable.

### Parts despatch control

Not applicable.

---

## Repair instructions

▫ [Notes](#)

### Technical background

On a limited number of Bentayga vehicles, the heating parameters for the front camera may have been set incorrectly.

### Check

If the vehicle is not already listed as repaired in the 'Repair history' section of ElsaPro, check for the presence of the campaign identification mark as shown in the '**Identification**' section of this document. In the event that the campaign has not been applied, please carry out the required work in accordance with these instructions.

### Parts

Not applicable.

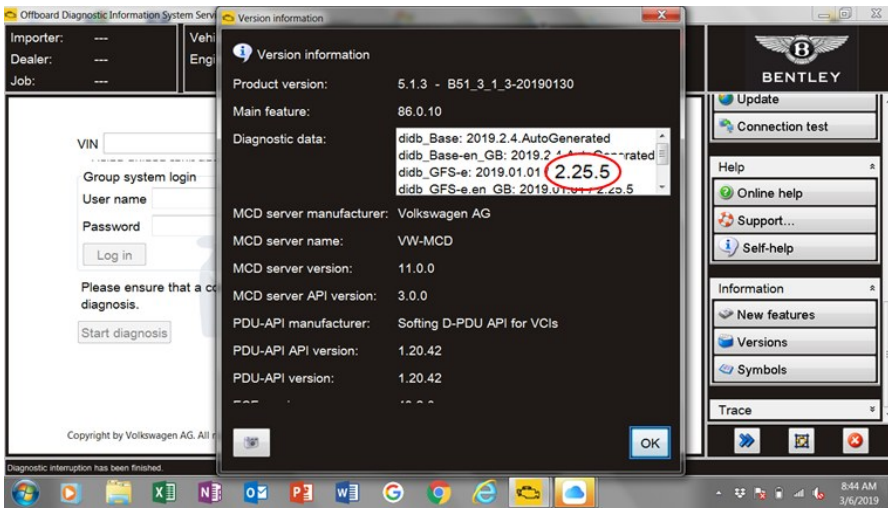
### Work

**The ODIS Brand version must be running at a minimum of 2.25.5, if not then update your ODIS program to the latest available version.**

IMPORTANT: Check the current version of ODIS on your VAS tester. Select the **Information** menu on the ODIS home screen and check the **Brand version** (highlighted below).

If the **Brand version** is [2.25.5](#) a Hotfix is required to be installed on the tester before carrying out the repair, follow the [Installing Hotfix](#) section of this document.

If the **Brand version** is [2.25.6](#) or higher a Hotfix is not required, proceed straight to the [Parameter settings](#) section of this document.



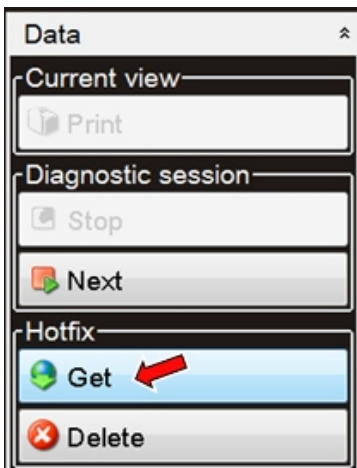
## Installing Hotfix

The Following Hotfix is available for Brand version **2.25.5** only.

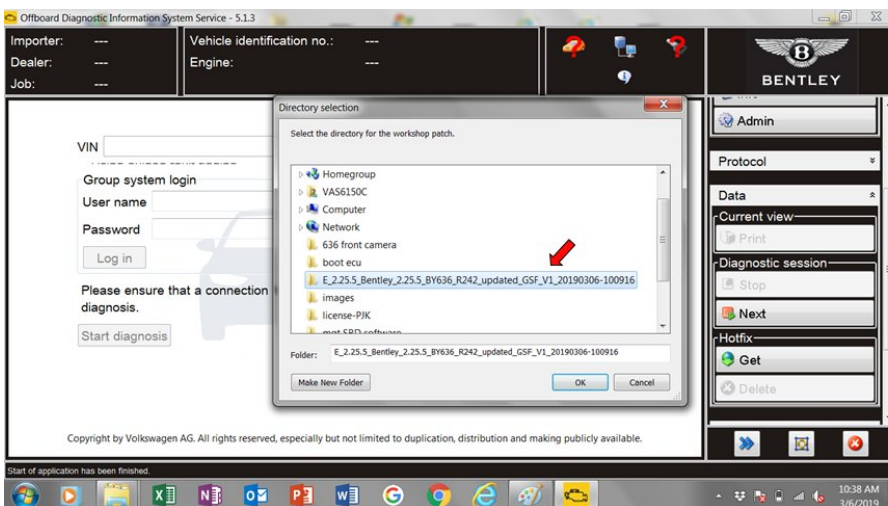
Download the hotfix 'E\_2.25.5\_Bentley\_2.25.5\_BY636\_R242\_updated\_GSF\_V1\_20190306-100916.zip' from Bentley Hub onto a USB memory stick and then copy it onto the Desktop of the VAS tester. Make sure ODIS is not running, if it is close it down.

Extract the zip file onto the desktop of your VAS tester – it will create a folder containing multiple files.

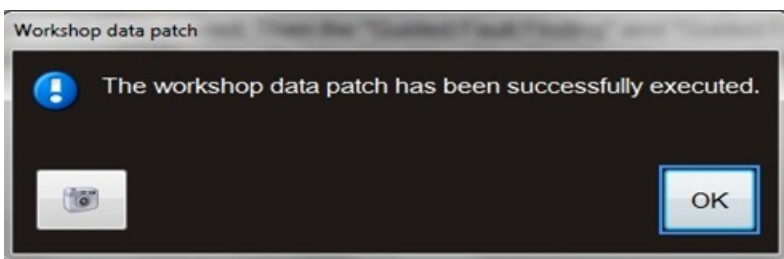
Start ODIS as normal. From the ODIS homepage click the 'Data' menu option then scroll down to 'Hotfix' and select 'Get'.



Navigate to the following folder that was created on your desktop and select the file.



The following message should appear:



Now continue with the [Parameter settings](#) section of this document.

## Parameter settings

- **The closed-circuit voltage of the vehicle must be at least 12.5 V during the update. Connect the battery of the vehicle to an external power supply. For further information see the maintenance manual or the repair manual.**
- **Because of the highest transmission stability we recommend the use of the diagnosis interface VAS 6154 (WiFi diagnostic tool) only in the USB operation or the cable-connected VAS 5055 for the reprogramming (updating) of control units. If these units are not available, the diagnosis interface VAS 5054 (A) can also be used in USB mode.**

1. Select and run Guided fault finding. Within the Special functions tab select SVM – Problem related Hardware/Software update, then select Perform test (Figure 1).

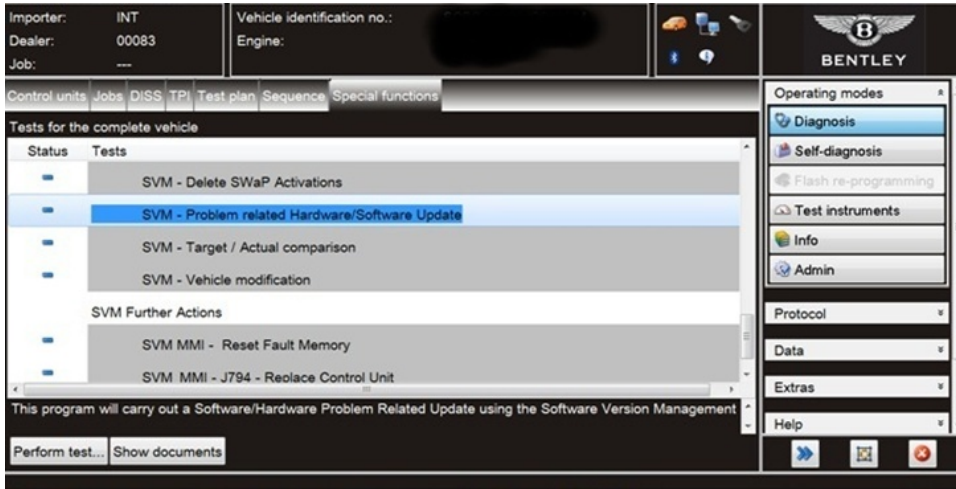


Figure 1

2. On the next screen enter the SVM code **4V0A5ZDC01** and select Adopt (Figure 2). On the following screen confirm code is correct.

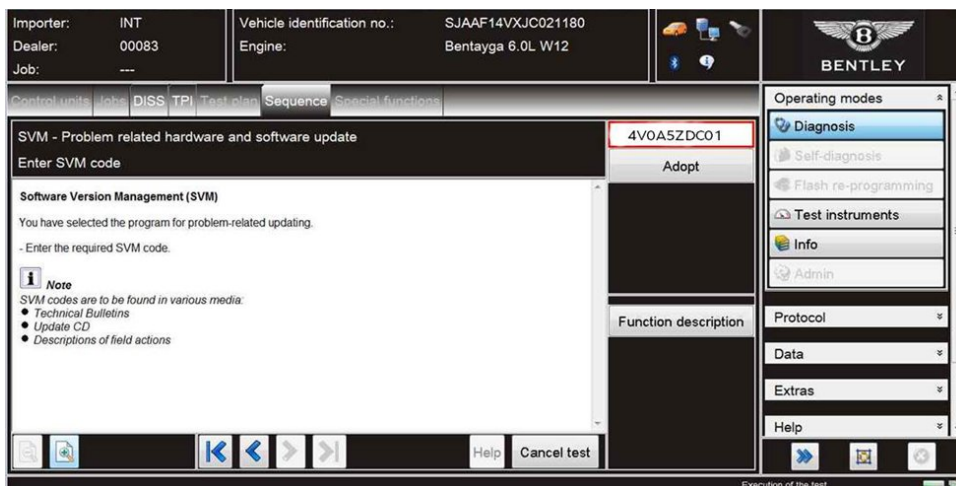


Figure 2

3. Follow on screen prompts until the screen below is displayed (Figure 3), select Done/Continue, the parameters of the front camera will now be set.

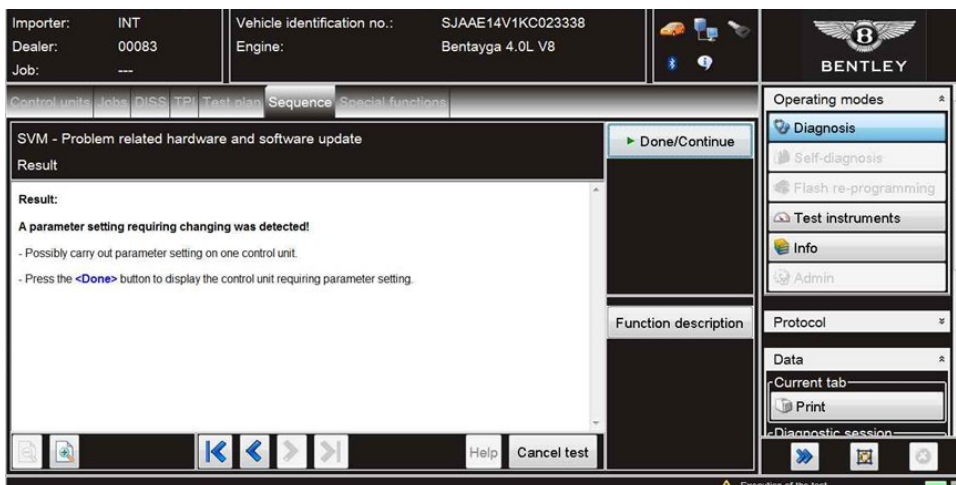


Figure 3

4. Continue to follow all on screen prompts until the message 'Vehicle conversion/update successfully completed' appears (Figure 4). Select Done/Continue, the test will then be ended.

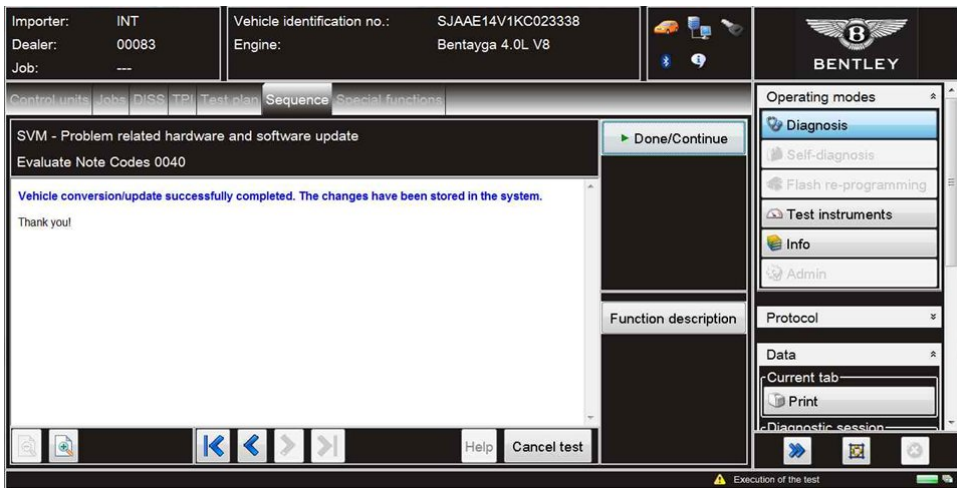


Figure 4

IMPORTANT: The following action must be completed.

Click the *Select own test* option then navigate to;

**A5 – Front camera for driver assist systems – R242 → A5 - Subsystems, marginal conditions → R242 – Front camera heater parameter adaption**

Select and attach to test plan (Figure 5).

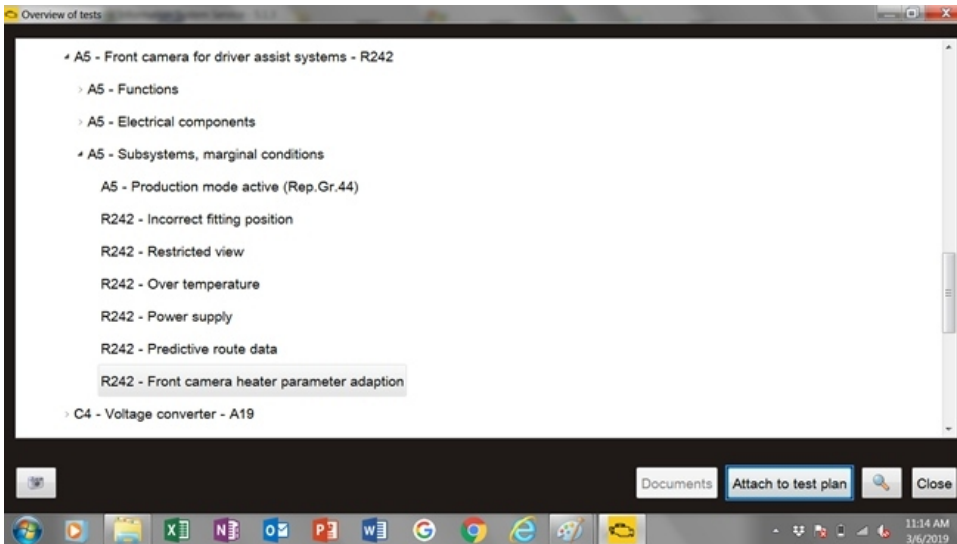


Figure 5

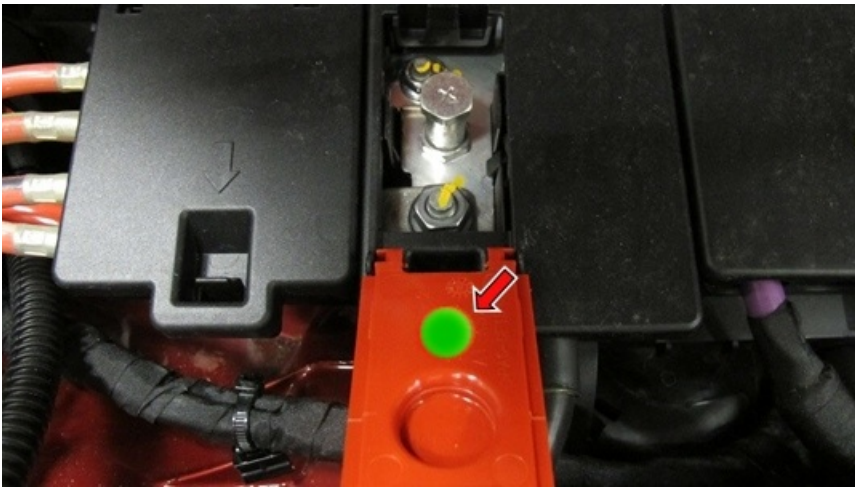
Now select and run the test, the heating parameters for the front camera will be adjusted. Ensure the new values in the 'Actual value after adaption' column are stored exactly as below (Figure 6).



Figure 6

## Identification

On completion apply a GREEN paint campaign completion mark to the inside of the battery positive post cover. The presence of the GREEN dot confirms campaign completion.



---

▫ [Repair instructions](#) ▫ [Notes](#)