	GROUP TRA	MODEL 2017-2018MY Soul (PS) 1.6T Forte (YDm) 1.6T 2016-2018MY Optima (JFa) 1.6T
	NUMBER 078	DATE June 2019

## TECHNICAL SERVICE BULLETIN

**SUBJECT: TRANSMISSION LOGIC IMPROVEMENT**

This bulletin provides the procedure to optimize the logic of the Transmission Control Unit (TCU) on 2017-2018MY Soul (PS) and Forte (YDm) and 2016-2018MY Optima (JFa) vehicles equipped with 1.6T GDI that have one of the following three components replaced:

- Dual Clutch Transmission (DCT) assembly
- Transmission Control Unit (TCU)
- Double Clutch Set

The friction material of the double clutch set has been changed and a TCU logic optimization must be performed in order to prevent initial shift shock. To prevent this concern, apply the optimized logic to the TCU using the KDS ECU Upgrade function as described in this bulletin. For confirmation that the latest reflash has been applied to a vehicle you are working on, verify the ROM ID using the table on page 3 of this bulletin.



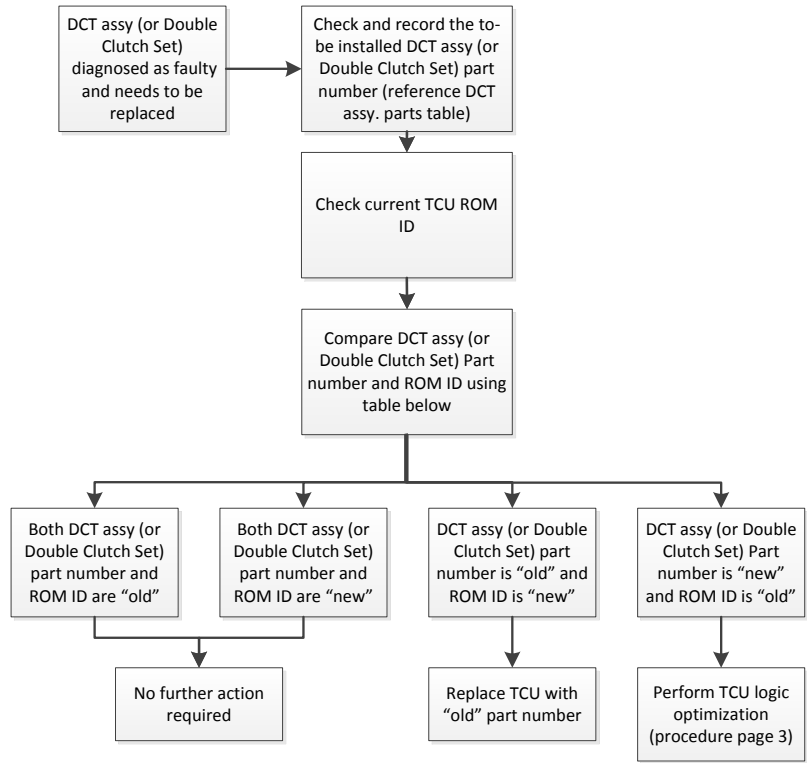
### ★ NOTICE

If parts must be ordered, be sure to order parts using the old part numbers listed in the tables on page 2-3, if available. If old parts are no longer available, new supersession parts may be ordered.

File Under: <Transmission>

Circulate To:     General Manager     Service Manager     Parts Manager  
 Service Advisors     Technicians     Body Shop Manager     Fleet Repair

### DCT Assembly / Double Clutch Set Replacement Flow Chart

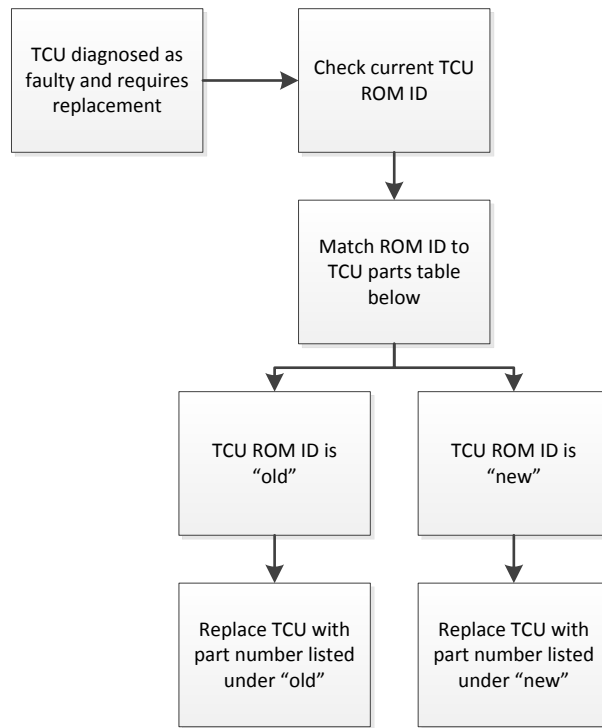


Model	ENG	TM	OLD		NEW	
			TCU ROM ID	<u>Dbl. Clutch Set (F833DS)</u>	TCU ROM ID	<u>Dbl. Clutch Set (F850)</u>
JFa	1.6T	7DCT	DJF0T16NS0 DJF0T16NS1 DJF0T16NS2 DJF0T16NS3 DJF0T16NS4 DJF0T16NS5	41200 2D101	DJF0T16NS9	41200 2D220
PS			DPS0T16NS0 DPS0T16NS1		DPS0T16NS4	
YDm			DYD0T16NS0 DYD0T16NS1 DYD0T16NS2		DYD0T16NS5	
Model	ENG	TM	OLD		NEW	
			TCU ROM ID	<u>DCT Assembly (F833DS)</u>	TCU ROM ID	<u>DCT Assembly (F850)</u>
JFa	1.6T	7DCT	DJF0T16NS0 DJF0T16NS1 DJF0T16NS2 DJF0T16NS3 DJF0T16NS4 DJF0T16NS5	43000 2D081	DJF0T16NS9	43000 2D086
PS			DPS0T16NS0 DPS0T16NS1	43000 2D190	DPS0T16NS4	43000 2D195
YDm			DYD0T16NS0 DYD0T16NS1 DYD0T16NS2	43000 2D101	DYD0T16NS5	43000 2D106

SUBJECT:

TRANSMISSION LOGIC IMPROVEMENT

**TCU Replacement Flow Chart**



Model	ENG	TM	OLD		NEW	
			TCU ROM ID	TCU P/N (F833DS)	TCU ROM ID	TCU P/N (F850)
JFa	1.6T	7DCT	DJF0T16NS0 DJF0T16NS1 DJF0T16NS2 DJF0T16NS3 DJF0T16NS4 DJF0T16NS5	95440 2DBE0	DJF0T16NS9	95440 2DBE1
PS			DPS0T16NS0 DPS0T16NS1	95440 2D850	DPS0T16NS4	95440 2D851
YDm			DYD0T16NS0 DYD0T16NS1 DYD0T16NS2	95440 2DDG0	DYD0T16NS5	95440 2DDG1

**TCU Logic Optimization Procedure:**


If necessary, to prevent this condition, the ECU should be reprogrammed using the KDS download, as described in this bulletin.

Upgrade Event Name
361.JFA GAMMA 1.6TGDI 7DCT TCU UPGRADE FOR DOUBLE CLUTCH SET REPLACEMENT
362.PS PE GAMMA 1.6TGDI 7DCT TCU UPGRADE FOR DOUBLE CLUTCH SET REPLACEMENT
363.YDM GAMMA 1.6TGDI 7DCT TCU UPGRADE FOR DOUBLE CLUTCH SET REPLACEMENT

**\* NOTICE**

- A fully charged battery is necessary before ECU upgrade can take place. It is recommended that the Midtronics GR8-1299 system be used in ECU mode during charging. **DO NOT** connect any other battery charger to the vehicle during ECU upgrade.
- All ECU upgrades must be done with the ignition key in the 'ON' position.
- Be careful not to disconnect the VCI-II connected to the vehicle during the ECU upgrade procedure.
- **DO NOT** start the engine during ECU upgrade.
- **DO NOT** turn the ignition key 'OFF' or interrupt the power supply during ECU upgrade.
- When the ECU upgrade is completed, turn the ignition 'OFF' and wait 10 seconds before starting the engine.
- **ONLY** use approved ECU upgrade software designated for the correct model, year.

**\* NOTICE**

Before attempting an ECU upgrade on any Kia model, make sure to first determine whether the particular model is equipped with an immobilizer security system. Failure to follow proper procedures may cause the PCM to become inoperative after the upgrade and any claims associated with this repair may be subject to chargeback. 

**ROM ID INFORMATION TABLE:**

Upgrade Event #361, #362, and #363

Model	ENG	TM	ROM ID	
			Previous	New
JFa	1.6T	7DCT	DJF0T16NS0 DJF0T16NS1 DJF0T16NS2 DJF0T16NS3 DJF0T16NS4 DJF0T16NS5	DJF0T16NS9
PS			DPS0T16NS0 DPS0T16NS1	DPS0T16NS4
YDm			DYD0T16NS0 DYD0T16NS1 DYD0T16NS2	DYD0T16NS5

*To verify the vehicle is affected, be sure to check the Calibration Identification of the vehicle's ECM ROM ID and reference the Information Table as necessary.*

**\* NOTICE**

Prior to performing the ECU upgrade, be sure to check that the KDS is fully charged.

SUBJECT: TRANSMISSION LOGIC IMPROVEMENT

1. Connect the VCI-II to the OBD-II connector, located under the driver's side of the instrument panel.

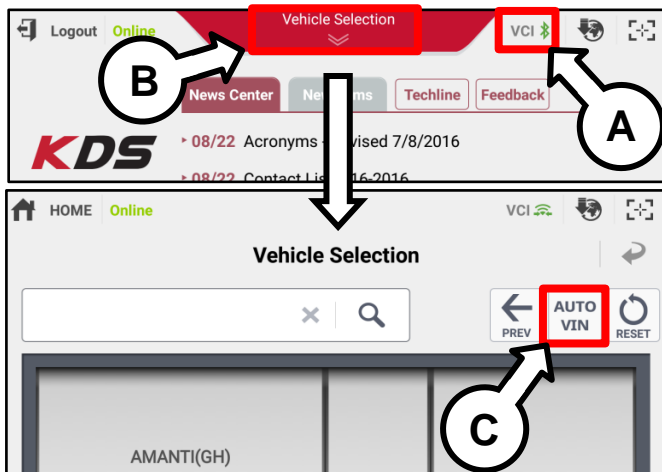
**\* NOTICE**  
 The ECU upgrade function on KDS operates wirelessly. It is not necessary to perform the upgrade via USB cable.



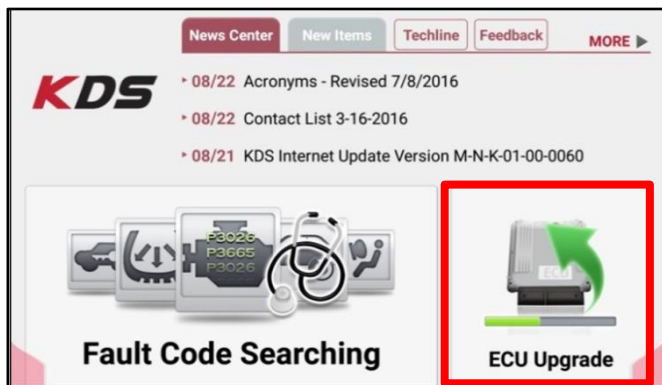
2. With the ignition ON, turn ON the KDS tablet. Select **KDS** from the home screen.



3. Confirm communication with VCI (A) and then configure the vehicle (B) using the **AUTO VIN** (C) feature.



4. Select **ECU Upgrade**.



SUBJECT: TRANSMISSION LOGIC IMPROVEMENT

- The KDS will check the server for recently uploaded Events and then automatically download **Upgrade Event #361, #362, or #363**.

**\* NOTICE**  
 The vehicle must be identified in Vehicle Selection to download an Event for that vehicle.

After the download is complete, the program will shut down to install. Please wait until the program restarts.

Event	Status
271.QF 2.4GDI DTC P0171,P0420 LOGIC IMPROVEMENT	Downloading
273.TF 2.4GDI DTC P0171,P0420 LOGIC IMPROVEMENT	Ready

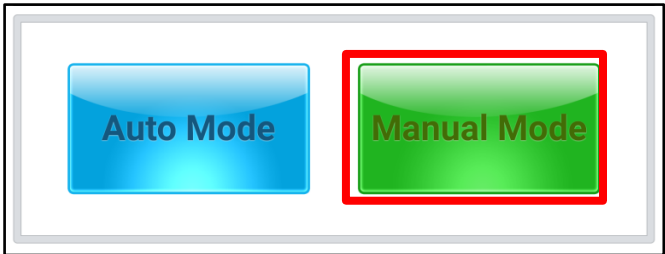
36%

Do not touch any system buttons while performing this function.

KDS screenshot shown above is for demonstration purposes only. Events shown in screenshot are not applicable to this bulletin.

- Select **Manual Mode**.

**\* NOTICE**  
 The ECU upgrade can only be performed in Manual Mode.



**Manual Mode ECU Upgrade Passwords**

Menu	Password
JFa GAMMA 1.6TGDI 7DCT (N.A) : 95440-2DBE0	4120
PS PE GAMMA 1.6TGDI 7DCT (N.A) : 95440-2D850	2850
YDm GAMMA 1.6TGDI 7DCT (N.A) : 95440-2DDG0	1120

- Select the **A/T** system under the System selection menu. Select **Upgrade Event #361, #362, or #363** and select **Upgrade** to continue.
- Select the appropriate control unit part number with reference to the ROM ID Information Table on page 4 and select **OK**.
- Enter the appropriate password from the Manual Mode password table above and select **OK**.
- The upgrade will begin and the progress of the upgrade will appear on the bar graph.
- When instructed on the KDS, turn the ignition **OFF** for ten (10) seconds then back on. Touch **OK** to continue.
- Once the upgrade is complete, touch **OK** to finalize the procedure.
- When prompted, select **YES** to check for Diagnostic Trouble Codes (DTC) and erase any DTCs stored such as EPS, ESC, and TPMS that may have been set during the upgrade.
- Start the engine to confirm proper operation of the vehicle.

SUBJECT:

## TRANSMISSION LOGIC IMPROVEMENT

## AFFECTED VEHICLE RANGE:

Model	Production Date Range
Soul (PS)	2017MY through 2018MY
Forte (YDm)	2017 MY through 2018MY
Optima (JFa)	2016 MY through 2018MY

## WARRANTY INFORMATION:

**N Code: I3A C Code: ZZ3**

Model	Claim Type	Causal P/N	Qty.	Repair Description	Labor Op Code	Op Time	Replacement P/N	Qty.
PS, JFa, & YDm	W	Refer to EPC	0	Transmission Logic Improvement (after DCT / Double Clutch Set Replacement)	95441F07	0.3 M/H	N/A	0