

MODEL: J Series	TYPE: Field Change Program	SECTION/GROUP: 07-Electrical	DATE: 06/10/2019
---------------------------	--------------------------------------	--	----------------------------

Customer Complaint:

Motor Coach Industries ("MCI") has become aware that on MY2018-J4500 coaches, the potential exists for water intrusion into the coach in the stepwell, dash and driver area from the front marker lights.

Cause:

Current marker light gasket wasn't avoiding water intrusion into the coach.

Corrective Action:

MCI urges owners of the affected coaches to have the following procedure performed as soon as possible.



Read this entire procedure before beginning work.

Use Safe Shop Practices At All Times.

To avoid personal injury:

- a. Turn the main battery disconnect switch to the OFF position.***
- b. Ensure that both the front and the rear wheels are chocked.***
- c. Position the ENGINE RUN and ENGINE START switches on the engine compartment remote control box to the OFF position.***
- d. Allow enough time for components to cool down prior to working in the engine compartment.***

1.0 Material requirements:

Service Kit **T07-3611** contains the following parts:

ITEM	PART NO.	QTY	U/M	DESCRIPTION
1	07-07-1920	14	EA	GASKET – MARKER LIGHT
2	19-01-1635	28	EA	SCREW – PANHEAD, 10-32x1.5,
3	19-03-0602	28	EA	NUT-WELL, BRASS INSERT, #10-32 UNF
4	21-7212-18	1	TUB	ADHESIVE-LOCTITE, BLUE

2.0 Removing the front marker lights, gaskets, and wellnuts

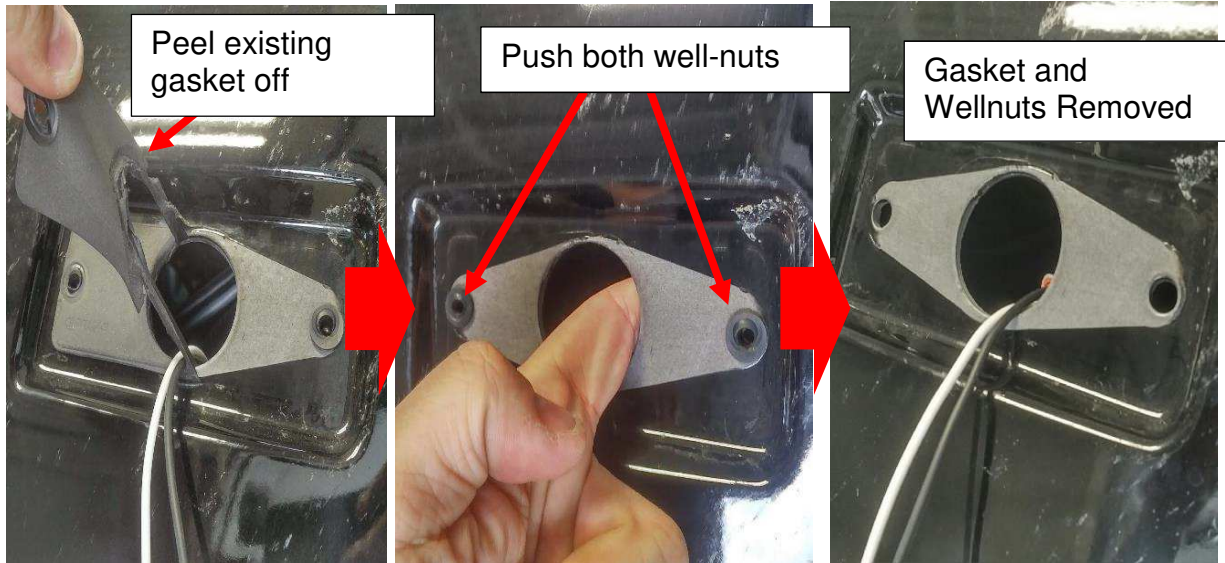
Remove the 7 front marker lights from the front of the vehicle by removing and discarding the two 8-32 screws on each light.



Disconnect the marker light. Do not let the Deutsch connector fall into the vehicle.

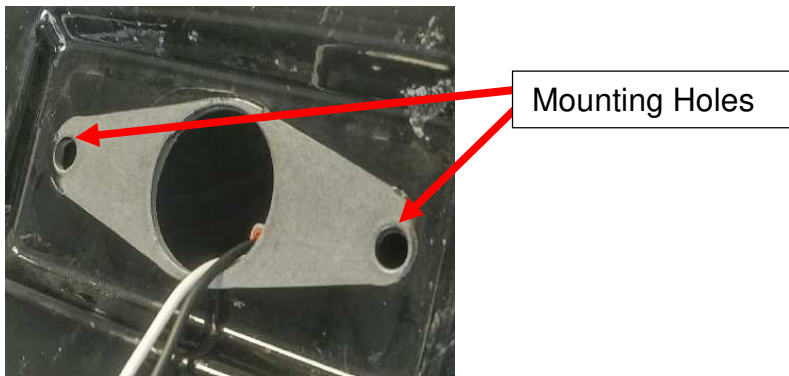


Peel off the existing gaskets, then push the existing wellnuts out of the holes. Discard old gaskets and wellnuts.

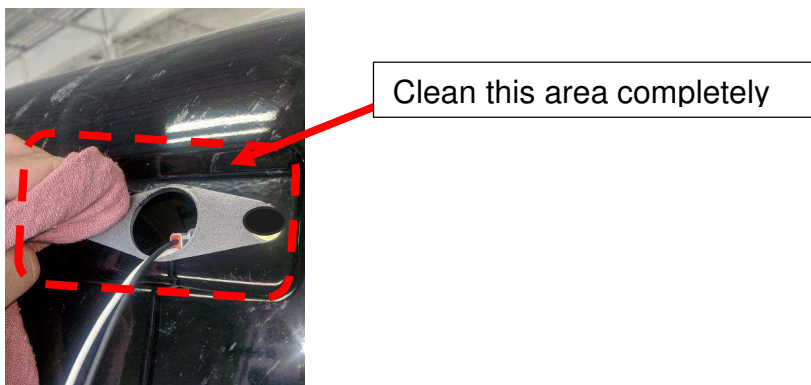


3.0 Installing the well-nuts

Before installing well nuts, enlarge the mounting holes using 3/8 reamer.



Using warm water and soap, or a suitable adhesive remover, clean the marker light area completely.



Apply 2 drops of Loctite, 21-7212-18, to the well nuts, 19-03-0602, and insert them in the mounting holes. Firmly press the well nuts into position into the mounting holes and let the adhesive dry for 1 minute.



Well nuts inserted in the mounting holes

4.0 Applying the new gasket

Peel the protective backing off the 07-07-1920 gasket to expose the adhesive and apply the gasket to the fiberglass, using the screw-holes as a guide.



Remove Protective Backing from Adhesive



Gasket Applied

5.0 Install the marker lights

Reconnect the Deutsch connector to each marker light. Apply Loctite, 21-7212-182, to the 19-01-1635 screws and fasten the marker light back to the coach. Do not exceed 5 Inch-Pounds torque.



Fasten 19-01-1635
Screws to 5 Inch-Pounds

6.0 Updating the Rear Marker Lights

Repeat sections 1 through 4 for rear marker lights.



Procedure complete



7.0 Field Change Program Conditions:

The parts required for this change will be supplied without charge.

A labor allowance of 1 hour will be granted for performing this procedure.

This labor allowance will be credited to your MCI Fleet Support Parts Account on receipt of the attached "MCI Field Change Program Verification Form" and a "Warranty Claim Form" as detailed in your Owner Warranty manual to MCI's Warranty department. A "MCI Field Change Program Verification Form" needs to be submitted for each VIN affected. Photocopy the attached "MCI Field Change Program Verification Form" as required for the number of affected coaches in your fleet.

This program will end on August 31, 2019.

Motor Coach apologizes for any inconvenience resulting from this campaign, but urges you to implement this change as soon as possible.

Sincerely,

Motor Coach Industries.



7.1 MCI FIELD CHANGE PROGRAM (FCP) VERIFICATION

CONTACT INFORMATION	
CUSTOMER NAME: _____	
(PLEASE PRINT)	
FCP INFORMATION – ONE FORM PER UNIT	
FCP#: _____	Coach Model _____ Model Year _____
COACH SERIAL #: (At least the last 5 digits)	DATE COMPLETED __ / __ / __
MILEAGE:	
IMPORTANT: TO RECEIVE CREDIT FOR ANY ALLOWABLE LABOR CHARGES, THIS VERIFICATION FORM MUST BE RETURNED TO MCI UPON COMPLETION OF THE FCP.	
SUBMITTED BY: (Please Print) _____	
	DATE __ / __ / __
TITLE: (Please Print) _____	
SIGNATURE: _____	
COMMENTS: 	

FAX TO: 800-360-8886



Mail or fax the completed limited warranty claim form and verification form to MCI's warranty department, or photocopy and mail to:

MCI Fleet Support

Attn: Warranty Department

7001 Universal Coach Drive Louisville, KY 40258

Fax Number 1-800-360-8886

To receive credit for the hours used to complete this task. Contact the MCI Fleet Support Technical Center at 1-800-241-2947 for any further information.