



July 11, 2019

Product Change Notice - New fastener for Quick Disconnect Hinge Bracket, PN 677578

Dear Valued Customer:

Please be advised LCI is changing a fastener in its optional Quick Disconnect Hinge Brackets for Gen 3 Patio Rail Kits.

The current fastener is a detent ring pin (Fig. 1A). The new fastener is a snapper pin (Fig. 2A). The new snapper pin was determined to provide a more secure fit on the hinge brackets.

The new snapper pin is inserted in the same hole as the ring pin and snaps together. There is no change in function of the rail kit with the new fastener. The current ring pin part number is 671928. The snapper pin part number is 368162. The top level part number for the Quick Disconnect kit remains the same (677578).

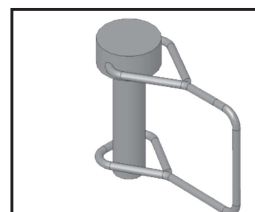
The change will be made on a running basis starting around mid- to late August.

Fig.1



Current Fastener

Fig.2



New Fastener

If you have any questions, please feel free to call me directly or your LCI representative. We value and appreciate your business and partnership.

Sincerely,

Brian Hess

VP of Innovation

Lippert Components, Inc.

c: 574.361.5185

bhess@lci1.com

Frequently Asked Questions:

- 1. Will a new part number be required?** Yes, the current ring pin part number is 671928. The snapper pin part number is 368162. The top level part number for the Quick Disconnect kit remains the same (677578).
- 2. Does the price change for the item?** No, there is no price change.
- 3. Is the new part wholly interchangeable with the previous version of the part?** Yes, the fasteners are interchangeable.
- 4. Does the customer need to replace inventory?** No, the change will be made on a running basis, starting around mid- to late August. .