



# Technical Service Bulletin

SUBJECT:		No: <b>TSB-19-55-004</b>	
<b>CORRECTIONS TO HEATER UNIT &amp; BLOWER DISASSEMBLY &amp; ASSEMBLY PROCEDURES - SMR</b>		DATE: <b>July 2019</b>	
		MODEL: <b>2012-16 i-MiEV</b>	
<b>CIRCULATE TO:</b>	<input type="checkbox"/> GENERAL MANAGER	<input type="checkbox"/> PARTS MANAGER	<input checked="" type="checkbox"/> TECHNICIAN
<input checked="" type="checkbox"/> SERVICE ADVISOR	<input checked="" type="checkbox"/> SERVICE MANAGER	<input checked="" type="checkbox"/> WARRANTY PROCESSOR	<input type="checkbox"/> SALES MANAGER

## PURPOSE

This TSB updates the Heater, Air Conditioning and Ventilation section of the affected Service Manuals, to correct the heater unit and blower disassembly and assembly procedures.

## AFFECTED VEHICLES

- 2012 - 2014, 2016 i-MiEV

## AFFECTED SERVICE MANUAL

- 2012 - 2014, 2016 i-MiEV Service Manuals, Group 55-Heater, Air Conditioning and Ventilation



Please make the indicated changes to the 2012 - 2014, 2016 i-MiEV Service Manuals, Group 55-Heater, Air Conditioning and Ventilation -> Heater Unit and Blower Assembly -> Disassembly and Assembly.

**REMOVAL SERVICE POINT**

**<<A>> A/C COMPRESSOR SUCTION HOSE AND A/C CONDENSER OUTLET PIP DISCONNECTION**

**CAUTION**

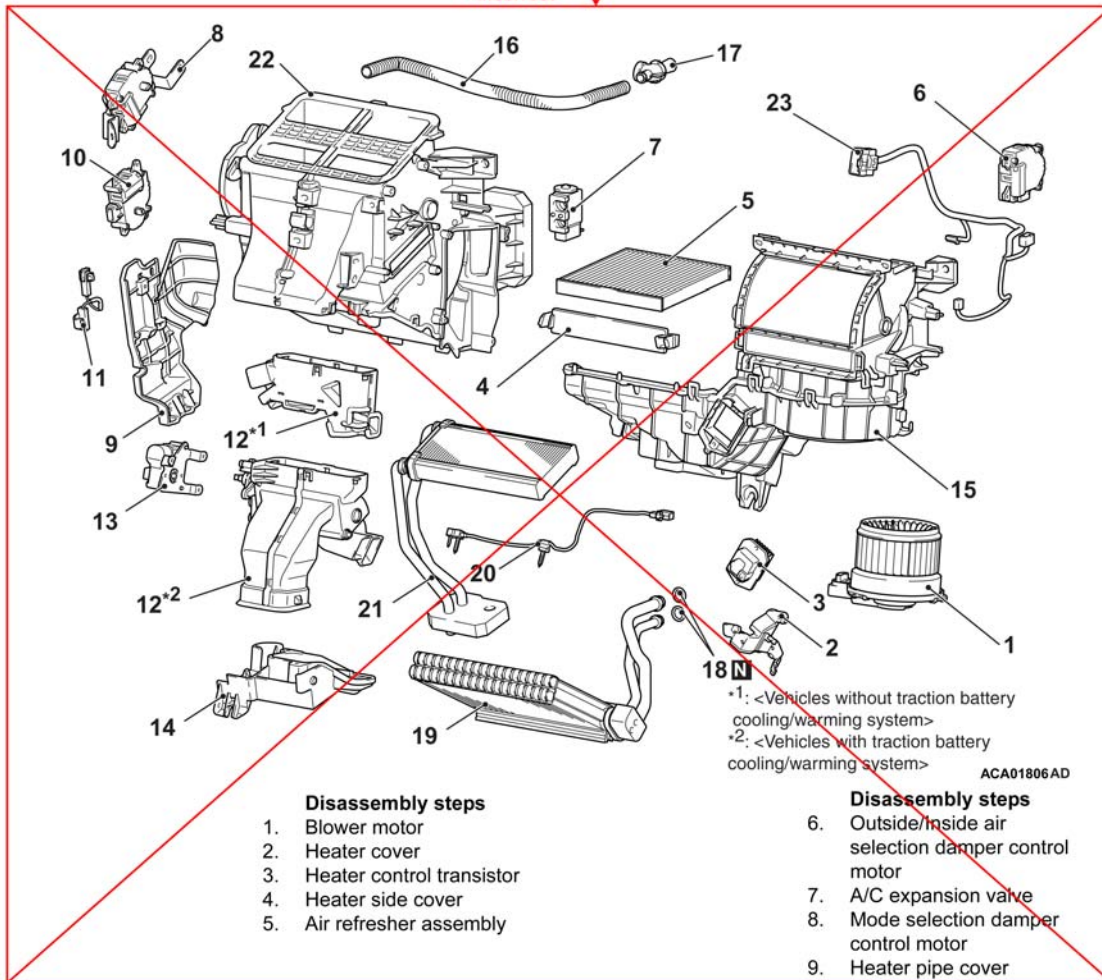
- Use the plug which is not breathable because A/C compressor oil or receiver have high hygroscopicity.
- For the compressor oil and installation oil for the piping O-ring, use the oil MA68EV dedicated for the A/C compressor EV30AN3. If an oil other than the MA68EV is used, even if it is only a small amount, the electric insulation is considerably deteriorated and a leakage may occur.

Plug the removed nipple of the pipe, hose and expansion valve to prevent the entry of dust and dirt.

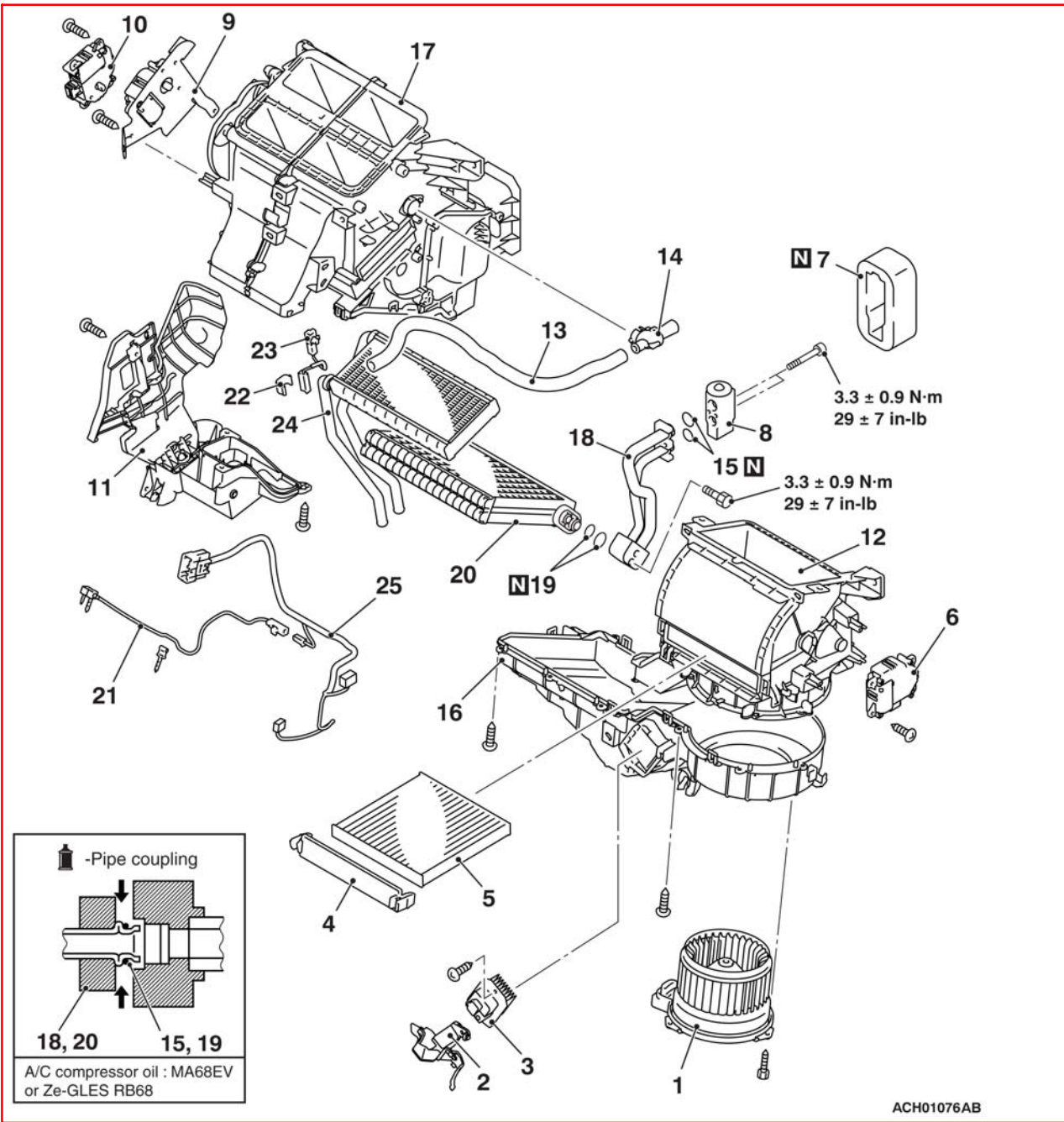
**DISASSEMBLY AND ASSEMBLY**

See next two pages

<Incorrect>



<Correct>



**<Incorrect>**

**Disassembly steps**

10. Air mixing damper control motor
11. Heater water temperature sensor
12. Foot heater duct
13. Foot area/traction battery air outlet selection damper motor <Vehicles with traction battery cooling/warming system>
14. Heater under cover
15. Blower case
16. Heater hose
17. Heater control vacuum aspirator
18. O-ring
19. A/C evaporator
20. A/C thermistor
21. Heater core
22. Heater assembly
23. Heater harness

**<<A>>**

**<<B>>**

**<Correct>**

**Disassembly steps**

1. Blower motor
2. Heater cover
3. Heater control transitor
4. Clean air filter cover
5. Clean air filter
6. Outside/Inside air selection damper control motor
7. Heater unit pad
8. A/C expansion valve
9. Mode selection damper control motor
10. Air mixing damper control motor
11. Cover
12. Blower case
13. Heater hose
14. Heater control vacuum aspirator
15. O-ring
16. Blower case sub assembly
17. Heater case
18. A/C pipe
19. O-ring
20. A/C evaporator
21. Fin thermo sensor
22. Heater clamp
23. Heater water temperature sensor
24. Heater core
25. Heater harness

**>>B<<**

**>>A<<**

**<<A>>**

**<Delete>**

**DIASSEMBLY SERVICE POINTS**

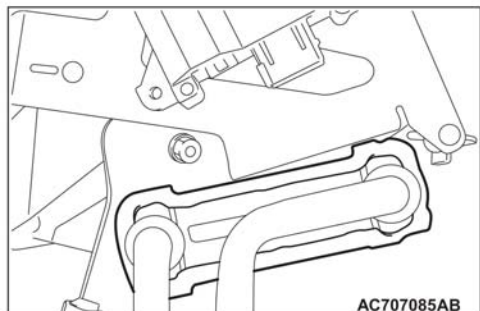
**<<A>> FOOT HEATER DUCT REMOVAL**

Remove the foot duct avoiding the claws according to the procedure shown in the figure at the left.

**<Vehicles without traction battery cooling/warming system>**  
 ACA02548

**<Vehicles with traction battery cooling/warming system>**  
 AC902477  
 ACB00364AB





<Correct>  
A  
<Incorrect>

**<<B>> HEATER CORE REMOVAL**

Remove the heater core holding the outside of the heater core, not the pipe.

<Added>

**>>B<< HEATER UNIT PAD INSTALLATION**

**⚠ CAUTION**

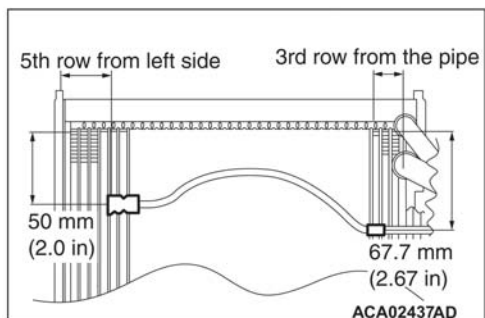
After the pad is attached, make sure that there is no breakage or crease. If yes, air or water leaks may be present at the heater unit.

<Correct>  
**FIN THERMO SENSOR**

**ASSEMBLY SERVICE POINT**

>>A<< ~~A/C THERMISTOR~~ INSTALLATION

Install the fin thermo sensor at the position shown in the figure.



**INSPECTION**

M1552014304758

**FIN THERMO SENSOR CHECK**

When the resistance value between the sensor terminals is measured under the temperature conditions at 2 points or more, the resistance value shall almost satisfy the value indicated in the figure.

