

# TS 1034484 - Finding BOM's / Bill of Materials in Parts Pro

---

## **Vehicles:**

This applies to: Cascadia, Columbia, M2, FLD, and Sterling

## **Model Years:**

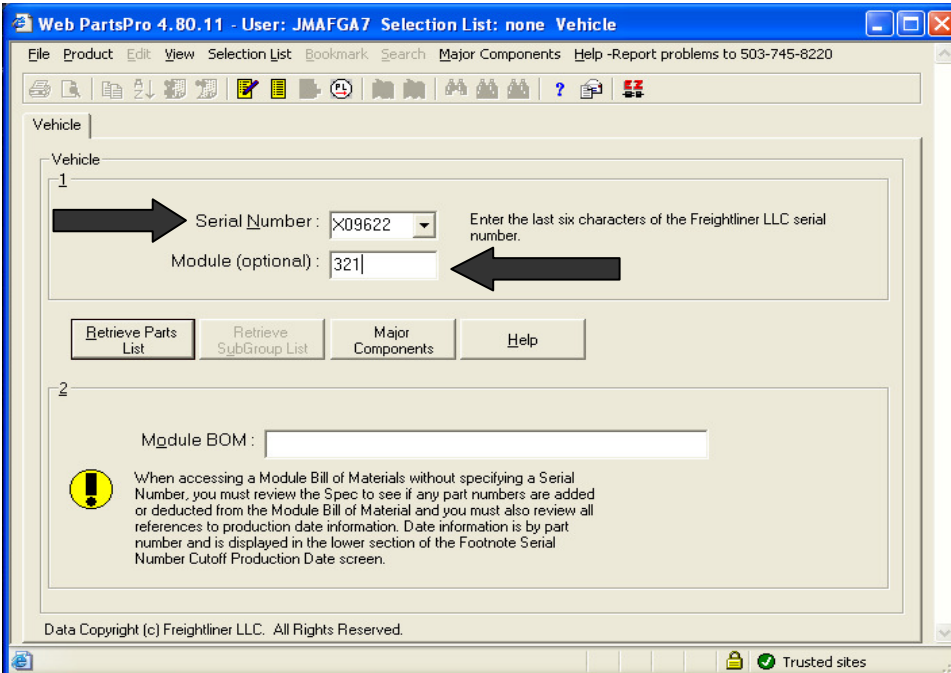
2008 and older

This document that contains a more organized list of BOM's in Parts Pro along with a diagram of the truck which shows the BOM for each harness. There are one or two other lists on here but I feel like this one is a little better laid out and easier to search. This document is a .PDF so you can use Ctrl + F to search the document if you are not familiar with that function. There is also a highlighter function that you can use to highlight your most commonly used BOM's.

All Freightliner and Sterling vehicles consist of various electrical subsystems. These subsystems are designated by their particular function and consist of a number of modules (Bills of Material) that contain the applicable electrical diagrams and harnesses for the subsystem. A single circuit may utilize several modules within a subsystem. This informational guide provides a list of the subsystems and the modules that comprise the subsystems. The following instructions will assist in using this guide.

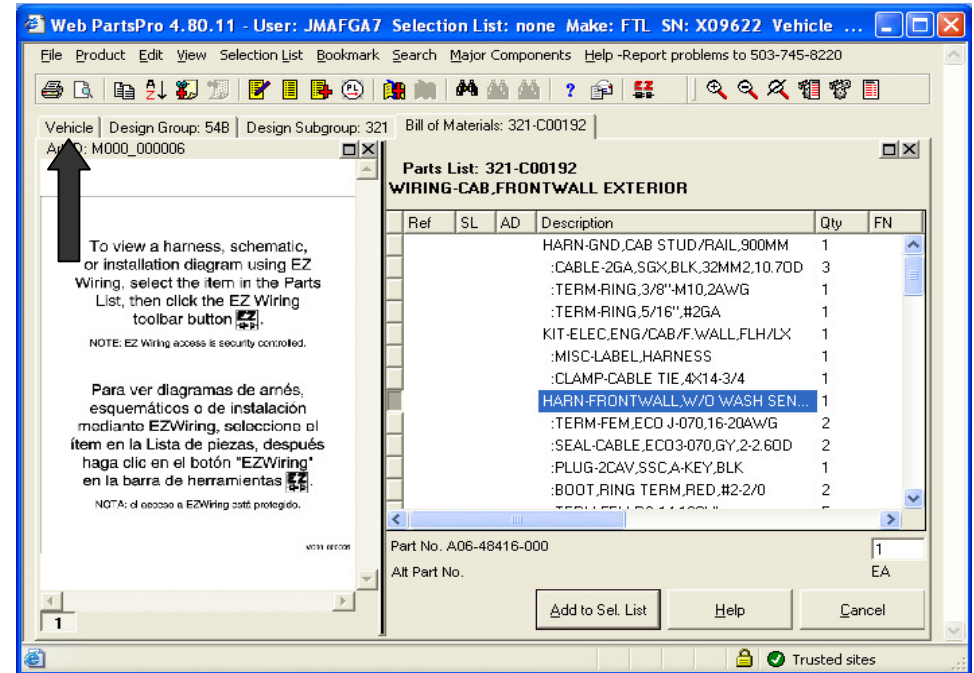
- 1) Each Subsystem contains a "Primary Module" which should be checked for electrical information using PartsPro. Some serial number vehicles based on options or build date may not contain a particular subsystem "Primary Module". If so, check the commodity harness modules listed for the Subsystem for wiring and connectors.
- 2) "Commodity Harness Modules" are modules which contain a harness which provides wiring for multiple functions. Examples of a commodity harness are the Main Cab Harness (MCH) found in Module 320 and the Chassis Wiring found in Module 288
- 3) Wiring for a given subsystem circuit may be contained in both a "Primary Module" and the "Commodity Harness Modules". The applicable commodity harnesses will vary by vehicle make / model which is found in this guide

- 4) Illustrations of various vehicle makes / models are provided to show the approximate location of various commodity harnesses on the respective vehicles
- 5) Each Subsystem listed contains the "Primary Subsystem Module" and also applicable commodity harness modules. The commodity harnesses have model designations (CAS / FLX / FLM / FLD / STL) to assist in determining which modules will contain the electrical information for a subsystem on a particular model vehicle
- 6) Lookup of electrical information on PartsPro is simplified when the module (primary or commodity harness) is known. See Figure 1 and 2 for electrical information lookup after determining the applicable module from the Subsystem Guide



- 1) Open Parts Pro and at the initial screen (shown)
- 2) Enter the vehicle serial number,
- 3) Enter the electrical module from the subsystem list to be searched
- 4) Parts Pro will open the bill of material for the module number entered.

Figure 1



- 5) View the desired diagrams and harnesses via EZ Wiring,
- 6) When completed with the module, select the "Vehicle" tab to return to the initial screen
- 7) Enter the next module to search from the subsystem list

Figure 2

- 7) For changes / suggestions to the Electrical Subsystem Module List, do the following:
- Call Service Technical Support at (503) 745-7769. Before calling have the vehicle serial number, subsystem, module information and the specific issue ready to discuss

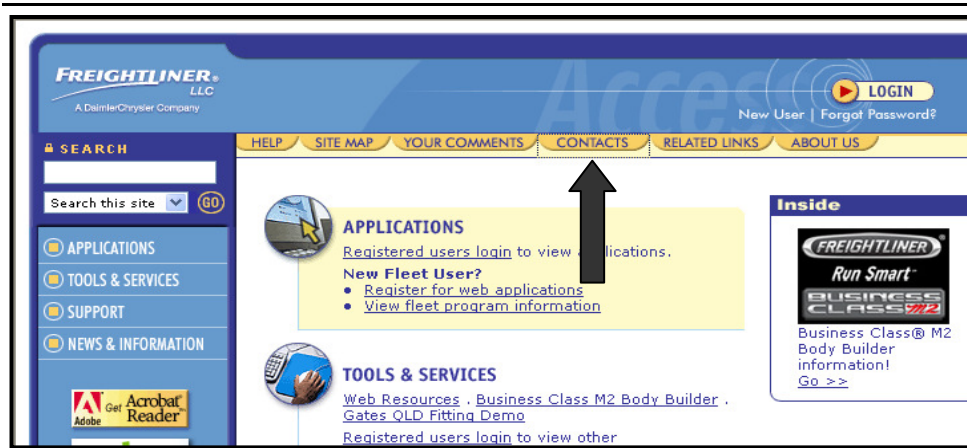


Figure 3

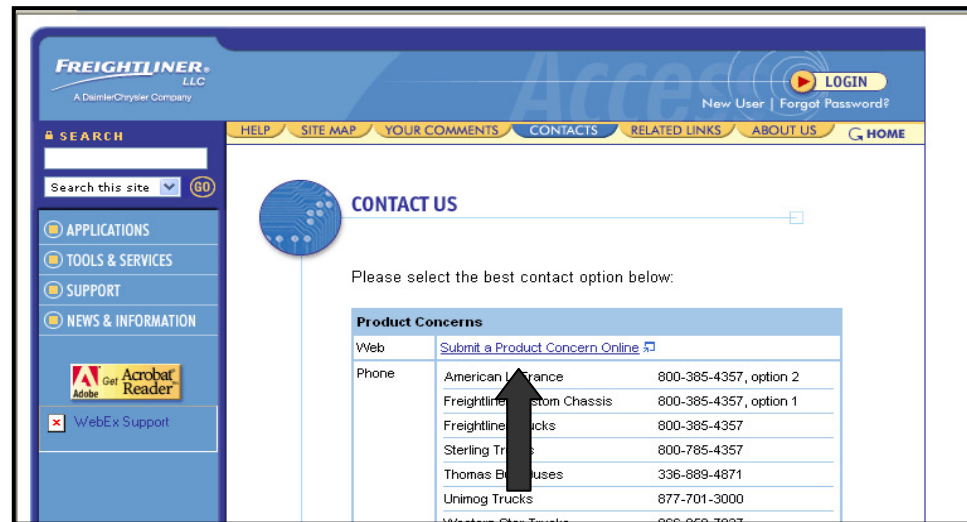


Figure 4

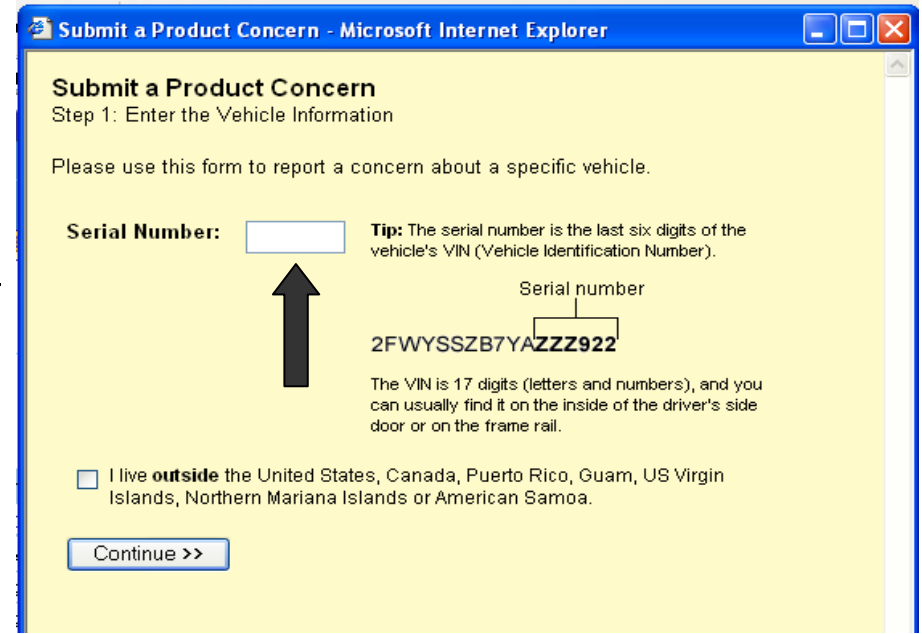


Figure 5

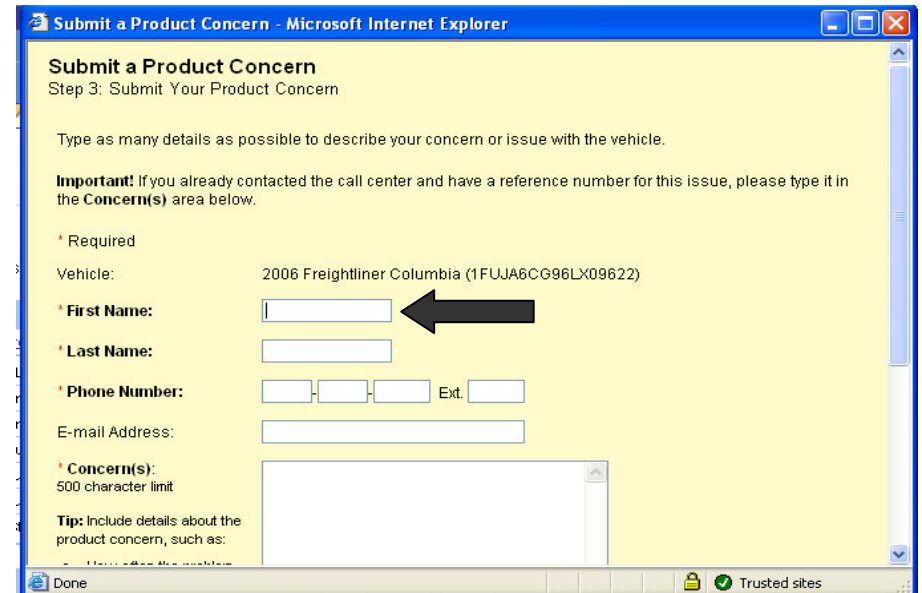


Figure 6



MODULE	DESCRIPTION	MODELS
<b>ANTILOCK BRAKE SYSTEM</b>		
28A	WIRING-CHAS,REAR	CAS
285	CIRCUIT PROTECTION	STL
287	WIRING-CAB, OVERHEAD & REAR/SLPR	CAS
288	CHASSIS WIRING	FLM STL CAS
308	WIRING-SUPPLEMENTAL RECEPTACLE	
320	MAIN CAB HARNESS (MCH)	FLX STL CAS
321	WIRING-CAB,FRTWALL, EXTERIOR	FLM
332	WIRING-ABS,CHASSIS,FWD	
333	WIRING-ABS,CHASSIS,REAR	
<b>330</b>	<b>WIRING - ABS,CAB</b>	<b>&lt; PRIMARY MODULE &gt;</b>
<b>&lt; RELATED ELECTRICAL COMPONENT MODULES &gt;</b>		
309	SUPPLEMENTAL TRAILER CABLE	
331	SUPPLEMENTAL RECEPTACLE	
334	ADDITIONAL SUPPL. RECEPTACLE	
490	AIR/HYD VALVE-ANTILOCK	
493	VALVE - ANTILOCK,HYDRAULIC	
49A	ABS CONTROL UNIT	
<b>AUXILIARY CIRCULATION FAN - WINDSHIELD &amp; SLEEPER</b>		
287	WIRING OVERHEAD	FLD CAS
320	MAIN CAB HARNESS (MCH)	CAS
<b>71W</b>	<b>WIRING - FAN SLEEPER / WINDSHIELD</b>	<b>&lt; PRIMARY MODULE &gt;</b>
<b>&lt; RELATED ELECTRICAL COMPONENT MODULES &gt;</b>		
716	FAN-WINDSHIELD	
718	FAN-SLEEPER/BODY	
<b>AIR DRYER</b>		
285	CIRCUIT PROTECTION	STL
288	CHASSIS WIRING	FLX CAS
320	MAIN CAB HARNESS (MCH)	FLX
321	WIRING-CAB,FRTWALL, EXTERIOR	FLM
<b>48A</b>	<b>WIRING - AIR DRYER</b>	<b>&lt; PRIMARY MODULE &gt;</b>
<b>&lt; RELATED ELECTRICAL COMPONENT MODULES &gt;</b>		
477	AIR TANK DRAIN	
480	DRYER-AIR	
485	AIR SYSTEM ACCESS,REMOTE	
<b>ALTERNATOR, VOLT, AMP, CHARGING</b>		
125	WIRING-ALT/CHARGE	FLX FLM STL FLD CAS
<b>12C</b>	<b>WIRING - ALTERNATOR ACCY'S</b>	<b>&lt; PRIMARY MODULE &gt;</b>
286	ENGINE WIRING	FLD CAS
320	MAIN CAB HARNESS (MCH)	FLD
321	WIRING-CAB,FRTWALL, EXTERIOR	CAS
<b>&lt; RELATED ELECTRICAL COMPONENT MODULES &gt;</b>		
124	ALTERNATOR	
836	GAUGE-VOLTMETER	
846	GAUGE-AMMETER	
277	CHARGER-BATTERY	

MODULE	DESCRIPTION	MODELS
<b>AUDIO, RADIO / SPEAKERS</b>		
287	WIRING - CAB OVERHEAD	FLX FLD CAS
32A	CAB MULTIPLEX	CAS
320	MAIN CAB HARNESS (MCH)	FLX FLM STL CAS
656	SWITCH PANEL & WRG DOOR	FLX FLM
<b>74D</b>	<b>WIRING - RADIO / SPEAKER</b>	<b>&lt; PRIMARY MODULE &gt;</b>
<b>&lt; RELATED ELECTRICAL COMPONENT MODULES &gt;</b>		
746	RADIO-AM/FM/CASSETTE/CD	
750	SPEAKER-RADIO,AM/FM/CASS	
751	SPEAKER-RADIO,2-WAY	
753	ANTENNA-RADIO,AM/FM	
75A	RADIO-MTG,UHF/VHF	
75B	ANTENNA-RADIO,UHF/VHF	
78B	DIGITAL SATELLITE AUDIO RCVR	
78C	DIGITAL SATELLITE AUDIO ANT	
<b>AXLE INSTRUMENTATION &amp; WARNING</b>		
288	CHASSIS WIRING	FLX FLD CAS
<b>865</b>	<b>WIRING / SENDER - AXLE TEMP</b>	<b>&lt; PRIMARY MODULE &gt;</b>
<b>&lt; RELATED ELECTRICAL COMPONENT MODULES &gt;</b>		
866	GAUGE-TEMPERATURE,AXLE OIL	
<b>AXLE, LIFT, PUSHER &amp; TAG CONTROLS</b>		
288	CHASSIS WIRING	CAS
320	MAIN CAB HARNESS (MCH)	CAS
<b>87F</b>	<b>WIRING - AXLE LIFT</b>	<b>&lt; PRIMARY MODULE &gt;</b>
<b>&lt; RELATED ELECTRICAL COMPONENT MODULES &gt;</b>		
60S	ELEVATION CONTROL-EXT TAG AXLE	
874	AIR PIPING-AXLE LIFT,CAB	
896	AIR PIPING-AXLE LIFT,CHASSIS	
<b>AXLE LOCK, DCDL, LEFT TO RIGHT</b>		
288	CHASSIS WIRING	FLX FLD CAS
320	MAIN CAB HARNESS (MCH)	CAS
<b>87B</b>	<b>WIRING - DRIVER CONT. TRAC DEV.</b>	<b>&lt; PRIMARY MODULE &gt;</b>
452	TRACTION CONTROL-DRIVE AXLE(S)	
<b>AXLE LOCK, INTERAXLE, FORWARD TO REAR</b>		
288	CHASSIS WIRING	FLX
320	MAIN CAB HARNESS (MCH)	FLD CAS
<b>87A</b>	<b>WIRING - INTERAXLE DIFF LOCKOUT</b>	<b>&lt; PRIMARY MODULE &gt;</b>
<b>&lt; RELATED ELECTRICAL COMPONENT MODULES &gt;</b>		
878	AIR PP & CONT-DIFF LKOUT,CAB	
<b>AXLE, SHIFT, 2 SPEED, ALL WHEEL DRIVE (AWD)</b>		
376	TRANS CASE/SPLIT SHFT PTO CONT	
<b>87C</b>	<b>WIRING - AXLE SPEED SHIFT</b>	<b>&lt; PRIMARY MODULE &gt;</b>
898	AIR PIPING-AXLE SHIFT,CHASSIS	
<b>&lt; RELATED ELECTRICAL COMPONENT MODULES &gt;</b>		
441	REAR AXLE ACCESSORIES	
876	AIR PP/ELECT AXLE SHIFT,CAB	
<b>BATTERY, BATTERY CABLES &amp; BATTERY ISOLATORS</b>		
281	CABLE-BATTERY,IN BOX	
286	ENGINE HARNESS	CAS
291	CABLE-BATTERY,POWER & GROUND	
295	JUMPSTART PROVISION	
29A	POWER HARNESS-BATTERY	
<b>306</b>	<b>BATTERY ISOLATOR/CONTROL</b>	<b>&lt; PRIMARY MODULE &gt;</b>
321	WIRING-CAB,FRTWALL, EXTERIOR	CAS
<b>&lt; RELATED ELECTRICAL COMPONENT MODULES &gt;</b>		
292	BATTERY	
293	BATTERY SHUTOFF SWITCH	

MODULE	DESCRIPTION	MODELS
<b>BRAKE SYSTEM, SERVICE &amp; PARK</b>		
186	WIRING-FOOT PEDAL SYSTEM	
28A	CIRCUIT PROTECTION	CAS
285	CIRCUIT PROTECTION	STL <sup>4</sup>
286	ENGINE HARNESS	FLX STL FLD
288	CHASSIS WIRING	FLX FLM CAS
294	LAMP-STOP/TAI/TURN/BACKUP	
301	WIRING-TURN/STOP/TAILLAMP	CAS
320	MAIN CAB HARNESS (MCH)	FLX STL FLD CAS
486	WARNING-LOW AIR PRESSURE	
<b>877</b>	<b>WIRING - SERVICE / PARK BK</b>	<b>&lt; PRIMARY MODULE &gt;</b>
87H	WIRING-LOW AIR INDICATOR	
<b>&lt; RELATED ELECTRICAL COMPONENT MODULES &gt;</b>		
131	AIR PIPING-COMPRESSOR TO TANK	
435	BRAKE-PARKING,DRIVELINE	
838	GAUGE-APPLICATION AIR	
840	GAUGE-AIR SYSTEM PRESSURE	
868	GAUGE-PRESSURE,ADDITIONAL	
<b>COLLISION AVOIDANCE &amp; WARNING (CAWS)</b>		
288	CHASSIS WIRING	FLX CAS
320	MAIN CAB HARNESS (MCH)	CAS
321	WIRING-CAB,FRTWALL, EXTERIOR	CAS
<b>736</b>	<b>OBSTACLE DETECTION SYSTEM</b>	<b>&lt; PRIMARY MODULE &gt;</b>
<b>&lt; RELATED ELECTRICAL COMPONENT MODULES &gt;</b>		
73B	ROAD IMAGING SYSTEM-FORWARD	
73C	SOFTWARE-ROAD IMAGING	
<b>CITIZENS BAND RADIO, (CB)</b>		
287	WIRING - CAB OVERHEAD	FLX
656	SWITCH PANEL & DOOR WRG	FLM
320	MAIN CAB HARNESS (MCH)	FLX CAS
<b>748</b>	<b>RADIO-CB / TWO-WAY</b>	<b>&lt; PRIMARY MODULE &gt;</b>
<b>&lt; RELATED ELECTRICAL COMPONENT MODULES &gt;</b>		
752	ANTENNA-AND/OR MTG,CB/TWO WAY	
<b>CLOCK, CAB &amp; SLEEPER</b>		
287	WIRING - CAB OVERHEAD	FLX CAS
320	MAIN CAB HARNESS (MCH)	FLX CAS
738	<b>CLOCK / TIMER</b>	<b>&lt; PRIMARY MODULE &gt;</b>
<b>DRIVER INFORMATION MODULE &amp; PANEL LAMP (DIM)</b>		
28F	ENGINE AFTERTREATMENT	FLX FLM STL FLD CAS
285	CIRCUIT PROTECTION	STL
286	WIRING - ENGINE	FLM
287	WIRING - CAB OVERHEAD	FLX
288	CHASSIS WIRING	FLX CAS
320	MAIN CAB HARNESS (MCH)	FLX FLM STL FLD CAS
321	WIRING-CAB,FRTWALL, EXTERIOR	CAS
34B	WIRING - TRANSMISSION	FLM
656	SWITCH PANEL & WRG DOOR	FLX STL
<b>81B</b>	<b>WIRING - DASH PANEL LAMP</b>	<b>&lt; PRIMARY MODULE &gt;</b>
811	DRIVER INFORMATION MODULE	CAS
732	INSTRUMENT PANEL-DRIVER	STL
<b>&lt; RELATED ELECTRICAL COMPONENT MODULES &gt;</b>		
733	SOFTWARE-INST. CONTROL PANEL	
735	INSTRUMENT PANEL-ACCESSORY	
814	INFORMATION CENTER-OFFICER	
867	GAUGE-TEMP,OUTSIDE AIR	
869	GAUGE-MISCELLANEOUS	

MODULE	DESCRIPTION	MODELS
<b>DATA LINK &amp; DIAGNOSTICS (J1587 &amp; J1939)</b>		
160	DIAGNOSTICS	< PRIMARY MODULE >
286	ENGINE HARNESS	FLX FLM STL FLD CAS
287	WIRING - CAB OVERHEAD	FLX CAS
288	CHASSIS WIRING	FLM
320	MAIN CAB HARNESS (MCH)	FLX FLM STL CAS
<b>DOOR LOCKS, KEYLESS &amp; SECURITY</b>		
286	ENGINE HARNESS	FLM
320	MAIN CAB HARNESS (MCH)	CAS
656	SWITCH PANEL & WIRING DOOR	FLX FLM STL
787	SECURITY / DOOR LOCKS, WIRING	< PRIMARY MODULE >
< RELATED ELECTRICAL COMPONENT MODULES >		
655	LATCH-DOOR	
<b>DATA RECORDING &amp; LOGGING</b>		
813	PERFORMANCE MONITOR - VEHICLE	< PRIMARY MODULE >
81A	PERFORMANCE MONITOR-ENGINE	
837	SOFTWARE-DATA LOGGER UNIT	
<b>ENGINE, ETHER STARTING AID</b>		
154	ETHER STARTING AID	< PRIMARY MODULE >
286	ENGINE HARNESS	CAS
321	WIRING-CAB,FRTWALL, EXTERIOR	CAS
<b>ENGINE, AUTOMATIC START / STOP SYSTEM</b>		
158	STARTER CONTROL- AUTO (OPT IDLE)	< PRIMARY MODULE >
288	CHASSIS WIRING	CAS
321	WIRING-CAB,FRTWALL, EXTERIOR	CAS
<b>ENGINE BRAKE, RETARDER</b>		
129	WIRING - RETARDER CONTROLS	< PRIMARY MODULE >
286	ENGINE HARNESS	FLX STL FLD
320	MAIN CAB HARNESS (MCH)	STL
288	CHASSIS WIRING	FLM
< RELATED ELECTRICAL COMPONENT MODULES >		
128	RETARDER-ENG/TRANS/DRIVELINE	
12B	RETARDER CONTROLS-PNEUMATIC	
23W	RETARDER-TRANSMISSION	
<b>ENGINE, BLOCK &amp; OIL PAN HEATER</b>		
138	ENGINE COOLANT PREHEATER	
140	RECEPTACLE & MTG-ENG HEATER	< PRIMARY MODULE >
166	OIL PAN HEATER	
<b>ENGINE, CRUISE CONTROL, SPEED</b>		
149	CRUISE CONTROL - VEHICLE SPEED	< PRIMARY MODULE >
283	WIRING-ENGINE CONTROLS/INDIC	FLX STL FLD
286	ENGINE HARNESS	FLX STL FLD
320	MAIN CAB HARNESS (MCH)	FLX STL FLD CAS

MODULE	DESCRIPTION	MODELS
<b>ENGINE CONTROLS, ELECTRONIC ENGINE</b>		
283	WIRING - ENGINE CONTROLS / INDIC	< PRIMARY MODULE >
285	CIRCUIT PROTECTION	STL
286	ENGINE HARNESS	FLX FLM STL FLD CAS
288	CHASSIS WIRING	FLM
28F	ENGINE AFTERTREATMENT	FLX FLM STL FLD CAS
320	MAIN CAB HARNESS (MCH)	FLM FLD CAS
321	WIRING-CAB,FRTWALL, EXTERIOR	CAS
< RELATED ELECTRICAL COMPONENT MODULES >		
106	ACCELERATOR CONTROL-FOOT	
10J	ENGINE-ELECTRONICS (FBE)	
150	GOVERNOR-VEHICLE SPEED	
164	ENGINE CONTROL UNIT (ECU)	
810	GAUGE-SPEEDOMETER	
812	GAUGE-TACHOMETER	
817	SENDER/DRIVE-SPEED	
819	SENDER/DRIVE-RPM	
830	GAUGE-HOURLMETER	
<b>ENGINE FAN</b>		
276	WIRING - FAN CTRLS,ENG / RAD	< PRIMARY MODULE >
283	WIRING-ENGINE CONTROLS/INDIC	FLX
286	ENGINE HARNESS	FLX STL FLD CAS
288	CHASSIS WIRING	FLM
320	MAIN CAB HARNESS (MCH)	FLX FLD
321	WIRING-CAB,FRTWALL, EXTERIOR	FLX FLM
< RELATED ELECTRICAL COMPONENT MODULES >		
273	FAN DRIVE-ENGINE	
27F	FAN CONTROLS-PNEUMATIC	
<b>ENGINE, GRID HEATER, AIR INTAKE</b>		
132	AIR INTAKE WARMER	< PRIMARY MODULE >
321	WIRING-CAB,FRTWALL, EXTERIOR	CAS
<b>ENGINE SHUTDOWN &amp; WARNING</b>		
152	ENG-PROT / ALARM / SHDN,WIRING,IND	< PRIMARY MODULE >
285	CIRCUIT PROTECTION	STL
286	ENGINE HARNESS	FLX FLM STL FLD
320	MAIN CAB HARNESS (MCH)	FLM FLD
321	WIRING-CAB,FRTWALL, EXTERIOR	FLX FLM
< RELATED ELECTRICAL COMPONENT MODULES >		
165	REGULATOR-ENGINE OIL LEVEL	
842	GAUGE-TURBO AIR PRESSURE	
852	GAUGE-PRESSURE,ENGINE OIL	
854	GAUGE-TEMPERATURE,ENGINE OIL	
856	GAUGE-TEMPERATURE,ENGINE,COOL	
858	GAUGE-PYROMETER	
<b>ENGINE AIR RESTRICTION INDICATOR</b>		
199	WIRING - AIR INTAKE / CLEANER	< PRIMARY MODULE >
321	WIRING-CAB,FRTWALL, EXTERIOR	CAS
< RELATED ELECTRICAL COMPONENT MODULES >		
188	AIR INTK PIPING-INLET TO CLNR	
198	GAUGE/IND AIR CLNR RESTRICTION	
<b>ENGINE RPM CONTROL, REMOTE</b>		
148	ACCEL CNTL - HAND / GOV ENG RPM	< PRIMARY MODULE >
163	WIRING-ENGINE OPT/RPM CONTROLS	
87J	WIRING-ENG CTRL PK BRK INTRLK	
87K	WIRING-ENG CTRL NEUT INTRLK	
87L	REMOTE ENGINE CONTROL-ENABLE	

MODULE	DESCRIPTION	MODELS
<b>ENTRY, VEHICLE ACCESS</b>		
320	MAIN CAB HARNESS (MCH)	CAS
656	SWITCH PANEL & WRG DOOR - STL	
67E	WIRING - ENTRY / ACCESS / STEP	< PRIMARY MODULE >
< RELATED ELECTRICAL COMPONENT MODULES >		
597	ACCESS-RAMP/LIFT	
67B	STEP-CHASSIS MTD	
67C	STEP-ARTICULATED,MECHANISM	
67F	STEP-ARTIC.,ELECT./SOFTWARE	
<b>FIFTH WHEEL CONTROL &amp; INDICATORS</b>		
87E	WIRING - FIFTHWHEEL	< PRIMARY MODULE >
320	MAIN CAB HARNESS (MCH)	CAS
< RELATED ELECTRICAL COMPONENT MODULES >		
890	AIR PIPING-FIFTH WHEEL,CAB	
912	AIR PIPING-FIFTH WHEEL,CHASSIS	
<b>FUEL HEATER &amp; WATER IN FUEL LIGHT</b>		
127	WIRING - FUEL WATER SEPARATOR	< PRIMARY MODULE >
285	CIRCUIT PROTECTION	STL
288	CHASSIS WIRING	FLX FLD CAS
< RELATED ELECTRICAL COMPONENT MODULES >		
110	FILTER-FUEL	
122	FILTER/SEPARATOR-FUEL,ADDL	
220	FUEL HEATER	
<b>FUEL INSTRUMENTATION &amp; WARNING</b>		
285	CIRCUIT PROTECTION	STL
286	ENGINE WIRING	FLD
288	CHASSIS WIRING	FLX STL CAS
320	MAIN CAB HARNESS (MCH)	FLX FLM STL FLD CAS
321	WIRING-CAB,FRTWALL, EXTERIOR	FLM
847	SENDER / WIRING - FUEL LEVEL	< PRIMARY MODULE >
< RELATED ELECTRICAL COMPONENT MODULES >		
112	PUMP-PRIMER,FUEL SYSTEM	
80F	FUEL LEVEL OPTIMIZATION	
841	GAUGE-FUEL VACUUM	
844	GAUGE-FUEL LEVEL	
845	GAUGE-FUEL FLOW	
<b>GROUND SYSTEM</b>		
280	ELEC SYSTEM VOLTAGE / SCHEMATIC	< PRIMARY MODULE >
28B	BATTERY GROUND-RAIL TO RAIL	
<b>HEATER, VENTILATION AND AIR CONDITIONING (HVAC)</b>		
70B	WIRING - HVAC,MAIN	< PRIMARY MODULE >
285	CIRCUIT PROTECTION	STL
286	ENGINE HARNESS	STL CAS
288	CHASSIS WIRING	FLX FLM STL FLD
320	MAIN CAB HARNESS (MCH)	FLX FLM STL FLD CAS
321	WIRING-CAB,FRTWALL, EXTERIOR	FLX CAS
< RELATED ELECTRICAL COMPONENT MODULES >		
130	COMPRESSOR-REFRIGERANT	
700	HVAC UNIT-MAIN	
702	A/C PLUMBING-MAIN	
703	HVAC CONTROL-MAIN	
70A	HVAC-MAIN,ECU/SOFTWARE	

MODULE	DESCRIPTION	MODELS			
<b>HEATER VENTILATION AND AIR COND - AUXILIARY (AUX HVAC)</b>					
142	WIRING-COOLANT HEATER,GAS/DSL				
287	WIRING - CAB OVERHEAD	FLX	FLD	CAS	
288	CHASSIS WIRING				CAS
320	MAIN CAB HARNESS (MCH)				CAS
321	WIRING-CAB,FRTWALL, EXTERIOR	FLX	FLM		CAS
<b>70C</b>	<b>WIRING - HVAC,AUX</b>	<b>&lt; PRIMARY MODULE &gt;</b>			
<b>&lt; RELATED ELECTRICAL COMPONENT MODULES &gt;</b>					
141	COOLANT HEATER-GAS/DSL FIRED				
685	A/C PLUMBING-AUXILIARY				
689	HVAC UNIT-AUXILIARY				
70D	HVAC-AUX,ECU/SOFTWARE				
723	HVAC CONTROL-AUXILIARY				
<b>HORN, AUDIBLE WARNING</b>					
<b>264</b>	<b>CONTR / WRG - HORN / AUDIBLE WARN</b>	<b>&lt; PRIMARY MODULE &gt;</b>			
285	CIRCUIT PROTECTION		STL		
288	CHASSIS WIRING				CAS
320	MAIN CAB HARNESS (MCH)	FLX	FLM	STL	CAS
321	WIRING-CAB,FRTWALL, EXTERIOR	FLX	FLM		CAS
<b>&lt; RELATED ELECTRICAL COMPONENT MODULES &gt;</b>					
275	WARNING-AUDIBLE,SIREN/SPEAKER				
27A	WARNING-AUDIBLE,BELL				
27E	WARNING-SIREN,ELECT/MECH				
726	HORN-ELECTRIC				
727	HORN-AIR				
<b>LIGHTING, ADVERTISING, TOP OF CAB</b>					
<b>319</b>	<b>LAMP - ADVERTISING</b>	<b>&lt; PRIMARY MODULE &gt;</b>			
320	MAIN CAB HARNESS (MCH)				CAS
<b>&lt; RELATED ELECTRICAL COMPONENT MODULES &gt;</b>					
777	AERO DEVICE-CAB FRONT				
<b>LIGHTING, BACKUP LAMP &amp; ALARM</b>					
28A	WIRING CHASSIS REAR		FLM	STL	CAS
285	CIRCUIT PROTECTION			STL	
286	ENGINE HARNESS	FLX		STL	FLD CAS
288	CHASSIS WIRING	FLX		STL	FLD CAS
320	MAIN CAB HARNESS (MCH)	FLX		STL	
321	WIRING-CAB,FRTWALL, EXTERIOR	FLX			
<b>35H</b>	<b>SWITCH / WIRING,BACKUP / REVERSE</b>	<b>&lt; PRIMARY MODULE &gt;</b>			
<b>&lt; RELATED ELECTRICAL COMPONENT MODULES &gt;</b>					
721	ALARM-BACKUP/REVERSE MOTION				
<b>LIGHTING, DOME, READING, FORWARD CAB</b>					
287	WIRING - CAB OVERHEAD	FLX	FLM	STL	FLD
320	MAIN CAB HARNESS (MCH)	FLX	FLM	STL	FLD CAS
<b>32B</b>	<b>WIRING - LAMP,INT,FWD</b>	<b>&lt; PRIMARY MODULE &gt;</b>			
656	SWITCH PANEL & DOOR WRG			STL	
<b>&lt; RELATED ELECTRICAL COMPONENT MODULES &gt;</b>					
324	LAMP-INTERIOR,COURTESY CAB MTD				

MODULE	DESCRIPTION	MODELS			
<b>LIGHTING, EMERGENCY DEVICE, VISUAL</b>					
287	WIRING OVERHEAD				FLD
320	MAIN CAB HARNESS (MCH)				CAS
<b>33A</b>	<b>WIRING / SW-LIGHT / VISUAL WARNING</b>	<b>&lt; PRIMARY MODULE &gt;</b>			
<b>&lt; RELATED ELECTRICAL COMPONENT MODULES &gt;</b>					
271	WARNING-VISUAL,ROOF/TOP FRONT				
27B	WARNING-VISUAL,SIDE TOP LH				
27C	WARNING-VISUAL,SIDE TOP RH				
27G	WARNING-VISUAL,ROOF/TOP REAR				
317	LAMP-CONSPICUITY				
31E	POWER SUPPLY-EXTERIOR LIGHTS				
31G	WARNING-VISUAL,CAB FNT CNTR				
31P	LAMP-COMMAND/BEACON, ROOF MTD				
327	LAMP-OTHER				
<b>LIGHTING, HEAD / TAIL LAMP AND DAYTIME RUN LIGHTS (DRL)</b>					
28A	WIRING CHASSIS REAR		FLM	STL	CAS
285	CIRCUIT PROTECTION			STL	
288	CHASSIS WIRING	FLX	FLM	STL	FLD CAS
30J	WIRING-TAIL LIGHT DEVICE				CAS
<b>311</b>	<b>DRL / HEADLAMP - CONTROLS / WIRING</b>	<b>&lt; PRIMARY MODULE &gt;</b>			
312	LAMP-HEADLIGHT			STL	
320	MAIN CAB HARNESS	FLX	FLM	STL	FLD CAS
321	WIRING-CAB,FRTWALL, EXTERIOR				CAS
<b>&lt; RELATED ELECTRICAL COMPONENT MODULES &gt;</b>					
27D	FLASHER-HEADLAMP				
31F	SOFTWARE-DAYTIME RUNNING LIGHT				
<b>LIGHTING, EXTERIOR MARKER</b>					
285	CIRCUIT PROTECTION - STL			STL	
287	WIRING - CAB OVERHEAD	FLX	FLM	STL	FLD
288	CHASSIS HARNESS		FLM	STL	FLD CAS
<b>30A</b>	<b>WIRING - MARKER LAMP</b>	<b>&lt; PRIMARY MODULE &gt;</b>			
320	MAIN CAB HARNESS (MCH)	FLX		STL	FLD
321	WIRING-CAB,FRTWALL, EXTERIOR				CAS
656	SWITCH PANEL & DOOR WRG		FLM	STL	
<b>&lt; RELATED ELECTRICAL COMPONENT MODULES &gt;</b>					
302	LAMP-MARKER, CAB MOUNTED				
304	SWITCH-MARKER/PANEL/HEADLAMP				
305	LAMP-ACCENT, CAB/SLEEPER				
31A	WARNING-VISUAL BUMPER END				
31H	LAMP-MARKER, SLEEPER MOUNTED				
328	LAMP-PARKING				
<b>LIGHTING, ROAD &amp; FOG LAMP</b>					
288	CHASSIS WIRING	FLX			FLD CAS
<b>313</b>	<b>WIRING - ROAD / FOG LAMP</b>	<b>&lt; PRIMARY MODULE &gt;</b>			
320	MAIN CAB HARNESS (MCH)	FLX			
<b>&lt; RELATED ELECTRICAL COMPONENT MODULES &gt;</b>					
314	LAMP-ROAD/FOG				
315	LAMP-FOG				
<b>LIGHTING, SLEEPER</b>					
287	WIRING - CAB OVERHEAD	FLX			FLD CAS
320	MAIN CAB HARNESS (MCH)				CAS
<b>32C</b>	<b>WIRING - LAMP,INT,SLPR / BAGGAGE</b>	<b>&lt; PRIMARY MODULE &gt;</b>			
325	LAMP-INTERIOR,SLPR	FLX			FLD CAS
<b>&lt; RELATED ELECTRICAL COMPONENT MODULES &gt;</b>					
322	LAMP-BAGGAGE COMPARTMENT				

MODULE	DESCRIPTION	MODELS			
<b>LIGHTING, SPOT</b>					
287	WIRING OVERHEAD				FLD
<b>30G</b>	<b>WIRING - LAMP,SPOT / FLOOD CAB MTD</b>	<b>&lt; PRIMARY MODULE &gt;</b>			
<b>&lt; RELATED ELECTRICAL COMPONENT MODULES &gt;</b>					
316	LAMP-FLOOD/SPOT,CAB MTD				
<b>LIGHTING, TURN LAMP &amp; ALARM</b>					
30J	WIRING-TAIL LIGHT DEVICE				FLD CAS
54C	WIRING-STEERING WHEEL				CAS
28A	WIRING CHASSIS REAR		FLM	STL	CAS
285	CIRCUIT PROTECTION			STL	
287	WIRING - CAB OVERHEAD		FLX		
288	CHASSIS WIRING	FLX	FLM		FLD CAS
301	WIRING-TURN/STOP/TAILLAMPS				<b>&lt; PRIMARY MODULE &gt;</b>
312	LAMP-HEADLIGHT			STL	
320	MAIN CAB HARNESS (MCH)				CAS
321	WIRING-CAB,FRTWALL, EXTERIOR	FLX		STL	CAS
<b>&lt; RELATED ELECTRICAL COMPONENT MODULES &gt;</b>					
298	TURN SIGNAL FLASHER				
299	TURN SIGNAL/DIMMER SWITCH				
300	LAMP-TURN SIGNAL,CAB MTD EXT				
30E	LAMP-TURN SIGNAL,SIDE BODY MTD				
<b>LIGHTING, UTILITY &amp; WORK</b>					
287	WIRING - CAB OVERHEAD	FLX			CAS
288	CHASSIS WIRING	FLX			FLD CAS
<b>31J</b>	<b>WIRING - LAMP,UTILITY</b>	<b>&lt; PRIMARY MODULE &gt;</b>			
320	MAIN CAB HARNESS (MCH)	FLX			CAS
321	WIRING-CAB,FRTWALL, EXTERIOR				CAS
<b>&lt; RELATED ELECTRICAL COMPONENT MODULES &gt;</b>					
318	LAMP-EXTERIOR,UTILITY				
31K	LAMP-UTILITY, MIRROR ARM MTD				
469	LAMP-WORK,CAB MTD EXT				
<b>MIRROR HEAT &amp; POWER CONTROL</b>					
320	MAIN CAB HARNESS (MCH)	FLX		STL	CAS
656	SWITCH PANEL & WIRING DOOR	FLX	FLM	STL	
<b>74E</b>	<b>WIRING - MIRROR</b>	<b>&lt; PRIMARY MODULE &gt;</b>			
<b>&lt; RELATED ELECTRICAL COMPONENT MODULES &gt;</b>					
744	MIRROR-PRIMARY				
<b>MULTIPLEX CONTROLS &amp; MODULE (MUX)</b>					
287	WIRING-CAB, OVERHEAD & REAR/SLPR				CAS
320	MAIN CAB HARNESS (MCH)				CAS
<b>860</b>	<b>WRG - CNTR DASH &amp; MULTIPLEX</b>	<b>&lt; PRIMARY MODULE &gt;</b>			
<b>&lt; RELATED ELECTRICAL COMPONENT MODULES &gt;</b>					
32A	CAB MULTIPLEXING UNIT				
32K	CHASSIS MULTIPLEXING UNIT				
32L	BODY MULTIPLEXING UNIT				
835	MULTIPLEXING INTERFACE UNIT				
<b>OPTIONAL AIR CONTROLS AND WIRING</b>					
320	MAIN CAB HARNESS (MCH)				CAS
<b>87G</b>	<b>WIRING / SWITCH - CHASS,OPT,AIR PP</b>	<b>&lt; PRIMARY MODULE &gt;</b>			
<b>&lt; RELATED ELECTRICAL COMPONENT MODULES &gt;</b>					
873	AIR PP & CONT-OPTIONAL,CAB				
919	AIR PIPING-OPTIONAL,CHASSIS				

MODULE	DESCRIPTION	MODELS
<b>OPTIONAL, SWITCH &amp; WIRING</b>		
288	CHASSIS WIRING	FLX FLD CAS
320	MAIN CAB HARNESS (MCH)	CAS
329	WIRING / SWITCH - DASH,OPTIONAL	< PRIMARY MODULE >
<b>PHONE</b>		
705	CAB-MISC CUSTOM REQUIREMENTS	
789	TELEPHONE	< PRIMARY MODULE >
<b>POWER DISTRIBUTION SYSTEM</b>		
285	CIRCUIT PROTECTION	< PRIMARY MODULE >
288	CHASSIS HARNESS	FLM
320	MAIN CAB HARNESS (MCH)	FLX FLM STL FLD CAS
321	WIRING-CAB,FRTWALL, EXTERIOR	FLM
< RELATED ELECTRICAL COMPONENT MODULES >		
307	CONVERTOR-VOLTAGE	
335	ELEC POWER DIST MNGR-CHASSIS	
338	SOFTWARE-CHASSIS CONTROL UNIT	
339	ELEC LOAD MNGR/INTERLOCK-CAB	
<b>POWER INVERTERS - ALTERNATING CURRENT (AC)</b>		
337	WIRING - AC 120V CAB & AC OUTLET	< PRIMARY MODULE >
287	WIRING-CAB, OVERHEAD & REAR/SLPR	CAS
< RELATED ELECTRICAL COMPONENT MODULES >		
336	INVERTER,AC/DC,MTG & DC WIRING	
274	RECEPT,AC INPUT,INVRT/CHARGER	
33C	AC 120V CHS WRG & 12V PWR CBLS	
<b>POWER OUTLET &amp; RECEPTACLE (CIGAR LIGHTERS)</b>		
284	PWR OUTLET / WIRING,SLPR / CAB,INT	< PRIMARY MODULE >
287	WIRING - CAB OVERHEAD	FLX FLD CAS
320	MAIN CAB HARNESS (MCH)	FLX FLM STL FLD CAS
< RELATED ELECTRICAL COMPONENT MODULES >		
717	MICROWAVE OVEN	
719	REFRIGERATOR	
785	ASH TRAY/CIGAR LIGHTER	
<b>POWER TAKEOFF CONTROLS</b>		
286	ENGINE HARNESS	
321	WIRING-CAB,FRTWALL, EXTERIOR	CAS
885	WIRING / PTO CONTROLS	< PRIMARY MODULE >
<b>SEAT POWER</b>		
74F	WIRING - SEAT	< PRIMARY MODULE >
287	WIRING-CAB, OVERHEAD & REAR/SLPR	CAS
320	MAIN CAB HARNESS (MCH)	CAS
< RELATED ELECTRICAL COMPONENT MODULES >		
756	SEAT-DRIVER	
75D	SEAT HARDWARE DRVR/PSNGR	
760	SEAT-PASSENGER,FRONT	
762	SEAT-PASSENGER,REAR	
763	SEAT BELT	
76A	SEAT-PASSENGER,REAR,ADDITIONAL	
<b>SUSPENSION (SPNSN)</b>		
87D	WIRING - SUSPENSION, REAR	< PRIMARY MODULE >
320	MAIN CAB HARNESS (MCH)	FLX CAS
< RELATED ELECTRICAL COMPONENT MODULES >		
888	AIR PIPING-REAR SUSP,CAB	
909	AIR PIPING-FRONT SUSP,CHASSIS	
910	AIR PIPING-REAR SUSP,CHASSIS	

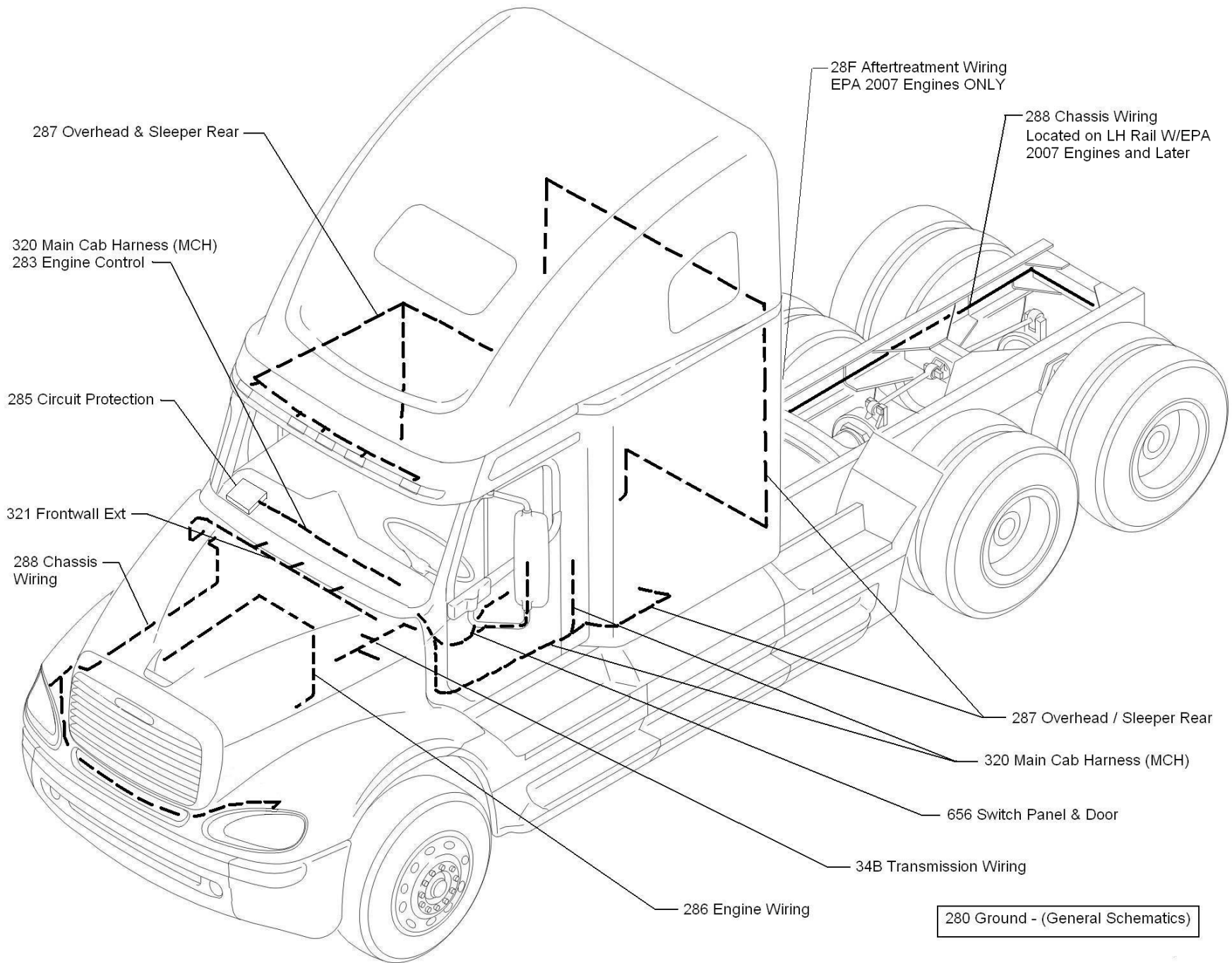
MODULE	DESCRIPTION	MODELS
<b>SECONDARY RESTRAINT SYSTEM (SRS)</b>		
287	WIRING-CAB, OVERHEAD & REAR/SLPR	CAS
320	MAIN CAB HARNESS (MCH)	CAS
725	RESTRAINT SYSTEM - SUPPLEMENTAL	< PRIMARY MODULE >
<b>STARTER - DISABLE CONTROLS</b>		
153	WIRING - ADD'L STARTER INTERLOCK	< PRIMARY MODULE >
156	WIRING, STARTER	CAS
320	MAIN CAB HARNESS (MCH)	FLX FLM STL
321	WIRING-CAB,FRTWALL, EXTERIOR	FLX FLM
< RELATED ELECTRICAL COMPONENT MODULES >		
146	AIR TANK-AIR STARTER	
155	STARTING MOTOR-AIR/ELECTRIC	
157	STARTER CONTROL-MANUAL, REMOTE	
162	ENGINE STOP CONTROL	
<b>STEERING CONTROL</b>		
54C	WIRING - STEERING WHEEL	< PRIMARY MODULE >
301	WIRING-TURN/STOP/TAILLAMPS	CAS
320	MAIN CAB HARNESS (MCH)	CAS
< RELATED ELECTRICAL COMPONENT MODULES >		
539	STEERING PUMP	
<b>TILT SYSTEM - CAB / HOOD LIFT</b>		
670	TILT MECHANISM	< PRIMARY MODULE >
< RELATED ELECTRICAL COMPONENT MODULES >		
541	JACK-LEVELING/PROVISION, REAR	
<b>TIRE INFLATION</b>		
49D	WIRING - TIRE PRESS SENSOR	< PRIMARY MODULE >
< RELATED ELECTRICAL COMPONENT MODULES >		
489	TIRE PRESSURE CONTROL/SENSING	
<b>TRACKING AND GUIDANCE SYSTEM (TGS)</b>		
287	WIRING-CAB, OVERHEAD & REAR/SLPR	CAS
288	CHASSIS WIRING	CAS
320	MAIN CAB HARNESS (MCH)	FLX CAS
786	POSITIONING & LOCATION SYSTEMS	< PRIMARY MODULE >
< RELATED ELECTRICAL COMPONENT MODULES >		
78A	POSITION/COMMUNICATION ACCY'S	
<b>TRANSMISSION AUXILIARY CONTROLS</b>		
320	MAIN CAB HARNESS (MCH)	CAS
34C	WIRING - TRANSMISSION,AUX / ACC	< PRIMARY MODULE >
< RELATED ELECTRICAL COMPONENT MODULES >		
355	TRANSMISSION-AUX SHIFT CONTROL	
866	AIR PIPING-AUX TRANS,CAB	
908	AIR PIPING-AUX TRANS,CHASSIS	
<b>TRANSMISSION WIRING / CONTROL</b>		
285	CIRCUIT PROTECTION	STL
286	ENGINE HARNESS	FLM FLD CAS
320	MAIN CAB HARNESS (MCH)	CAS
34B	WIRING - TRANSMISSION	< PRIMARY MODULE >
< RELATED ELECTRICAL COMPONENT MODULES >		
342	TRANSMISSION-MAIN	
343	SOFTWARE-TRANS CONTROL UNIT	
345	TRANS-MAIN SHIFT,MECHANISM	
34A	TRANS-MAIN SHIFT,SELECTOR	
34G	TRANSMISSION-CONTROLS (FBE)	
884	AIR PIPING-TRANSMISSION,CAB	
906	AIR PIPING-TRANSMISSION,CHAS	

MODULE	DESCRIPTION	MODELS
<b>TRANSMISSION WARNING</b>		
286	ENGINE HARNESS	FLX FLD CAS
320	MAIN CAB HARNESS (MCH) - M2	FLM
321	WIRING-CAB,FRTWALL, EXTERIOR	FLX
863	WIRING / SENDER-TRANS TEMP	< PRIMARY MODULE >
< RELATED ELECTRICAL COMPONENT MODULES >		
862	GAUGE-PRESSURE,TRANS OIL	
864	GAUGE-TEMPERATURE,TRANS OIL	
<b>TRAILER CONNECTION WIRING</b>		
28A	WIRING-CHAS,REAR (M2 / STL / CAS ONLY)	CAS
285	CIRCUIT PROTECTION	STL
287	WIRING-CAB, OVERHEAD & REAR/SLPR	CAS
296	WIRING - PRIMARY RECEPTACLE	< PRIMARY MODULE >
297	PRIMARY RECEPTACLE	FLX FLM STL FLD CAS
320	MAIN CAB HARNESS (MCH)	FLX STL FLD
< RELATED ELECTRICAL COMPONENT MODULES >		
173	TRAILER HEATING PROVISION	
30K	HIGH CURRENT TRAILER/BODY RCPT	
30L	HI-CURRENT TRAILER/BODY CABLE	
303	ADDITIONAL PRIMARY RECEPTACLE	
310	PRIMARY TRAILER CABLE	
49C	TRAILER COMMUNICATIONS(FMVSS)	
<b>VEHICLE INTERFACE WIRING (BODY)</b>		
28A	WIRING - CHAS,REAR	CAS
353	WIRING - VEHICLE,BODY BUILDER	< PRIMARY MODULE >
<b>VIDEO &amp; TELEVISION</b>		
737	TELEVISION ANTENNA / PROVISION	< PRIMARY MODULE >
< RELATED ELECTRICAL COMPONENT MODULES >		
74C	TELEVISION/MONITOR	
<b>WINDOW - POWER</b>		
320	MAIN CAB HARNESS (MCH)	CAS
66A	WIRING - WINDOW	< PRIMARY MODULE >
656	SWITCH PANEL & WRG DOOR	FLX FLM STL
< RELATED ELECTRICAL COMPONENT MODULES >		
654	WINDOW REGULATOR-DOOR	
<b>WINDSHIELD WIPER</b>		
285	CIRCUIT PROTECTION	STL
288	CHASSIS WIRING	STL
320	MAIN CAB HARNESS (MCH)	FLX STL
321	WIRING-CAB,FRTWALL, EXTERIOR	FLX FLM CAS
66B	WIRING - WASH / WIPE	< PRIMARY MODULE >
< RELATED ELECTRICAL COMPONENT MODULES >		
659	WINDSHIELD/HEADLAMP WASHER	
660	WINDSHIELD WIPER	

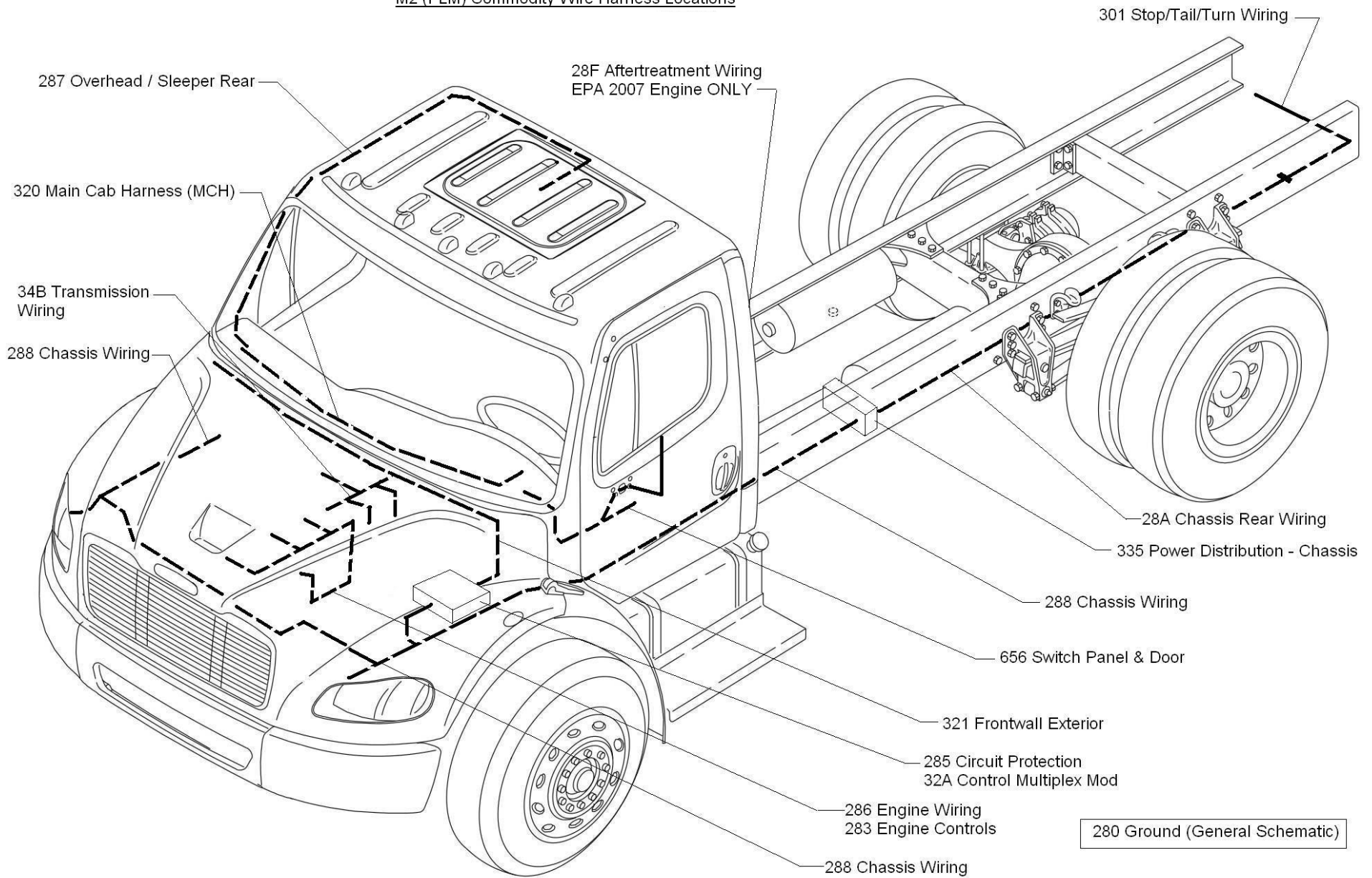




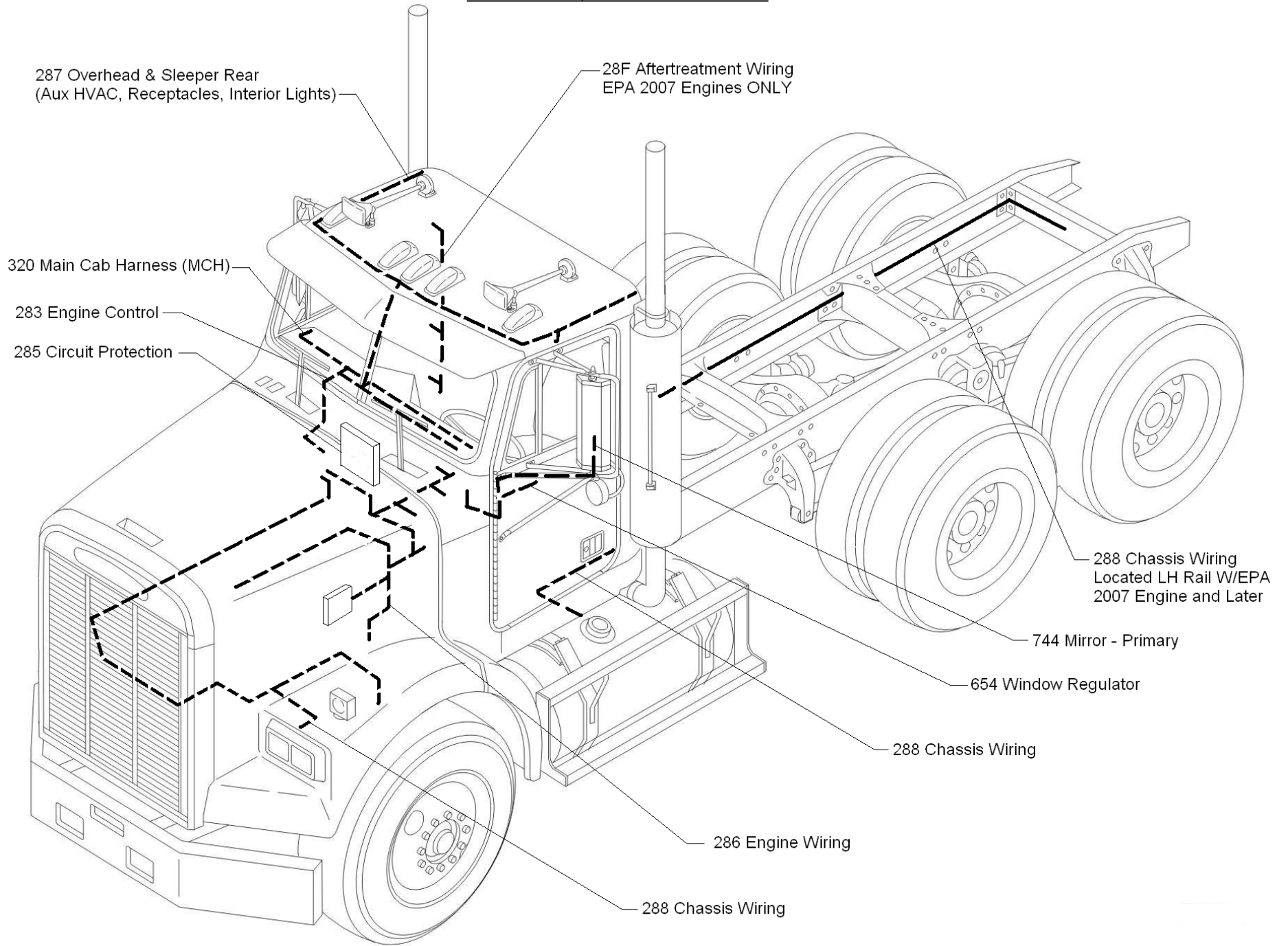
Columbia / Century (FLX) Commodity Wire Harness Locations



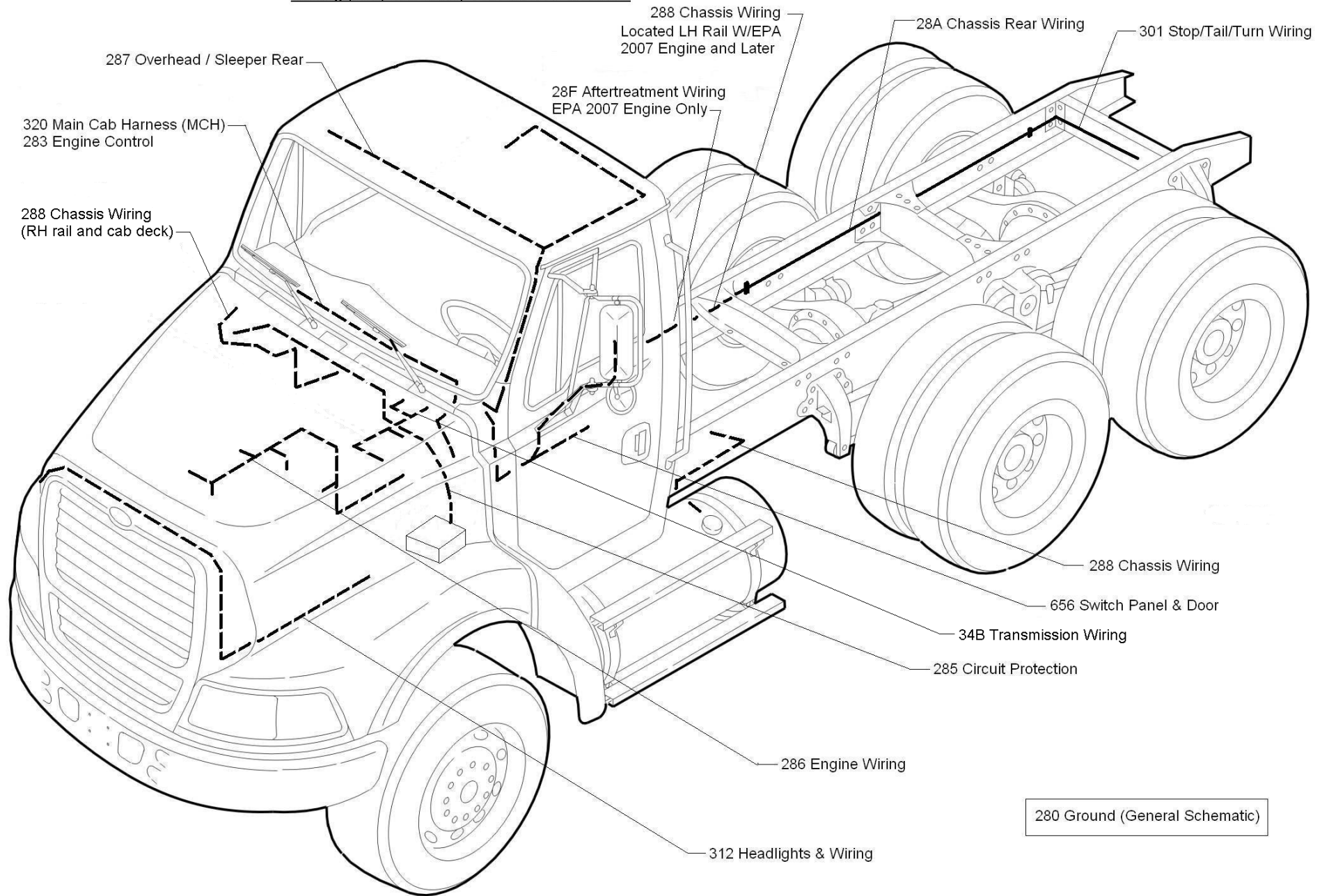
M2 (FLM) Commodity Wire Harness Locations



FLD Commodity Wire Harness Locations



Sterling (STL) Commodity Wire Harness Locations



280 Ground (General Schematic)