

Date: September 20, 2018

**Upper Marker Light Gasket Retrofit**

**Description:**

This procedure outlines the steps to improve upper-marker light weather sealing by replacing the existing well-nuts and installing new gaskets. This is applicable to all MCI coaches using the 07-07-6107 and 07-07-6108 marker lights.



***Read this entire procedure before beginning work.***

***Use Safe Shop Practices at All Times.***

***To avoid personal injury:***

- a. Proper Personal Protective Equipment (PPE) must be worn. Safety glasses and protective gloves are required for working with DEF Fluid.***
- b. Turn the main battery disconnect switch to the OFF position.***
- c. Ensure that both the front and the rear wheels are chocked.***
- d. Positioning the ENGINE RUN and ENGINE START switches on the engine compartment remote control box to the OFF position.***
- e. Allow enough time for components to cool down prior to working in the engine compartment.***

**Material requirements:**

Service Kit **T07-3611** contains the following parts:

ITEM	PART NO.	QTY	U/M	DESCRIPTION
1	07-07-1920	14	EA	GASKET – MARKER LIGHT
2	19-01-1635	28	EA	SCREW – PANHEAD, 10-32x1.5, STAINLESS
3	19-03-0602	28	EA	NUT-WELL,BRASS INSERT,#10-32 UNF
4	23-02-0027	1	TUBE	THREAD LOCK-LOCTITE 242

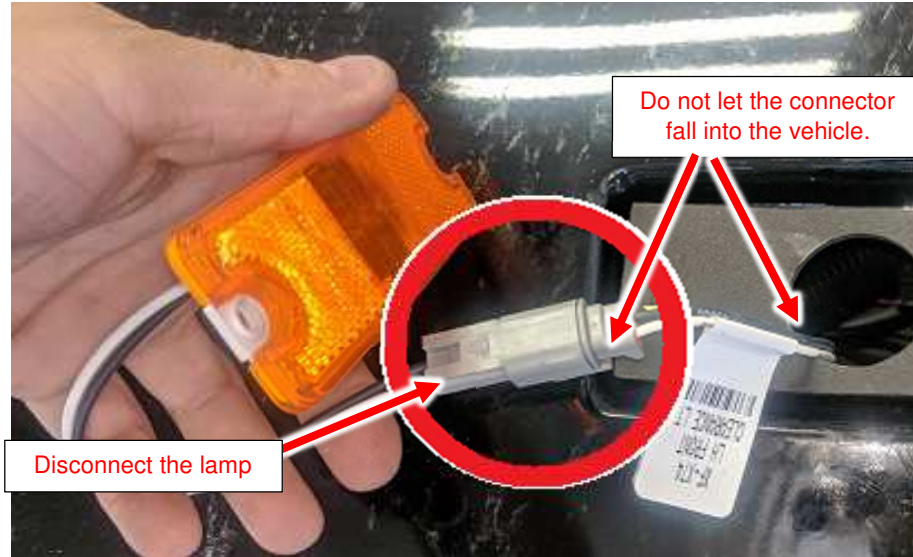


**1.0 Removing the front marker lights, gaskets, and wellnuts**

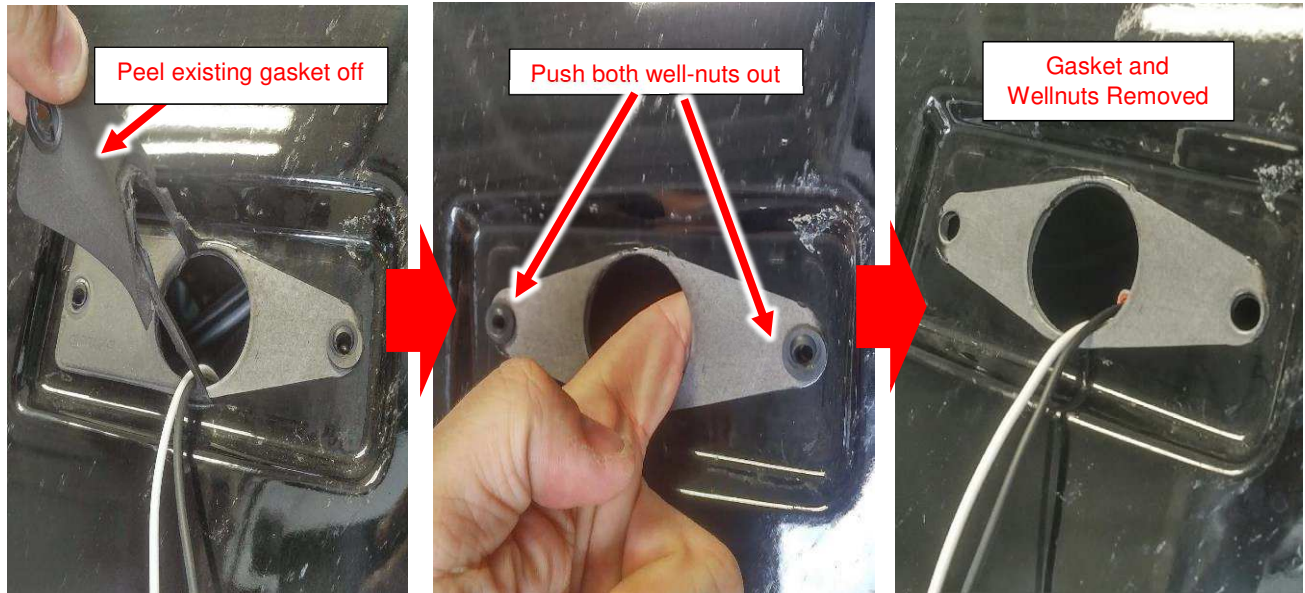
Remove the 7 front marker lights from the front of the vehicle by removing and discard the two 8-32 screws on each light.



Disconnect the marker light. Do not let the Deutsch connector fall into the vehicle.

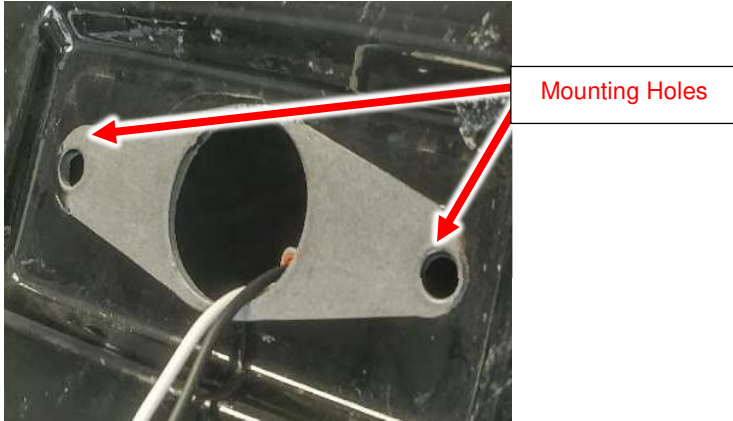


Peel off the existing gaskets, then push the existing wellnuts out of the holes. Discard old gaskets and wellnuts.



## 2.0 Installing the well-nuts

Before installing well nuts, enlarge the mounting holes using 3/8 reamer.



Using warm water and soap, or a suitable adhesive remover, clean the marker light area completely.



Apply 2 drops of Loctite, 23-02-0027, to the well nuts, 19-03-0502, and insert them in the mounting holes. Firmly press the well nuts into position into the mounting holes and let the adhesive dry for 1 minute.

### 3.0 Applying the new gasket

Peel the protective backing off the 07-07-1920 gasket to expose the adhesive and apply the gasket to the fiberglass, using the screw-holes as a guide.



### 4.0 Install the marker light

Reconnect the Deutsch connector to the marker light. Apply Loctite, 23-02-0027, to the 19-01-1635 screws and fasten to marker light back to the coach. Do not exceed 5 Inch-Pounds torque



## 5.0 Updating the Rear Marker Lights

Repeat sections 1 through 4 for rear marker lights



**End of procedure**