

Classification:

Reference:

Date:

EM16-006b

ITB17-004b

August 7, 2019

ACCESSORY DRIVE BELT NOISY OR HAS COME OFF

This bulletin has been amended. See **AMENDMENT HISTORY** on the last page.
Please discard previous versions of this bulletin.

APPLIED VEHICLES: 2016-2017 Q50 (V37)
2017 Q60 (V37)

APPLIED VIN AND DATE: 2016 Q50 (V37) **All**
2017 Q50 (V37)
Built before:

RWD	{	JN1EV7AP(*)HM 731871 / September 7, 2016
		JN1FV7AP(*)HM 850227 / September 7, 2016
AWD	{	JN1EV7AR(*)HM 832718 / September 7, 2016
		JN1FV7AR(*)HM 870451 / September 7, 2016

2017 Q60 (V37)

Built before:

RWD	{	JN1EV7EK(*)HM 360095 / May 27, 2016
		JN1FV7EK(*)HM 610102 / May 27, 2016
AWD	{	JN1EV7EL(*)HM 550025 / May 27, 2016
		JN1FV7EL(*)HM 700062 / May 27, 2016

APPLIED ENGINE: VR30DDTT (V6 Twin Turbo Engine)

NOTE: Bulletin does not apply to Hybrid vehicles

IF YOU CONFIRM

The accessory drive belt is noisy,

OR

The accessory drive belt has come OFF of the idler pulley.

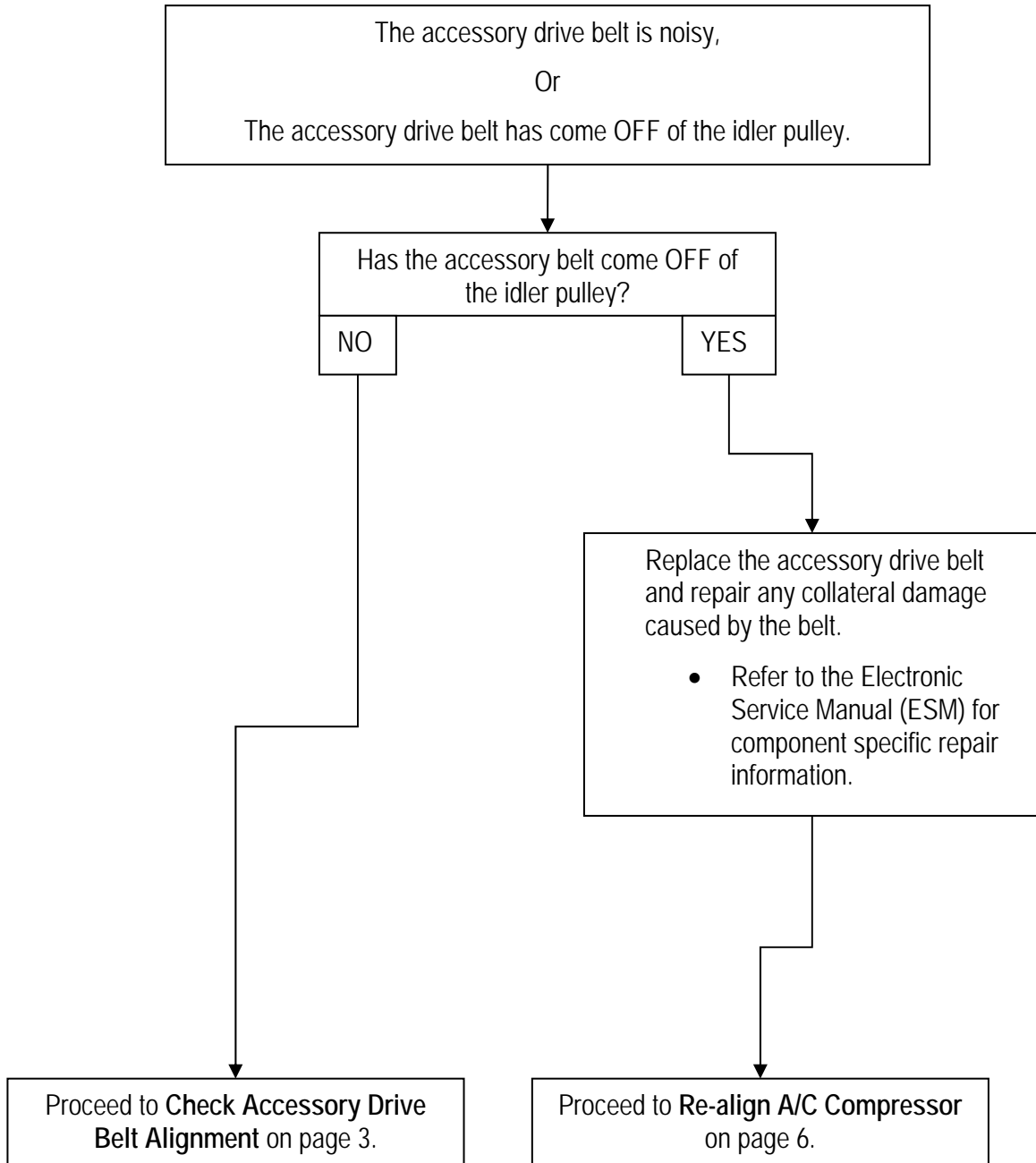
ACTION

- If the accessory drive belt is currently only noisy, check its alignment with the procedure starting on page 3.
- If the accessory drive belt has come OFF of the idler pulley, first replace the accessory drive belt and repair any collateral damage caused by the belt, and then proceed to **Re-align A/C Compressor** on page 6.

IMPORTANT: The purpose of **ACTION** (above) is to give you a quick idea of the work you will be performing. You **MUST** closely follow the entire **SERVICE PROCEDURE** as it contains information that is essential to successfully completing this repair.

Infiniti Bulletins are intended for use by qualified technicians, not 'do-it-yourselfers'. Qualified technicians are properly trained individuals who have the equipment, tools, safety instruction, and know-how to do a job properly and safely. **NOTE:** If you believe that a described condition may apply to a particular vehicle, **DO NOT** assume that it does. See your Infiniti retailer to determine if this applies to your vehicle.

Flow Chart



SERVICE PROCEDURE

Check Accessory Drive Belt Alignment

1. Access the idler pulley by hand.

NOTE: The idler pulley can be reached from the driver's side of the engine compartment between the radiator and the front of the engine as shown in Figure 1 and Figure 2.

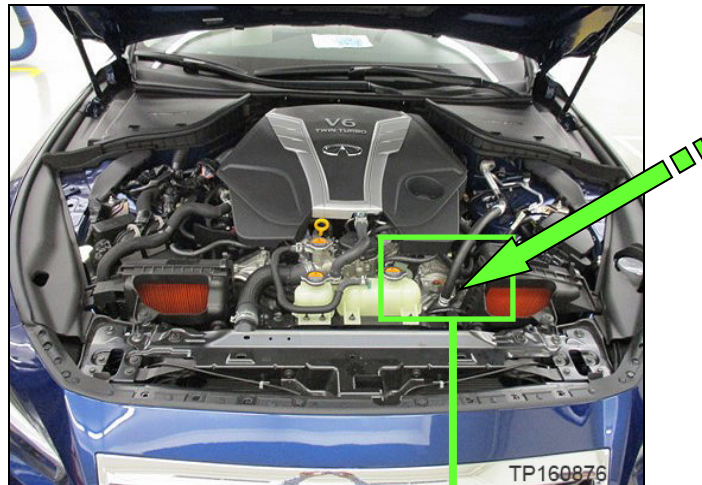


Figure 1

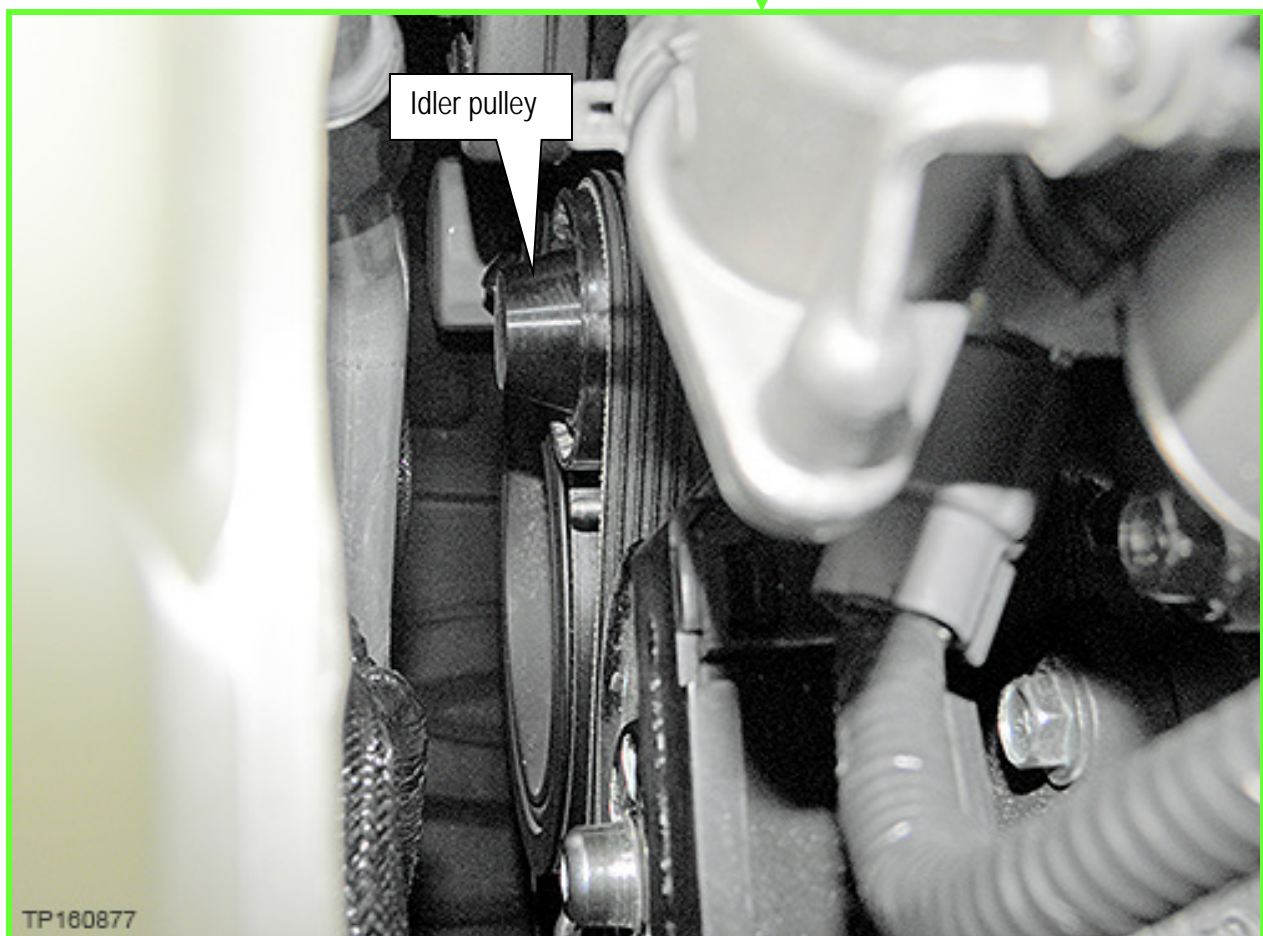


Figure 2

2. Measure the gap from the front edge of the belt to the front edge of the idler pulley shown in Figure 3 as follows:

a. Cut out a 1 inch square piece of paper.

NOTE: A sticky note can be used.

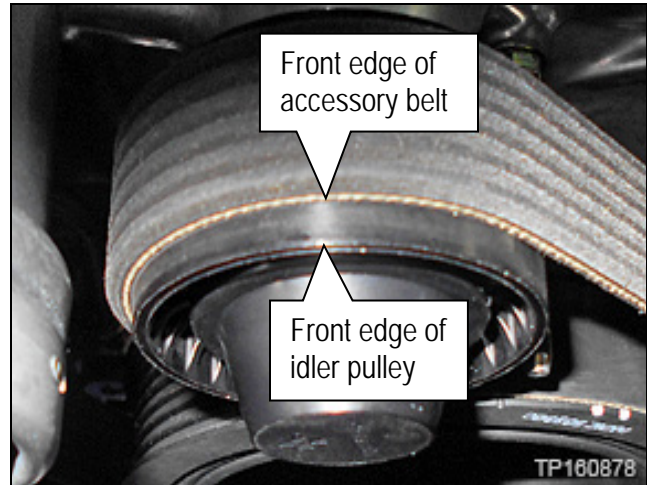


Figure 3

b. Align the paper to the front edge of belt (Figure 3 and Figure 4).

c. While holding the paper against the edge of the belt, fold the paper over the edge of the idler pulley to create a crease in the paper.

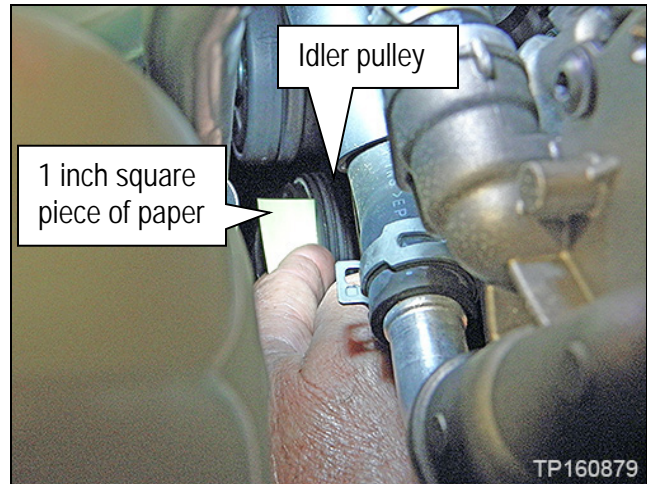


Figure 4

d. Remove the paper and measure the distance between the crease and the edge of the paper that was in contact with the belt.

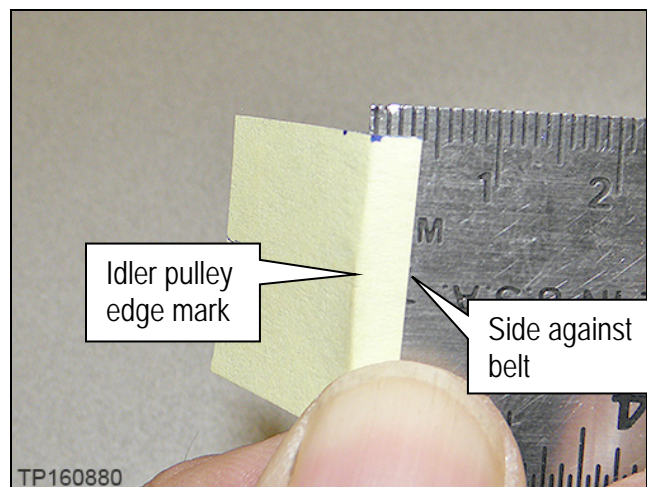


Figure 5

3. Is the distance of the belt 3.5 mm or more from the front edge of the pulley?

YES: No adjustment is required at this time.

- Refer to the ESM for further diagnostic information: **ENGINE > ENGINE MECHANICAL > VR30DDTT.**

NO: Proceed to **Re-align A/C Compressor.**

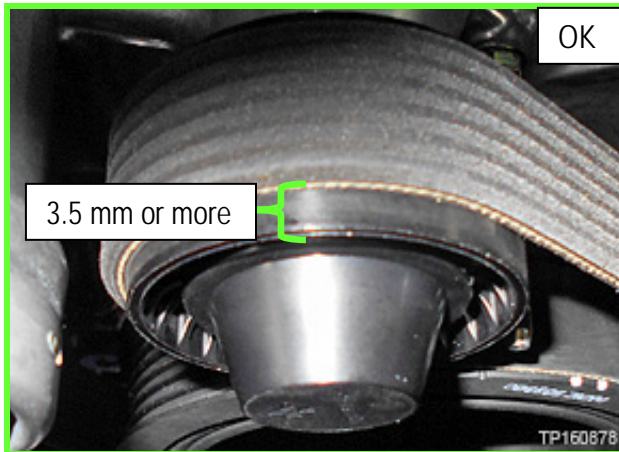


Figure 6

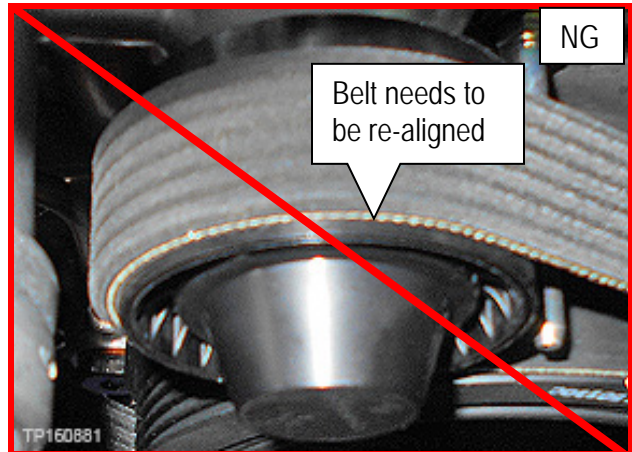


Figure 7

Re-align A/C Compressor

1. Remove the air duct (inlet) shown in Figure 8.
2. Remove the air cleaner body (bank 2).
3. Remove the air cleaner cover (bank 2).
4. Remove the air duct (bank 2).

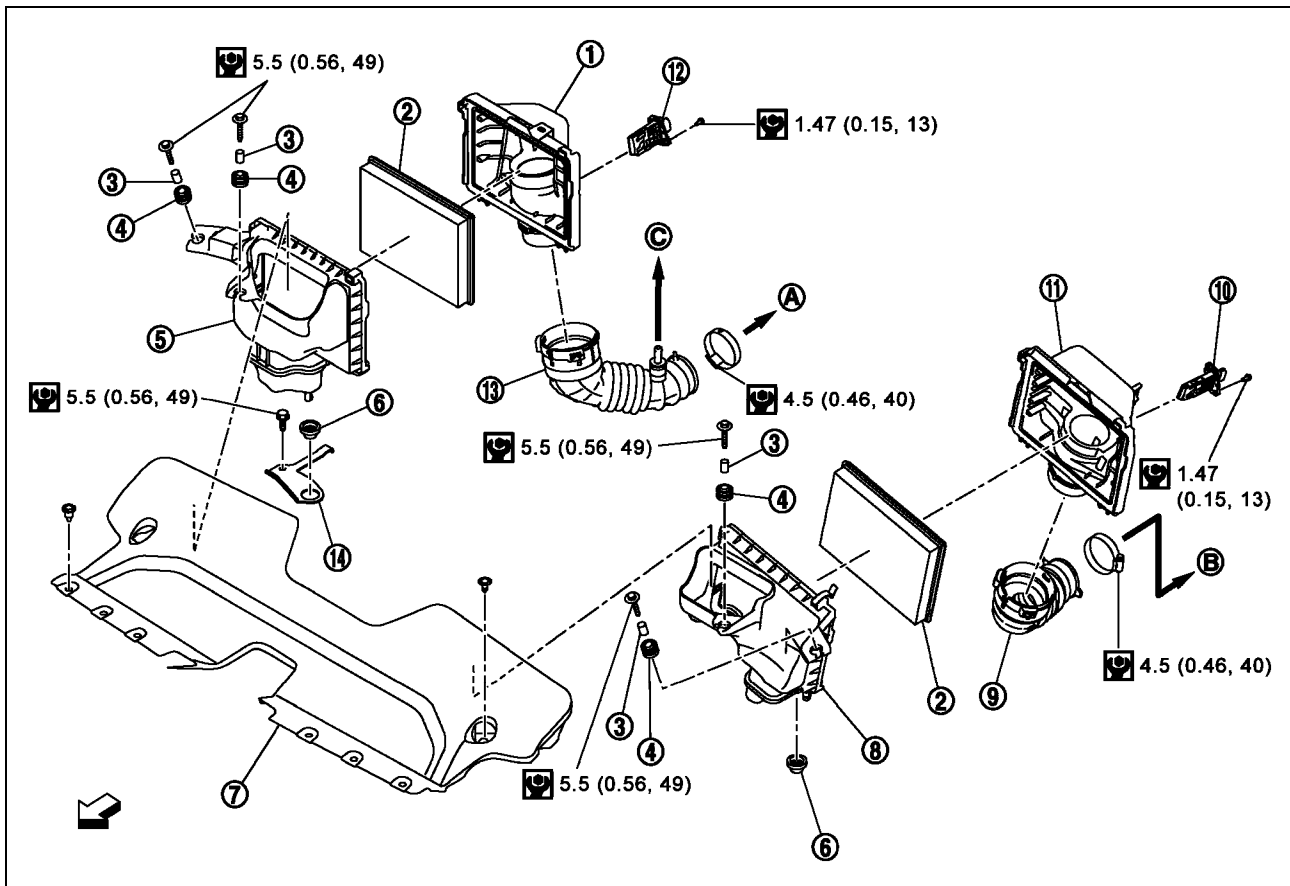


Figure 8

- | | | |
|---------------------------------|------------------------------|--|
| ① Air cleaner cover (bank 1) | ② Air cleaner filter | ③ Spacer |
| ④ Grommet | ⑤ Air cleaner body (bank 1) | ⑥ Grommet |
| ⑦ Air duct (inlet) | ⑧ Air cleaner body (bank 2) | ⑨ Air duct (bank 2) |
| ⑩ Mass air flow sensor (bank 2) | ⑪ Air cleaner cover (bank 2) | ⑫ Mass air flow sensor (with intake air temperature sensor) (bank 1) |
| ⑬ Air duct (bank 1) | ⑭ Bracket | |
| Ⓐ To turbocharger (bank 1) | Ⓑ To turbocharger (bank 2) | Ⓒ To rocker cover (bank 1) |
| ⇐ : Engine front | | |
| Ⓜ : N-m (kg-m, in-lb) | | |

5. Remove the accessory drive belt.
 - Refer to the ESM: **ENGINE > ENGINE MECHANICAL > VR30DDTT > PERIODIC MAINTENANCE > DRIVE BELT > Removal and Installation.**
6. Recover/recycle the A/C refrigerant.
 - Refer to the ESM: **VENTILATION, HEATER & AIR CONDITIONER > HEATER & AIR CONDITIONING SYSTEM > VR30DDTT > BASIC INSPECTION > REFRIGERANT > Recycle Refrigerant.**

7. Remove the nut holding the high pressure hose to the A/C compressor, and then disconnect the high pressure hose.

NOTE: Do not remove the low pressure hose.

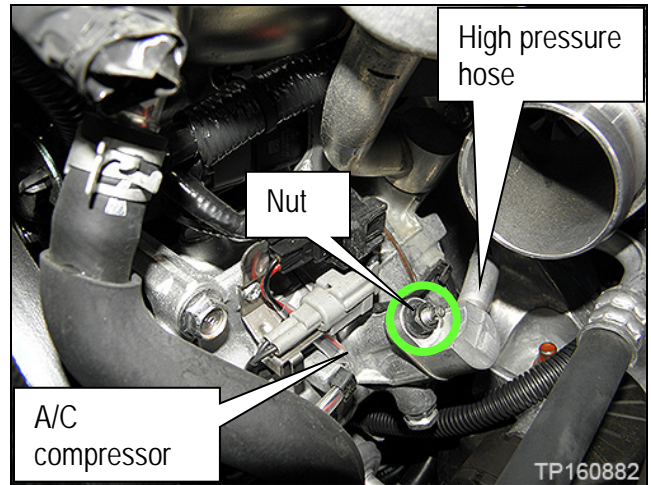


Figure 9

8. Loosen the front two (2) A/C compressor mounting bolts shown in Figure 10.
 - Do not remove the A/C compressor mounting bolts when loosening.
9. Loosen the single rear A/C compressor mounting bolt shown in Figure 10.

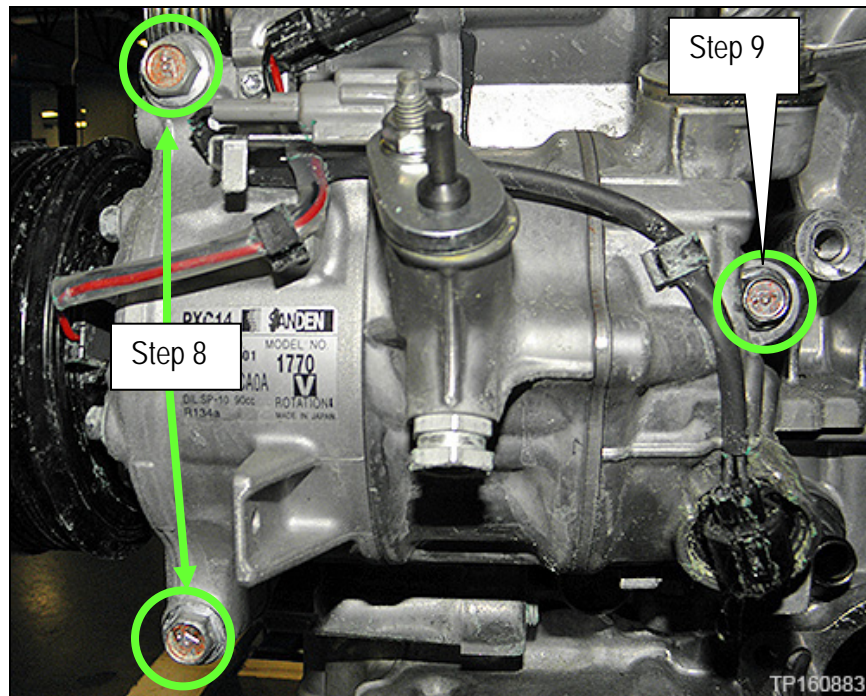


Figure 10

10. Move the A/C compressor up and down to free it from the engine assembly.
 11. Push the A/C compressor toward the rear of the vehicle.
 12. While holding the A/C compressor toward the rear of the vehicle, tighten the A/C compressor mounting bolts in the order shown in Figure 11 to 5 N•m, (0.51 kg-m, **44 in-lb**).
- NOTE:** Take care not to move the A/C compressor until the final torquing of the bolts in the next step.
13. Torque the A/C compressor mounting bolts to 30.9 N•m, (3.2 kg-m, **23 ft-lb**) in the order shown in Figure 11.

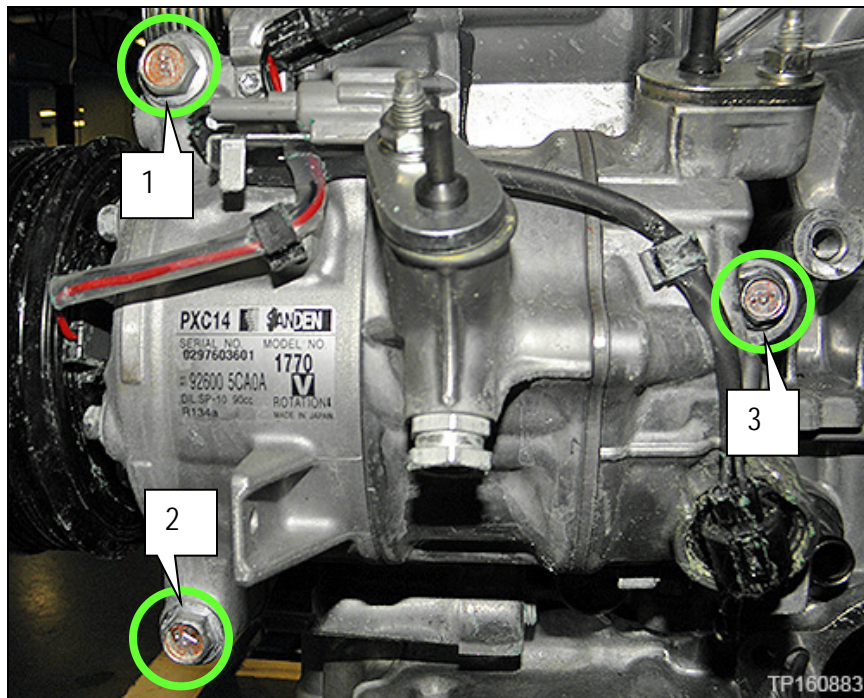


Figure 11

14. Replace the high pressure hose o-ring, and apply refrigerant oil to the o-ring before reinstalling the high pressure hose.
15. Reassemble the vehicle in the reverse order of disassembly.
16. Recharge the A/C refrigerant.
 - Refer to the **ESM: VENTILATION, HEATER & AIR CONDITIONER > HEATER & AIR CONDITIONING SYSTEM > VR30DDTT > BASIC INSPECTION > REFRIGERANT > Charge Refrigerant.**

PARTS INFORMATION

DESCRIPTION	PART NUMBER	QUANTITY
Accessory Drive Belt	11720-5CA0A	1, If Needed
O-ring	92472-N8210	1, If Needed
S-R134A PAG Lube (Refrigerant Oil)	999MP-ND12P (1)	Shop supply

(1) Order through the Infiniti Maintenance Advantage program: Phone: 877-463-4621; website order via link on dealer portal www.NNAnet.com and click on the "Maintenance Advantage" link.

CLAIMS INFORMATION

DESCRIPTION	PFP	OP CODE	SYM	DIA	FRT
Align A/C compressor (Includes A/C Evacuate and Recharge)	(1)	TX48AA	ZL	32	1.8

(1) Refer to the Electronic Parts Catalog (EPC) and use the appropriate A/C Compressor part number (92600-XXXXX) as the primary failed part.

AMENDMENT HISTORY

PUBLISHED DATE	REFERENCE	DESCRIPTION
February 3, 2017	ITB17-004	Original bulletin published.
March 28, 2018	ITB17-004a	APPLIED VEHICLES and APPLIED VIN AND DATE sections revised.
August 7, 2019	ITB17-004b	Page 8 and PARTS INFORMATION section revised.

