



Baggage Door Latch Replacement

Bulletin Type:	SRP
Bulletin #(s):	19-025
Job Code(s):	**
Flat Rate(s):	**
<i>** If affected unit has warranty remaining, submit your claim following the normal process.</i>	

Publication Date:	August 2019
Make(s):	Jayco Motorized & Entegra
Model(s):	Various
Model Year(s):	2018 & 2019

Incident:	Baggage doors were noticed to be leaking on certain units due to a wrong O-ring being installed in the baggage door handle.
Affected Units:	Jayco Motorized & Entegra units
Parts:	<u>Baggage Door Latch:</u> (select appropriate latch depending what is currently on the unit) <ul style="list-style-type: none"> • Locking = 0700305 • Non-locking = 0410955
Misc. Tools & Supplies:	<ul style="list-style-type: none"> • Screwgun with #2 square drive bit • Caulk gun • 1 tube - MH 2300 clear sealant (or equivalent)

REPLACING THE DOOR LATCH

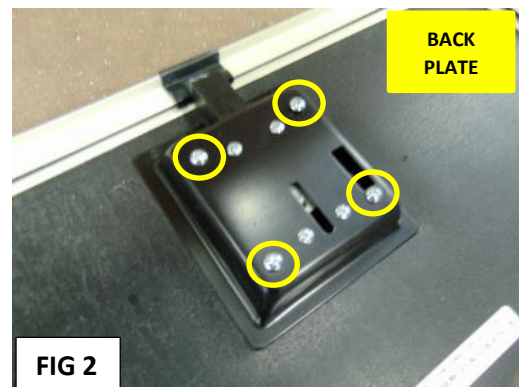
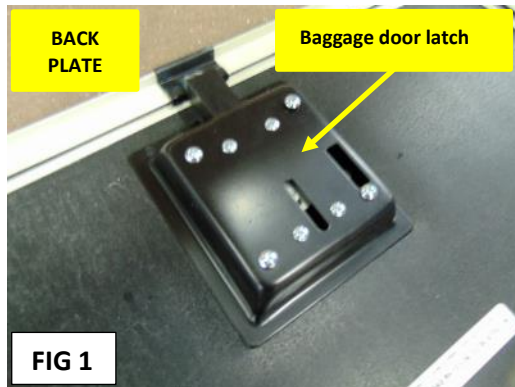


FIG 1:

- If the baggage door latch is leaking water, the latch must be replaced.

FIG 2:

- Remove the 4 screws (circled) from the back plate in the photo. (save the screws)
- The other 4 screws hold the plunger to the back plate and must remain in place.

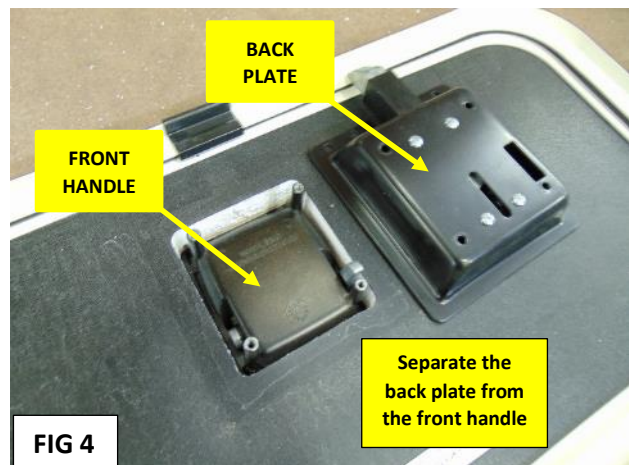
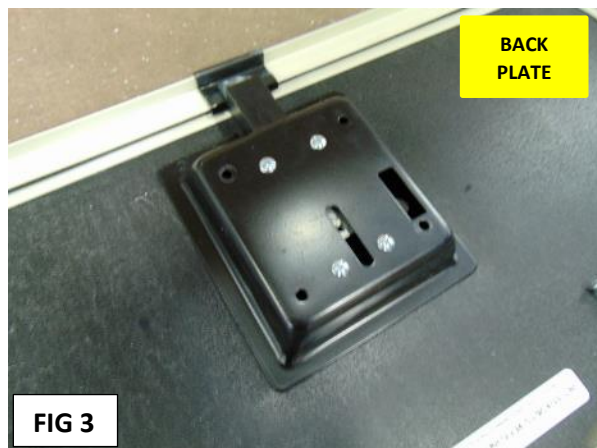


FIG 3:

- 4 screws removed from the back plate.

FIG 4:

- With the screws removed, the back plate can be separated from the front handle.



FIG 5:

- The old front handle will have a gasket that is too small and thin and does not seal properly.

FIG 6:

- The replacement front handle has a gasket that is thicker and fits around the latch better.

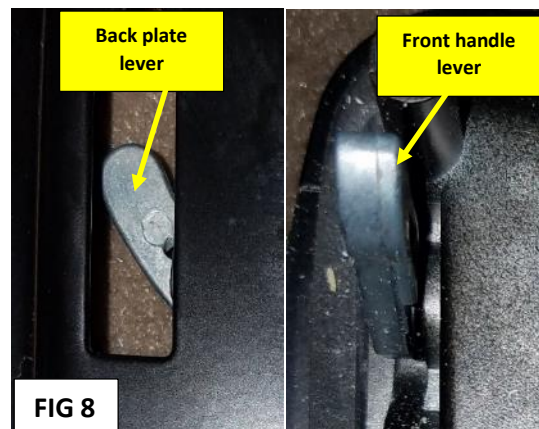


FIG 7:

- Install the new front handle back in place in the door opening.
- Place the rear latch on the back side of the door.
- Note the circled area in the photo. Both latch levers should appear in the rectangular opening (shown).
- When you place the rear latch on top of the front latch, **MAKE SURE THE REAR ROUNDED LEVER IS NOT SITTING ON TOP OF THE FRONT HANDLE VERTICAL LEVER. LEVERS MUST BE INSTALLED PROPERLY OR WHEN THE SCREWS ARE TIGHTENED, THE REAR ROUNDED LEVER WILL BREAK OFF.**

FIG 8:

- This photo shows a close up of both latch levers.
- Rear latch lever is rounded.
- Front handle lever sticks up vertically and when the latch is operated, pushes the rounded rear latch lever.

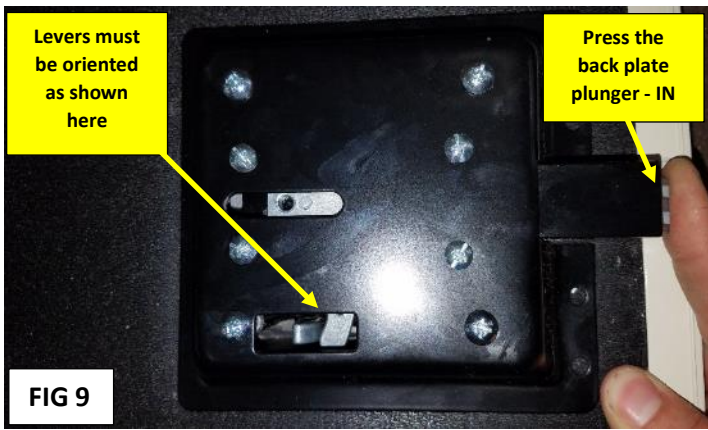


FIG 9:

- Set latch levers in the correct position **BEFORE INSTALLING THE SCREWS!**
- Press **IN** on the back plate plunger, which will move the rounded rear lever to the right (in this photo)
- This allows clearance for the front handle lever to fit in front of the back plate lever.
- The levers **must be positioned as shown**, to prevent breaking off the back plate rounded lever.
- **Hold the latch assembly in this position while re-installing the 4 screws removed previously.**
- Tighten the 4 screws, then you can release the back plate plunger.
- Now, re-check all 4 screws because at least one will loosen up as the other screws were tightened.
- All 4 screws should be snug.

Check the operation of the baggage latch to make sure it operates correctly.

Jayco's sole obligation under our limited warranty is to repair or replace defective materials and/or workmanship deemed our responsibility as determined by Jayco at our sole discretion. Jayco reserves the right to use new and/or remanufactured parts or materials of similar quality to complete any work, and to make parts and/or design changes as appropriate without notice to anyone. Jayco designs and/or materials changes are done without obligation to incorporate such changes in previously manufactured product. Jayco makes every reasonable effort to ensure field remedies will not adversely affect performance and/or safety of the unit. This field remedy is not intended to extend to future performance of this RV, or any of its materials, components or parts beyond the standard warranty period. The RV owner's obligation to notify Jayco, or one of its independent, authorized dealers, of a claimed defect does not modify any obligation placed on the RV owner to contact Jayco directly when attempting to pursue remedies under state or federal law.

903 South Main Street • P.O. Box 460 • Middlebury, IN 46540 • (574) 825-0608 • Fax: (574) 825-0572