

Parts Information

Sports Car

13

D450

Parts Withdrawal - Sport Car Control Unit

Replace all previous bulletins bearing this number.

Attention: **Porsche Parts Manager/Parts Personnel**

Porsche Cars North America requests return of the following part(s) to PCNA if in stock at your dealership:

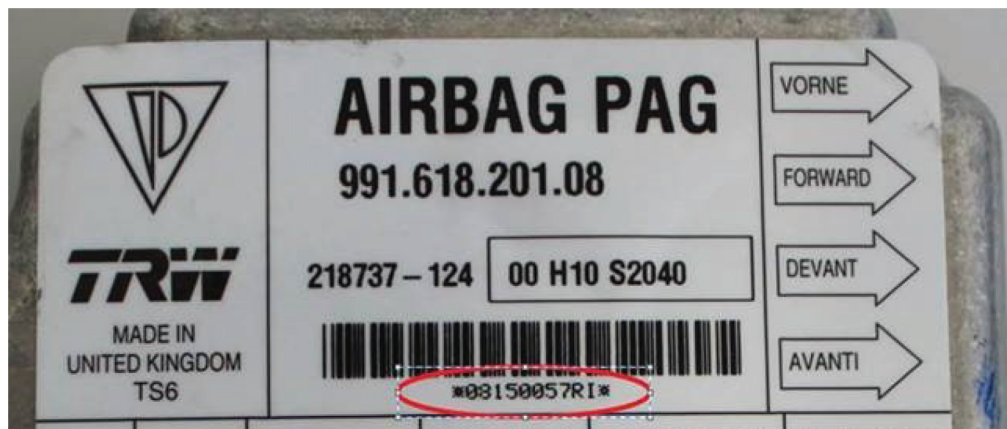
Return Part Number

99161820108

Please Order Part Number Below

No supersession

See attached spreadsheet for affected serial numbers:



To avoid restocking charges and receive full credit, follow these steps:

- Please enter a return in POLARIS by Friday, August 9th 2019.
- Please use GR13D450 as a purchase order number.
- Parts returned to PCNA without a return delivery note will be sent back to the dealer at dealer's expense.
- Return requests received after the specified return date will not be processed and the parts will not be accepted for return. Parts will be coded non-returnable from that date on.
- These parts must be physically returned by close of business day on Friday, August 16th, 2019, to your facing PDC.

Thank you for your cooperation in this matter.

Porsche Cars North America

Dr. Ing. h.c. F. Porsche AG is the owner of numerous trademarks, both registered and unregistered, including without limitation the Porsche Crest®, Porsche®, Boxster®, Carrera®, Cayenne® Cayman®, Macan®, Panamera®, Speedster®, Spyder®, Tiptronic®, VarioCam®, PCM®, PDK®, 911®, RS®, 4S®, 718®, 918 Spyder®, FOUR UNCOMPROMISED®, and the model numbers and distinctive shapes of the Porsche automobiles such as, the federally registered 911 and Boxster automobiles. The third party trademarks contained herein are the properties of their respective owners. Porsche Cars North America, Inc. believes the specifications to be correct at the time of printing. However, specifications, standard equipment and options are subject to change without notice. Some options may be unavailable when a car is built. Some vehicles may be shown with non-U.S. equipment. Please ask your authorized Porsche dealer for advice concerning the current availability of options and verify the optional equipment that you ordered. Porsche recommends seat belt usage and observance of traffic laws at all times.