



**SERVICE  
CENTER  
INFORMATION**

**SCI19-01C**

DATE :	September 2019	SECTION : 00 GENERAL
SUBJECT :	MCM MODULE P/N 23499009 BENCH PROGRAMMING PROCEDURE FOR THE ELECTRIC FAN DRIVE CONVERSION KIT	

Revision: C

Addition of the following special tools: harness #0610162 & power supply #0610163 09-11-19

**DESCRIPTION**

The intent of this procedure is to guide you through the steps required to program a MCM especially for the control of the electric fan drive as required for conversion kit of instruction sheets IS-19900, IS-19901, IS-19910, IS-19912.

BEFORE PROGRAMMING	AFTER PROGRAMMING
MCM (non-programmed) part #23499009	MCM programmed part #23499009-EFD

**MATERIAL NEEDED**

Part No.	Description	Qty
23499009	MCM (non-programmed)	1
7770985	DECAL	1

**SPECIAL TOOLS AND OTHER EQUIPMENT NEEDED**

1. A laptop with the following software installed: MAIDCOM.
2. A network access
3. Interface harness #0610162
4. Special Prevost cable #066009
5. 24V-3A Power supply #0610163
6. Electric fan control program: body software *FB06100118F01*

## **INSTALLING MAIDCOM**

1. Install Maidcom on your computer. Get Maidcom on Volvo network using the link below:

[https://secure.volvo.com/VBCRemote/files\\_Applications/MAIDCOM%20Standalone/Setup.Maidcom2\\_7\\_5591\\_Standalone.zip](https://secure.volvo.com/VBCRemote/files_Applications/MAIDCOM%20Standalone/Setup.Maidcom2_7_5591_Standalone.zip)

2. You will end up here. Type your username and current password.

**VOLVO** Operated by: VOLVO IT

**Welcome to Volvo Network**

[https://secure.volvo.com/VBCRemote/files\\_Applications/MAIDCOM%20Plugin%20for%20TechTool%20version%202.04%20and%20up/Setup.Maidcom2\\_7\\_5591\\_Standalone.zip](https://secure.volvo.com/VBCRemote/files_Applications/MAIDCOM%20Plugin%20for%20TechTool%20version%202.04%20and%20up/Setup.Maidcom2_7_5591_Standalone.zip)

Username	Password
ub60392	*****

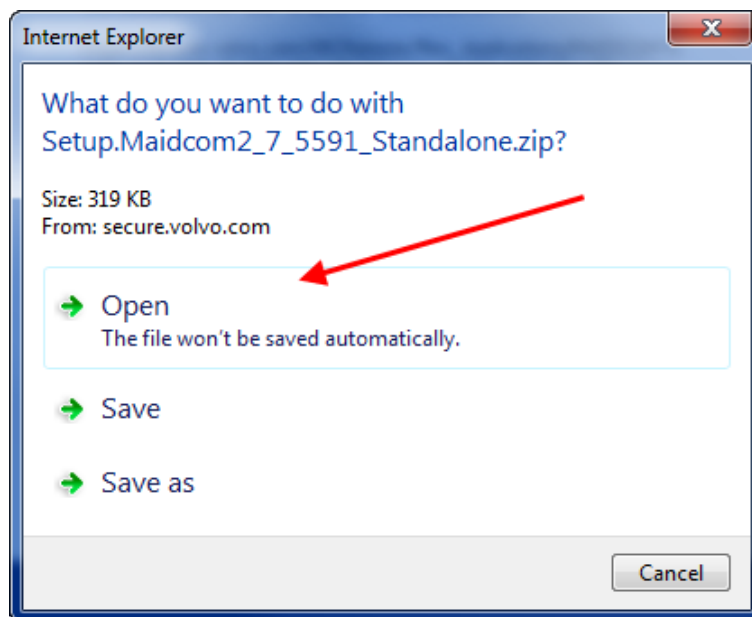
Login

Authentication type:

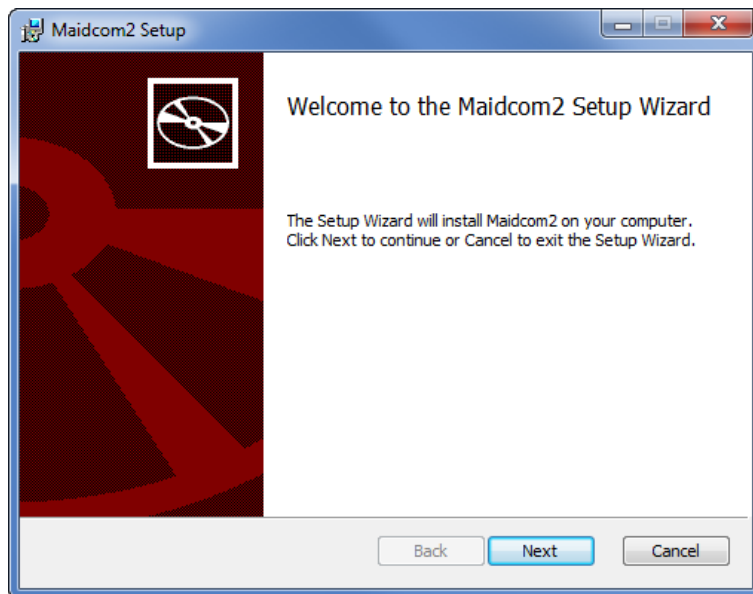
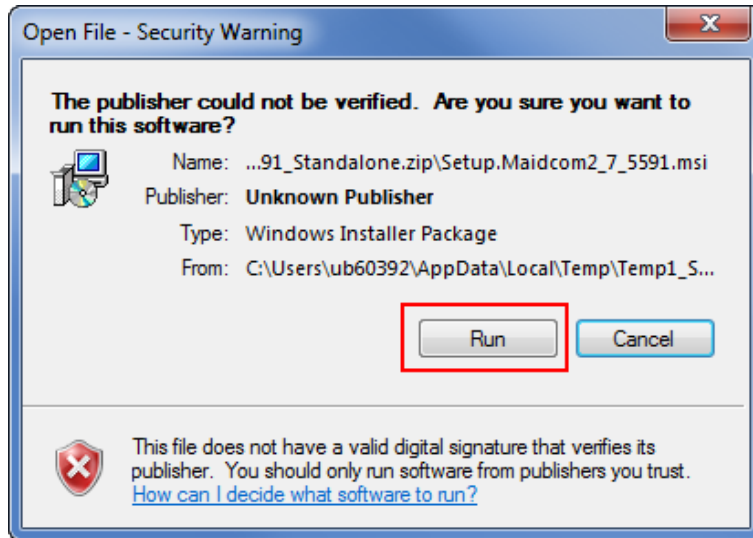
Static Password Login  
 DigiPass Login

[Change password](#)

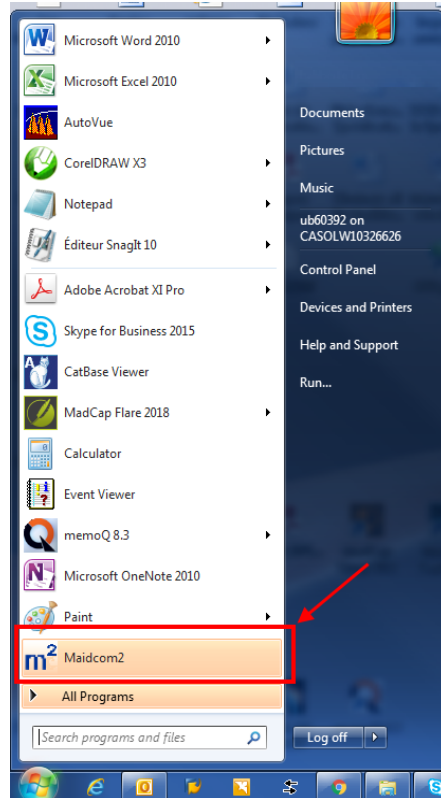
3. This dialog box will show. Select "Open".



4. A window similar to the one below will show. Double-click on the file to run the Setup Wizard and perform the installation steps.

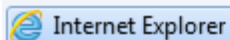


5. Maidcom now installed on your computer.



6. Make a new icon in your taskbar so you can start Maidcom from the taskbar. To do so, in the *Start Menu*, right-click on M2 Maidcom2 and then select *Pin to Taskbar*.

## **NEW INTERNET EXPLORER LINK ON YOUR COMPUTER**



Important note for computers equipped with Windows 10. Make sure that Internet Explorer is installed on your computer and that you use it to create the link and to connect with the MCM module.



**Edge fails to connect with the MCM module. Don't use Edge for this procedure.**

7. You need to create one shortcut (Internet Explorer link) on your desktop as seen on the image below.



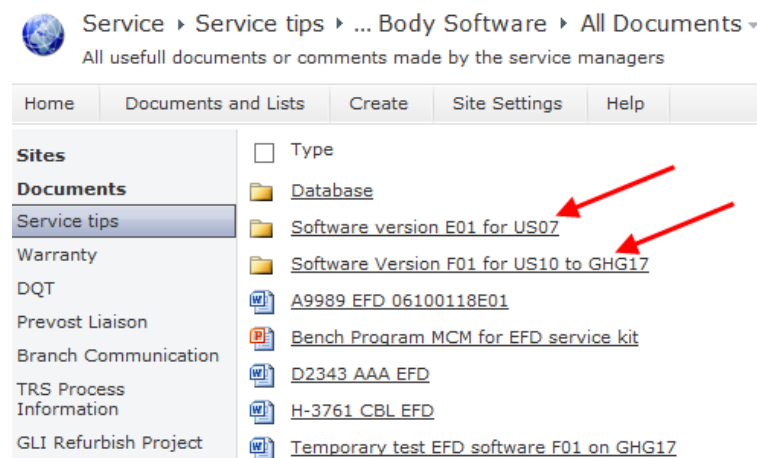
8. Create the link with the following addresses:

Name: *Volvo Bus Local Host*      <http://localhost:49555/>

## **GET BODY SOFTWARE AND SAVE ON YOUR COMPUTER**

9. Get the MCM program for **US10 to GHG17** (*body software FB06100118F01*) on the Service Tips portal using the link below and save it on your computer.

[http://teampace.volvo.com/sites/vbc-scr-dtr-service/Service tips/Electric Fan drive service kit/Body Software](http://teampace.volvo.com/sites/vbc-scr-dtr-service/Service%20tips/Electric%20Fan%20drive%20service%20kit/Body%20Software)



Service > Service tips > ... Body Software > All Documents ▾  
All usefull documents or comments made by the service managers

Home Documents and Lists Create Site Settings Help

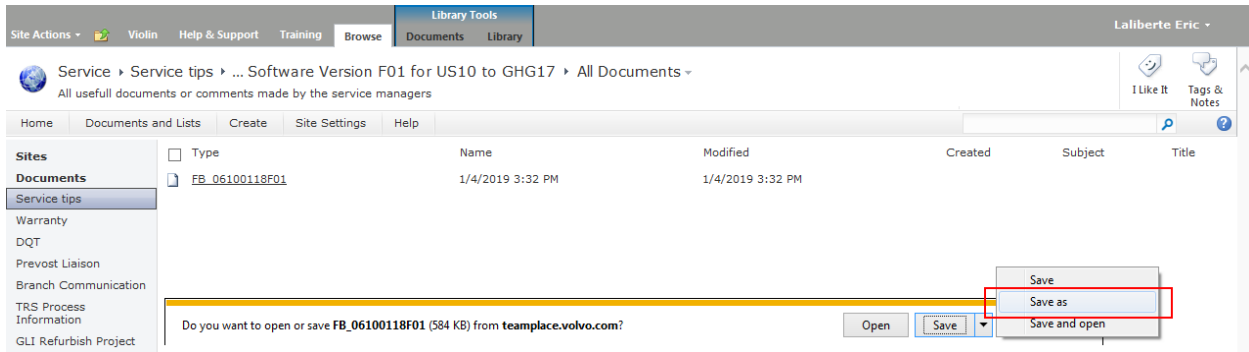
**Sites**

**Documents**

- Service tips
- Warranty
- DQT
- Prevost Liaison
- Branch Communication
- TRS Process Information
- GLI Refurbish Project

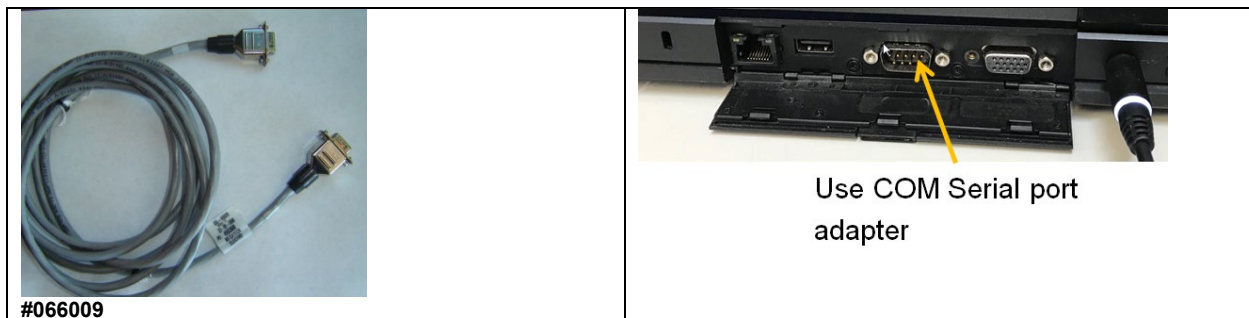
- Type
- Database
- Software version E01 for US07
- Software Version F01 for US10 to GHG17
- A9989 EFD 06100118E01
- Bench Program MCM for EFD service kit
- D2343 AAA EFD
- H-3761 CBL EFD
- Temporary test EFD software F01 on GHG17

10. Click on FB06100118F01 and then save it on your computer at an appropriate location. You can save file to your Desktop, which can give you quick access to it.



## **CONNECTIONS**

11. Connect the interface harness #0610162 to the non-programmed MCM.
12. Connect harness #066009 to the COM serial port of your computer.



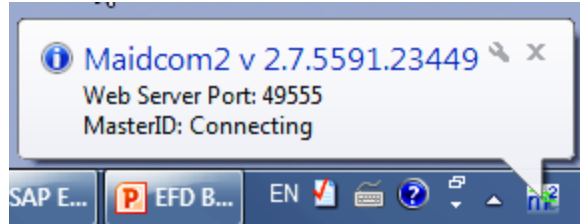
13. Connect the other end of harness #066009 to the DB9 connector on the interface harness #0610162.
14. Connect the 24V power supply #0610163 to the appropriate connector on the interface harness.

## **START MAIDCOM**

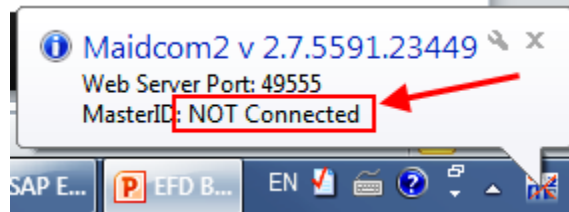
15. Click the Maidcom icon to start it.



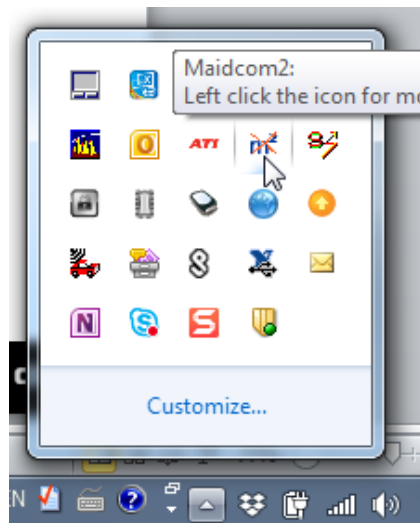
Maidcom will try to connect with the MCM module.

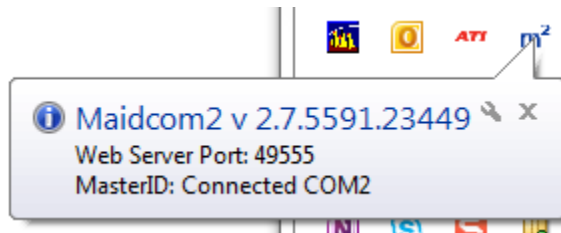
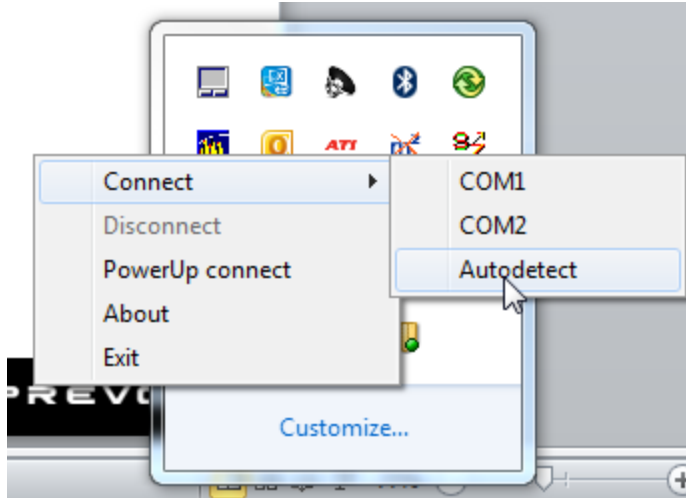


There is a good chance that the first connection trial fails.



If this is the case, in the taskbar, right-click the Maidcom icon and then select *Auto-Detect*.







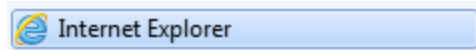
## **CONNECTING WITH THE MCM WEB PAGE**

16. Connect with the MCM web page using the *Volvo Bus Local Host* link previously made.



17.

Make sure to use Internet Explorer



Use the following user name & password:

*User name:*

*Password:*



[Download Software Package](#)

[Start System Software](#)



20. Once connected, select *Download Software Package*.

**VOLVO** Volvo Bus On-board WEB-Server BOOTLOADER

[Download Software Package](#)

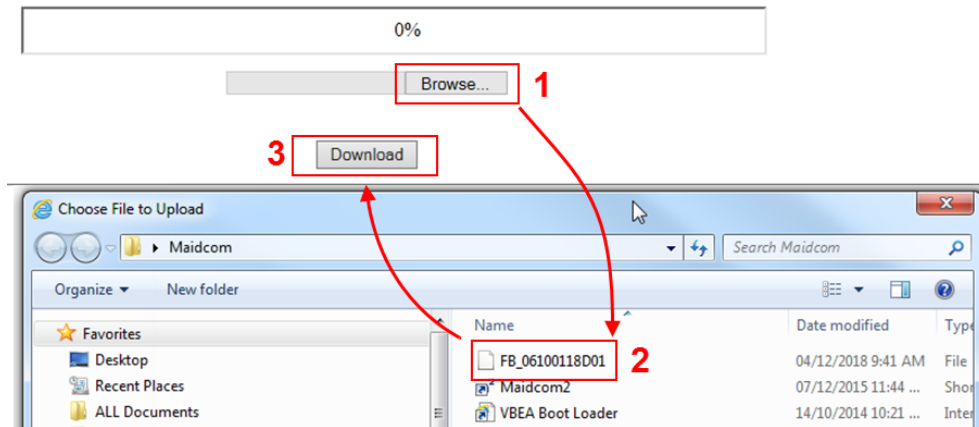
MasterID, MID 210:

Hardware PN	23317344-P01
Hardware SN	07745729
Bootloader PN	23317370-P01
Manufacturer data	

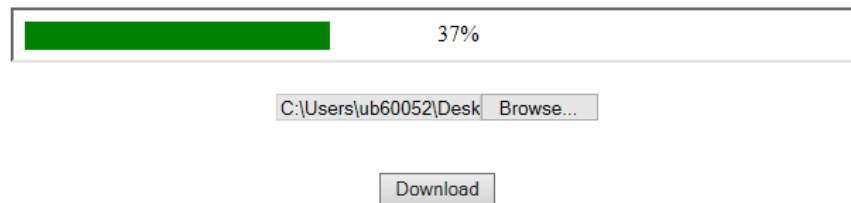
Software:

Vehicle ID	
System software	NOT FOUND

21. Click on *Browse* and search for the Body Software saved on your computer (see 1 on image below).
22. Select the Body Software **FB0610011801** (see 2 on image below).
23. Click on *Download* (see 3 on image below).



Select the software package you want to download.



24. Click on *Start System Software* and then....wait .

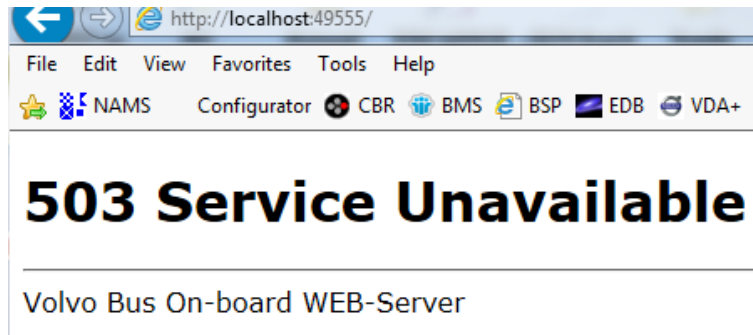
Code 100: Download OK

[Download Software Package](#)

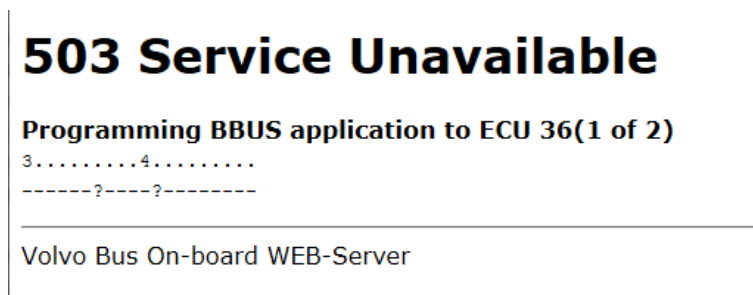
[Start System Software](#)

MasterID, MID 210:	
Hardware PN	23317344-P01
Hardware SN	07745729
Bootloader PN	23317370-P01
Manufacturer data	
Software:	
Vehicle ID	00000000A00
System software	SS-23369980-P01
Common Pages	CP-70369667
CECM-B, MID 188 SSW	BS-23370350-P01-06100118D01
B-Bus Application	BA_00000000A00
B-Bus Parameters	PB_00000000A00

25. The following window is normal, ....*wait*



26. The following window is normal ....*wait* until the window closes.



## CONFIRM THAT THE MCM WAS PROGRAMMED SUCCESSFULLY

27. Confirm that the MCM was programed successfully. Select *Vehicle Information*.

**VOLVO**

Chassis : 06100118F01 PREVOS  
2018-12-21/07:36:04

- + Language ( English )
- + **Vehicle information**
- + Fault log
- + MID view
- + Operation view
- + Function diagram view
- + Parameters
- + Programming
- + Help
- + Exit

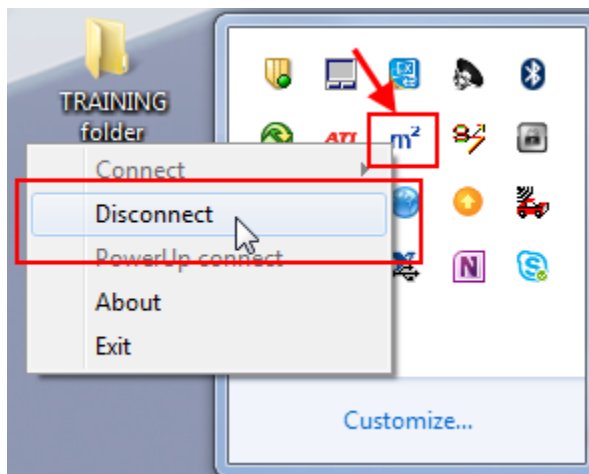
**MasterID, MID 210:**

Hardware PN	23317344-P01
Hardware SN	07823582
Bootloader PN	23317370-P01
Manufacturer data	

**Software:**

Vehicle ID	00000000A00
System software	SS-23369980-P01
Common Pages	CP-70369667
CECM-B, MID 188 SSW	<del>BS-23370350-P01</del> <b>06100118F01</b>
B-Bus Application	BA_00000000A00
B-Bus Parameters	PB_00000000A00

28. Exit Maidcom. To do so, right-click on the icon and then select *Disconnect*.



## DECAL

29. Identify the now programmed MCM. Programed MCM for the Electric Fan Drive conversion kit is part number **23499009-EFD**. Affix decal #7770985 on the programmed MCM. To avoid any confusion, hide the MCM previous part number 23499009 with the decal.

