

October 2, 2019

Version 3

Warranty Extension: 2016-18 Civic 1.5L: DTC P0300, P0301, P0302, P0303, P0304, or P0172; Whirling Noise from EngineSupersedes 19-038, dated June 18, 2019, to revise the information highlighted in **yellow**.**AFFECTED VEHICLES**

Year	Model	Trim	VIN Range
2016-18	Civic	ALL with 1.5L Engine	Check the iN VIN status for eligibility.

REVISION SUMMARY

- **Under REPAIR PROCEDURE B, information was updated.**
- **CAMSHAFT ORDERING PROCESS was added.**
- **Under CAMSHAFT AND ROCKER ARM ASSEMBLIES REPLACEMENT PROCEDURE, information was updated.**

BACKGROUND

Under certain circumstances, the vehicle may experience driveability issues, which may result in DTCs P0300 (random misfire detected), P0301 (No. 1 cylinder misfire detected), P0302 (No. 2 cylinder misfire detected), P0303 (No. 3 cylinder misfire detected), P0304 (No. 4 cylinder misfire detected), or P0172 (fuel system too rich) or a whirling noise coming from the engine compartment.

NOTE

Check the VIN of the vehicle to see if S/B 18-137 applies. If it applies and the repair has not been completed, complete the appropriate repair under S/B 18-137 before continuing.

To ensure customer confidence in our product, Honda is extending the powertrain warranty from the original 5 years/60,000 miles to 6 years with unlimited mileage from the original sale date. This warranty extension applies to any engine components, such as camshafts, rocker arm assemblies, and spark plugs, requiring repair due to damage resulting from those concerns identified in the first paragraph. Vehicles registered and operated in certain states, spark plugs may be covered beyond 6 years under the vehicle's emissions warranty. Check page 2 for details.

This warranty extension will not apply to any vehicle that has ever been declared a total loss or sold for salvage by a financial institution or insurer, or has a branded or similar title under any state's law. This does not affect emission warranties.

POSSIBLE CAUSE

Based on certain driving patterns and environmental factors, the DTC's stated above may be set or a whirling noise may occur.

CUSTOMER INFORMATION: The information in this bulletin is intended for use only by skilled technicians who have the proper tools, equipment, and training to correctly and safely maintain your vehicle. These procedures should not be attempted by "do-it-yourselfers," and you should not assume this bulletin applies to your vehicle, or that your vehicle has the condition described. To determine whether this information applies, contact an authorized Honda automobile dealer.

CORRECTIVE ACTION

If S/B 18-137 applies to this vehicle, complete the repairs under that bulletin first. If, after completing S/B 18-137, misfire (P0300, P0301, P0302, P0303, P0304) or fuel system too rich (P0172) DTCs are set, do REPAIR PROCEDURE A. If there is a whirling noise coming from the engine compartment, do REPAIR PROCEDURE B.

WARRANTY CLAIM INFORMATION

NOTE

- DTC is required with claim submission.

NOTES

- Check emission table on iN to verify the applicable emissions coverage for each vehicle.

Powertrain and Emissions Warranty Coverage Inquiry

Identification VAT0017			
Inquiry Information			
VIN	Customer State NY - New York		
Description CIVIC HATCH EX	Year 2018	Model FK7H5JJW	Emission Type KL

Item	Part Number	Description	Powertrain Warranty (Months/Miles)	Emission Warranty (Months/Miles)
1	12290-5PA-A01	S/PLG (ILZKAR8J8SY)	NOT A POWERTRAIN PART	180/ 150,000

- Use the appropriate operation number for the applicable warranty coverage (emissions warranty or extended powertrain warranty)

Use the information below if the warranty information is covered by the emission warranty of 15 years or 150,000 miles.

Operation Number	Description	Flat Rate Time	Defect Code	Symptom Code	Template ID	Failed Part Number
1175A4	Spark plugs (All except Si). (Inspect and replace) (Admin Included)	0.3 hr	03214	03217	A19038K	12290-5PA-A01

NOTE

Use the following template if the **spark plugs** were replaced.

Operation Number	Description	Flat Rate Time	Defect Code	Symptom Code	Template ID	Failed Part Number
1175A3	Spark plugs (All except Si). (Inspection only) (Admin Included)	0.3 hr	6D800	E4C00	A19038A	12290-5PA-A01

Operation Number	Description	Flat Rate Time	Defect Code	Symptom Code	Template ID	Failed Part Number
1175A3	Spark plugs (Si only). (Inspection only) (Admin Included)	0.3 hr	6D800	E4C00	A19038B	12290-5PA-A01

Operation Number	Description	Flat Rate Time	Defect Code	Symptom Code	Template ID	Failed Part Number
1175A3	Spark plugs (All except Si). (Inspect and replace) (Admin Included)	0.3 hr	6D800	E4C00	A19038C	12290-5PA-A01

Operation Number	Description	Flat Rate Time	Defect Code	Symptom Code	Template ID	Failed Part Number
1175A3	Spark plugs (Si only). (Inspect and replace) (Admin Included)	0.3 hr	6D800	E4C00	A19038D	12290-5PA-A01

NOTE

Use the following template if the **camshafts** were only inspected.

Operation Number	Description	Flat Rate Time	Defect Code	Symptom Code	Template ID	Failed Part Number
1105C1	Remove valve cover and inspect camshafts. (No replacement required.)	0.7 hr	6D800	E4C00	A19038E	37805-5PA-A85

NOTE

Use the following template if the **camshafts** and **rocker arm assembly** were replaced.

Civic (2-Door, 4-Door) (All Except Si)

Operation Number	Description	Flat Rate Time	Defect Code	Symptom Code	Template ID	Failed Part Number
1105C1	Remove valve cover and inspect camshafts.	0.7 hr	6D800	E4C00	A19038F	37805-5PA-A85
A	Replace camshafts and rocker arm assembly. (Pre-approval needed, see iN parts catalog for ordering.)	4.9 hr				

Civic Si (2-Door, 4-Door)

Operation Number	Description	Flat Rate Time	Defect Code	Symptom Code	Template ID	Failed Part Number
1105C1	Remove valve cover and inspect camshafts.	0.7 hr	6D800	E4C00	A19038H	37805-5PA-A85
A	Replace camshafts and rocker arm assembly. (Pre-approval needed, see iN parts catalog for ordering.)	4.9 hr				

Civic Hatchback (5-Door)

Operation Number	Description	Flat Rate Time	Defect Code	Symptom Code	Template ID	Failed Part Number
1105C1	Remove valve cover and inspect camshafts.	0.7 hr	6D800	E4C00	A19038J	37805-5PA-A85
A	Replace camshafts and rocker arm assembly. (Pre-approval needed, see iN parts catalog for ordering.)	4.9 hr				

Skill Level: Repair Technician

PARTS INFORMATION

Part Name	Part Number	Quantity
Spark Plug (All except Si)	12290-59B-003	4
Spark Plug (Si only)	12290-5PA-A01	4

REPAIR PROCEDURE A

1. In some cases, the misfire DTCs may return. If this happens, inspect the spark plugs.



- If the spark plugs are OK, the procedure is complete. Continue with normal system troubleshooting.
 - If the spark plugs are fouled, go to step 2.
2. Replace the spark plugs according to the service information, and check for stored DTCs.

NOTE

Make sure to write down the stored DTCs on the R.O.

- If the applicable DTCs do not return, the procedure is complete.
- If the applicable DTCs return, this bulletin does not apply. Continue with normal system troubleshooting.

REPAIR PROCEDURE B

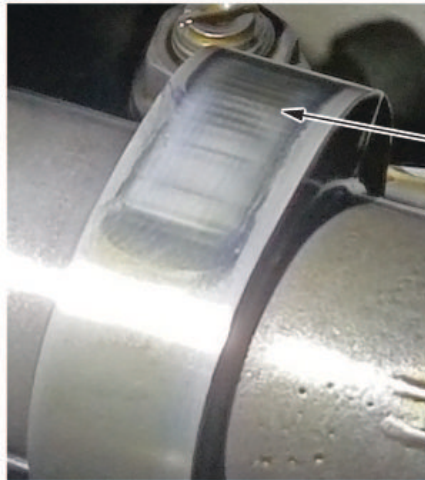
If there is a whirling noise coming from the engine, follow the procedure below.

1. Warm up the engine by increasing the engine speed to **3,000 rpm** for two fan cycles.
2. After the warmup procedure is completed, let the engine return to idle for **10 seconds**.
3. After **10 seconds**, slowly increase the engine speed to **3,500 rpm** (this should take at least **20 seconds**).
4. Once the engine speed reaches **3,500 rpm**, release the accelerator pedal and let the engine speed return to idle.
5. With the hood closed and inside the cabin, compare the audio file [here](#) to the noise heard.
 - If the noise is similar, go to step 6.
 - If the noise is not similar, this bulletin does not apply. Continue with normal system troubleshooting.
6. Remove the cylinder head cover. See the service information for additional instructions.
7. Compare the appearance of the camshaft lobes to the photo below.

 GOOD



 NO GOOD



The cam surface has ridges and a "cloudy" appearance.

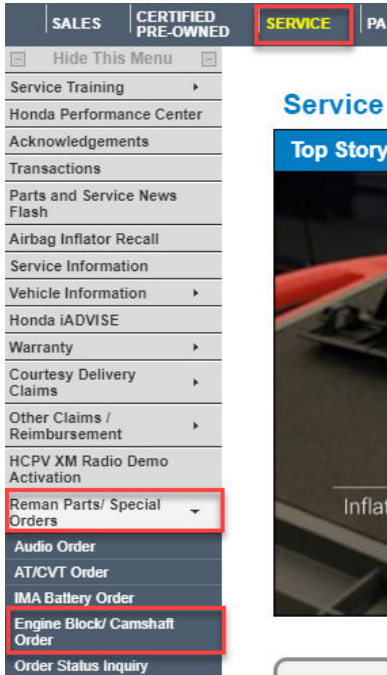
- If the camshafts appear similar to the no good photo, go to step 8.
 - If the camshafts appear similar to the good photo, this bulletin does not apply. Continue with normal system troubleshooting.
8. **Take four to five photos of the cam lobe, then follow the directions under CAMSHAFT ORDERING PROCESS on how to order them.**
 9. **Once you get approval through the iN to replace the camshafts, go to page 10 and follow the instructions.**

CAMSHAFT ORDERING PROCESS

NOTE

Use the Interactive Network (iN) to order camshafts for campaigns, customer pay, or goodwill. Do not call TechLine.

1. Log on to (iN), and select **Service > Reman Parts/ Special Orders > Engine Block/ Camshaft Order**.



2. Enter the VIN and mileage. Then, select **Submit** to go to the **Camshaft Order** form.

The screenshot shows the 'Camshaft Order' form. The 'Vehicle Information' section is highlighted. The 'Order Type' is set to 'Camshaft'. The 'VIN' and 'Mileage' fields are highlighted in red. The 'MODEL' and 'YEAR' fields are also present. A 'Submit' button is at the bottom.

Camshaft Order

* = Required

Vehicle Information

Order Type: Engine Block Camshaft

VIN: Mileage:

MODEL: YEAR:

Please Note: Only Camshaft / Parts Orders for the models listed below can be placed from this page.

CIVIC - 2016-2019

CRV - 2017-2019

Submit

3. Fill out the Camshaft Order form.

Camshaft Order

[Hours of Operation](#)

* = Required

Dealer Information			
Dealer Number	<input type="text"/>	Repair Order Number*	<input type="text"/>
DPTS ID/Name*	<input type="text"/>	Repair Order Date*	<input type="text"/> / <input type="text"/> / <input type="text"/>
SSN*	<input type="text"/> (Last four numbers)	Approved by Parts Manager*	<input type="radio"/> Yes <input type="radio"/> No
Telephone No.*	<input type="text"/> - <input type="text"/> - <input type="text"/> Ext. <input type="text"/>	Have you called Tech Line about this problem?*	<input type="radio"/> Yes <input type="radio"/> No
Vehicle Information			
VIN	7FARW2H01JE064583	Mileage	234
Model	CR-V 1.5T	Model Year	2018
Body Type	SDR	Trim Level	AWDEXL
Warranty/Goodwill Information			
Warranty Status	IN WARRANTY	Warranty Type	WAR <input type="checkbox"/> Customer Pay
First Use Date	06/27/2018	Goodwill VSC Authorization	<input type="text"/>
<small>Disclaimer: Warranty Validation checks manufacturer warranty coverage only. Please obtain authorization prior to submitting Goodwill or VSC/HCPV ENGINE BLOCK orders.</small>			
Customer Information			
Customer Name*	<input type="text"/>	Customer Contact No.*	<input type="text"/>
Customer's Complaint*	<input type="text"/> (MAX ALLOWED CHARACTERS 500)		
Parts Information Bulletin			
For additional information, please refer to Parts Information Bulletin: xxxxxxxxxxxx Camshaft Ordering.			
Problem Description			
Is there a whirling noise coming from the engine compartment? *	<input type="radio"/> Yes <input type="radio"/> No		
Does the camshaft resemble the photo of a NO GOOD camshaft in the bulletin? *	<input type="radio"/> Yes <input type="radio"/> No		
DTC	<input type="text"/>	<input type="text"/>	<input type="text"/>

NOTES

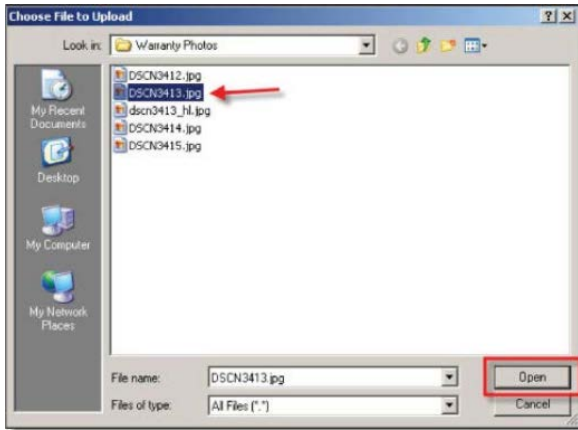
- Questions with a red asterisk (*) are required fields that must be answered to submit the form. Make sure the information is accurate and complete as this information is critical to the ordering process.
 - Once you submit this form, it can be tracked using the **Order Status Inquiry** screen on the iN.
4. Under **Image Upload**, select **Image Upload**.



NOTE

Customer pay will not require photos.

5. Select **Choose File**, and select the photos you want to upload.



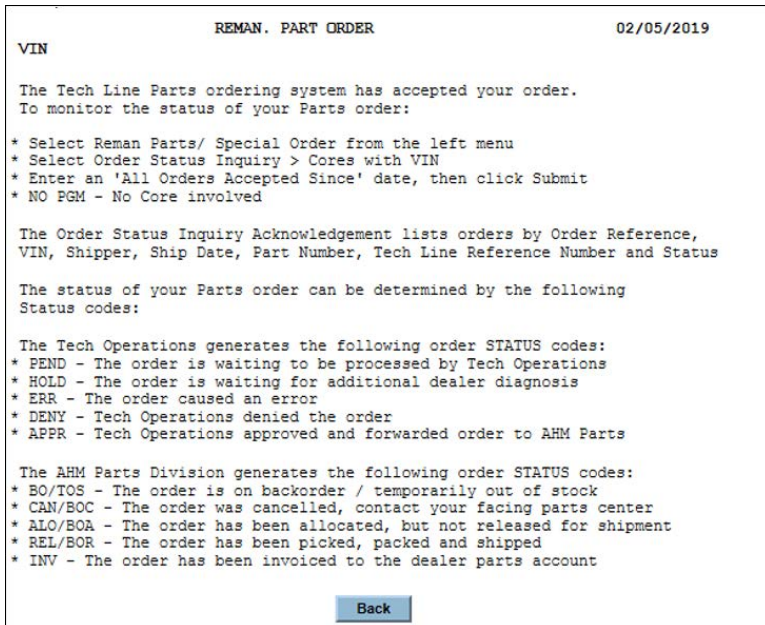
NOTE

Upload a minimum of four to five photos.

6. Select **Preview** to view the image before uploading them.
7. Select **Upload** once you have your photos selected.
8. When complete, select **Submit**.

NOTE

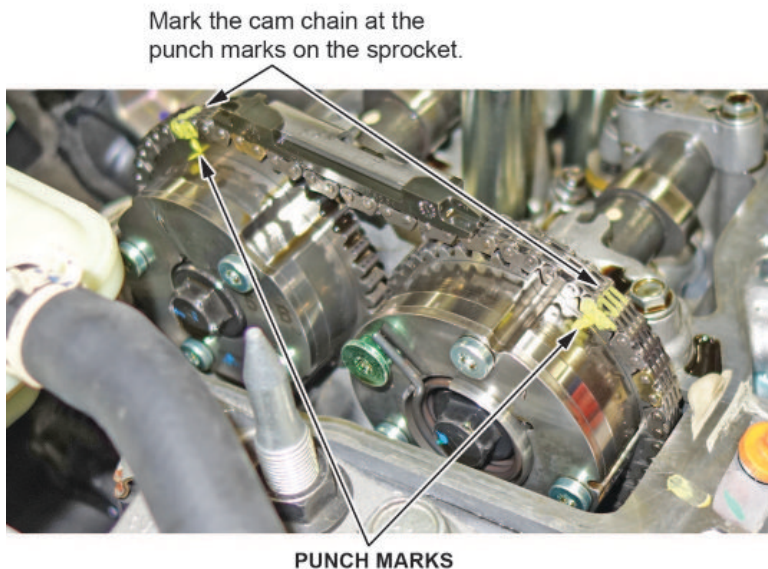
You will receive a confirmation notification once the order for the camshafts has been authorized.



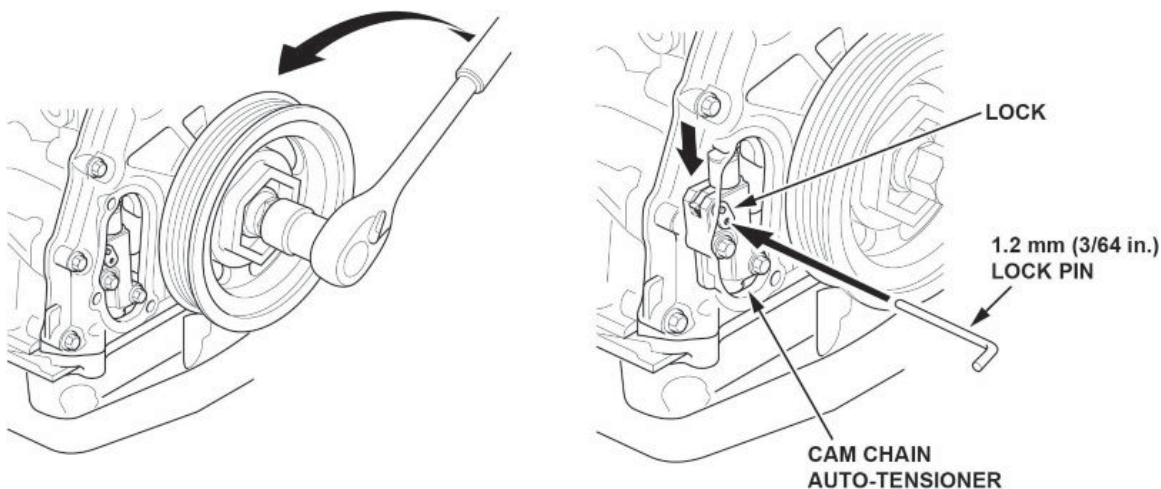
CAMSHAFT AND ROCKER ARM ASSEMBLIES REPLACEMENT PROCEDURE

The following instructions are for replacement of the intake and exhaust camshafts and all rocker arm assemblies. **This is only if you have received approval for replacement parts via iN.**

1. Relieve the fuel pressure, and remove the high pressure fuel pump. Refer to the service information for additional instructions.
2. Set the crankshaft to top dead center (TDC) for No. 1 cylinder. Refer to step 4 of the Camshaft Timing Inspection procedure in the service information.
3. Mark the timing chain at the punch marks on the exhaust and intake camshaft sprocket and VTC actuator as shown below.

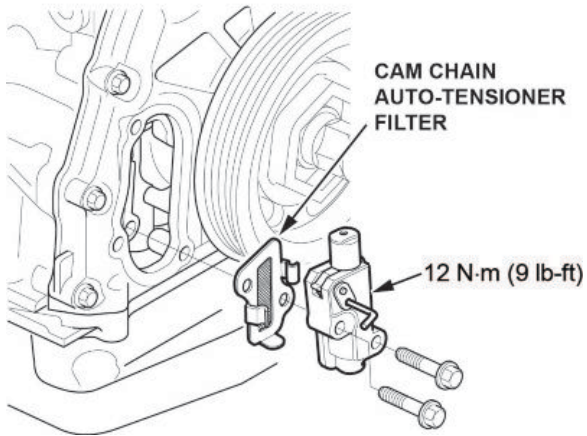


4. Raise the vehicle on a lift.
5. Remove the right front wheel and the engine undercover.
6. Remove the cam chain auto-tensioner (chain case) cover.
7. Slightly rotate the crankshaft counterclockwise to compress the auto-tensioner. Line up the hole in the lock and auto-tensioner, then insert a 1.2 mm-diameter lock pin.



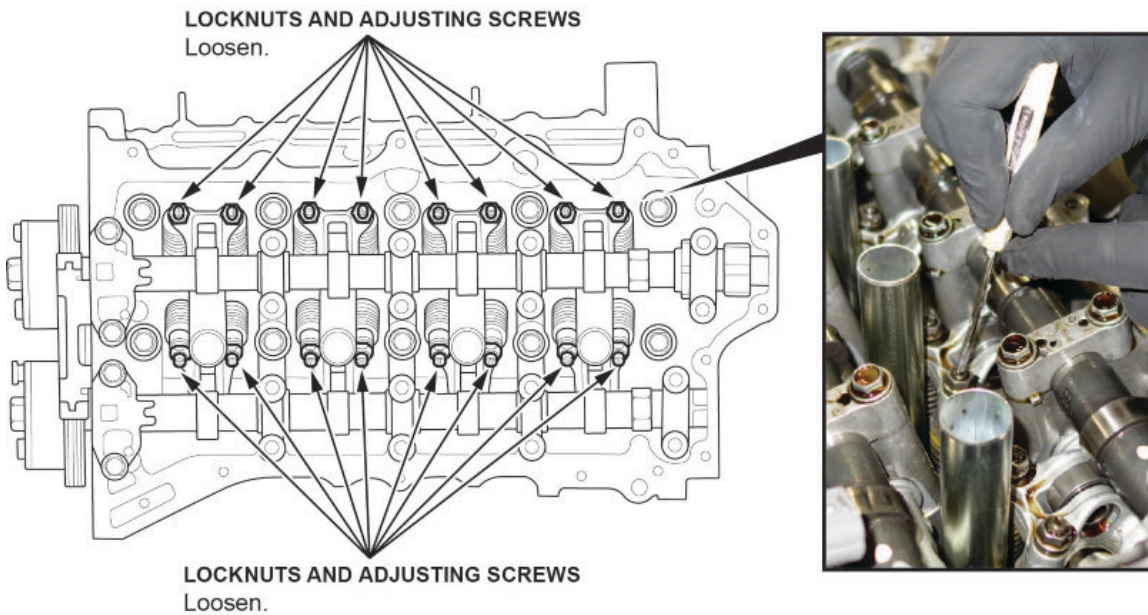
8. Rotate the crankshaft clockwise back to TDC on the No. 1 cylinder to secure the lock pin in place.

9. Remove the camshaft chain auto-tensioner with the lock pin inserted.

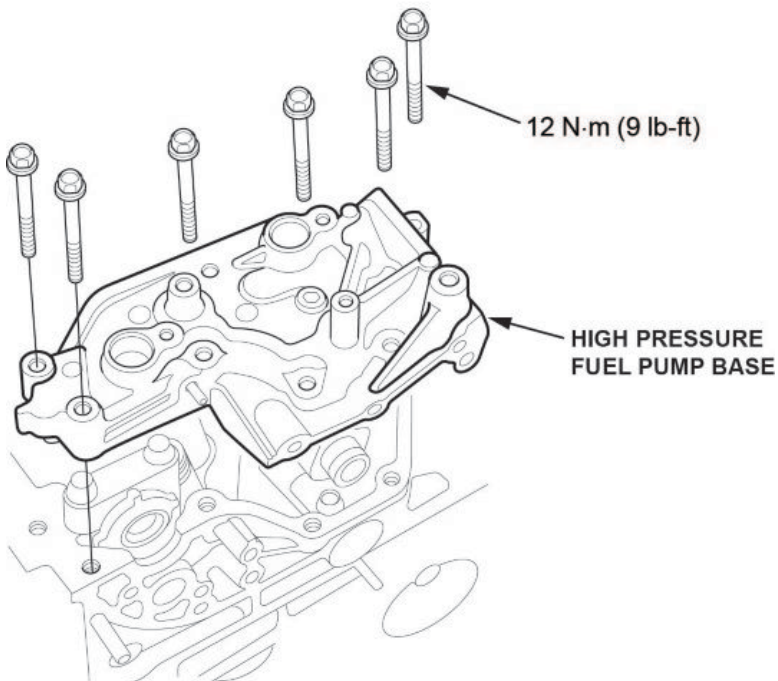


10. Lower the vehicle.

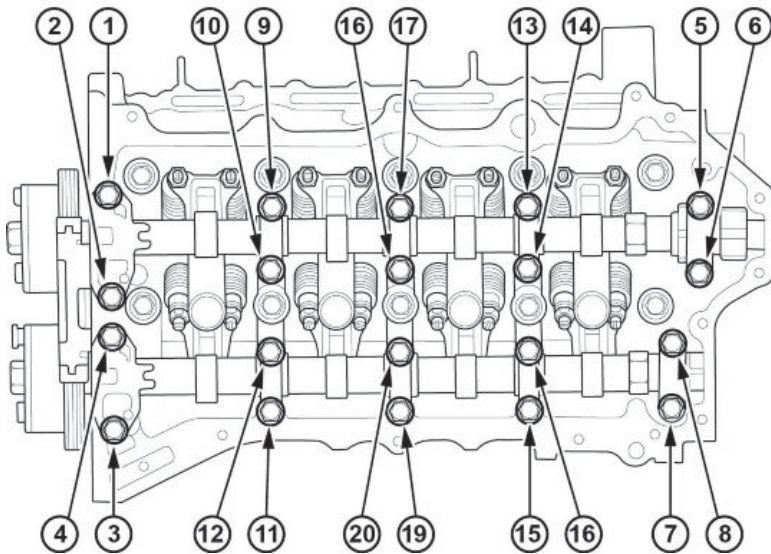
11. Loosen the locknuts and adjusting screws.



12. Remove the high pressure fuel pump base.

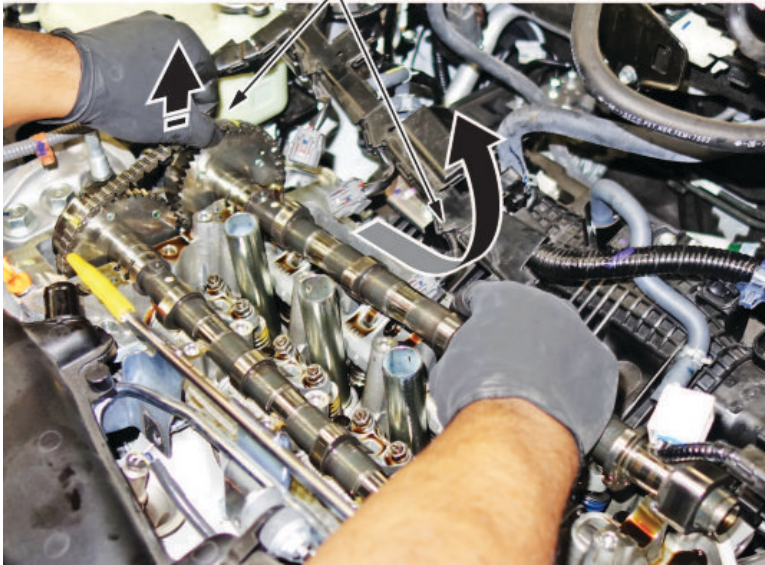


13. Remove the camshaft holder bolts, then remove the camshaft holders. To prevent damaging the camshafts, loosen the bolts as shown, two turns at a time.



14. Lift up the cam chain, then carefully remove the intake camshaft followed by the exhaust camshaft. You must maintain tension on the cam chain while you do this.

Lift up the cam chain and carefully slip the camshaft out.



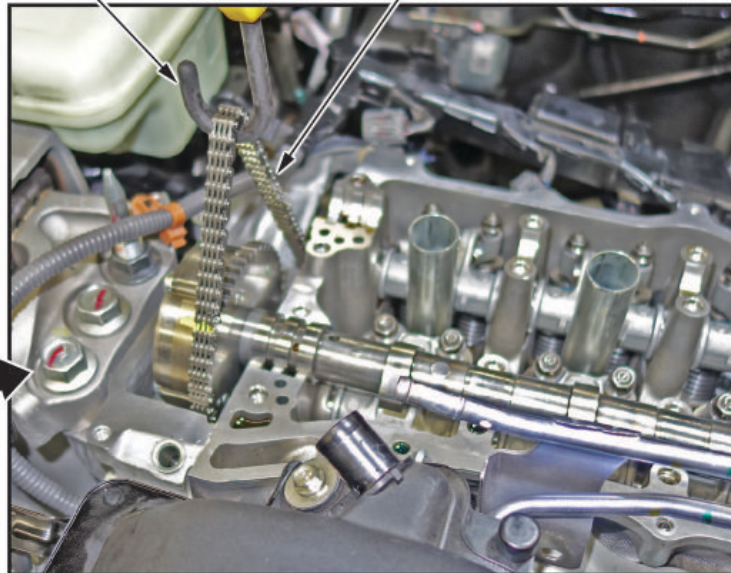
15. Use a bungee cord to hold tension on the cam chain while you are replacing the camshafts.

BUNGEE CORD



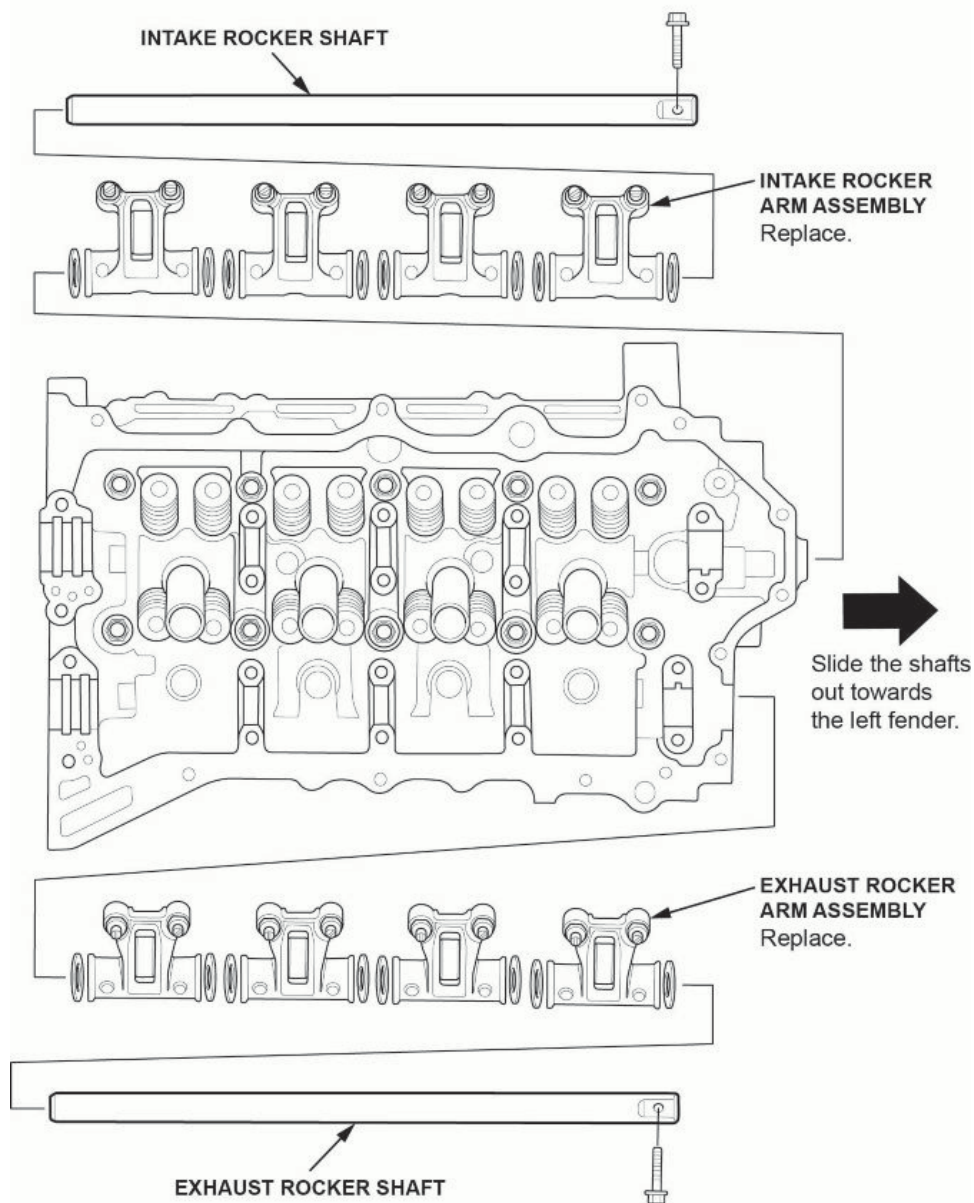
BUNGEE HOOK

CAM CHAIN



16. When removing the camshaft holders, cam chain guide, and intake and exhaust camshaft, make sure to place them in order of installation on a clean, padded workbench.

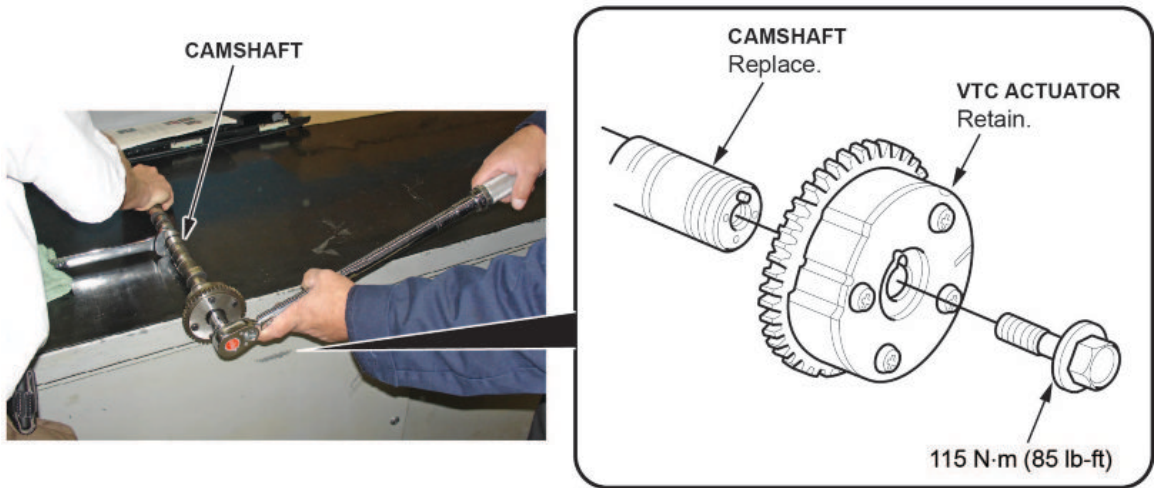
17. Remove the rocker arm assembly, and install the new set. Refer to the service information for additional instructions.



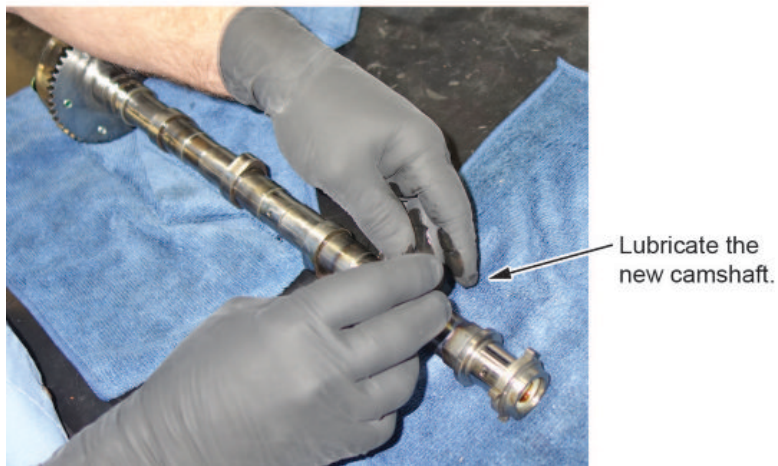
18. With the camshafts out of the engine, hold them with an open-end wrench and loosen the VTC actuator mounting bolts on both camshafts.
19. Install the VTC actuators on the new camshafts.

NOTE

You may need an assistant to help you with this procedure.



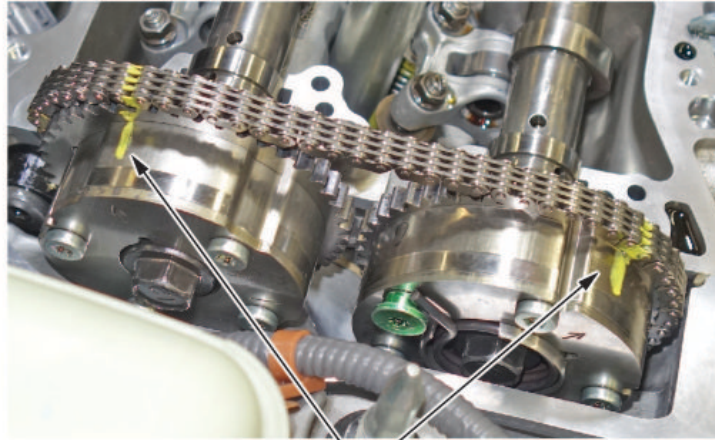
20. Apply fresh engine oil to the new camshafts, and install.



21. When installing the new camshafts, make sure the previously made marks on the VTC actuator and cam chain line up.

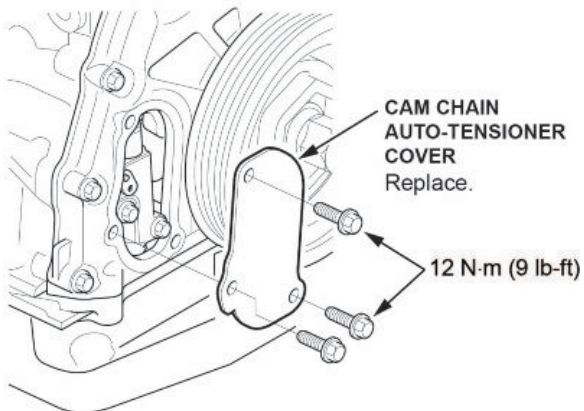


As the camshaft is installed, line up the marks made in step 3.



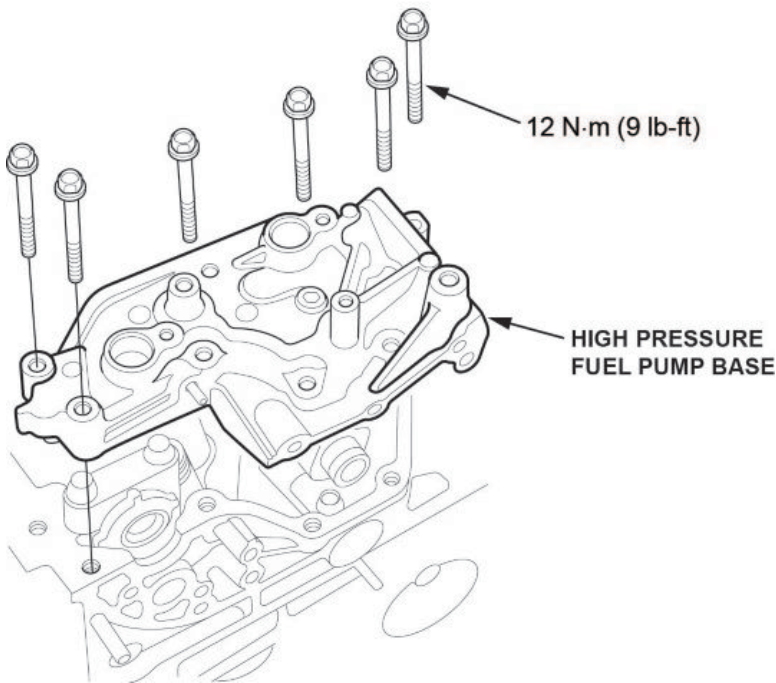
MARKS

22. Install the camshaft holders and the cam chain guide, then torque them to specification.
23. Install the camshaft chain tensioner, and release the lock pin.
24. Install the new cam chain auto-tensioner (chain case) cover.



25. To check the camshaft timing, rotate the crankshaft in the direction of engine rotation (clockwise) two full turns, then stop at the TDC mark. Refer to step 4 of the Camshaft Timing Inspection procedure in the service information.
26. Do a valve adjustment.

27. Install the high pressure fuel pump base and new camshaft holder cover. Refer to step 6 of the installation section of the Camshaft and VTC Actuator Removal, Installation, and Inspection (1.5L Engine) procedure in the service information.



28. Install the cylinder head cover. Refer to the service information for additional instructions.
29. Install the high pressure fuel pump with the new O-ring and fuel joint pipe. Refer to the service information for additional information.
30. Install the engine undercover and any other remaining parts.
31. During the first startup, check for set DTCs or abnormal noises. Refer to the service information for additional instructions.
32. Reset the throttle position learned values by referencing the Throttle Body Removal and Installation procedure in the service information, then do the PCM idle learn procedure. Refer to the service information for additional instructions.

NOTE

For more information on the PCM idle learn procedure, see the *Tech2Tech*[®] video, "A Look at PCM Idle Learn."

END