

## Side windows may make noises when closing and opening, or reverse direction when closing.

Topic number	LI67.30-P-052837
Version	4
Design group	67.30 Side windows
Date	07-08-2014
Validity	MODEL 166.0 Up to VIN end no.: L 003467 Up to VIN end no.: M 003467 Up to VIN end no.: A 361392
Reason for change	Part number changed. Repair procedure changed.
Reason for block	

### Complaint:

Side windows may make noises when closing and opening, or reverse direction when closing.

### Cause:

1. Interior window channel seal: Faulty anti-friction coating can lead to increased friction and folding down of the sealing lips.

Consequence: Friction is too high and results in noise and reversing windows.

2. Window guide rails (see picture 1): Side window (2) can slip behind base lip (3) whereupon the base lip (3) folds over (red arrow).

Consequence: Window runs on bare rubber and the friction is too high, which causes noise and reversing windows.

3. On the front doors the lip may be folded over on the window guide rail below the beltline in the area of the B-pillar (see picture 4 and picture 5).

Consequence: Friction is too high and leads to noises.

Attachments	
File	Description
Bild1.jpg	Cross section of window guide rail
Bild 4.JPG	Area of window guide rail below beltline
Bild 5.JPG	Window guide rail lip folded over below beltline

### Remedy:

1. Visually inspect upper (picture 3, item 2) and lower sealing lips (picture 3, item 1) of interior window channel seals:  
- If the sealing lip has folded down replace the affected interior window channel seal.

2. Visual inspection of window guide rails at front and rear as to whether the base lip has folded down (see picture 2):  
- Open window and close slightly again.

- Use a plastic wedge to force the window guide rail above the window until the base lip (1) is visible.

- If the base lip is folded down replace the affected window guide rail.

Important: When installing the side window, make sure that the base lip (3) is not positioned at the side of the window.

3. Visual inspection to check whether the lip is folded over on the window guide rail.

- To do this, remove beltline trim strip.

- If the lip is folded over, the window guide rail must be replaced.

Important: For this complaint it is not permitted to replace the door module including the power window or power window motor.

Attachments	
File	Description
Bild2.jpg	Check base lip of window guide rail
Bild3.jpg	Interior window channel seal

Symptoms
Body / Glazing / Window lifting mechanism/window operation / Remains stationary
Body / Glazing / Window lifting mechanism/window operation / Does not run up
Body / Glazing / Window lifting mechanism/window operation / Stiff/sluggish
Body / Glazing / Window lifting mechanism/window operation / Opens by itself
Body / Glazing / Window lifting mechanism/window operation / Noise

Parts							
Part number	ES1	ES2	Designation	Quantity	Note	EPC	Other make part
A 166 735 09 25			Guide rail for left rear door	1		X	
A 166 735 10 25			Guide rail for right rear door	1		X	
A 166 725 03 65			Inner sealing rail for left front door	1		X	
A 166 725 04 65			Inner sealing rail for right front door	1		X	
A 166 735 01 65			Inner sealing rail for left rear door	1		X	
A 166 735 02 65			Sealing rail for inner right rear door	1		X	
A 166 725 17 00			Guide rail for left front door	1		X	
A 166 725 18 00			Guide rail for right front door	1		X	

WIS-References			
Document number	Title	Note	Allocation
AR72.12-P-1013GZ	Remove/install inner sealing rail for rear door		Remedy
AR72.10-P-1600GZ	Remove/install inner sealing rail		Remedy
AR72.12-P-1500GQ	Remove/install window guide rail for rear door		Remedy
AR72.10-P-1500GQ	Remove/install window guide rail		Remedy

## Validity

Vehicle	Engine	Transmission
166.003	*	*
166.004	*	*
166.023	*	*
166.024	*	*
166.055	*	*
166.057	*	*
166.058	*	*
166.073	*	*
166.074	*	*

## Attachments

Bild1.jpg:

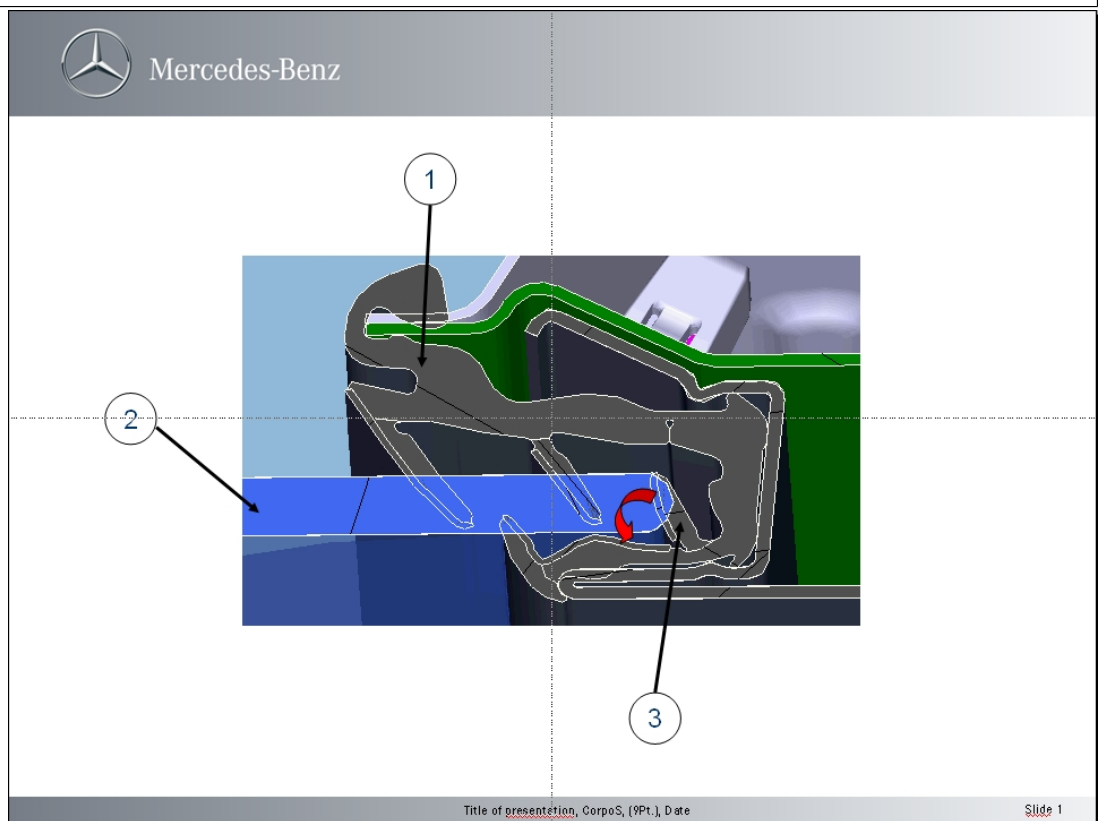


Bild2.jpg:

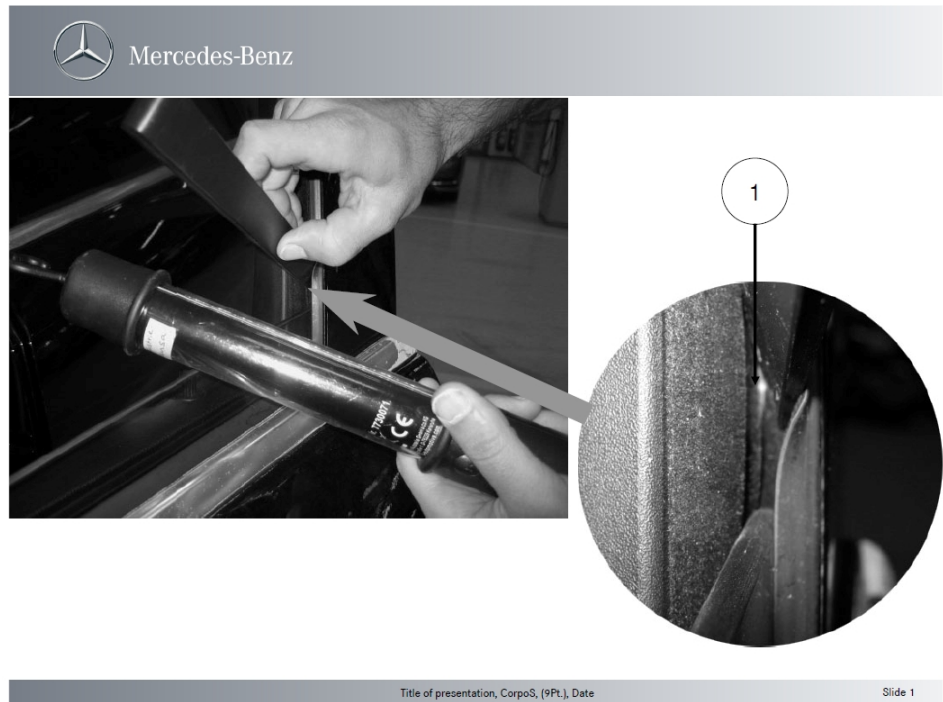


Bild3.jpg:

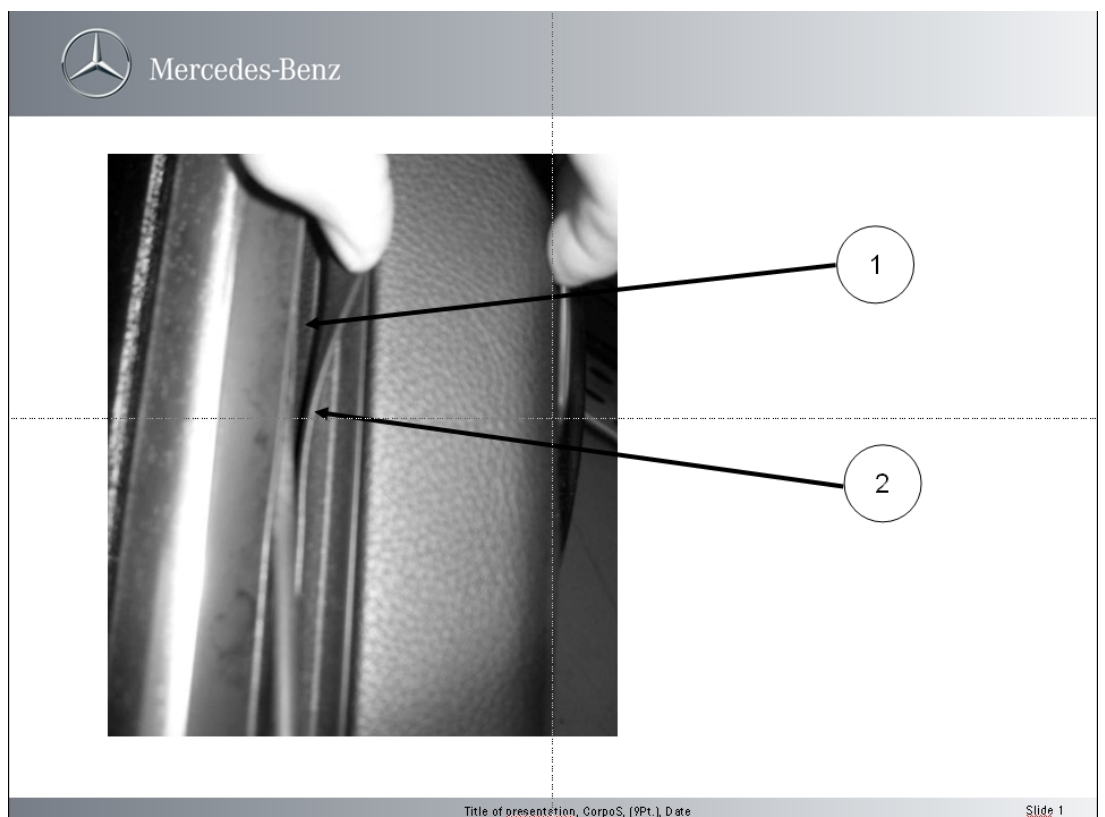


Bild 4.JPG:

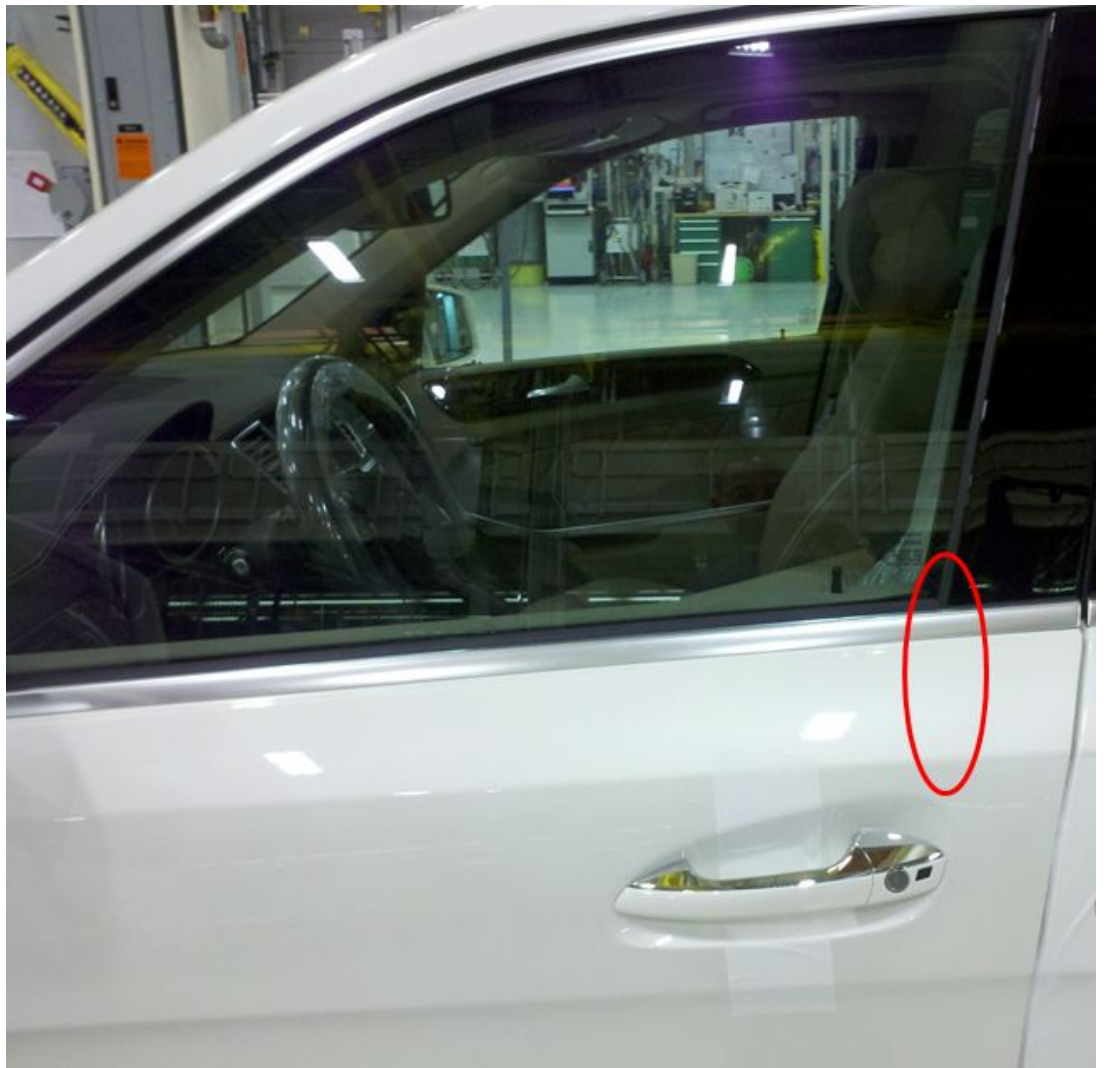


Bild 5.JPG:

